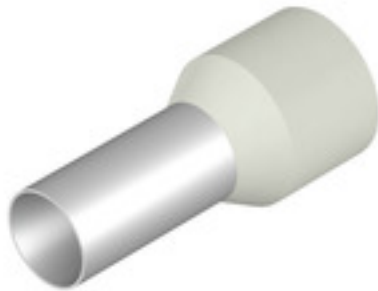


**Connecting elements**  
**H16,0/22T W**

**Weidmüller Interface GmbH & Co. KG**  
Klingenbergstraße 26  
D-32758 Detmold  
Germany  
Fon: +49 5231 14-0  
Fax: +49 5231 14-292083  
www.weidmueller.com



- supplied loose in poly-bag
- Weidmüller colour code
- DIN colour code
- other colour code

**General ordering data**

Type	H16,0/22T W
Order No.	<a href="#">9021170000</a>
Version	Wire-end ferrule, insulated, 15 mm, 12 mm, white
GTIN (EAN)	4008190151478
Qty.	100 pc(s).
Packaging	loose

Creation date May 1, 2020 3:09:54 AM CEST

**Data sheet**

**Connecting elements  
H16,0/22T W**

**Weidmüller Interface GmbH & Co. KG**  
 Klingenbergstraße 26  
 D-32758 Detmold  
 Germany  
 Fon: +49 5231 14-0  
 Fax: +49 5231 14-292083  
 www.weidmueller.com

**Technical data**

**Dimensions and weights**

Width	22 mm	Width (inches)	0.866 inch
Net weight	0.71 g		

**Technical data**

Version	insulated
---------	-----------

**Wire-end ferrules**

Collar diameter (D2)	8.8 mm	Colour code	Telemecanique
Conductor cross-section	16 mm <sup>2</sup>	Contact surface diameter (D1)	5.8 mm
Contact surface length (L2)	12 mm	L1 in mm	22 mm
Metal sleeve thickness (S1)	0.2 mm	Military designation	T 20A 025 A
Plastic collar thickness (S2)	0.4 mm	Stripping length	15 mm
Wire connection cross section AWG, max.	AWG 6		

**Classifications**

ETIM 6.0	EC000005	ETIM 7.0	EC000005
eClass 9.0	27-40-02-01	eClass 9.1	27-40-02-01
eClass 10.0	27-40-02-01	UNSPSC	31-16-31-02

**Approvals**

Approvals



ROHS	Conform
------	---------

**Downloads**

Brochure/Catalogue	<a href="#">CAT 6 TOOLS 15/16 EN</a>
Engineering Data	<a href="#">EPLAN, WSCAD, Zuken E3.S</a>
Engineering Data	<a href="#">STEP</a>
User Documentation	<a href="#">Technical information - EN</a> <a href="#">Technical information - DE</a>

**Data sheet**

**Connecting elements**  
**H16,0/22T W**

**Weidmüller Interface GmbH & Co. KG**  
Klingenbergstraße 26  
D-32758 Detmold  
Germany  
Fon: +49 5231 14-0  
Fax: +49 5231 14-292083  
www.weidmueller.com

**Drawings**

**Drawing**

