

ACT20X ACT20X-2HTI-2SAO-S

Weidmüller Interface GmbH & Co. KG
Klingenbergstraße 26
D-32758 Detmold
Germany
Fon: +49 5231 14-0
Fax: +49 5231 14-292083
www.weidmueller.com

Product image



The ACT20X-HTI-SAO / 2HTI-2SAO temperature transducers record temperatures from PT100 sensors and thermocouples from Ex zone 0. Current loops from 0(4) to 20 mA can also be connected on the input side. On the output side, there are active and passive current loops available for the safe zone. Integrated alarm contacts issue an alert in the event of a malfunction; this makes troubleshooting easier and increases system availability. The rail-mounted current output isolators are optionally available in one- or two-channel versions. With 11 mm width per channel, the devices need little space in the electrical cabinet.

General ordering data

Type	ACT20X-2HTI-2SAO-S
Order No.	8965480000
Version	EX signal isolating converter, Ex-input: I, 9, Safe-output: 4-20mA, 2-channel
GTIN (EAN)	4032248785094
Qty.	1 pc(s).

Data sheet

ACT20X ACT20X-2HTI-2SAO-S

Weidmüller Interface GmbH & Co. KG
Klingenbergstraße 26
D-32758 Detmold
Germany
Fon: +49 5231 14-0
Fax: +49 5231 14-292083
www.weidmueller.com

Technical data

Dimensions and weights

Width	22.5 mm	Width (inches)	0.886 inch
Height	119.2 mm	Height (inches)	4.693 inch
Depth	113.6 mm	Depth (inches)	4.472 inch
Net weight	180 g		

Temperatures

Humidity	0...95 % (no condensation)	Operating temperature, max.	60 °C
Operating temperature, min.	-20 °C	Storage temperature, max.	85 °C
Storage temperature, min.	-20 °C	Operating temperature	-20 °C...60 °C
Storage temperature	-20 °C...85 °C		

Probability of failure

MTBF	111 Years	SIL in compliance with IEC 61508	2
------	-----------	----------------------------------	---

Environmental Product Compliance

REACH SVHC	Lead 7439-92-1
------------	----------------

Rated data UL

UL certificate	E337701.pdf
----------------	-------------

Input EX

Input current	0...20 mA, 4...20mA	Input resistance, current	20 Ω + PTC 50 Ω
Line resistance in measuring circuit		Sensor	RTD: PT10, PT20, PT50, PT100, PT250, PT300, PT400, PT500, PT1000, Ni50, Ni100, Ni120, Ni1000, Thermocouples: B, E, J, K, N, R, S, T ; in compliance with IEC 60584-1 and L, U in compliance with DIN43710
	≤ 50 Ω		
Temperature input range	Configurable	Type	intrinsically safe circuit, RTD, TC, DC (mA)

Output

Type	active (as current source) or passive (as current sink)	Influence of load resistance	≤ 0.01% of span / 100 Ω
Output signal limit		Output current	0...23 mA, configurable: 0...20 / 4…20 / 20…0 / 20...4 mA, configurable downscale (3.5 mA) / upscale (23 mA) @ error
	3.8...20.5 mA / 0...20.5 mA (dependent on range)		
Load impedance current	≤ 600 Ω		

ACT20X
ACT20X-2HTI-2SAO-S

Weidmüller Interface GmbH & Co. KG
 Klingenbergstraße 26
 D-32758 Detmold
 Germany
 Fon: +49 5231 14-0
 Fax: +49 5231 14-292083
 www.weidmueller.com

Technical data**Alarm output**

Alarm function	Line interruption at the input, Short circuit at input, No supply voltage, Device error	Type	Relay, 1 NC (voltage-free)
Nominal switching voltage	≤ 125 V AC / 110 V DC (safe area) ≤ 32 V AC / 32 V DC (zone 2)	Continuous current	≤ 0.5 A AC / 0.3 A DC (safe zone), ≤ 0,5 A AC / 1 A DC (zone 2)
Power rating	≤ 62.5 VA / 32 W (safe area) ≤ 16 VA / 32 W (Zone 2)		

General specifications

Configuration	With FDT/DTM software	Voltage supply	19.2...31.2 V DC
Type of connection	Screw connection	Power consumption	≤ 1.4 W
Step response time	≤ 400 ms (with current), ≤ 1 s (with temperature)	Protection degree	IP20
Humidity	0...95 % (no condensation)		

Insulation coordination

EMC standards	DIN EN 61326, NE 21	Insulation voltage	2.6 kV (input / output)
Rated voltage	300 V		

Data for Ex applications (ATEX)

Voltage U_0	8.7 V DC	Current I_0	18.4 mA
Power P_0	40 mW	Marking	II (1) G [Ex ia Ga] IIC/IIB/ IIA, II (1) D [Ex ia Da] IIIC, I (M1) [Ex ia Ma] I
Installation location	Device installed in safe area, zone 2		

Safety-related basic specifications

Demand mode	High	Demand rate	3,000 s
Demand response time	Signal input: < 0.5 s (opto output), Temperature input: < 1.1 s (opto output)	Description of the "safe state"	analogue Output ≤ 3.6 mA or output ≥ 21 mA
Device type	B	Diagnostic test interval	30 s
Hardware fault tolerance (HFT)	0	Mean Time To Repair (MTTR)	24 h
Safe Failure Fraction (SFF)	90 %	T_{proof}	3 Years
Total failure rate for dangerous detected failures (λ_{DD})	367 FIT	Total failure rate for dangerous undetected failures (λ_{DU})	61 FIT
Total failure rate for safe detected failures (λ_{SD})	0 FIT	Total failure rate for safe undetected failures (λ_{SU})	234 FIT
Safety category	SIL 2	Probability of outage PFH	$6.1 \times 10^{-8} h^{-1}$

Safety-related specifications Low demand mode

Average Probability of Failure on Demand (PFD _{avg})	3.96×10^{-4} ($T_{proof} = 1$ year), 6.5×10^{-4} ($T_{proof} = 2$ years), 1.41×10^{-4} ($T_{proof} = 5$ years)
--	--

ACT20X
ACT20X-2HTI-2SAO-S

Weidmüller Interface GmbH & Co. KG
 Klingenbergstraße 26
 D-32758 Detmold
 Germany
 Fon: +49 5231 14-0
 Fax: +49 5231 14-292083
 www.weidmueller.com

Technical data
Connection data

Type of connection	Screw connection	Tightening torque, min.	0.4 Nm
Tightening torque, max.	0.6 Nm	Clamping range, rated connection	2.5 mm ²
Clamping range, min.	0.25 mm ²	Clamping range, max.	2.5 mm ²
Wire connection cross section AWG, min.	AWG 26	Wire connection cross section AWG, max.	AWG 12

Classifications

ETIM 6.0	EC002919	ETIM 7.0	EC002919
eClass 9.0	27-21-01-29	eClass 9.1	27-21-01-29
eClass 10.0	27-21-01-29	UNSPSC	30-21-18-01

Product information

Product information Weidmüller provides an extended guarantee period of 36 months for this device.

Approvals

Approvals



Approvals DNVGL;
 ROHS Conform

Downloads

Approval/Certificate/Document of Conformity	Certification SIL Certification DNV GL Certification ATEX Certification IECEX Certification UL Declaration of Conformity
Brochure/Catalogue	CAT 4.1 ELECTR 16/17 EN
Engineering Data	EPLAN_WSCAD
Engineering Data	STEP
Software	WI-Manager, DTM-Library for online installation V.1.2.0
User Documentation	Instruction sheet MAN SAFETY ACT20X-(2)HTI-(2)SAO Handbuch ACT20X- Serie, deutsch Manual ACT20X- series, english

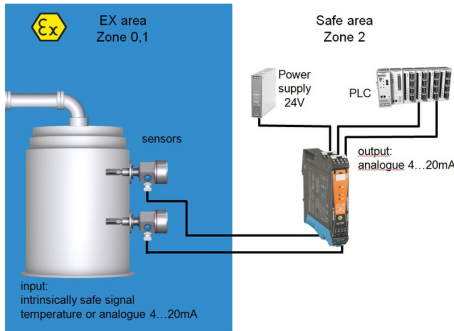
Data sheet

**ACT20X
ACT20X-2HTI-2SAO-S**

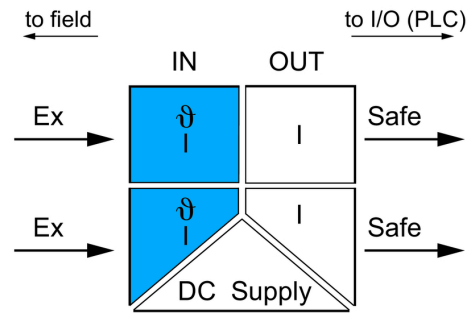
Weidmüller Interface GmbH & Co. KG
Klingenbergstraße 26
D-32758 Detmold
Germany
Fon: +49 5231 14-0
Fax: +49 5231 14-292083
www.weidmueller.com

Drawings

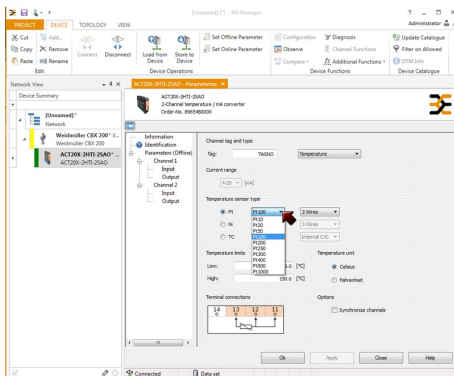
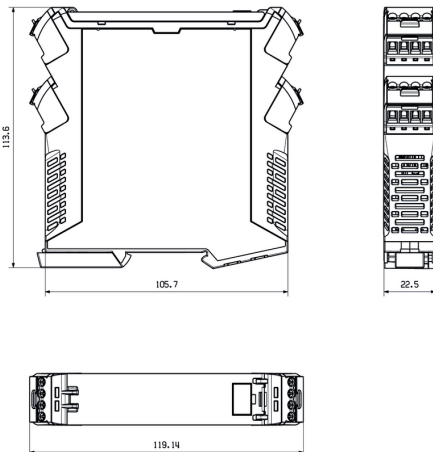
Application



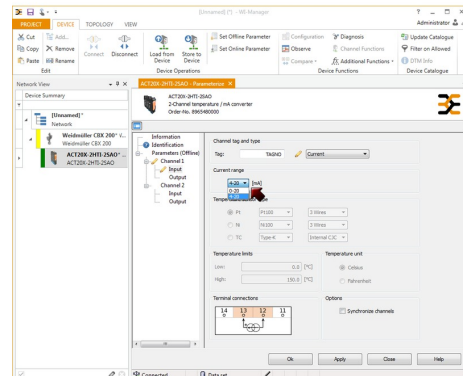
Block diagram



Dimensioned drawing



screenshot of temperature configuration with FDT2 / DTM software



screenshot of current configuration with FDT2 / DTM software

**ACT20X
ACT20X-2HTI-2SAO-S**

Weidmüller Interface GmbH & Co. KG
 Klingenbergstraße 26
 D-32758 Detmold
 Germany
 Fon: +49 5231 14-0
 Fax: +49 5231 14-292083
 www.weidmueller.com

Accessories
Accessories


Accessories for the analogue signal processing products:

- End plates: for components with terminal-block design
- Retaining clips: for mounting IP6X signal isolators and displays
- Calibration devices: for calibrating and setting analogue signal converters
- MICRO interface: for direct transmission to a controller thus minimizing the wiring overhead
- markers
- Programming adapter: for configuring PC-configurable modules
- Cross-connector
- Power supply modules / power supplies
- Optional connection terminals and cold-junction compensation terminals

General ordering data

Type	ACT20X-CJC-HTI-S PRT 11	Version
Order No.	1160640000	ACT20X, Signal converter/insulator, (CJC) cold-junction compensation
GTIN (EAN)	4032248948345	terminal for ACT20X thermal module, built-in PT100 sensor, Labelling
Qty.	1 pc(s).	for channel 1 (11,12,13,14)
Type	ACT20X-CJC-HTI-S PRT 21	Version
Order No.	1160650000	ACT20X, Signal converter/insulator, (CJC) cold-junction compensation
GTIN (EAN)	4032248948352	terminal for ACT20X thermal module, built-in PT100 sensor, Labelling
Qty.	1 pc(s).	for channel 2 (21, 22, 23, 24)

Accessories


Accessories for the analogue signal processing products:

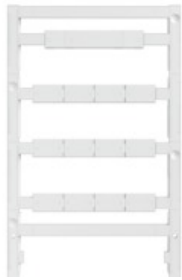
- End plates: for components with terminal-block design
- Retaining clips: for mounting IP6X signal isolators and displays
- Calibration devices: for calibrating and setting analogue signal converters
- MICRO interface: for direct transmission to a controller thus minimizing the wiring overhead
- markers
- Programming adapter: for configuring PC-configurable modules
- Cross-connector
- Power supply modules / power supplies
- Optional connection terminals and cold-junction compensation terminals

General ordering data

Type	CBX200 USB
Order No.	8978580000
GTIN (EAN)	4032248813759
Qty.	1 pc(s).

**ACT20X
ACT20X-2HTI-2SAO-S**

Weidmüller Interface GmbH & Co. KG
 Klingenbergstraße 26
 D-32758 Detmold
 Germany
 Fon: +49 5231 14-0
 Fax: +49 5231 14-292083
 www.weidmueller.com

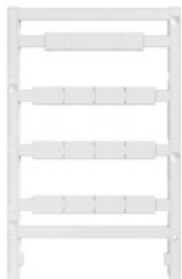
Accessories
Accessories


Accessories for the analogue signal processing products:

- End plates: for components with terminal-block design
- Retaining clips: for mounting IP6X signal isolators and displays
- Calibration devices: for calibrating and setting analogue signal converters
- MICRO interface: for direct transmission to a controller thus minimizing the wiring overhead
- markers
- Programming adapter: for configuring PC-configurable modules
- Cross-connector
- Power supply modules / power supplies
- Optional connection terminals and cold-junction compensation terminals

General ordering data

Type	ESG 8/13.5/43.3 SAI AU	Version
Order No.	1912130000	ESG, Device markers x 13.5 mm, PA 66, Colour: Transparent
GTIN (EAN)	4032248541164	
Qty.	5 pc(s).	

Accessories for network-compatible current measuring transducers


Accessories for the analogue signal processing products:

- End plates: for components with terminal-block design
- Retaining clips: for mounting IP6X signal isolators and displays
- Calibration devices: for calibrating and setting analogue signal converters
- MICRO interface: for direct transmission to a controller thus minimizing the wiring overhead
- markers
- Programming adapter: for configuring PC-configurable modules
- Cross-connector
- Power supply modules / power supplies
- Optional connection terminals and cold-junction compensation terminals

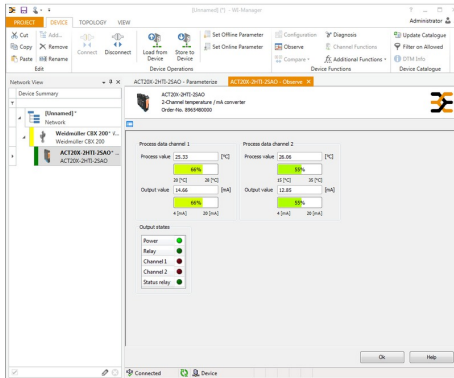
General ordering data

Type	ESG 6.6/20 BHZ 5.00/04	Version
Order No.	1082540000	ESG, Device markers x 20 mm, PA 66, Colour: white
GTIN (EAN)	4032248845439	
Qty.	200 pc(s).	

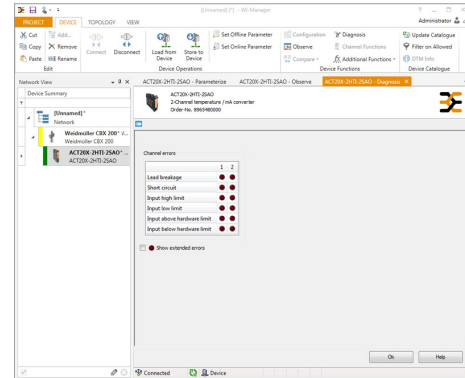
**ACT20X
ACT20X-2HTI-2SAO-S**

Weidmüller Interface GmbH & Co. KG
Klingenbergstraße 26
D-32758 Detmold
Germany
Fon: +49 5231 14-0
Fax: +49 5231 14-292083
www.weidmueller.com

Drawings



screenshot of "observe" with FDT2 / DTM software



screenshot of "diagnosis" with FDT2 / DTM software

Connection diagram

