

**ACT20X
ACT20X-HAI-SAO-S**

Weidmüller Interface GmbH & Co. KG
 Klingenbergstraße 26
 D-32758 Detmold
 Germany
 Fon: +49 5231 14-0
 Fax: +49 5231 14-292083
 www.weidmueller.com

Product image, Similar to illustration



The ACT20X-HAI-SAO/2HAI-2SAO HART-protocol transparent current-supply isolators are capable of transmitting 4...20 mA signals from Ex zone 0 into the safe zone.

External sensors can be supplied with power through the device.

Integrated alarm contacts issue an alert in the event of a malfunction; this makes troubleshooting easier and increases system availability.

The rail mounted current-supply isolators are optionally available in one- or two-channel versions.

With 11 mm width per channel, the devices need little space in the electrical cabinet.

General ordering data

Type	ACT20X-HAI-SAO-S
Order No.	8965430000
Version	EX signal isolating converter, Ex-input: 4 - 20 mA, Safe-output: 4-20mA, 1-channel
GTIN (EAN)	4032248785049
Qty.	1 pc(s).

Data sheet

ACT20X ACT20X-HAI-SAO-S

Weidmüller Interface GmbH & Co. KG
 Klingenbergstraße 26
 D-32758 Detmold
 Germany
 Fon: +49 5231 14-0
 Fax: +49 5231 14-292083
 www.weidmueller.com

Technical data

Dimensions and weights

Width	22.5 mm	Width (inches)	0.886 inch
Height	119.2 mm	Height (inches)	4.693 inch
Depth	113.6 mm	Depth (inches)	4.472 inch
Net weight	186 g		

Temperatures

Humidity	0...95 % (no condensation)	Operating temperature, max.	60 °C
Operating temperature, min.	-20 °C	Storage temperature, max.	85 °C
Storage temperature, min.	-20 °C	Operating temperature	-20 °C...60 °C
Storage temperature	-20 °C...85 °C		

Probability of failure

MTBF	177 Years	SFF	80 %
------	-----------	-----	------

Environmental Product Compliance

REACH SVHC	Lead 7439-92-1
------------	----------------

Rated data UL

UL certificate	E337701.pdf
----------------	-------------

Input EX

Input current	4...20mA	Input frequency	0.5...2.5 kHz @ 3.5...23 mA bi-directional HART® signal
Output signal in case of wire break	< 1 mA	Residual ripple (current loop)	< 7.5 mV _{eff}
Sensor supply	3.8...26 V DC	Type	intrinsically safe circuit, active (as current source) or passive (as current sink)
Voltage drop not powered	< 6 V	Voltage drop powered	< 4.5 V

Output

Load stability	≤ 0.01 % of end value / 100 Ω	Type	active (as current source) or passive (as current sink)
Influence of load resistance	≤ 0.01% of span / 100 Ω	2-wire supply	≤ 26 V DC
Output signal limit	< 28 mA	Output current	4...20 mA
Cut-off frequency (-3 dB)	0.5...2.5 kHz @ 3.5...23 mA bi-directional HART® signal	Load impedance current	≤ 600 Ω

ACT20X
ACT20X-HAI-SAO-S

Weidmüller Interface GmbH & Co. KG
 Klingenbergstraße 26
 D-32758 Detmold
 Germany
 Fon: +49 5231 14-0
 Fax: +49 5231 14-292083
 www.weidmueller.com

Technical data**Alarm output**

Alarm function	Signal limit exceeded, Line interruption at the input, No supply voltage, Device error	Type	Relay, 1 NC (voltage-free)
Nominal switching voltage	≤ 125 V AC / 110 V DC (safe area) ≤ 32 V AC / 32 V DC (zone 2)	Continuous current	≤ 0.5 A AC / 0.3 A DC (safe zone), ≤ 0,5 A AC / 1 A DC (zone 2)
Power rating	≤ 62.5 VA / 32 W (safe area) ≤ 16 VA / 32 W (Zone 2)		

General specifications

Configuration	With FDT/DTM software	Voltage supply	19.2...31.2 V DC
Type of connection	Screw connection	Power consumption	≤ 1.0 W
Accuracy	< 0.1% span	Temperature coefficient	< 0.01% of span/°C (TU)
Step response time	≤ 5 ms	Protection degree	IP20
Humidity	0...95 % (no condensation)		

Insulation coordination

EMC standards	DIN EN 61326, NE 21	Insulation voltage	2.6 kV (input / output)
Pollution severity	2	Rated voltage	300 V
Surge voltage category	II		

Data for Ex applications (ATEX)

Voltage U_0	Current loop 28 V / externally 10 V	Current I_0	Current loop 93 mA / externally 10 mA
Power P_0	Current loop 0.65 W / externally 0.1 W	Marking	II (1) G [Ex ia Ga] IIC/IIB/IIA, II (1) D [Ex ia Da] IIIC, I (M1) [Ex ia Ma] I
Installation location	Device installed in safe area, zone 2		

Safety-related basic specifications

Demand mode	High	Description of the "safe state"	analogue Output ≤ 3.6 mA or output ≥ 21 mA
Device type	A	Hardware fault tolerance (HFT)	0
Mean Time To Repair (MTTR)	24 h	Safe Failure Fraction (SFF)	80 %
T_{proof}	5 Years	Total failure rate for dangerous detected failures (λ_{DD})	173 FIT
Total failure rate for dangerous undetected failures (λ_{DU})	41 FIT	Total failure rate for safe detected failures (λ_{SD})	0 FIT
Total failure rate for safe undetected failures (λ_{SU})	0 FIT	Safety category	SIL 2
Probability of outage PFH	$4.1 \times 10^{-8} \text{ h}^{-1}$		

ACT20X
ACT20X-HAI-SAO-S

Weidmüller Interface GmbH & Co. KG
 Klingenbergstraße 26
 D-32758 Detmold
 Germany
 Fon: +49 5231 14-0
 Fax: +49 5231 14-292083
 www.weidmueller.com

Technical data**Safety-related specifications Low demand mode**

Average Probability of Failure on Demand (PFD _{avg})	1.92 x 10 ⁻⁴ (T _{proof} = 1 year), 3.67 x 10 ⁻⁴ (T _{proof} = 2 years), 8.92 x 10 ⁻⁴ (T _{proof} = 5 years), additional data in the safety manual
--	---

Connection data

Type of connection	Screw connection	Tightening torque, min.	0.4 Nm
Tightening torque, max.	0.6 Nm	Clamping range, rated connection	2.5 mm ²
Clamping range, min.	0.25 mm ²	Clamping range, max.	2.5 mm ²
Wire connection cross section AWG, min.	AWG 26	Wire connection cross section AWG, max.	AWG 12

Classifications

ETIM 6.0	EC002475	ETIM 7.0	EC002475
eClass 9.0	27-21-01-23	eClass 9.1	27-21-01-23
eClass 10.0	27-21-01-23	UNSPSC	30-21-18-01

Product information

Product information	Weidmüller provides an extended guarantee period of 36 months for this device.
---------------------	--

Approvals

Approvals



Approvals	DNVGL;
ROHS	Conform

Downloads

Approval/Certificate/Document of Conformity	Certification SIL Certification DNV GL Certification ATEX Certification IECEx Certification UL Declaration of Conformity
Brochure/Catalogue	CAT 4.1 ELECTR 16/17 EN
Engineering Data	EPLAN, WSCAD
Engineering Data	STEP
Software	WI-Manager, DTM-Library for online installation V.1.2.0
User Documentation	Instruction sheet MAN SAFETY ACT20X-HAI-SAO Handbuch ACT20X- Serie, deutsch Manual ACT20X- series, english

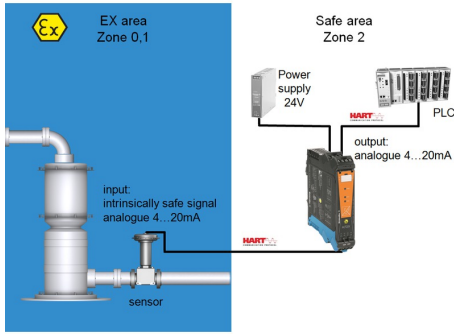
Data sheet

**ACT20X
ACT20X-HAI-SAO-S**

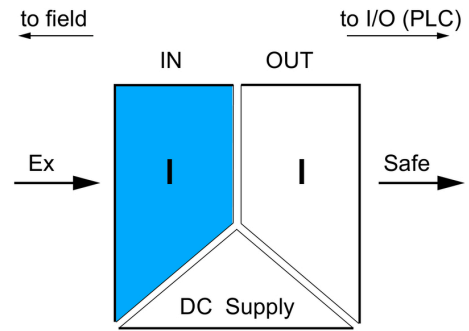
Weidmüller Interface GmbH & Co. KG
 Klingenbergstraße 26
 D-32758 Detmold
 Germany
 Fon: +49 5231 14-0
 Fax: +49 5231 14-292083
 www.weidmueller.com

Drawings

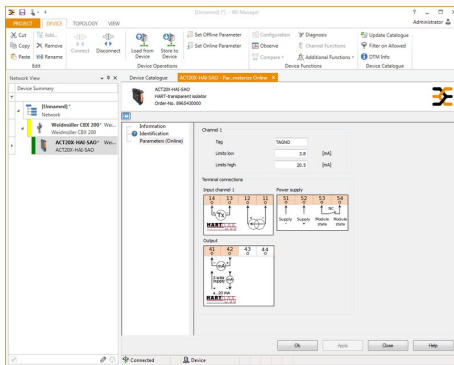
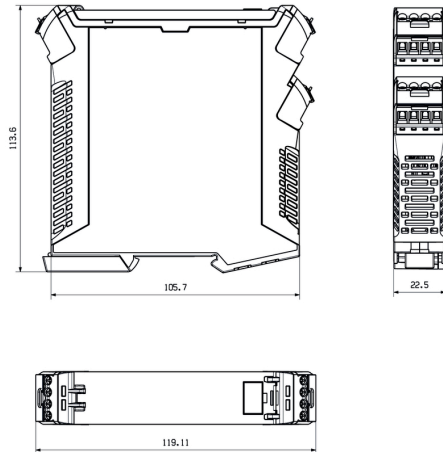
Application



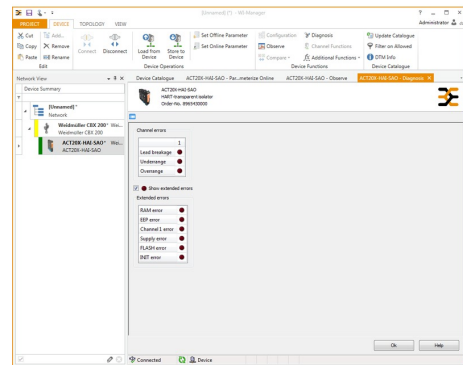
Block diagram



Dimensioned drawing



screenshot of configuration with FDT2 / DTM software



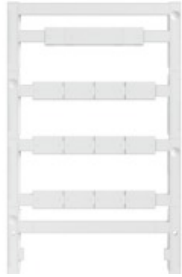
screenshot "diagnosis" with FDT2 / DTM software

**ACT20X
ACT20X-HAI-SAO-S**

Weidmüller Interface GmbH & Co. KG
Klingenbergstraße 26
D-32758 Detmold
Germany
Fon: +49 5231 14-0
Fax: +49 5231 14-292083
www.weidmueller.com

Accessories

Accessories



Accessories for the analogue signal processing products:

- End plates: for components with terminal-block design
- Retaining clips: for mounting IP6X signal isolators and displays
- Calibration devices: for calibrating and setting analogue signal converters
- MICRO interface: for direct transmission to a controller thus minimizing the wiring overhead
- markers
- Programming adapter: for configuring PC-configurable modules
- Cross-connector
- Power supply modules / power supplies
- Optional connection terminals and cold-junction compensation terminals

General ordering data

Type	CBX200 USB
Order No.	8978580000
GTIN (EAN)	4032248813759
Qty.	1 pc(s).

Accessories



Accessories for the analogue signal processing products:

- End plates: for components with terminal-block design
- Retaining clips: for mounting IP6X signal isolators and displays
- Calibration devices: for calibrating and setting analogue signal converters
- MICRO interface: for direct transmission to a controller thus minimizing the wiring overhead
- markers
- Programming adapter: for configuring PC-configurable modules
- Cross-connector
- Power supply modules / power supplies
- Optional connection terminals and cold-junction compensation terminals

General ordering data

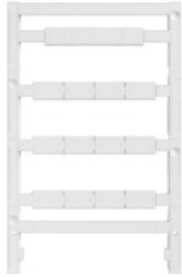
Type	ESG 8/13.5/43.3 SAI AU	Version	
Order No.	1912130000	ESG, Device markers x 13.5 mm, PA 66, Colour: Transparent	
GTIN (EAN)	4032248541164		
Qty.	5 pc(s).		

**ACT20X
ACT20X-HAI-SAO-S**

Weidmüller Interface GmbH & Co. KG
 Klingenbergstraße 26
 D-32758 Detmold
 Germany
 Fon: +49 5231 14-0
 Fax: +49 5231 14-292083
 www.weidmueller.com

Accessories

Accessories for network-compatible current measuring transducers



Accessories for the analogue signal processing products:

- End plates: for components with terminal-block design
- Retaining clips: for mounting IP6X signal isolators and displays
- Calibration devices: for calibrating and setting analogue signal converters
- MICRO interface: for direct transmission to a controller thus minimizing the wiring overhead
- markers
- Programming adapter: for configuring PC-configurable modules
- Cross-connector
- Power supply modules / power supplies
- Optional connection terminals and cold-junction compensation terminals

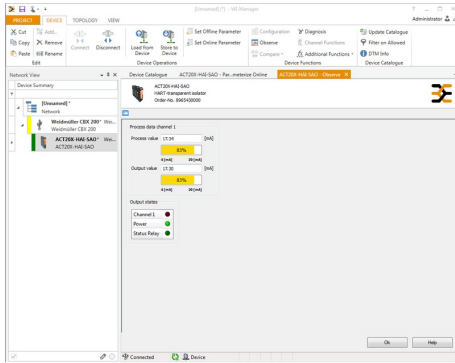
General ordering data

Type	ESG 6.6/20 BHZ 5.00/04	Version
Order No.	1082540000	ESG, Device markers x 20 mm, PA 66, Colour: white
GTIN (EAN)	4032248845439	
Qty.	200 pc(s).	

**ACT20X
ACT20X-HAI-SAO-S**

Weidmüller Interface GmbH & Co. KG
 Klingenbergstraße 26
 D-32758 Detmold
 Germany
 Fon: +49 5231 14-0
 Fax: +49 5231 14-292083
 www.weidmueller.com

Drawings



screenshot of "observe" with FDT2 / DTM software

Connection diagram

