

**Industrial Ethernet  
IE-XM-RJ45/RJ45**

**Weidmüller Interface GmbH & Co. KG**  
Klingenbergstraße 26  
D-32758 Detmold  
Germany  
Fon: +49 5231 14-0  
Fax: +49 5231 14-292083  
www.weidmueller.com



Mounting rail outlet, RJ45 junction design according to  
IEC 60603-7-51

**General ordering data**

Type	IE-XM-RJ45/RJ45
Order No.	<a href="#">8879050000</a>
Version	Mounting rail outlet, RJ45, RJ45-RJ45 coupler, IP20, Cat.6 (ISO/IEC 11801)
GTIN (EAN)	4032248614844
Qty.	1 pc(s).

Creation date May 1, 2020 5:36:16 AM CEST

Catalogue status 17.04.2020 / We reserve the right to make technical changes.

**Industrial Ethernet  
IE-XM-RJ45/RJ45**

**Weidmüller Interface GmbH & Co. KG**  
 Klingenbergstraße 26  
 D-32758 Detmold  
 Germany  
 Fon: +49 5231 14-0  
 Fax: +49 5231 14-292083  
 www.weidmueller.com

**Technical data**
**Dimensions and weights**

Net weight 49 g

**Temperatures**

Operating temperature, max. 70 °C      Operating temperature, min. -25 °C  
 Operating temperature -25 °C...70 °C

**Environmental Product Compliance**

REACH SVHC Lead 7439-92-1

**General data**

Connection 1	RJ45	Connection 2	RJ45
Description of article		Configuration	1 TE pitch dimension acc. to DIN 43880. insta-compatible Installation flange with mounting frame
Wiring	RJ45-RJ45 coupler Colour-coded pin assignment acc. to EIA/TIA T568 A (copper)	Colour	Light Grey
Housing main material	PA 66, UL 94: V-0	Category	Cat.6 (ISO/IEC 11801)
Type of mounting	TS 35	Protection degree	IP20
Plugging cycles	750		

**Electrical properties**

Contact resistance	≤ 20 mΩ	Current-carrying capacity at 50 °C	1 A
Dielectric strength, contact / contact	≥ 1000 V DC	Dielectric strength, contact / shield	≥ 1500 V DC
Insulation strength	500 MΩ	PoE / PoE+	conforming to IEEE 802.3at

**General standards**

Certificate No. (GERMLLOYD)	33451-06	Certificate no. (cULus)	E316369
Connector standard	IEC 60603-7-5		

**Classifications**

ETIM 6.0	EC001121	ETIM 7.0	EC001121
eClass 9.0	27-44-03-90	eClass 9.1	27-44-03-90
eClass 10.0	27-44-03-90	UNSPSC	43-17-27-10

**Approvals**

Approvals



ROHS Conform

**Data sheet****Industrial Ethernet  
IE-XM-RJ45/RJ45**

**Weidmüller Interface GmbH & Co. KG**  
Klingenbergstraße 26  
D-32758 Detmold  
Germany  
Fon: +49 5231 14-0  
Fax: +49 5231 14-292083  
www.weidmueller.com

**Technical data****Downloads**

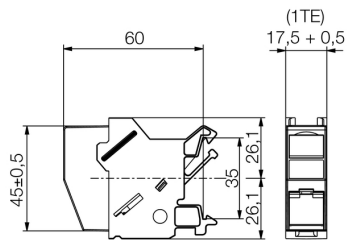
Approval/Certificate/Document of Conformity	<a href="#">GOST Approval</a> <a href="#">Germanischer Lloyd</a> <a href="#">DUXR.E316369</a>
Brochure/Catalogue	<a href="#">CAT 9 IETH 18/19 EN</a> <a href="#">FL FIELDWIRING EN</a> <a href="#">PI PROFINET CABLING EN</a>
Engineering Data	<a href="#">EPLAN, WSCAD, Zuken E3.S</a>
Engineering Data	<a href="#">STEP</a>
User Documentation	<a href="#">MAN IE GUIDE DE</a> <a href="#">MAN IE GUIDE EN</a> <a href="#">Manual</a>

**Industrial Ethernet  
IE-XM-RJ45/RJ45**

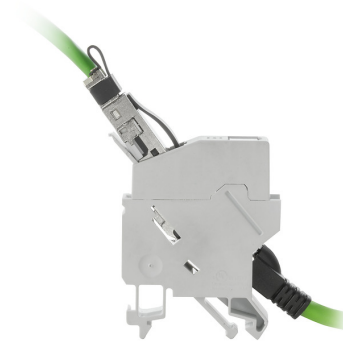
**Weidmüller Interface GmbH & Co. KG**  
Klingenbergstraße 26  
D-32758 Detmold  
Germany  
Fon: +49 5231 14-0  
Fax: +49 5231 14-292083  
www.weidmueller.com

**Drawings**

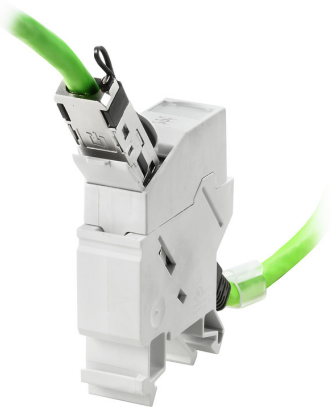
**Dimensioned drawing**



**Product image**



**Product image**



**Industrial Ethernet  
IE-XM-RJ45/RJ45**

**Weidmüller Interface GmbH & Co. KG**  
Klingenbergstraße 26  
D-32758 Detmold  
Germany  
Fon: +49 5231 14-0  
Fax: +49 5231 14-292083  
www.weidmueller.com

**Accessories****Outlet marker**

Markers for the labelling panel of terminal rail outlets from Weidmüller.

The benefits for you:

- white
- black
- on labelling sheet

**General ordering data**

Type	IE-DM
Order No.	<a href="#">8813500000</a>
GTIN (EAN)	4032248513345
Qty.	50 pc(s).