

**RS RJ45**  
**RS RJ45**

**Weidmüller Interface GmbH & Co. KG**  
Klingenbergstraße 26  
D-32758 Detmold  
Germany  
Fon: +49 5231 14-0  
Fax: +49 5231 14-292083  
www.weidmueller.com



The RS RJ45 interface range is a simple and convenient alternative for connecting modems, routers, computers or other communication elements with existing components in electrical cabinets.

They can be used to adapt the shielded RJ45 8-pole connectors to screw connections, or for coupling 2 data lines. The modules can be attached to standard TS35 mounting rails.

**General ordering data**

Type	RS RJ45
Order No.	<a href="#">8611320000</a>
Version	Interface, RS RJ45, RJ45 plug-in connectors, 8-pole, Screw connection
GTIN (EAN)	4032248272419
Qty.	10 pc(s).

**RS RJ45**  
**RS RJ45**

**Weidmüller Interface GmbH & Co. KG**  
 Klingenbergstraße 26  
 D-32758 Detmold  
 Germany  
 Fon: +49 5231 14-0  
 Fax: +49 5231 14-292083  
 www.weidmueller.com

**Technical data**
**Dimensions and weights**

Length	30 mm	Length (inches)	1.181 inch
Width	70 mm	Width (inches)	2.756 inch
Height	48 mm	Height (inches)	1.89 inch
Net weight	34.879 g		

**Temperatures**

Operating temperature, max.	55 °C	Operating temperature, min.	0 °C
Storage temperature, max.	70 °C	Storage temperature, min.	-40 °C
Operating temperature	0...55 °C	Storage temperature	-40...70 °C

**Environmental Product Compliance**

REACH SVHC Lead 7439-92-1

**Connection Data**

Connection on control side	RJ45 plug-in connectors	Number of poles (control side)	8-pole
Contact material (control side)	Phosphor-bronze 6&mu; AU	Connection (field side)	LM2N 3.5mm
Number of poles (field side)	8 P	Earthing	Yes
Transmission rate	Cat. 5, 100 MBit/s		

**Rating data**

Rated voltage	50 V	Rated current per connection	1 A
Total operating current	1.5 A		

**Insulation coordination (EN50178)**

According to	DIN EN 50178	Rated insulation voltage	< 50 V AC
Surge voltage category	III	Pollution severity level	2
Pulse voltage test (1,2/50µs)	0.8 kV	Insulation test voltage	0.35 kVAC

**Connection field**

Type of connection	Screw connection	Clamping range, min.	0.08 mm <sup>2</sup>
Clamping range, max.	2.08 mm <sup>2</sup>	Solid, min. H05(07) V-U	0.5 mm <sup>2</sup>
Solid, max. H05(07) V-U	1.5 mm <sup>2</sup>	Flexible, min. H05(07) V-K	0.5 mm <sup>2</sup>
Flexible, max. H05(07) V-K	1.5 mm <sup>2</sup>	Flexible with sleeve, min.	0.5 mm <sup>2</sup>
Sleeve with plastic collar, max.	0.75 mm <sup>2</sup>	Min. wire cross-section, AWG	AWG 28
Max. wire cross-section, AWG	AWG 14	Tightening torque, min.	0.2 Nm
Tightening torque, max.	0.25 Nm	Stripping length	5 mm

**Classifications**

ETIM 6.0	EC002780	ETIM 7.0	EC002780
eClass 9.0	27-14-11-52	eClass 9.1	27-14-11-52
eClass 10.0	27-14-11-52	UNSPSC	30-21-18-01

**Data sheet****RS RJ45**  
**RS RJ45****Weidmüller Interface GmbH & Co. KG**  
Klingenbergstraße 26  
D-32758 Detmold  
Germany  
Fon: +49 5231 14-0  
Fax: +49 5231 14-292083  
www.weidmueller.com**Technical data****Approvals**

Approvals



ROHS

Conform

**Downloads**Approval/Certificate/Document of  
Conformity[K321\\_01\\_11.pdf](#)

Engineering Data

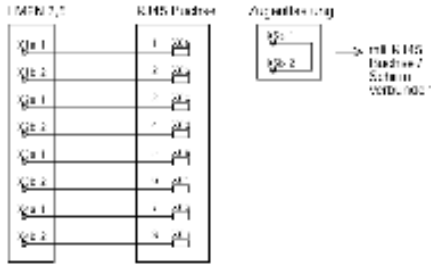
[WSCAD](#)

**Data sheet**

**RS RJ45**  
**RS RJ45**

**Weidmüller Interface GmbH & Co. KG**  
Klingenbergstraße 26  
D-32758 Detmold  
Germany  
Fon: +49 5231 14-0  
Fax: +49 5231 14-292083  
www.weidmueller.com

**Drawings**

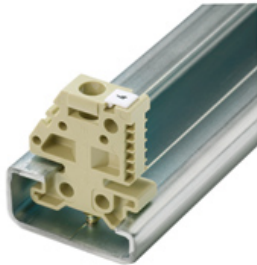


**RS RJ45**  
**RS RJ45**

**Weidmüller Interface GmbH & Co. KG**  
Klingenbergstraße 26  
D-32758 Detmold  
Germany  
Fon: +49 5231 14-0  
Fax: +49 5231 14-292083  
www.weidmueller.com

**Accessories**

**End bracket**



**Klippon® Connect with clamping yoke Technology**  
The high reliability and variety of designs of the terminal blocks with clamping yoke connections make planning easier and optimises operational safety. Klippon® Connect provides a proven response to a range of different requirements.

**General ordering data**

Type	EWK 2	Version
Order No.	<a href="#">0199360000</a>	Accessories, End bracket
GTIN (EAN)	4008190023546	
Qty.	50 pc(s).	
Type	EW 35	Version
Order No.	<a href="#">0383560000</a>	Accessories, End bracket
GTIN (EAN)	4008190181314	
Qty.	50 pc(s).	

**TS 35**



**General ordering data**

Type	TS 35X7.5 2M/ST/ZN	Version
Order No.	<a href="#">0383400000</a>	Rail, TS 35, TS 35 x 7.5, without slot, Steel, galvanic zinc plated and passivated
GTIN (EAN)	4008190088026	
Qty.	2 m	
Type	TS 35X15/2.3 2M/ST/ZN	Version
Order No.	<a href="#">0498000000</a>	Rail, TS 35, TS 35 x 15, without slot, Steel, galvanic zinc plated and passivated
GTIN (EAN)	4008190042493	
Qty.	2 m	