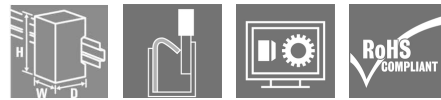
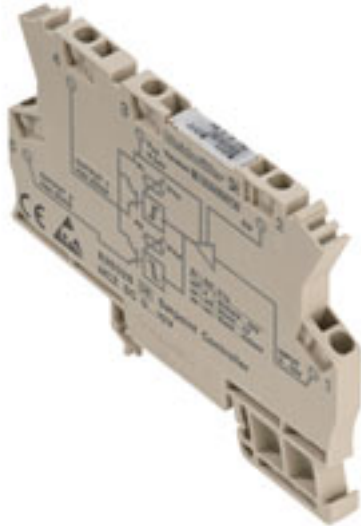


**MCZ SERIES**  
**MCZ SC 0-10V**

**Weidmüller Interface GmbH & Co. KG**  
Klingenbergstraße 26  
D-32758 Detmold  
Germany  
Fon: +49 5231 14-0  
Fax: +49 5231 14-292083  
www.weidmueller.com

**Product image****MCZ: The smallest solution**

- The smallest analogue signal converter in terminal block format on the market
- Space-saving conversion of analogue signals in the control cabinet thanks to the slim, 6 mm wide module width
- Simple wiring with plug-in cross-connectors

**General ordering data**

Type	MCZ SC 0-10V
Order No.	<a href="#">8260280000</a>
Version	Limit value monitoring, Input : 0-10 V, Output 2 x transistor
GTIN (EAN)	4008 190985417
Qty.	10 pc(s).

**MCZ SERIES**  
**MCZ SC 0-10V**

**Weidmüller Interface GmbH & Co. KG**  
 Klingenbergstraße 26  
 D-32758 Detmold  
 Germany  
 Fon: +49 5231 14-0  
 Fax: +49 5231 14-292083  
 www.weidmueller.com

**Technical data****Dimensions and weights**

Length	91 mm	Length (inches)	3.583 inch
Width	6 mm	Width (inches)	0.236 inch
Depth	63.2 mm	Depth (inches)	2.488 inch
Weight	30 g	Net weight	29.6 g

**Temperatures**

Humidity	40 °C / 93 % rel. humidity, no condensation	Operating temperature, max.	50 °C
Operating temperature, min.	0 °C	Storage temperature, max.	60 °C
Storage temperature, min.	-25 °C	Operating temperature	0 °C...50 °C
Storage temperature	-25 °C...60 °C		

**Environmental Product Compliance**

REACH SVHC Lead 7439-92-1

**Rated data UL**

Certificate No. (cURus) E141197

**Input**

Number of inputs	1	Input voltage	0...10 V
Input resistance, voltage	60 kΩ		

**Output**

Number of outputs	2	Cut-off frequency (-3 dB)	100 Hz
Contact assembly	Transistor output, double switch output PNP	Switching thresholds	Via 2 potentiometers (12 turns)

**General data**

Configuration	Potentiometer	Current consumption	15 mA
Galvanic isolation	Without isolation	Rail	TS 35
Step response time	< 250 μs (switching threshold at 90% of max. input signal; R <sub>I</sub> ≤ 1 kΩ)	Temperature coefficient	max. 250 ppm/K
Voltage supply	24 V DC ± 20 %		

**Insulation coordination**

EMC standards	EN 55011, EN 61000-6	Galvanic isolation	Without isolation
Insulation voltage input or output/rail	4 kV <sub>eff</sub> / 1 min.		

**Connection data**

Type of connection	Tension-clamp connection	Clamping range, rated connection	1.5 mm <sup>2</sup>
Clamping range, min.	0.5 mm <sup>2</sup>	Clamping range, max.	1.5 mm <sup>2</sup>

**MCZ SERIES  
MCZ SC 0-10V**

**Weidmüller Interface GmbH & Co. KG**  
Klingenbergstraße 26  
D-32758 Detmold  
Germany  
Fon: +49 5231 14-0  
Fax: +49 5231 14-292083  
www.weidmueller.com

**Technical data**

**Classifications**

ETIM 6.0	EC002654	ETIM 7.0	EC002654
eClass 9.0	27-21-01-22	eClass 9.1	27-21-01-22
eClass 10.0	27-21-01-22	UNSPSC	30-21-19-17

**Approvals**

Approvals



ROHS Conform

**Downloads**

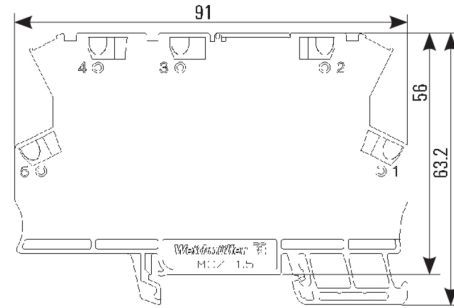
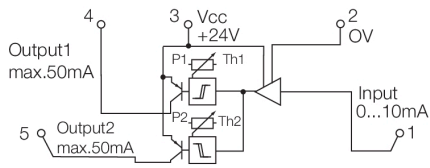
Approval/Certificate/Document of Conformity	<a href="#">Declaration of Conformity</a>
Brochure/Catalogue	<a href="#">CAT 4.1 ELECTR 16/17 EN</a>
Engineering Data	<a href="#">EPLAN, WSCAD</a>
Engineering Data	<a href="#">STEP</a>
User Documentation	<a href="#">Instruction sheet</a>

**MCZ SERIES  
MCZ SC 0-10V**

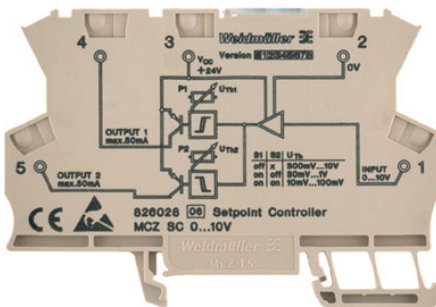
**Weidmüller Interface GmbH & Co. KG**  
 Klingenbergstraße 26  
 D-32758 Detmold  
 Germany  
 Fon: +49 5231 14-0  
 Fax: +49 5231 14-292083  
 www.weidmueller.com

**Drawings**

**Connection diagram**



dimensions



**MCZ SERIES  
MCZ SC 0-10V**

**Weidmüller Interface GmbH & Co. KG**  
Klingenbergstraße 26  
D-32758 Detmold  
Germany  
Fon: +49 5231 14-0  
Fax: +49 5231 14-292083  
www.weidmueller.com

**Accessories**

**End bracket**



**Klippon® Connect with clamping yoke Technology**

The high reliability and variety of designs of the terminal blocks with clamping yoke connections make planning easier and optimises operational safety. Klippon® Connect provides a proven response to a range of different requirements.

**General ordering data**

Type	EW 35	Version
Order No.	<a href="#">0383560000</a>	Accessories, End bracket
GTIN (EAN)	4008190181314	
Qty.	50 pc(s).	

**ZQV 4N**



**Spring connection with tension clamp Technology**

Tension clamp technology is a universal contact system for all common conductor connection types. Its fantastic level of flexibility makes the tension clamp a profitable alternative connection.

**General ordering data**

Type	ZQV 4N/4 GE	Version
Order No.	<a href="#">1762620000</a>	Accessories, Cross-connector, 32 A
GTIN (EAN)	4032248169771	
Qty.	60 pc(s).	
Type	ZQV 4N/3 GE	Version
Order No.	<a href="#">1762630000</a>	Accessories, Cross-connector, 32 A
GTIN (EAN)	4032248169788	
Qty.	60 pc(s).	
Type	ZQV 4N/10 GE	Version
Order No.	<a href="#">1758260000</a>	Accessories, Cross-connector, 32 A
GTIN (EAN)	4032248169764	
Qty.	20 pc(s).	
Type	ZQV 4N/2 GE	Version
Order No.	<a href="#">1758250000</a>	Accessories, Cross-connector, 32 A
GTIN (EAN)	4032248169795	
Qty.	60 pc(s).	

**MCZ SERIES  
MCZ SC 0-10V**

**Weidmüller Interface GmbH & Co. KG**  
Klingenbergstraße 26  
D-32758 Detmold  
Germany  
Fon: +49 5231 14-0  
Fax: +49 5231 14-292083  
www.weidmueller.com

**Accessories**

**Accessories**



The MCZ R relay couplers, with a width of only 6 mm, are the thinnest in their class.

They are distinguished by the following features:

- Tension clamp connection
- Integrated cross-connection in input/output.  
Clampable conductor cross-section is 0.5 to 1.5 mm<sup>2</sup>

**General ordering data**

Type	AP MCZ1.5 1674	Version
Order No.	<a href="#">8389030000</a>	End plate, OMNIMATE Housing - TERMINALBOX grey-beige, End plate,
GTIN (EAN)	4008190386849	Width: 1.5 mm
Qty.	50 pc(s).	

**Blank**



WS markers are the perfect match for the W-series connectors. Thanks to their system compatibility, the WS tags can also be used with the I-series and the Z-series. The large marking surfaces do not only permit long character strings but also multi-line text.

WS markers are ideal for labels with long, customised character strings. Thanks to the proven MultiCard format, printing with laser printer, PrintJet ADVANCED, plotter or MC-Mobilo is possible.

- Can be fitted in strips or individually
- Markers in proven MultiCard format

**For custom printing:** Please send us a file of our labeling software M-Print PRO or M-Print PRO Online (without installation) for your labeling specifications.

**General ordering data**

Type	WS 10/6 MC NE WS	Version
Order No.	<a href="#">1828450000</a>	WS, Terminal marker, 10 x 6 mm, Pitch in mm (P): 6.00 Weidmueller,
GTIN (EAN)	4032248350513	Allen-Bradley, white
Qty.	600 pc(s).	