

**RSSD
RS SD37B LP3R**

Weidmüller Interface GmbH & Co. KG
 Klingenbergstraße 26
 D-32758 Detmold
 Germany
 Fon: +49 5231 14-0
 Fax: +49 5231 14-292083
 www.weidmueller.com



Similar to illustration

Passive interfaces for signal transmission on a SubD connector equipped with a clamping-yoke connection in accordance with IEC 807-2 / DIN 41652. The main features include:

- Group with 9-, 15-, 37- and 50-pole male and female connectors.
- One-to-one electrical connection between controller and field connections.
- Very compact triple-level modules can be attached to conventional TS35 or TS32 mounting rails.
- Pin on SubD for the earth connection.

General ordering data

Type	RS SD37B LP3R
Order No.	8019910000
Version	Interface, RSSD, D-sub connectors, acc. to IEC 60807 / DIN 41652, 37-pole female, Screw connection
GTIN (EAN)	4008190003944
Qty.	1 pc(s).

Creation date May 1, 2020 8:00:33 AM CEST

**RSSD
RS SD37B LP3R**

Weidmüller Interface GmbH & Co. KG
 Klingenbergstraße 26
 D-32758 Detmold
 Germany
 Fon: +49 5231 14-0
 Fax: +49 5231 14-292083
 www.weidmueller.com

Technical data**Dimensions and weights**

Length	80 mm	Length (inches)	3.15 inch
Width	87 mm	Width (inches)	3.425 inch
Height	80 mm	Height (inches)	3.15 inch
Net weight	172.02 g		

Temperatures

Operating temperature, max.	55 °C	Operating temperature, min.	0 °C
Storage temperature, max.	70 °C	Storage temperature, min.	-40 °C
Operating temperature	0...55 °C	Storage temperature	-40...70 °C

Environmental Product Compliance

REACH SVHC Lead 7439-92-1

Connection Data

Connection on control side	D-sub connectors, acc. to IEC 60807 / DIN 41652	Number of poles (control side)	37-pole female
Connection (field side)	LP3R 5.08mm	Earthing	Yes
Protective earth connection	Flat-blade contact		

Rating data

Rated voltage	100 V	Rated current per connection	1.5 A
---------------	-------	------------------------------	-------

Insulation coordination (EN50178)

According to	DIN EN 50178	Rated insulation voltage	100 V
Surge voltage category	II	Pollution severity level	2
Pulse voltage test (1,2/50µs)	0.8 kV		

Connection field

Type of connection	Screw connection	Clamping range, min.	0.13 mm ²
Clamping range, max.	6 mm ²	Solid, min. H05(07) V-U	0.5 mm ²
Solid, max. H05(07) V-U	6 mm ²	Flexible, min. H05(07) V-K	0.5 mm ²
Flexible, max. H05(07) V-K	4 mm ²	Flexible with sleeve, max.	2.5 mm ²
Flexible with sleeve, min.	0.5 mm ²	Sleeve with plastic collar, max.	2.5 mm ²
Min. wire cross-section, AWG	AWG 26	Max. wire cross-section, AWG	AWG 12
Tightening torque, min.	0.5 Nm	Tightening torque, max.	0.6 Nm
Stripping length	6 mm		

Classifications

ETIM 6.0	EC002780	ETIM 7.0	EC002780
eClass 9.0	27-14-11-52	eClass 9.1	27-14-11-52
eClass 10.0	27-14-11-52	UNSPSC	30-21-18-01

Data sheet

**RSSD
RS SD37B LP3R**

Weidmüller Interface GmbH & Co. KG
Klingenbergstraße 26
D-32758 Detmold
Germany
Fon: +49 5231 14-0
Fax: +49 5231 14-292083
www.weidmueller.com

Technical data

Approvals

Approvals



ROHS

Conform

Downloads

Engineering Data

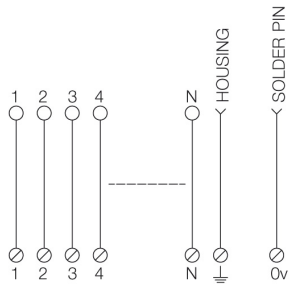
[WSCAD](#)

Data sheet

RSSD
RS SD37B LP3R

Weidmüller Interface GmbH & Co. KG
Klingenbergstraße 26
D-32758 Detmold
Germany
Fon: +49 5231 14-0
Fax: +49 5231 14-292083
www.weidmueller.com

Drawings



N: Number of poles

**RSSD
RS SD37B LP3R**

Weidmüller Interface GmbH & Co. KG
 Klingenbergstraße 26
 D-32758 Detmold
 Germany
 Fon: +49 5231 14-0
 Fax: +49 5231 14-292083
 www.weidmueller.com

Accessories

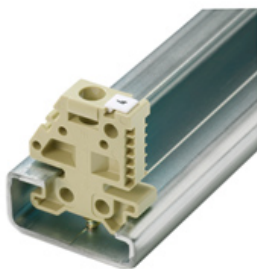
TS 32



General ordering data

Type	TS 32X15 2M/ST/ZN	Version
Order No.	0122800000	Rail, TS 32, without slot, Steel, galvanic zinc plated and passivated
GTIN (EAN)	4008190066307	
Qty.	2 m	
Type	TS 32X15/LL 2M/ST/ZN	Version
Order No.	0514400000	Rail, TS 32, with slot, Steel, galvanic zinc plated and passivated
GTIN (EAN)	4008190086152	
Qty.	2 m	
Type	TS 32X15 2M/AL/BK	Version
Order No.	0169300000	Rail, TS 32, without slot, Aluminium, untreated
GTIN (EAN)	4008190105167	
Qty.	2 m	

End bracket



Klippon® Connect with clamping yoke Technology

The high reliability and variety of designs of the terminal blocks with clamping yoke connections make planning easier and optimises operational safety. Klippon® Connect provides a proven response to a range of different requirements.

General ordering data

Type	EWK 1	Version
Order No.	0206160000	Accessories, End bracket
GTIN (EAN)	4008190080020	
Qty.	50 pc(s).	
Type	EWK 2	Version
Order No.	0199360000	Accessories, End bracket
GTIN (EAN)	4008190023546	
Qty.	50 pc(s).	
Type	EW 35	Version
Order No.	0383560000	Accessories, End bracket
GTIN (EAN)	4008190181314	
Qty.	50 pc(s).	

RSSD RS SD37B LP3R

Weidmüller Interface GmbH & Co. KG
 Klingenbergstraße 26
 D-32758 Detmold
 Germany
 Fon: +49 5231 14-0
 Fax: +49 5231 14-292083
 www.weidmueller.com

Accessories

Type	EWK 1 ALT	Version
Order No.	0495160000	Accessories, End bracket
GTIN (EAN)	4008190160777	
Qty.	50 pc(s).	
Type	WEW 32/1	Version
Order No.	1067600000	W-Series, End bracket
GTIN (EAN)	4008190099657	
Qty.	50 pc(s).	

TS 35



General ordering data

Type	TS 35X7.5 2M/ST/ZN	Version
Order No.	0383400000	Rail, TS 35, TS 35 x 7.5, without slot, Steel, galvanic zinc plated and passivated
GTIN (EAN)	4008190088026	
Qty.	2 m	
Type	TS 35X15/LL 1M/ST/ZN	Version
Order No.	0236510000	Rail, TS 35, TS 35 x 15, with slot, Steel, galvanic zinc plated and passivated
GTIN (EAN)	4008190017699	
Qty.	1 m	
Type	TS 35X7.5/LL 2M/ST/ZN	Version
Order No.	0514500000	Rail, TS 35, TS 35 x 7.5, with slot, Steel, galvanic zinc plated and passivated
GTIN (EAN)	4008190046019	
Qty.	2 m	
Type	TS 35X15 2M/ST/ZN	Version
Order No.	0236400000	Rail, TS 35, TS 35 x 15, without slot, Steel, galvanic zinc plated and passivated
GTIN (EAN)	4008190114558	
Qty.	2 m	
Type	TS 35X7.5/LL 1M/ST/ZN	Version
Order No.	0514510000	Rail, TS 35, TS 35 x 7.5, with slot, Steel, galvanic zinc plated and passivated
GTIN (EAN)	4008190116620	
Qty.	1 m	
Type	TS 35X15/2.3 2M/ST/ZN	Version
Order No.	0498000000	Rail, TS 35, TS 35 x 15, without slot, Steel, galvanic zinc plated and passivated
GTIN (EAN)	4008190042493	
Qty.	2 m	
Type	TS 35X7.5 1M/ST/ZN	Version
Order No.	0383410000	Rail, TS 35, TS 35 x 7.5, without slot, Steel, galvanized, chromium-plated
GTIN (EAN)	4008190115623	
Qty.	1 m	

Creation date May 1, 2020 8:00:33 AM CEST

Catalogue status 17.04.2020 / We reserve the right to make technical changes.

Data sheet**RSSD
RS SD37B LP3R**

Weidmüller Interface GmbH & Co. KG
Klingenbergstraße 26
D-32758 Detmold
Germany
Fon: +49 5231 14-0
Fax: +49 5231 14-292083
www.weidmueller.com

Accessories

Type	TS 35X7.5 2M/AL/BK	Version
Order No.	0330800000	Rail, TS 35, TS 35 x 7.5, without slot, Aluminium, untreated
GTIN (EAN)	4008190100650	
Qty.	2 m	
Type	TS 35X15/LL 2M/ST/ZN	Version
Order No.	0236500000	Rail, TS 35, TS 35 x 15, with slot, Steel, galvanic zinc plated and passivated
GTIN (EAN)	4008190183967	
Qty.	2 m	