

**D-SERIES DRI  
SDI 1CO P**

**Weidmüller Interface GmbH & Co. KG**  
Klingenbergstraße 26  
D-32758 Detmold  
Germany  
Fon: +49 5231 14-0  
Fax: +49 5231 14-292083  
www.weidmueller.com

**Product image**

Accessories for D-SERIES relays include:

- Relay bases
- LED / Protective modules
- Metal retaining clips

**General ordering data**

Type	SDI 1CO P
Order No.	<a href="#">7760056364</a>
Version	D-SERIES DRI, Relay bases, Number of contacts: 1 CO contact, Continuous current: 12 A, PUSH IN
GTIN (EAN)	6944 169772283
Qty.	20 pc(s).

Creation date May 1, 2020 2:04:19 PM CEST

Catalogue status 17.04.2020 / We reserve the right to make technical changes.

**D-SERIES DRI  
SDI 1CO P**

**Weidmüller Interface GmbH & Co. KG**  
 Klingenbergstraße 26  
 D-32758 Detmold  
 Germany  
 Fon: +49 5231 14-0  
 Fax: +49 5231 14-292083  
 www.weidmueller.com

**Technical data****Dimensions and weights**

Width	15.9 mm	Width (inches)	0.626 inch
Height	102.1 mm	Height (inches)	4.02 inch
Depth	42.7 mm	Depth (inches)	1.681 inch
Net weight	36.75 g		

**Temperatures**

Humidity	5...85 %, no condensation	Operating temperature, max.	55 °C
Operating temperature, min.	-40 °C	Storage temperature, max.	85 °C
Storage temperature, min.	-40 °C	Operating temperature	-40 °C...85 °C
Storage temperature	-40 °C...85 °C		

**Environmental Product Compliance**

REACH SVHC	Lead 7439-92-1
------------	----------------

**Rated data UL**

Certificate No. (cURus)	E312083
-------------------------	---------

**Output**

Rated switching voltage	250 V AC	Max. switching voltage, AC	250 V
Continuous current	12 A		

**Contact data**

Contact type	1 CO contact
--------------	--------------

**General data**

Rail	TS 35	Colour	black
UL 94 flammability rating	V-0		

**Insulation coordination**

Rated voltage	300 V	Surge voltage category	III
Pollution severity	2	Insulating material group	IIIb
Protection degree	IP20	Dielectric strength, Input/Output	5 kV <sub>eff</sub> / 1min
Creepage and clearance distance input – output	≥ 3 mm	Impulse withstand voltage at neighbouring contacts	4.8 kV (1.2/50 µs)

**Further details of approvals / standards**

Certificate No. (cURus)	E312083
-------------------------	---------

**D-SERIES DRI  
SDI 1CO P**

**Weidmüller Interface GmbH & Co. KG**  
Klingenbergstraße 26  
D-32758 Detmold  
Germany  
Fon: +49 5231 14-0  
Fax: +49 5231 14-292083  
www.weidmueller.com

**Technical data**
**Connection data**

Wire connection method	PUSH IN	Stripping length, rated connection	10 mm
Clamping range, rated connection	1.5 mm <sup>2</sup>	Clamping range, min.	0.14 mm <sup>2</sup>
Clamping range, max.	1.5 mm <sup>2</sup>	Wire connection cross section AWG, min.	AWG 26
Wire connection cross section AWG, max.	AWG 16	Wire cross-section, solid, min.	0.14 mm <sup>2</sup>
Wire cross-section, solid, max.	1.5 mm <sup>2</sup>	Wire connection cross-section, finely stranded, min.	0.14 mm <sup>2</sup>
Wire connection cross section, finely stranded, max.	1.5 mm <sup>2</sup>	Wire connection cross-section, finely stranded with wire-end ferrules DIN 46228/4, min.	0.14 mm <sup>2</sup>
Wire connection cross-section, finely stranded with wire-end ferrules DIN 46228/4, max.	1 mm <sup>2</sup>	Conductor cross-section, flexible, AEH (DIN 46228-1), min.	0.14 mm <sup>2</sup>
Conductor cross-section, flexible, AEH (DIN 46228-1), max.	1.5 mm <sup>2</sup>	Blade size	0.4 x 2.5 mm

**Classifications**

ETIM 6.0	EC001456	ETIM 7.0	EC001456
eClass 9.0	27-37-16-03	eClass 9.1	27-37-16-03
eClass 10.0	27-37-16-03		

**Product information**

Product information	Only connection A2 with the cross-connection SCM/SDI P CC (art. no. 7760056366) can be bridged on this socket.
	The protection module (RC filter) RIM 3 110/230VAC LED with order no. 7760056045 is not compatible with this socket.

**Approvals**

Approvals



ROHS Conform

**Downloads**

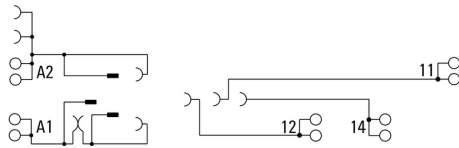
Approval/Certificate/Document of Conformity	<a href="#">EU Konformitätserklärung / EU Declaration of Conformity</a>
Engineering Data	<a href="#">EPLAN</a>
Engineering Data	<a href="#">STEP</a>

**D-SERIES DRI  
SDI 1CO P**

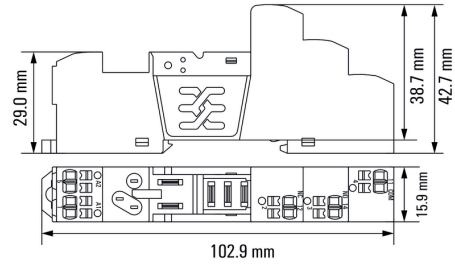
**Weidmüller Interface GmbH & Co. KG**  
 Klingenbergstraße 26  
 D-32758 Detmold  
 Germany  
 Fon: +49 5231 14-0  
 Fax: +49 5231 14-292083  
 www.weidmueller.com

**Drawings**

**Wiring diagram**



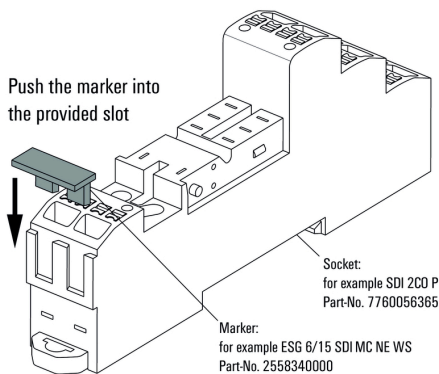
**Dimensional drawing**



**Example of use**

**How to install marker**

on PUSH IN connection sockets (one slot available)

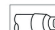
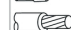
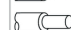


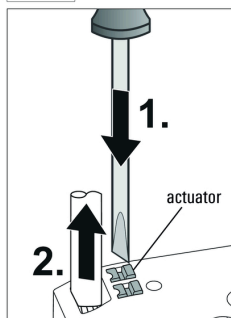
**How to install marker**

on PUSH IN connection sockets (one slot available)

**Miscellaneous**

**Removal of cables**

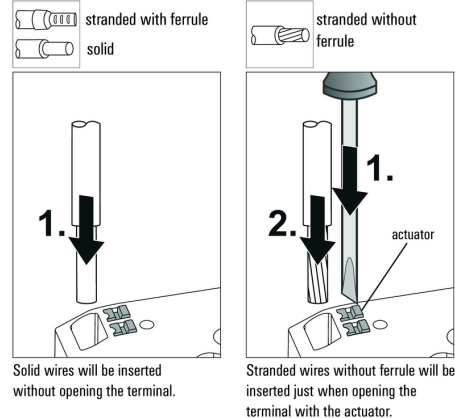
-  stranded with ferrule
-  stranded without ferrule
-  solid



Wires will be disconnected just when opening the terminal with the actuator.

**Miscellaneous**

**Insert flexible and solid cables**



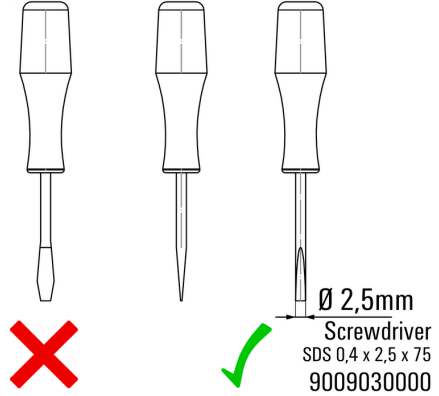
Solid wires will be inserted without opening the terminal.

Stranded wires without ferrule will be inserted just when opening the terminal with the actuator.

**Miscellaneous**

**Recommended screwdriver**

to push the actuator in PUSH IN



## D-SERIES DRI SDI 1CO P

**Weidmüller Interface GmbH & Co. KG**  
 Klingenbergstraße 26  
 D-32758 Detmold  
 Germany  
 Fon: +49 5231 14-0  
 Fax: +49 5231 14-292083  
 www.weidmueller.com

### Mating connector (fully pluggable)

#### With LED and test button



Relay from the D-SERIES DRI

- 1 or 2 CO contacts
- Robust industrial plug-in connections
- Optional: latching / spring return operable test button with coloured control voltage identification (AC coil: red / DC coil: blue)
- Optional: Mechanical switch position indication (for version with test button)
- Optional: Bright status LED (AC coil: red / DC coil: green)
- Optional: free-wheeling diode

#### General ordering data

Type	DRI314615LT	Version
Order No.	<a href="#">7760056319</a>	D-SERIES DRI, Relay, Number of contacts: 1 CO contact with test button AgSnO, Rated control voltage: 115 V AC, Continuous current:
GTIN (EAN)	6944169740244	10 A, Flat blade connections (4.7 mm x 0.5 mm)
Qty.	20 pc(s).	
Type	DRI314524LT	Version
Order No.	<a href="#">7760056318</a>	D-SERIES DRI, Relay, Number of contacts: 1 CO contact with test button AgSnO, Rated control voltage: 24 V AC, Continuous current: 10
GTIN (EAN)	6944169740237	A, Flat blade connections (4.7 mm x 0.5 mm)
Qty.	20 pc(s).	
Type	DRI314730LT	Version
Order No.	<a href="#">7760056320</a>	D-SERIES DRI, Relay, Number of contacts: 1 CO contact with test button AgSnO, Rated control voltage: 230 V AC, Continuous current:
GTIN (EAN)	6944169740251	10 A, Flat blade connections (4.7 mm x 0.5 mm)
Qty.	20 pc(s).	

#### With LED



Relay from the D-SERIES DRI

- 1 or 2 CO contacts
- Robust industrial plug-in connections
- Optional: latching / spring return operable test button with coloured control voltage identification (AC coil: red / DC coil: blue)
- Optional: Mechanical switch position indication (for version with test button)
- Optional: Bright status LED (AC coil: red / DC coil: green)
- Optional: free-wheeling diode

#### General ordering data

Type	DRI314110L	Version
Order No.	<a href="#">7760056306</a>	D-SERIES DRI, Relay, Number of contacts: 1 CO contact AgSnO,
GTIN (EAN)	6944169740114	Rated control voltage: 110 V DC, Continuous current: 10 A, Flat blade
Qty.	20 pc(s).	connections (4.7 mm x 0.5 mm)
Type	DRI314024L	Version
Order No.	<a href="#">7760056304</a>	D-SERIES DRI, Relay, Number of contacts: 1 CO contact AgSnO,
GTIN (EAN)	6944169740091	Rated control voltage: 24 V DC, Continuous current: 10 A, Flat blade
Qty.	20 pc(s).	connections (4.7 mm x 0.5 mm)

**D-SERIES DRI  
SDI 1CO P**

**Weidmüller Interface GmbH & Co. KG**  
 Klingenbergstraße 26  
 D-32758 Detmold  
 Germany  
 Fon: +49 5231 14-0  
 Fax: +49 5231 14-292083  
 www.weidmueller.com

**Mating connector (fully pluggable)**

Type	DRI314524L	Version
Order No.	<a href="#">7760056307</a>	D-SERIES DRI, Relay, Number of contacts: 1 CO contact AgSnO,
GTIN (EAN)	6944169740121	Rated control voltage: 24 V AC, Continuous current: 10 A, Flat blade connections (4.7 mm x 0.5 mm)
Qty.	20 pc(s).	
Type	DRI314012L	Version
Order No.	<a href="#">7760056303</a>	D-SERIES DRI, Relay, Number of contacts: 1 CO contact AgSnO,
GTIN (EAN)	6944169740084	Rated control voltage: 12 V DC, Continuous current: 10 A, Flat blade connections (4.7 mm x 0.5 mm)
Qty.	20 pc(s).	
Type	DRI314730L	Version
Order No.	<a href="#">7760056309</a>	D-SERIES DRI, Relay, Number of contacts: 1 CO contact AgSnO,
GTIN (EAN)	6944169740145	Rated control voltage: 230 V AC, Continuous current: 10 A, Flat blade connections (4.7 mm x 0.5 mm)
Qty.	20 pc(s).	
Type	DRI314048L	Version
Order No.	<a href="#">7760056305</a>	D-SERIES DRI, Relay, Number of contacts: 1 CO contact AgSnO,
GTIN (EAN)	6944169740107	Rated control voltage: 48 V DC, Continuous current: 10 A, Flat blade connections (4.7 mm x 0.5 mm)
Qty.	20 pc(s).	
Type	DRI314615L	Version
Order No.	<a href="#">7760056308</a>	D-SERIES DRI, Relay, Number of contacts: 1 CO contact AgSnO,
GTIN (EAN)	6944169740138	Rated control voltage: 115 V AC, Continuous current: 10 A, Flat blade connections (4.7 mm x 0.5 mm)
Qty.	20 pc(s).	

**With LED, free-wheel diode and test button****Relay from the D-SERIES DRI**

- 1 or 2 CO contacts
- Robust industrial plug-in connections
- Optional: latching / spring return operable test button with coloured control voltage identification (AC coil: red / DC coil: blue)
- Optional: Mechanical switch position indication (for version with test button)
- Optional: Bright status LED (AC coil: red / DC coil: green)
- Optional: free-wheeling diode

**General ordering data**

Type	DRI314012LTD	Version
Order No.	<a href="#">7760056314</a>	D-SERIES DRI, Relay, Number of contacts: 1 CO contact with test button AgSnO, Rated control voltage: 12 V DC, Continuous current: 10
GTIN (EAN)	6944169740190	A, Flat blade connections (4.7 mm x 0.5 mm)
Qty.	20 pc(s).	
Type	DRI314024LTD	Version
Order No.	<a href="#">7760056315</a>	D-SERIES DRI, Relay, Number of contacts: 1 CO contact with test button AgSnO, Rated control voltage: 24 V DC, Continuous current: 10
GTIN (EAN)	6944169740206	A, Flat blade connections (4.7 mm x 0.5 mm)
Qty.	20 pc(s).	
Type	DRI314110LTD	Version
Order No.	<a href="#">7760056317</a>	D-SERIES DRI, Relay, Number of contacts: 1 CO contact with test button AgSnO, Rated control voltage: 110 V DC, Continuous current:
GTIN (EAN)	6944169740220	10 A, Flat blade connections (4.7 mm x 0.5 mm)
Qty.	20 pc(s).	
Type	DRI314048LTD	Version
Order No.	<a href="#">7760056316</a>	D-SERIES DRI, Relay, Number of contacts: 1 CO contact with test button AgSnO, Rated control voltage: 48 V DC, Continuous current: 10
GTIN (EAN)	6944169740213	A, Flat blade connections (4.7 mm x 0.5 mm)
Qty.	20 pc(s).	

**D-SERIES DRI  
SDI 1CO P**

**Weidmüller Interface GmbH & Co. KG**  
 Klingenbergstraße 26  
 D-32758 Detmold  
 Germany  
 Fon: +49 5231 14-0  
 Fax: +49 5231 14-292083  
 www.weidmueller.com

**Mating connector (fully pluggable)****Standard relay****Relay from the D-SERIES DRI**

- 1 or 2 CO contacts
- Robust industrial plug-in connections
- Optional: latching / spring return operable test button with coloured control voltage identification (AC coil: red / DC coil: blue)
- Optional: Mechanical switch position indication (for version with test button)
- Optional: Bright status LED (AC coil: red / DC coil: green)
- Optional: free-wheeling diode

**General ordering data**

Type	DRI314730	Version
Order No.	<a href="#">7760056302</a>	D-SERIES DRI, Relay, Number of contacts: 1 CO contact AgSnO,
GTIN (EAN)	6944169740077	Rated control voltage: 230 V AC, Continuous current: 10 A, Flat blade
Qty.	20 pc(s).	connections (4.7 mm x 0.5 mm)
Type	DRI314024	Version
Order No.	<a href="#">7760056297</a>	D-SERIES DRI, Relay, Number of contacts: 1 CO contact AgSnO,
GTIN (EAN)	6944169740022	Rated control voltage: 24 V DC, Continuous current: 10 A, Flat blade
Qty.	20 pc(s).	connections (4.7 mm x 0.5 mm)
Type	DRI314012	Version
Order No.	<a href="#">7760056296</a>	D-SERIES DRI, Relay, Number of contacts: 1 CO contact AgSnO,
GTIN (EAN)	6944169739774	Rated control voltage: 12 V DC, Continuous current: 10 A, Flat blade
Qty.	20 pc(s).	connections (4.7 mm x 0.5 mm)
Type	DRI314110	Version
Order No.	<a href="#">7760056299</a>	D-SERIES DRI, Relay, Number of contacts: 1 CO contact AgSnO,
GTIN (EAN)	6944169740046	Rated control voltage: 110 V DC, Continuous current: 10 A, Flat blade
Qty.	20 pc(s).	connections (4.7 mm x 0.5 mm)
Type	DRI314524	Version
Order No.	<a href="#">7760056300</a>	D-SERIES DRI, Relay, Number of contacts: 1 CO contact AgSnO,
GTIN (EAN)	6944169740053	Rated control voltage: 24 V AC, Continuous current: 10 A, Flat blade
Qty.	20 pc(s).	connections (4.7 mm x 0.5 mm)
Type	DRI314615	Version
Order No.	<a href="#">7760056301</a>	D-SERIES DRI, Relay, Number of contacts: 1 CO contact AgSnO,
GTIN (EAN)	6944169740060	Rated control voltage: 115 V AC, Continuous current: 10 A, Flat blade
Qty.	20 pc(s).	connections (4.7 mm x 0.5 mm)
Type	DRI314048	Version
Order No.	<a href="#">7760056298</a>	D-SERIES DRI, Relay, Number of contacts: 1 CO contact AgSnO,
GTIN (EAN)	6944169740039	Rated control voltage: 48 V DC, Continuous current: 10 A, Flat blade
Qty.	20 pc(s).	connections (4.7 mm x 0.5 mm)

## D-SERIES DRI SDI 1CO P

**Weidmüller Interface GmbH & Co. KG**  
 Klingenbergstraße 26  
 D-32758 Detmold  
 Germany  
 Fon: +49 5231 14-0  
 Fax: +49 5231 14-292083  
 www.weidmueller.com

### Mating connector (fully pluggable)

#### With LED and free-wheel diode



#### Relay from the D-SERIES DRI

- 1 or 2 CO contacts
- Robust industrial plug-in connections
- Optional: latching / spring return operable test button with coloured control voltage identification (AC coil: red / DC coil: blue)
- Optional: Mechanical switch position indication (for version with test button)
- Optional: Bright status LED (AC coil: red / DC coil: green)
- Optional: free-wheeling diode

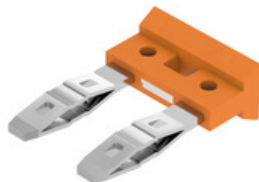
#### General ordering data

Type	DRI314024LD	Version
Order No.	<a href="#">7760056311</a>	D-SERIES DRI, Relay, Number of contacts: 1 CO contact AgSnO,
GTIN (EAN)	6944169740169	Rated control voltage: 24 V DC, Continuous current: 10 A, Flat blade
Qty.	20 pc(s).	connections (4.7 mm x 0.5 mm)
Type	DRI314110LD	Version
Order No.	<a href="#">7760056313</a>	D-SERIES DRI, Relay, Number of contacts: 1 CO contact AgSnO,
GTIN (EAN)	6944169740183	Rated control voltage: 110 V DC, Continuous current: 10 A, Flat blade
Qty.	20 pc(s).	connections (4.7 mm x 0.5 mm)
Type	DRI314048LD	Version
Order No.	<a href="#">7760056312</a>	D-SERIES DRI, Relay, Number of contacts: 1 CO contact AgSnO,
GTIN (EAN)	6944169740176	Rated control voltage: 48 V DC, Continuous current: 10 A, Flat blade
Qty.	20 pc(s).	connections (4.7 mm x 0.5 mm)
Type	DRI314012LD	Version
Order No.	<a href="#">7760056310</a>	D-SERIES DRI, Relay, Number of contacts: 1 CO contact AgSnO,
GTIN (EAN)	6944169740152	Rated control voltage: 12 V DC, Continuous current: 10 A, Flat blade
Qty.	20 pc(s).	connections (4.7 mm x 0.5 mm)



**D-SERIES DRI  
SDI 1CO P**

**Weidmüller Interface GmbH & Co. KG**  
 Klingenbergstraße 26  
 D-32758 Detmold  
 Germany  
 Fon: +49 5231 14-0  
 Fax: +49 5231 14-292083  
 www.weidmueller.com

**Accessories**
**Cross-connection for base with PUSH IN connection**


In an industrial environment, service work needs to be carried out quickly, simply and reliably. If components are replaced, bended relay contacts often cause errors which are difficult to locate.

As the handling of components in practice plays an increasingly important role, DRI relays have particularly stable plug contacts for quick and safe mounting. The test button with latching in end position can be operated tool-free. An easily visible, LED illuminated status display also allows clear determination of status.

Both during installation of the cabinet and during subsequent servicing in the machinery and plant engineering sector, DRI relays are the optimum coupling element for confined installation conditions.

**General ordering data**

Type	SCM/SDI P CC	Version
Order No.	<a href="#">7760056366</a>	D-SERIES, Cross-connector
GTIN (EAN)	6944169773327	
Qty.	10 pc(s).	

**Retaining clip**


Accessories for D-SERIES relays include:

- Relay bases
- LED / Protective modules
- Metal retaining clips

**General ordering data**

Type	SDI CLIP HM	Version
Order No.	<a href="#">7760056390</a>	D-SERIES DRI, Retaining clip
GTIN (EAN)	6944169787898	
Qty.	10 pc(s).	
Type	SDI CLIP P	Version
Order No.	<a href="#">7760056389</a>	D-SERIES DRI, Retaining clip
GTIN (EAN)	6944169787539	
Qty.	10 pc(s).	
Type	SDI CLIP LM	Version
Order No.	<a href="#">7760056368</a>	D-SERIES DRI, Retaining clip
GTIN (EAN)	6944169773341	
Qty.	10 pc(s).	
Type	SDI CLIP	Version
Order No.	<a href="#">7760056352</a>	D-SERIES DRI, Retaining clip
GTIN (EAN)	6944169739996	
Qty.	10 pc(s).	

**Data sheet**

**D-SERIES DRI  
SDI 1CO P**

**Weidmüller Interface GmbH & Co. KG**  
 Klingenbergstraße 26  
 D-32758 Detmold  
 Germany  
 Fon: +49 5231 14-0  
 Fax: +49 5231 14-292083  
 www.weidmueller.com

**Accessories**

**Slotted screwdriver**

Slotted screwdriver with rounded blade SD DIN 5265, ISO 2380/2, output to DIN 5264, ISO 2380/1. ChromTop tip, SoftFinish grip



**General ordering data**

Type	SDS 0.4X2.5X75	Version
Order No.	<a href="#">9009030000</a>	Screwdriver, Blade width (B): 2.5 mm, Blade length: 75 mm, Blade thickness (A): 0.4 mm
GTIN (EAN)	4032248266944	
Qty.	1 pc(s).	

**Protection modules**



Accessories for D-SERIES relays include:

- Relay bases
- LED / Protective modules
- Metal retaining clips

**General ordering data**

Type	RIM 1 6/230VDC	Version
Order No.	<a href="#">7760056169</a>	D-SERIES, Free-wheeling diode, Rated control voltage: 6...230 V, Plug-in connection
GTIN (EAN)	4032248967728	
Qty.	10 pc(s).	
Type	RIM 3 110/230VAC	Version
Order No.	<a href="#">7760056014</a>	D-SERIES, RC filter, Rated control voltage: 110...230 V AC, Plug-in connection
GTIN (EAN)	4032248878109	
Qty.	10 pc(s).	

## D-SERIES DRI SDI 1CO P

**Weidmüller Interface GmbH & Co. KG**  
 Klingenbergstraße 26  
 D-32758 Detmold  
 Germany  
 Fon: +49 5231 14-0  
 Fax: +49 5231 14-292083  
 www.weidmueller.com

# Accessories

### Slotted screwdriver

VDE insulated slot-head screwdriver, SDI DIN 7437, ISO 2380/2, drive output acc. to DIN 5264, ISO 2380/1. SoftFinish grip



### General ordering data

Type	SDIS 0.4X2.5X75	Version
Order No.	<a href="#">9008370000</a>	Screwdriver, Blade width (B): 2.5 mm, Blade length: 75 mm, Blade thickness (A): 0.4 mm
GTIN (EAN)	4032248056330	
Qty.	1 pc(s).	

### LED / free-wheel diode

Accessories for D-SERIES relays include:

- Relay bases
- LED / Protective modules
- Metal retaining clips



### General ordering data

Type	RIM 2 24/60VDC	Version
Order No.	<a href="#">7760056016</a>	D-SERIES, LED module with freewheel diode, Rated control voltage: 24...60 V DC, Plug-in connection
GTIN (EAN)	4032248878123	
Qty.	10 pc(s).	
Type	RIM 2 110/230VDC	Version
Order No.	<a href="#">7760056017</a>	D-SERIES, LED module with freewheel diode, Rated control voltage: 110...230 V DC, Plug-in connection
GTIN (EAN)	4032248896615	
Qty.	10 pc(s).	
Type	RIM 2 6/24VDC	Version
Order No.	<a href="#">7760056015</a>	D-SERIES, LED module with freewheel diode, Rated control voltage: 6...24 V DC, Plug-in connection
GTIN (EAN)	4032248878116	
Qty.	10 pc(s).	

## D-SERIES DRI SDI 1CO P

**Weidmüller Interface GmbH & Co. KG**  
 Klingenbergstraße 26  
 D-32758 Detmold  
 Germany  
 Fon: +49 5231 14-0  
 Fax: +49 5231 14-292083  
 www.weidmueller.com

# Accessories

## LED



Accessories for D-SERIES relays include:

- Relay bases
- LED / Protective modules
- Metal retaining clips

### General ordering data

Type	RIM 3 24/60VUC	Version
Order No.	<a href="#">7760056018</a>	D-SERIES, LED module, Rated control voltage: 24...60 V UC, Plug-in connection
GTIN (EAN)	4032248878130	
Qty.	10 pc(s).	
Type	RIM 3 110/230VUC	Version
Order No.	<a href="#">7940018455</a>	D-SERIES, LED module, Rated control voltage: 110...230 V UC, Plug-in connection
GTIN (EAN)	4032248878185	
Qty.	20 pc(s).	
Type	RIM 3 6/24VUC	Version
Order No.	<a href="#">7940018457</a>	D-SERIES, LED module, Rated control voltage: 6...24 V UC, Plug-in connection
GTIN (EAN)	4032248878192	
Qty.	20 pc(s).	

## MultiCard



The Weidmüller device markers enable users to conform to obligatory equipment labelling regulations. Users can label the device markers themselves by means of suitable software and system-compatible printer systems.

ESG is the tried-and-tested marker in MultiCard format. The result is high-quality device marking with a high-contrast appearance.

ESG 6/15 SDI MC... for marking D-SERIES DRI relay sockets:

- Attachable MultiCard markers
- Depending on the relay socket it is attachable on up to 4 levels
- Additional option for attaching the marker on plastic retaining clip: SDI CLIP P
- PrintJet printable

### General ordering data

Type	ESG 6/15 SDI MC SDR	Version
Order No.	<a href="#">2558310000</a>	ESG, Device markers x 15 mm, PA 66. Colour: To customer specification
GTIN (EAN)	4050118569025	
Qty.	40 pc(s).	

**Data sheet****D-SERIES DRI  
SDI 1CO P**

**Weidmüller Interface GmbH & Co. KG**  
Klingenbergstraße 26  
D-32758 Detmold  
Germany  
Fon: +49 5231 14-0  
Fax: +49 5231 14-292083  
www.weidmueller.com

**Accessories**

Type	ESG 6/15 SDI MC NE WS	Version
Order No.	<a href="#">2558340000</a>	ESG, Device markers x 15 mm, PA 66, Colour: white
GTIN (EAN)	4050118569056	
Qty.	200 pc(s).	