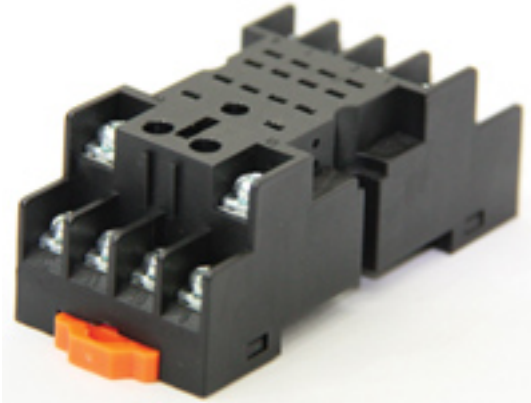


**D-SERIES  
FS 4CO RL**

**Weidmüller Interface GmbH & Co. KG**  
Klingenbergstraße 26  
D-32758 Detmold  
Germany  
Fon: +49 5231 14-0  
Fax: +49 5231 14-292083  
www.weidmueller.com

**Product image**

Accessories for D-SERIES relays include:

- Relay bases
- LED / Protective modules
- Metal retaining clips

**General ordering data**

Local product	Only available in certain countries
Type	FS 4CO RL
Order No.	<a href="#">7760056130</a>
Version	D-SERIES, Relay bases, Number of contacts: 4, CO contact, Screw connection
GTIN (EAN)	4032248855520
Qty.	10 pc(s).

Creation date May 1, 2020 2:32:16 PM CEST

Catalogue status 17.04.2020 / We reserve the right to make technical changes.

**Data sheet**

**D-SERIES  
FS 4CO RL**

**Weidmüller Interface GmbH & Co. KG**  
 Klingenbergstraße 26  
 D-32758 Detmold  
 Germany  
 Fon: +49 5231 14-0  
 Fax: +49 5231 14-292083  
 www.weidmueller.com

**Technical data**

**General ordering data**

Local product Only available in certain countries

**Dimensions and weights**

Width	30.6 mm	Width (inches)	1.205 inch
Height	69.7 mm	Height (inches)	2.744 inch
Depth	25.5 mm	Depth (inches)	1.004 inch
Net weight	45.9 g		

**Rated data UL**

Certificate No. (cURus) E312083

**General data**

Rail TS 35

**Insulation coordination**

Protection degree IP10

**Further details of approvals / standards**

Standards	EN 60664-1:2007, EN 61000-6-2:2005, EN 61000-6-4:2007 + A1:2011, UL 508	Certificate No. (cURus)	E312083
-----------	--	-------------------------	---------

**Connection data**

Wire connection method	Screw connection	Wire connection	M3 ring cable lug (insulated)
------------------------	------------------	-----------------	-------------------------------

**Classifications**

ETIM 6.0	EC001456	ETIM 7.0	EC001456
eClass 9.0	27-37-16-03	eClass 9.1	27-37-16-03
eClass 10.0	27-37-16-03		

**Approvals**

Approvals



ROHS Conform

**Downloads**

Approval/Certificate/Document of Conformity [EU Konformitätserklärung / EU Declaration of Conformity](#)

## D-SERIES FS 4CO RL

**Weidmüller Interface GmbH & Co. KG**  
 Klingenbergstraße 26  
 D-32758 Detmold  
 Germany  
 Fon: +49 5231 14-0  
 Fax: +49 5231 14-292083  
 www.weidmueller.com

### Mating connector (fully pluggable)

#### with LED and free-wheel diode



Relay from the D-SERIES DRE.

- 2 or 4 CO contacts
- Compact design
- Wide range of coil voltages
- Integrated with test button (AC red, DC blue)
- Integrated with status display (AC red, DC green) and/or free-wheel diode

#### General ordering data

Type	DRE570024LD	Version
Order No.	<a href="#">7760054289</a>	D-SERIES DRE, Relay, Number of contacts: 4, CO contact, Ag alloy,
GTIN (EAN)	6944169719974	Rated control voltage: 24 V DC, Continuous current: 3 A, Plug-in
Qty.	20 pc(s).	connection

#### with LED



Relay from the D-SERIES DRE.

- 2 or 4 CO contacts
- Compact design
- Wide range of coil voltages
- Integrated with test button (AC red, DC blue)
- Integrated with status display (AC red, DC green) and/or free-wheel diode

#### General ordering data

Type	DRE570110L	Version
Order No.	<a href="#">7760054284</a>	D-SERIES DRE, Relay, Number of contacts: 4, CO contact, Ag alloy,
GTIN (EAN)	6944169719929	Rated control voltage: 110 V DC, Continuous current: 3 A, Plug-in
Qty.	20 pc(s).	connection
Type	DRE570048L	Version
Order No.	<a href="#">7760054283</a>	D-SERIES DRE, Relay, Number of contacts: 4, CO contact, Ag alloy,
GTIN (EAN)	6944169719912	Rated control voltage: 48 V DC, Continuous current: 3 A, Plug-in
Qty.	20 pc(s).	connection
Type	DRE570524L	Version
Order No.	<a href="#">7760054285</a>	D-SERIES DRE, Relay, Number of contacts: 4, CO contact, Ag alloy,
GTIN (EAN)	6944169719936	Rated control voltage: 24 V AC, Continuous current: 3 A, Plug-in
Qty.	20 pc(s).	connection
Type	DRE570024L	Version
Order No.	<a href="#">7760054282</a>	D-SERIES DRE, Relay, Number of contacts: 4, CO contact, Ag alloy,
GTIN (EAN)	6944169719905	Rated control voltage: 24 V DC, Continuous current: 3 A, Plug-in
Qty.	20 pc(s).	connection
Type	DRE570730L	Version
Order No.	<a href="#">7760054288</a>	D-SERIES DRE, Relay, Number of contacts: 4, CO contact, Ag alloy,
GTIN (EAN)	6944169719967	Rated control voltage: 230 V AC, Continuous current: 3 A, Plug-in
Qty.	20 pc(s).	connection

**D-SERIES  
FS 4CO RL**

**Weidmüller Interface GmbH & Co. KG**  
 Klingenbergstraße 26  
 D-32758 Detmold  
 Germany  
 Fon: +49 5231 14-0  
 Fax: +49 5231 14-292083  
 www.weidmueller.com

**Mating connector (fully pluggable)**

Type	DRE570548L	Version
Order No.	<a href="#">7760054286</a>	D-SERIES DRE, Relay, Number of contacts: 4, CO contact, Ag alloy,
GTIN (EAN)	6944169719943	Rated control voltage: 48 V AC, Continuous current: 3 A, Plug-in
Qty.	20 pc(s).	connection
Type	DRE570012L	Version
Order No.	<a href="#">7760054281</a>	D-SERIES DRE, Relay, Number of contacts: 4, CO contact, Ag alloy,
GTIN (EAN)	6944169719899	Rated control voltage: 12 V DC, Continuous current: 3 A, Plug-in
Qty.	20 pc(s).	connection
Type	DRE570615L	Version
Order No.	<a href="#">7760054287</a>	D-SERIES DRE, Relay, Number of contacts: 4, CO contact, Ag alloy,
GTIN (EAN)	6944169719950	Rated control voltage: 115 V AC, Continuous current: 3 A, Plug-in
Qty.	20 pc(s).	connection