

TERMSERIES

SSS RELAIS 24V/24V 0,1ADC

Weidmüller Interface GmbH & Co. KG
 Klingenbergstraße 26
 D-32758 Detmold
 Germany
 Fon: +49 5231 14-0
 Fax: +49 5231 14-292083
 www.weidmueller.com



Similar to illustration

TERMSERIES accessories include:

- Spare relay
- Base
- Partition plates
- Cross-connections
- Power-feed modules

General ordering data

Type	SSS RELAIS 24V/24V 0,1ADC
Order No.	4061180000
Version	TERMSERIES, solid-state relays, 1 NO contact (Bipolar transistor), Rated control voltage: 18 V DC...24 V DC...30 V DC, Rated switching voltage: 0...48 V DC, Continuous current: 100 mA, Plug-in connection
GTIN (EAN)	4032248415076
Qty.	20 pc(s).

Creation date May 1, 2020 3:20:00 PM CEST

TERMSERIES
SSS RELAIS 24V/24V 0,1ADC

Weidmüller Interface GmbH & Co. KG
 Klingenbergstraße 26
 D-32758 Detmold
 Germany
 Fon: +49 5231 14-0
 Fax: +49 5231 14-292083
 www.weidmueller.com

Technical data**Dimensions and weights**

Width	5 mm	Width (inches)	0.197 inch
Height	28 mm	Height (inches)	1.102 inch
Depth	15 mm	Depth (inches)	0.591 inch
Net weight	3.53 g		

Temperatures

Humidity	40 °C / 93 % rel. humidity, no condensation	Operating temperature, max.	60 °C
Operating temperature, min.	-20 °C	Storage temperature, max.	70 °C
Storage temperature, min.	-40 °C	Operating temperature	-20 °C...60 °C
Storage temperature	-40 °C...70 °C		

Probability of failure

MTTF	4,298 Years
------	-------------

Control side

Rated control voltage	18 V DC...24 V DC...30 V DC	Nominal control current	7 mA DC (±10 %)
Power rating	170 mW	Status indicator	No

Load side

Rated switching voltage	0...48 V DC	Continuous current	100 mA
Switch-on delay	< 35 µs	Switch-off delay	< 355 µs
Voltage drop at max. load	≤ 1 V	Leakage current	< 10 µA
Min. switching current	500 µA	Short-circuit-proof	No
Protective circuit, load side	Free-wheeling diode		

Contact data

Contact type	1 NO contact (Bipolar transistor)
--------------	-----------------------------------

General data

Colour	black
--------	-------

Insulation coordination

Clearance and creepage distances for control side - load side	≥ 5.5 mm	Dielectric strength for control side - load side	2.5 kV _{eff}
---	----------	--	-----------------------

Connection data

Wire connection method	Plug-in connection
------------------------	--------------------

Classifications

ETIM 6.0	EC001504	ETIM 7.0	EC001504
eClass 9.0	27-37-16-04	eClass 9.1	27-37-16-04
eClass 10.0	27-37-16-04	UNSPSC	30-21-18-01

Data sheet**TERMSERIES
SSS RELAIS 24V/24V 0,1ADC**

Weidmüller Interface GmbH & Co. KG
Klingenbergstraße 26
D-32758 Detmold
Germany
Fon: +49 5231 14-0
Fax: +49 5231 14-292083
www.weidmueller.com

Technical data**Approvals**

Approvals

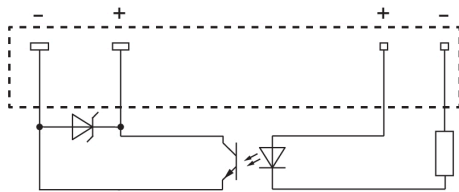


ROHS

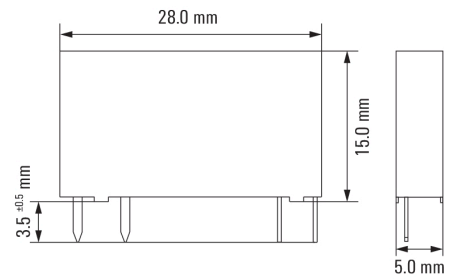
Conform

Downloads

Brochure/Catalogue	CAT 4.2 ELECTR 18/19 EN
Engineering Data	WSCAD
Engineering Data	STEP

TERMSERIES
SSS RELAIS 24V/24V 0,1ADC**Weidmüller Interface GmbH & Co. KG**
Klingenbergstraße 26
D-32758 Detmold
Germany
Fon: +49 5231 14-0
Fax: +49 5231 14-292083
www.weidmueller.com**Drawings****Wiring diagram**

View of pins from below

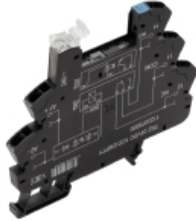
Dimensional drawing

TERMSERIES SSS RELAIS 24V/24V 0,1ADC

Weidmüller Interface GmbH & Co. KG
 Klingenbergstraße 26
 D-32758 Detmold
 Germany
 Fon: +49 5231 14-0
 Fax: +49 5231 14-292083
 www.weidmueller.com

Mating connector (fully pluggable)

PUSH IN connection



TERMSERIES accessories include:

- Spare relay
- Base
- Partition plates
- Cross-connections
- Power-feed modules

General ordering data

Type	TRP 24VUC 1CO EMPTY	Version
Order No.	2618910000	TERMSERIES, Relay bases, Number of contacts: 1 CO contact, Rated control voltage: 24 V UC $\pm 10\%$, Continuous current: 10 A, PUSH IN with actuator
GTIN (EAN)	4050118669923	
Qty.	10 pc(s).	
Type	TRP 48VUC 1CO EMPTY	Version
Order No.	2618920000	TERMSERIES, Relay bases, Number of contacts: 1 CO contact, Rated control voltage: 48 V UC $\pm 10\%$, Continuous current: 10 A, PUSH IN with actuator
GTIN (EAN)	4050118669916	
Qty.	10 pc(s).	
Type	TRP 24VDC 1CO EMPTY	Version
Order No.	2618870000	TERMSERIES, Relay bases, Number of contacts: 1 CO contact, Rated control voltage: 24 V DC $\pm 20\%$, Continuous current: 10 A, PUSH IN with actuator
GTIN (EAN)	4050118669961	
Qty.	10 pc(s).	

Tension clamp connection



TERMSERIES accessories include:

- Spare relay
- Base
- Partition plates
- Cross-connections
- Power-feed modules

General ordering data

Type	TRZ 24-230VUC 1CO EMPTY	Version
Order No.	1123450000	TERMSERIES, Relay bases, Number of contacts: 1 CO contact, Rated control voltage: 24...230 V UC $\pm 10\%$, Continuous current: 10 A, Tension-clamp connection
GTIN (EAN)	4032248905508	
Qty.	10 pc(s).	
Type	TRZ 24VDC 1CO EMPTY	Version
Order No.	1123370000	TERMSERIES, Relay bases, Number of contacts: 1 CO contact, Rated control voltage: 24 V DC $\pm 20\%$, Continuous current: 10 A, Tension-clamp connection
GTIN (EAN)	4032248905324	
Qty.	10 pc(s).	
Type	TRZ 24VUC 1CO EMPTY	Version
Order No.	1123380000	TERMSERIES, Relay bases, Number of contacts: 1 CO contact, Rated control voltage: 24 V UC $\pm 10\%$, Continuous current: 10 A, Tension-clamp connection
GTIN (EAN)	4032248905195	
Qty.	10 pc(s).	

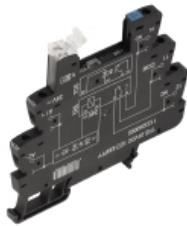
TERMSERIES SSS RELAIS 24V/24V 0,1ADC

Weidmüller Interface GmbH & Co. KG
 Klingenbergstraße 26
 D-32758 Detmold
 Germany
 Fon: +49 5231 14-0
 Fax: +49 5231 14-292083
 www.weidmueller.com

Mating connector (fully pluggable)

Type	TRZ 48VUC 1CO EMPTY	Version
Order No.	1123390000	TERMSERIES, Relay bases, Number of contacts: 1 CO contact, Rated
GTIN (EAN)	4032248905331	control voltage: 48 V UC $\pm 10\%$, Continuous current: 10 A, Tension-clamp connection
Qty.	10 pc(s).	

Screw connection



TERMSERIES accessories include:

- Spare relay
- Base
- Partition plates
- Cross-connections
- Power-feed modules

General ordering data

Type	TRS 24VUC 1CO EMPTY	Version
Order No.	1123250000	TERMSERIES, Relay bases, Number of contacts: 1 CO contact, Rated
GTIN (EAN)	4032248905713	control voltage: 24 V UC $\pm 10\%$, Continuous current: 10 A, Screw connection
Qty.	10 pc(s).	
Type	TRS 48VUC 1CO EMPTY	Version
Order No.	1123270000	TERMSERIES, Relay bases, Number of contacts: 1 CO contact, Rated
GTIN (EAN)	4032248905423	control voltage: 48 V UC $\pm 10\%$, Continuous current: 10 A, Screw connection
Qty.	10 pc(s).	
Type	TRS 24VDC 1CO EMPTY	Version
Order No.	1123240000	TERMSERIES, Relay bases, Number of contacts: 1 CO contact, Rated
GTIN (EAN)	4032248905485	control voltage: 24 V DC $\pm 20\%$, Continuous current: 10 A, Screw connection
Qty.	10 pc(s).	
Type	TRS 24-230VUC 1CO EMPTY	Version
Order No.	1123330000	TERMSERIES, Relay bases, Number of contacts: 1 CO contact, Rated
GTIN (EAN)	4032248905614	control voltage: 24...230 V UC $\pm 10\%$, Continuous current: 10 A, Screw connection
Qty.	10 pc(s).	