

HDC MBUS CF 11.0**Weidmüller Interface GmbH & Co. KG**

Klingenbergstraße 26

D-32758 Detmold

Germany

Fon: +49 5231 14-0

Fax: +49 5231 14-292083

www.weidmueller.com

**Compact**

The new two-pole bus module is extremely compact and can accommodate both megabit and gigabit data inserts. It enables the connection of 2 Gigabit Cat 6A cables (10 gigabit) to one module.

General ordering data

Type	HDC MBUS CF 11.0
Order No.	2566000000
Version	
GTIN (EAN)	4050118575712
Qty.	10 pc(s).

HDC MBUS CF 11.0

Weidmüller Interface GmbH & Co. KG
 Klingenbergstraße 26
 D-32758 Detmold
 Germany
 Fon: +49 5231 14-0
 Fax: +49 5231 14-292083
 www.weidmueller.com

Technical data

Dimensions and weights

Net weight 0.001 g

Classifications

ETIM 6.0	EC002312	ETIM 7.0	EC002312
eClass 9.0	27-44-02-92	eClass 9.1	27-44-02-18
eClass 10.0	27-44-02-92		

Approvals

ROHS Conform

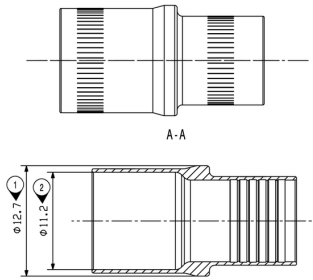
Downloads

Engineering Data	EPLAN
Engineering Data	STEP

HDC MBUS CF 11.0

Weidmüller Interface GmbH & Co. KG
Klingenbergstraße 26
D-32758 Detmold
Germany
Fon: +49 5231 14-0
Fax: +49 5231 14-292083
www.weidmueller.com

Drawings



HDC MBUS CF 11.0

Weidmüller Interface GmbH & Co. KG
 Klingenbergstraße 26
 D-32758 Detmold
 Germany
 Fon: +49 5231 14-0
 Fax: +49 5231 14-292083
 www.weidmueller.com

Accessories

Tools

**Compact**

The new two-pole bus module is extremely compact and can accommodate both megabit and gigabit data inserts. It enables the connection of 2 Gigabit Cat 6A cables (10 gigabit) to one module.

General ordering data

Type	HDC MBUS CI A 9.2-10.3	Version
Order No.	2592700000	Crimping tool insert
GTIN (EAN)	4050118603903	
Qty.	1 pc(s).	
Type	HDC MBUS CI B 8.0-9.1	Version
Order No.	2592720000	Crimping tool insert
GTIN (EAN)	4050118603927	
Qty.	1 pc(s).	
Type	HDC MBUS CT C 6.8-7.9	Version
Order No.	2592730000	Pressing tool
GTIN (EAN)	4050118603934	
Qty.	1 pc(s).	
Type	HDC MBUS CT A 9.2-10.3	Version
Order No.	2592690000	Pressing tool
GTIN (EAN)	4050118603798	
Qty.	1 pc(s).	
Type	HDC MBUS CI C 6.8-7.9	Version
Order No.	2592740000	Crimping tool insert
GTIN (EAN)	4050118603941	
Qty.	1 pc(s).	
Type	HDC MBUS CT B 8.0-9.1	Version
Order No.	2592710000	Pressing tool
GTIN (EAN)	4050118603910	
Qty.	1 pc(s).	