

## ENERGY ANALYSER 750-230

**Weidmüller Interface GmbH & Co. KG**  
 Klingenbergstraße 26  
 D-32758 Detmold  
 Germany  
 Fon: +49 5231 14-0  
 Fax: +49 5231 14-292083  
 www.weidmueller.com



Increasingly non-linear loads and system components are entering production facilities. They influence the mains frequency, phase shift and the amplitudes of the phases. This has an influence on the quality of the electrical energy and therefore on system availability. Energy analysers, such as the Energy Analyser, measure all quality parameters of the electrical supply network: from the symmetry parameters through to the transients - and many more parameters besides. With the Energy Analyser you comprehensively test the quality of the electrical energy in your production facility and introduce optimisation steps to maximise the effectiveness and availability of your system.

### General ordering data

Type	ENERGY ANALYSER 750-230
Order No.	<a href="#">2534130000</a>
GTIN (EAN)	4050118545722
Qty.	1 pc(s).

**ENERGY ANALYSER 750-230****Weidmüller Interface GmbH & Co. KG**

Klingenbergstraße 26

D-32758 Detmold

Germany

Fon: +49 5231 14-0

Fax: +49 5231 14-292083

www.weidmueller.com

**Technical data****Dimensions and weights**

Width	144 mm	Width (inches)	5.669 inch
Height	144 mm	Height (inches)	5.669 inch
Depth	81 mm	Depth (inches)	3.189 inch
Net weight	1,080 g		

**Temperatures**

Humidity at operating temperature	5...95 % RH	Operating temperature, max.	55 °C
Operating temperature, min.	-10 °C	Storage temperature, max.	70 °C
Storage temperature, min.	-25 °C	Operating temperature	-10 °C...55 °C
Storage temperature	-25 °C...70 °C		

**Environmental Product Compliance**

REACH SVHC	Lead 7439-92-1
------------	----------------

**Measuring current input**

Current-measuring channels	4 + 2	Distortion factor THD-I in %	Yes
Harmonics, per order / current	1..63.	Measuring accuracy for current	0.1 %
Rated current	1 / 5 A	Residual current measuring	Yes

**Measuring voltage input**

Distortion factor THD-U in %	Yes	Four-wire system	Yes
Harmonics, per order / voltage	1..63.	Measurement range, voltage L-L, AC	600 V
Measurement range, voltage L-N, AC	347 V	Measuring accuracy for voltage	0.1 %
Quadrants	4	Three-wire system	Yes

**Communication**

Interface	Protocol	Modbus RTU, Modbus-Gateway, Modbus TCP/IP, Modbus RTU over Ethernet, SNMP, Profibus DP V0, BACnet (optional)
	RS485: 9.6 – 921.6 kbps, Ethernet, Profibus DP, Web server/e-mail	

**Inputs/outputs**

Number of digital inputs	2	Number of digital outputs	2
Number of pulse outputs	2	Temperature input	Yes

**Measurement data recording**

Memory; minimum and maximum values	Yes	Memory size	256 MB
Number of memory values	10,000 k	Update interval register	200 ms
Min. memory recording interval	1 s	Software	ecoExplorer go®
Integrated logic	Yes		

**ENERGY ANALYSER 750-230****Weidmüller Interface GmbH & Co. KG**

Klingenbergstraße 26

D-32758 Detmold

Germany

Fon: +49 5231 14-0

Fax: +49 5231 14-292083

www.weidmueller.com

**Technical data****Technical data**

Standards	DIN EN 61326-1, DIN EN 61000-4-2, DIN EN 61000-4-3, DIN EN 61000-4-4, DIN EN 61000-4-5, DIN EN 61000-4-6, DIN EN 61000-4-8, EN 61000-4-11, EN 55011, IEC 61010-1, IEC 61010-2-030	Measurement range, voltage L-N, AC	347 V
Measurement range, voltage L-L, AC	600 V	Input frequency	< 20 Hz
Surge voltage category	600 V CAT III	Voltage supply	95 - 240 V AC, 80 - 300 V DC
Three-wire system	Yes	Four-wire system	Yes
Quadrants	4	Sampling frequency 50/60 Hz	25.6 kHz
Continuous measurements	Yes	Effective value from the period (50/60 Hz)	10 / 12
Measurement result per second	5	Residual current measuring	Yes
Measuring accuracy for voltage	0.1 %	Measuring accuracy for current	0.1 %
Measurement accuracy for active energy (kWh, .../5 A)	Class 0.2S	Operating-hours counter	Yes
Weekly time switch	Yes	Current-measuring channels	4 + 2
Clock	Yes	Bimetal function	Yes

**Voltage quality measurement**

Harmonics, per order / voltage	1-63.	Harmonics, per order / current	1-63.
Distortion factor THD-U in %	Yes	Distortion factor THD-I in %	Yes
Unbalanced	Yes	Positive, negative and zero system	Yes
Current flicker intensity	Yes	Short/long time flicker	Yes
Brief interruptions	Yes	Sequence-of-events recorder function	Yes

**Insulation coordination**

Surge voltage category	600 V CAT III
------------------------	---------------

**Classifications**

ETIM 6.0	EC002301	ETIM 7.0	EC002301
eClass 9.0	27-14-23-30	eClass 9.1	27-21-03-01
eClass 10.0	27-14-23-30	UNSPSC	39-12-15-35

**Approvals**

Approvals



ROHS

Conform

**ENERGY ANALYSER 750-230**

**Weidmüller Interface GmbH & Co. KG**  
Klingenbergstraße 26  
D-32758 Detmold  
Germany  
Fon: +49 5231 14-0  
Fax: +49 5231 14-292083  
www.weidmueller.com

**Technical data****Downloads**

---

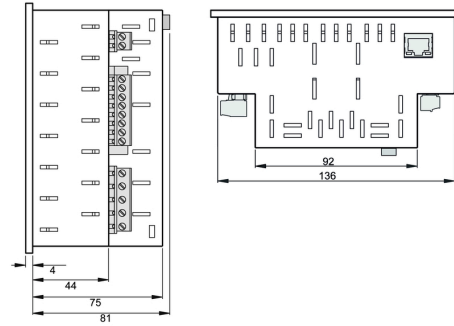
Approval/Certificate/Document of Conformity	<a href="#">EU-Declaration of Conformity</a> <a href="#">Certificate class A</a>
Software	<a href="#">MODBUS address list</a> <a href="#">GSD DATA</a> <a href="#">FIRMWARE r4075 build329</a>
User Documentation	<a href="#">Quick Guide German/English</a> <a href="#">Manual Energy Analyser 750 German/Englisch</a> <a href="#">Manual ECOEXPLORER GO English</a>

---

**ENERGY ANALYSER 750-230**

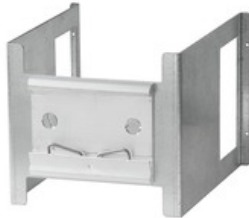
**Weidmüller Interface GmbH & Co. KG**  
 Klingenbergstraße 26  
 D-32758 Detmold  
 Germany  
 Fon: +49 5231 14-0  
 Fax: +49 5231 14-292083  
 www.weidmueller.com

**Drawings**



**ENERGY ANALYSER 750-230**

**Weidmüller Interface GmbH & Co. KG**  
Klingenbergstraße 26  
D-32758 Detmold  
Germany  
Fon: +49 5231 14-0  
Fax: +49 5231 14-292083  
www.weidmueller.com

**Accessories****Accessories**

For our energy meters, we offer accessories to mount meters, which originally have been designed to be put into front doors, onto DIN rails for example. Similarly, if you lose a mounting clip, you can easily reorder it.

**General ordering data**

Type	ENERGY METER BRACKET B1
Order No.	<a href="#">2433040000</a>
GTIN (EAN)	4050118446364
Qty.	1 pc(s).

Type	ENERGY METER SEAL L144
Order No.	<a href="#">2495630000</a>
GTIN (EAN)	4050118505870
Qty.	1 pc(s).