

FP ESWB TERMINAL SET**Weidmüller Interface GmbH & Co. KG**

Klingenbergstraße 26

D-32758 Detmold

Germany

Fon: +49 5231 14-0

Fax: +49 5231 14-292083

www.weidmueller.com



The combination of FieldPower® Elevator and Dätwyler flat cable allows to integrate different functionalities per hoistway landing into one solution: safety chain, bus communication and power distribution. No special tool is required for a quick and easy installation.

General ordering data

Type	FP ESWB TERMINAL SET
Order No.	2524850000
Version	Wiring box for elevator shaft
GTIN (EAN)	4050118536430
Qty.	1 pc(s).
Packaging	Box

Creation date May 2, 2020 7:55:11 AM CEST

Catalogue status 17.04.2020 / We reserve the right to make technical changes.

FP ESWB TERMINAL SET

Weidmüller Interface GmbH & Co. KG

Klingenbergstraße 26

D-32758 Detmold

Germany

Fon: +49 5231 14-0

Fax: +49 5231 14-292083

www.weidmueller.com

Technical data

Dimensions and weights

Width	96 mm	Width (inches)	3.78 inch
Height	122 mm	Height (inches)	4.803 inch
Depth	64.5 mm	Depth (inches)	2.539 inch
Weight	262 g	Net weight	261.28 g

Temperatures

Operating temperature, max.	50 °C	Operating temperature, min.	-5 °C
Storage temperature, max.	50 °C	Storage temperature, min.	-5 °C
Operating temperature	-5 °C...50 °C	Storage temperature	-5 °C...50 °C
Temperature range, installation, min.	10 °C	Temperature range, installation, max.	50 °C

Environmental Product Compliance

REACH SVHC	Potassium perfluorobutane sulfonate 29420-49-3
------------	--

Connectable conductors (PUSH IN)

Clamping range, max.	1.5 mm ²	Clamping range, min.	0.75 mm ²
Flexible, max. H05(07) V-K	1.5 mm ²	Flexible, min. H05(07) V-K	0.75 mm ²
Solid, max. H05(07) V-U	1.5 mm ²	Solid, min. H05(07) V-U	0.75 mm ²
Stripping length	12 mm	w. plastic collar ferrule, DIN 46228 pt 4, max.	1.5 mm ²
w. plastic collar ferrule, DIN 46228 pt 4, min.	0.75 mm ²	w. wire end ferrule, DIN 46228 pt 1, max.	1.5 mm ²
w. wire end ferrule, DIN 46228 pt 1, min.	0.75 mm ²		

Further technical data

Installation location	Hoistway wall	Snap-on	No
Type of fixing	Screwed on wall		

Material data

Colour	black, orange	Halogen	No
Housing main material	Fiberglass-reinforced polyamide	Material of eccentric disc	Zinc
Protection degree	IP20	Silicone	No
UL 94 flammability rating	V-0		

Rated data

Rated current	6 A	Rated impulse withstand voltage	4 kV
Rated voltage	230 V	Standards	EN 81-20

Classifications

ETIM 6.0	EC000214	ETIM 7.0	EC000214
eClass 9.0	27-14-24-09	eClass 9.1	27-14-24-09
eClass 10.0	27-14-24-09		

FP ESWB TERMINAL SET

Weidmüller Interface GmbH & Co. KG
Klingenbergstraße 26
D-32758 Detmold
Germany
Fon: +49 5231 14-0
Fax: +49 5231 14-292083
www.weidmueller.com

Technical data

Product information

Product information The elevator shaft wiring box is currently only approved with the flat cable type 6G1.5+1x0.75mm²+4Filler (P/N 297 144) and 9G1.5+2xFiller (P/N 297 145) from manufacturer Dätwyler Cabling Solutions. Further versions on request.

Approvals

ROHS Conform

Downloads

User Documentation [Installation Instructions FieldPower® Elevator Shaft Wiring Box](#)

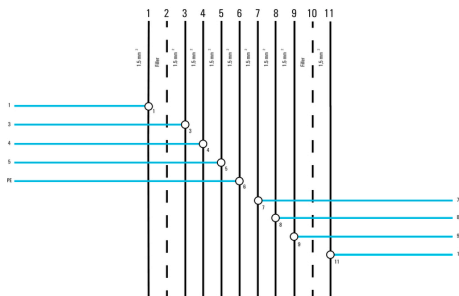
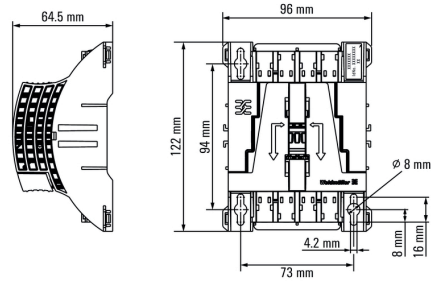
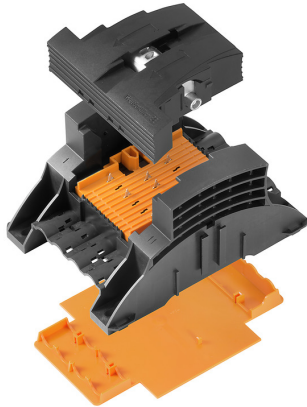
Safety note

Safety notice [Safety Information](#)

FP ESWB TERMINAL SET

Weidmüller Interface GmbH & Co. KG
 Klingenbergstraße 26
 D-32758 Detmold
 Germany
 Fon: +49 5231 14-0
 Fax: +49 5231 14-292083
 www.weidmueller.com

Drawings



FP ESWB TERMINAL SET

Weidmüller Interface GmbH & Co. KG
 Klingenbergstraße 26
 D-32758 Detmold
 Germany
 Fon: +49 5231 14-0
 Fax: +49 5231 14-292083
 www.weidmueller.com

Accessories

Slotted screwdriver

Slotted screwdriver with rounded blade SD DIN 5265, ISO 2380/2, output to DIN 5264, ISO 2380/1. ChromTop tip, SoftFinish grip



General ordering data

Type	SDS 1.2X6.5X150	Version
Order No.	9009010000	Screwdriver, Blade width (B): 6.5 mm, Blade length: 150 mm, Blade thickness (A): 1.2 mm
GTIN (EAN)	4032248266869	
Qty.	1 pc(s).	

VDE-insulated diagonal-cutting pliers



When working with live voltages, you must follow special guidelines and use special tools - tools which have been specially produced and tested for this purpose. Weidmüller offers a complete line of pliers which comply with national and international testing standards. All pliers are produced and tested according to DIN EN 60900. The pliers are ergonomically designed to fit to the hand form, and thus feature an improved hand position. The fingers are not pressed together - this results in less fatigue during operation.

General ordering data

Type	KSE 160	Version
Order No.	9046410000	VDE-insulated heavy-duty diagonal-cutting pliers, 160 mm long
GTIN (EAN)	4032248357734	
Qty.	1 pc(s).	

FP ESWB TERMINAL SET

Weidmüller Interface GmbH & Co. KG
Klingenbergstraße 26
D-32758 Detmold
Germany
Fon: +49 5231 14-0
Fax: +49 5231 14-292083
www.weidmueller.com

Accessories**Slotted screwdriver**

VDE insulated slot-head screwdriver, SDI DIN 7437, ISO 2380/2, drive output acc. to DIN 5264, ISO 2380/1. SoftFinish grip

**General ordering data**

Type	SDIS 0.4X2.5X75	Version
Order No.	9008370000	Screwdriver, Blade width (B): 2.5 mm, Blade length: 75 mm, Blade
GTIN (EAN)	4032248056330	thickness (A): 0.4 mm
Qty.	1 pc(s).	