

ES EPG/HPG 60 WM 25**Weidmüller Interface GmbH & Co. KG**

Klingenbergstraße 26

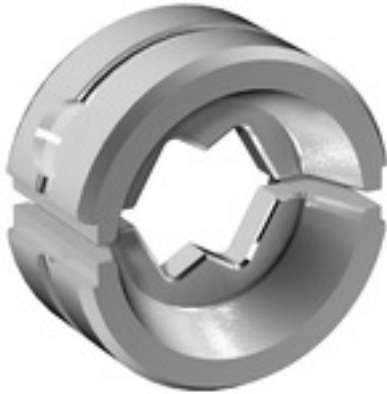
D-32758 Detmold

Germany

Fon: +49 5231 14-0

Fax: +49 5231 14-292083

www.weidmueller.com

Similar to illustration**Crimping tools for cable lugs, connectors and wire-end ferrules with interchangeable inserts**

- extremely fast processing thanks to hydraulic support
- large processing range up to 300 mm²
- 270° revolving quick-action crimping head
- automatic pressure limitation and monitoring via pressure sensor
- electronic control and monitoring of the crimping process
- Saving of all crimping cycles and error messages to internal memory
- Reading of all cycles and error messages via USB
- Li-ion rechargeable battery with charge status indicator: 18 V, 1.5 Ah

General ordering data

Type	ES EPG/HPG 60 WM 25
Order No.	2469560000
Version	Crimping tool insert, WM crimp
GTIN (EAN)	4050118483840
Qty.	1 pc(s).

ES EPG/HPG 60 WM 25

Weidmüller Interface GmbH & Co. KG
 Klingenbergstraße 26
 D-32758 Detmold
 Germany
 Fon: +49 5231 14-0
 Fax: +49 5231 14-292083
 www.weidmueller.com

Technical data

Dimensions and weights

Width	42 mm	Width (inches)	1.654 inch
Height	42 mm	Height (inches)	1.654 inch
Depth	22 mm	Depth (inches)	0.866 inch
Net weight	167 g		

Crimp inserts

Crimp cross-section copper	25	Crimping width in mm	12
Crimping width	12 mm		

Description of contact

Type of contact	Euro series cable lug
-----------------	-----------------------

tool data crimping

Crimping type/profile	WM crimp
-----------------------	----------

Classifications

ETIM 6.0	EC001282	ETIM 7.0	EC001282
eClass 9.0	21-04-90-90	eClass 9.1	21-01-90-90
eClass 10.0	21-04-90-90		