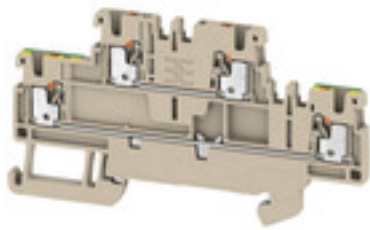


**A-series
A2T 1.5 FT-PE**

Weidmüller Interface GmbH & Co. KG
Klingenbergstraße 26
D-32758 Detmold
Germany
Fon: +49 5231 14-0
Fax: +49 5231 14-292083
www.weidmueller.com

Product image**Spring connection with PUSH IN Technology**

The innovative PUSH IN technology reduces the amount of time you spend on wiring to a minimum. Direct insertion guarantees high conductor pull-out forces and simple handling for all conductor types.

General ordering data

| | |
|------------|--|
| Type | A2T 1.5 FT-PE |
| Order No. | 2469390000 |
| Version | Double-tier terminal, PUSH IN, 1.5 mm ² , 500 V, 16 A, dark beige |
| GTIN (EAN) | 4050118485394 |
| Qty. | 50 pc(s). |

**A-series
A2T 1.5 FT-PE**

Weidmüller Interface GmbH & Co. KG
 Klingenbergstraße 26
 D-32758 Detmold
 Germany
 Fon: +49 5231 14-0
 Fax: +49 5231 14-292083
 www.weidmueller.com

Technical data
Dimensions and weights

| | | | |
|--------------------------|--------|-----------------|------------|
| Width | 3.5 mm | Width (inches) | 0.138 inch |
| Height | 84 mm | Height (inches) | 3.307 inch |
| Depth | 45 mm | Depth (inches) | 1.772 inch |
| Depth including DIN rail | 46 mm | Net weight | 11.059 g |

Temperatures

| | | | |
|----------------------------------|---------------|----------------------------------|--------|
| Storage temperature, max. | 40 °C | Storage temperature, min. | 10 °C |
| Storage temperature | 10 °C...40 °C | Continuous operating temp., min. | -60 °C |
| Continuous operating temp., max. | 130 °C | | |

Material data

| | | | |
|--------------------------------|--------|---------------------------|------------|
| Material | Wemid | Colour | dark beige |
| Colour of operational elements | orange | UL 94 flammability rating | V-0 |

Rating data IECEx/ATEX

| | | | |
|--------------------------------|---------------------|---------------------------------|---------------------|
| Certificate No. (ATEX) | TUEV16ATEX7909U | Certificate No. (IECEX) | IECEXTUR16.0036U |
| Max. voltage (ATEX) | 440 V | Current (ATEX) | 13.5 A |
| Wire cross section max. (ATEX) | 1.5 mm ² | Max. voltage (IECEX) | 440 V |
| Current (IECEX) | 13.5 A | Wire cross section max. (IECEX) | 1.5 mm ² |
| Marking EN 60079-7 | Ex eb II C Gb | Ex 2014/34/EU label | II 2 G D |

System specifications

| | | | |
|-------------------------------|-----|-------------------------------------|-------|
| End cover plate required | Yes | Number of potentials | 2 |
| Number of levels | 2 | Number of clamping points per level | 2 |
| Number of potentials per tier | 1 | Levels cross-connected internally | No |
| PE connection | Yes | Rail | TS 35 |
| N-function | No | PE function | Yes |
| PEN function | No | | |

Additional technical data

| | | | |
|---------------------|-------|-------------------|---------|
| Installation advice | Rail | Open sides | right |
| Snap-on | No | Type of fixing | Snap-on |
| Type of mounting | TS 35 | With snap-in pegs | No |

CSA rating data

| | | | |
|-------------------------------|-----------------|-------------------------------|--------|
| Certificate No. (CSA) | 200039-70089609 | Current size B (CSA) | 13 A |
| Current size C (CSA) | 13 A | Current size D (CSA) | 5 A |
| Voltage size B (CSA) | 300 V | Voltage size C (CSA) | 300 V |
| Voltage size D (CSA) | 600 V | Wire cross section max. (CSA) | 14 AWG |
| Wire cross section min. (CSA) | 26 AWG | | |

A-series
A2T 1.5 FT-PE

Weidmüller Interface GmbH & Co. KG
 Klingenbergstraße 26
 D-32758 Detmold
 Germany
 Fon: +49 5231 14-0
 Fax: +49 5231 14-292083
 www.weidmueller.com

Technical data
Conductors for clamping (rated connection)

| | | | |
|---|----------------------|---|---------------------|
| Blade size | 0.4 x 2.0 mm | Clamping range, max. | 1.5 mm ² |
| Clamping range, min. | 0.14 mm ² | Connection cross-section, stranded, max. | 1.5 mm ² |
| Connection cross-section, stranded, min. | 0.5 mm ² | Connection direction | top |
| Gauge to IEC 60947-1 | A1 | Number of connections | 4 |
| Stripping length | 8 mm | Type of connection | PUSH IN |
| Wire connection cross section AWG, max. | AWG 14 | Wire connection cross section AWG, min. | AWG 26 |
| Wire connection cross section, finely stranded, max. | 1.5 mm ² | Wire connection cross-section, finely stranded with wire-end ferrules DIN 46228/1, max. | 1.5 mm ² |
| Wire connection cross-section, finely stranded with wire-end ferrules DIN 46228/1, min. | 0.5 mm ² | Wire connection cross-section, finely stranded with wire-end ferrules DIN 46228/4, max. | 1 mm ² |
| Wire connection cross-section, finely stranded with wire-end ferrules DIN 46228/4, min. | 0.5 mm ² | Wire connection cross-section, finely stranded, min. | 0.5 mm ² |
| Wire connection cross-section, solid core, max. | 1.5 mm ² | Wire connection cross-section, solid core, min. | 0.5 mm ² |

Rating data

| | | | |
|---|------------------------------|--|---------|
| Rated cross-section | 1.5 mm ² | Rated voltage | 500 V |
| Rated current | 16 A | Current at maximum wires | 16 A |
| Standards | IEC 60947-7-1, IEC 60947-7-2 | Volume resistance according to IEC 60947-7-x | 1.83 mΩ |
| Power loss in accordance with IEC 60947-7-x | 0.56 W | Rated impulse withstand voltage | 6 kV |
| Pollution severity | 3 | Surge voltage category | III |

UL rating data

| | | | |
|--|--------|--|--------|
| Certificate No. (cURus) | E60693 | Conductor size Factory wiring max. (cURus) | 14 AWG |
| Conductor size Factory wiring min. (cURus) | 26 AWG | Conductor size Field wiring max. (cURus) | 14 AWG |
| Conductor size Field wiring min. (cURus) | 26 AWG | Current size B (cURus) | 13 A |
| Current size C (cURus) | 13 A | Current size D (cURus) | 5 A |
| Voltage size B (cURus) | 300 V | Voltage size C (cURus) | 300 V |
| Voltage size D (cURus) | 600 V | | |

Classifications

| | | | |
|-------------|-------------|------------|-------------|
| ETIM 6.0 | EC000897 | ETIM 7.0 | EC000897 |
| eClass 9.0 | 27-14-11-20 | eClass 9.1 | 27-14-11-20 |
| eClass 10.0 | 27-14-11-20 | | |

Data sheet

**A-series
A2T 1.5 FT-PE**

Weidmüller Interface GmbH & Co. KG
 Klingenbergstraße 26
 D-32758 Detmold
 Germany
 Fon: +49 5231 14-0
 Fax: +49 5231 14-292083
 www.weidmueller.com

Technical data

Approvals

Approvals



ROHS

Conform

Downloads

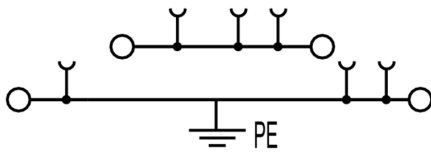
| | |
|---|--|
| Approval/Certificate/Document of Conformity | ATEX Certificate Attestation of Conformity IECEX Certificate DE_PT0101_20171107_010_ISSUE01 |
| Engineering Data | EPLAN |
| Engineering Data | STEP |
| Tender specification | Klippon® Connect 2469390000 DE Klippon® Connect 2469390000 EN |
| User Documentation | StorageConditionsTerminalBlocks Aderendhülsen für die Klippon® Connect A-Reihe NTI A2t 1.5 FT PE |

Data sheet

A-series
A2T 1.5 FT-PE

Weidmüller Interface GmbH & Co. KG
Klingenbergstraße 26
D-32758 Detmold
Germany
Fon: +49 5231 14-0
Fax: +49 5231 14-292083
www.weidmueller.com

Drawings



**A-series
A2T 1.5 FT-PE**

Weidmüller Interface GmbH & Co. KG
 Klingenbergstraße 26
 D-32758 Detmold
 Germany
 Fon: +49 5231 14-0
 Fax: +49 5231 14-292083
 www.weidmueller.com

Accessories

WS 8/3.5



WS/ DEK

MultiMark DEK/WS connector markers use an innovative composite material made from two components. The hard base contour of the marker snaps securely into the connector. The elastic surface finish makes the marker easy to mount. This specially punched material enables the strips to be stretched to accommodate the slight variations in spacing that tend to add up, especially with long terminal blocks. Another advantage: the excellent printability of the surface material guarantees durable and wear-resistant labelling. A print resolution of 300 dpi also produces a very legible script.

Your benefits with MultiMark

- Firm hold and durable printing
- Continuous strips save installation time
- Easy mounting thanks to an innovative composite material
- Large label field for optimal legibility
- High flexibility thanks to manufacturer independence

General ordering data

| | | | |
|------------|----------------------------|---|--|
| Type | WS 8/3.5 MM WS | Version | |
| Order No. | 2007140000 | WS, Terminal marker, 8 x 3.5 mm, Weidmueller, white | |
| GTIN (EAN) | 4050118391893 | | |
| Qty. | 1,000 pc(s). | | |

A-series A2T 1.5 FT-PE

Weidmüller Interface GmbH & Co. KG
 Klingenbergstraße 26
 D-32758 Detmold
 Germany
 Fon: +49 5231 14-0
 Fax: +49 5231 14-292083
 www.weidmueller.com

Accessories

Blank



The Dekafix (DEK) marker is the universal marker for all conductor and plug-in connectors as well as for electronic sub-assemblies. The system is ideal for short number sequences and covers a wide range of ready-printed markers.

Strips for fast installation in only one work step. The printing is easy to read, rich in contrast and available in various widths.

- Large range of ready-to-use markers
- Strips for fast installation
- Terminal markers, suitable for all Weidmüller cable connectors
- Available as blank MultiCard or with standard printing

For custom printing: Please send us a file of our labeling software M-Print PRO or M-Print PRO Online (without installation) for your labeling specifications.

General ordering data

| | | |
|------------|----------------------------|---|
| Type | DEK 5/3.5 PLUS MC NE WS | Version |
| Order No. | 2003750000 | Dekafix, Terminal marker, 5 x 3.5 mm, Pitch in mm (P): 3.50 |
| GTIN (EAN) | 4050118424430 | Weidmueller, white |
| Qty. | 1,600 pc(s). | |
| Type | DEK 5/3.5 MC NE GE | Version |
| Order No. | 1369480000 | Dekafix, Terminal marker, 5 x 3.5 mm, Pitch in mm (P): 3.50 |
| GTIN (EAN) | 4050118171860 | Weidmueller, yellow |
| Qty. | 500 pc(s). | |
| Type | DEK 5/3.5 MC NE WS | Version |
| Order No. | 1755270000 | Dekafix, Terminal marker, 5 x 3.5 mm, Pitch in mm (P): 3.50 |
| GTIN (EAN) | 4032248017348 | Weidmueller, white |
| Qty. | 500 pc(s). | |

Test adapter



Spring connection with PUSH IN Technology

The innovative PUSH IN technology reduces the amount of time you spend on wiring to a minimum. Direct insertion guarantees high conductor pull-out forces and simple handling for all conductor types.

General ordering data

| | |
|------------|----------------------------|
| Type | ATPG 1.5-10 L |
| Order No. | 1991890000 |
| GTIN (EAN) | 4050118376647 |
| Qty. | 50 pc(s). |

Data sheet

A-series A2T 1.5 FT-PE

Weidmüller Interface GmbH & Co. KG
 Klingenbergstraße 26
 D-32758 Detmold
 Germany
 Fon: +49 5231 14-0
 Fax: +49 5231 14-292083
 www.weidmueller.com

Accessories

| | |
|------------|----------------------------|
| Type | ATPG 1.5 MI-R |
| Order No. | 1991880000 |
| GTIN (EAN) | 4050118376715 |
| Qty. | 50 pc(s). |

Covers



Spring connection with PUSH IN Technology

The innovative PUSH IN technology reduces the amount of time you spend on wiring to a minimum. Direct insertion guarantees high conductor pull-out forces and simple handling for all conductor types.

General ordering data

| | | | |
|------------|----------------------------|---------------------------------------|--|
| Type | AAM 1.5 YE FLASH | Version | |
| Order No. | 2635520000 | Terminal marker, 6.2 x 3.5 mm, yellow | |
| GTIN (EAN) | 4050118674088 | | |
| Qty. | 40 pc(s). | | |

ZQV 1.5N



Spring connection with PUSH IN Technology

The innovative PUSH IN technology reduces the amount of time you spend on wiring to a minimum. Direct insertion guarantees high conductor pull-out forces and simple handling for all conductor types.

General ordering data

| | |
|------------|----------------------------|
| Type | ZQV 1.5N/10 |
| Order No. | 1985580000 |
| GTIN (EAN) | 4050118370416 |
| Qty. | 20 pc(s). |
| Type | ZQV 1.5N/20 |
| Order No. | 1985600000 |
| GTIN (EAN) | 4050118370225 |
| Qty. | 20 pc(s). |
| Type | ZQV 1.5N/3 RD |
| Order No. | 1985670000 |
| GTIN (EAN) | 4050118370348 |
| Qty. | 60 pc(s). |
| Type | ZQV 1.5N/50 RD |
| Order No. | 1985820000 |
| GTIN (EAN) | 4050118370270 |
| Qty. | 5 pc(s). |

Creation date May 2, 2020 12:47:51 PM CEST

A-series
A2T 1.5 FT-PE

Weidmüller Interface GmbH & Co. KG
 Klingenbergstraße 26
 D-32758 Detmold
 Germany
 Fon: +49 5231 14-0
 Fax: +49 5231 14-292083
 www.weidmueller.com

Accessories

Type ZQV 1.5N/7
 Order No. [1985520000](#)
 GTIN (EAN) 4050118370195
 Qty. 20 pc(s).

Type ZQV 1.5N/6 RD
 Order No. [1985730000](#)
 GTIN (EAN) 4050118370454
 Qty. 20 pc(s).

Type ZQV 1.5N/2 RD
 Order No. [1985650000](#)
 GTIN (EAN) 4050118370324
 Qty. 60 pc(s).

Type ZQV 1.5N/5
 Order No. [1985500000](#)
 GTIN (EAN) 4050118369991
 Qty. 20 pc(s).

Type ZQV 1.5N/20 BL
 Order No. [1985700000](#)
 GTIN (EAN) 4050118370331
 Qty. 20 pc(s).

Type ZQV 1.5N/4
 Order No. [1985490000](#)
 GTIN (EAN) 4050118370201
 Qty. 60 pc(s).

Type ZQV 1.5N/10 RD
 Order No. [1985800000](#)
 GTIN (EAN) 4050118370393
 Qty. 20 pc(s).

Type ZQV 1.5N/4 BL
 Order No. [1985570000](#)
 GTIN (EAN) 4050118370317
 Qty. 60 pc(s).

Type ZQV 1.5N/2 BL
 Order No. [1985530000](#)
 GTIN (EAN) 4050118370423
 Qty. 60 pc(s).

Type ZQV 1.5N/9
 Order No. [1985560000](#)
 GTIN (EAN) 4050118370409
 Qty. 20 pc(s).

Type ZQV 1.5N/6
 Order No. [1985510000](#)
 GTIN (EAN) 4050118370188
 Qty. 20 pc(s).

Type ZQV 1.5N/10 BL
 Order No. [1985680000](#)
 GTIN (EAN) 4050118370539
 Qty. 20 pc(s).

Type ZQV 1.5N/8
 Order No. [1985540000](#)
 GTIN (EAN) 4050118370218
 Qty. 20 pc(s).

A-series
A2T 1.5 FT-PE

Weidmüller Interface GmbH & Co. KG
 Klingenbergstraße 26
 D-32758 Detmold
 Germany
 Fon: +49 5231 14-0
 Fax: +49 5231 14-292083
 www.weidmueller.com

Accessories

| | |
|------------|----------------------------|
| Type | ZQV 1.5N/5 RD |
| Order No. | 1985710000 |
| GTIN (EAN) | 4050118370256 |
| Qty. | 20 pc(s). |
| Type | ZQV 1.5N/6 BL |
| Order No. | 1985610000 |
| GTIN (EAN) | 4050118370492 |
| Qty. | 20 pc(s). |
| Type | ZQV 1.5N/3 |
| Order No. | 1985480000 |
| GTIN (EAN) | 4050118370096 |
| Qty. | 60 pc(s). |
| Type | ZQV 1.5N/7 BL |
| Order No. | 1985630000 |
| GTIN (EAN) | 4050118370522 |
| Qty. | 20 pc(s). |
| Type | ZQV 1.5N/9 BL |
| Order No. | 1985660000 |
| GTIN (EAN) | 4050118370478 |
| Qty. | 20 pc(s). |
| Type | ZQV 1.5N/3 BL |
| Order No. | 1985550000 |
| GTIN (EAN) | 4050118370485 |
| Qty. | 60 pc(s). |
| Type | ZQV 1.5N/4 RD |
| Order No. | 1985690000 |
| GTIN (EAN) | 4050118370515 |
| Qty. | 60 pc(s). |
| Type | ZQV 1.5N/50 BL |
| Order No. | 1985720000 |
| GTIN (EAN) | 4050118370546 |
| Qty. | 5 pc(s). |
| Type | ZQV 1.5N/2 |
| Order No. | 1985410000 |
| GTIN (EAN) | 4050118369861 |
| Qty. | 60 pc(s). |
| Type | ZQV 1.5N/9 RD |
| Order No. | 1985790000 |
| GTIN (EAN) | 4050118370386 |
| Qty. | 20 pc(s). |
| Type | ZQV 1.5N/7 RD |
| Order No. | 1985750000 |
| GTIN (EAN) | 4050118370249 |
| Qty. | 20 pc(s). |
| Type | ZQV 1.5N/8 BL |
| Order No. | 1985640000 |
| GTIN (EAN) | 4050118370461 |
| Qty. | 20 pc(s). |
| Type | ZQV 1.5N/5 BL |
| Order No. | 1985590000 |
| GTIN (EAN) | 4050118370430 |
| Qty. | 20 pc(s). |

Creation date May 2, 2020 12:47:51 PM CEST

A-series A2T 1.5 FT-PE

Weidmüller Interface GmbH & Co. KG
 Klingenbergstraße 26
 D-32758 Detmold
 Germany
 Fon: +49 5231 14-0
 Fax: +49 5231 14-292083
 www.weidmueller.com

Accessories

Type ZQV 1.5N/50
 Order No. [1985620000](#)
 GTIN (EAN) 4050118370300
 Qty. 5 pc(s).

Type ZQV 1.5N/8 RD
 Order No. [1985770000](#)
 GTIN (EAN) 4050118370508
 Qty. 20 pc(s).

Type ZQV 1.5N/20 RD
 Order No. [1985810000](#)
 GTIN (EAN) 4050118370355
 Qty. 20 pc(s).

Custom printing



WS markers are the perfect match for the W-series connectors. Thanks to their system compatibility, the WS tags can also be used with the I-series and the Z-series. The large marking surfaces do not only permit long character strings but also multi-line text. WS markers are ideal for labels with long, customised character strings. Thanks to the proven MultiCard format, printing with laser printer, PrintJet ADVANCED, plotter or MC-Mobilo is possible.

- Can be fitted in strips or individually
- Markers in proven MultiCard format

For custom printing: Please send us a file of our labeling software M-Print PRO or M-Print PRO Online (without installation) for your labeling specifications.

General ordering data

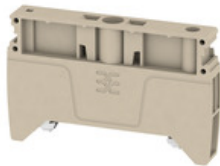
| Type | WS 10/3.5 PLUS MC SDR | Version |
|------------|----------------------------|---|
| Order No. | 2007760000 | WS, Terminal marker, 10 x 3.5 mm, Pitch in mm (P): 3.50 |
| GTIN (EAN) | 4050118393262 | Weidmueller, To customer specification |
| Qty. | 192 pc(s). | |

A-series A2T 1.5 FT-PE

Weidmüller Interface GmbH & Co. KG
 Klingenbergstraße 26
 D-32758 Detmold
 Germany
 Fon: +49 5231 14-0
 Fax: +49 5231 14-292083
 www.weidmueller.com

Accessories

End brackets



Spring connection with PUSH IN Technology

The innovative PUSH IN technology reduces the amount of time you spend on wiring to a minimum. Direct insertion guarantees high conductor pull-out forces and simple handling for all conductor types.

General ordering data

| | | |
|------------|---------------------------|-----------------------|
| Type | AEB 35 SCL/1 V0 BK | Version |
| Order No. | 266130000 | A-series, End bracket |
| GTIN (EAN) | 4050118702187 | |
| Qty. | 20 pc(s). | |
| Type | AEB 35 SCL/1 V0 | Version |
| Order No. | 266128000 | A-series, End bracket |
| GTIN (EAN) | 4050118702163 | |
| Qty. | 20 pc(s). | |
| Type | AEB 35 SCL/1 V0 GY | Version |
| Order No. | 266129000 | A-series, End bracket |
| GTIN (EAN) | 4050118702170 | |
| Qty. | 20 pc(s). | |
| Type | AEB 35 SC/1 | Version |
| Order No. | 199192000 | A-series, End bracket |
| GTIN (EAN) | 4050118376722 | |
| Qty. | 50 pc(s). | |
| Type | AEB 35 SC/1 BK | Version |
| Order No. | 247531000 | A-series, End bracket |
| GTIN (EAN) | 4050118487114 | |
| Qty. | 50 pc(s). | |

Slotted screwdriver

VDE insulated slot-head screwdriver, SDI DIN 7437, ISO 2380/2, drive output acc. to DIN 5264, ISO 2380/1. SoftFinish grip



General ordering data

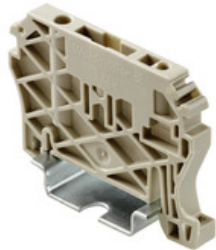
| | | |
|------------|---------------------------|--|
| Type | SDIS 0.4X2.0X60 | Version |
| Order No. | 920569000 | Screwdriver, Blade width (B): 2 mm, Blade length: 60 mm, Blade thickness (A): 0.4 mm |
| GTIN (EAN) | 4032248772995 | |
| Qty. | 1 pc(s). | |

A-series A2T 1.5 FT-PE

Weidmüller Interface GmbH & Co. KG
 Klingenbergstraße 26
 D-32758 Detmold
 Germany
 Fon: +49 5231 14-0
 Fax: +49 5231 14-292083
 www.weidmueller.com

Accessories

End brackets



Spring connection with tension clamp Technology

Tension clamp technology is a universal contact system for all common conductor connection types. Its fantastic level of flexibility makes the tension clamp a profitable alternative connection.

General ordering data

| | | |
|------------|----------------------------|-----------------------|
| Type | ZEW 35/2 | Version |
| Order No. | 8630740000 | Z-series, End bracket |
| GTIN (EAN) | 4032248348916 | |
| Qty. | 20 pc(s). | |
| Type | ZEW 35/2 SW | Version |
| Order No. | 1162610000 | Z-series, End bracket |
| GTIN (EAN) | 4032248962716 | |
| Qty. | 20 pc(s). | |
| Type | ZEW 35/2 GR | Version |
| Order No. | 1227850000 | Z-series, End bracket |
| GTIN (EAN) | 4050118030617 | |
| Qty. | 20 pc(s). | |

Custom printing



The Dekafix (DEK) marker is the universal marker for all conductor and plug-in connectors as well as for electronic sub-assemblies. The system is ideal for short number sequences and covers a wide range of ready-printed markers.

Strips for fast installation in only one work step. The printing is easy to read, rich in contrast and available in various widths.

- Large range of ready-to-use markers
- Strips for fast installation
- Terminal markers, suitable for all Weidmüller cable connectors
- Available as blank MultiCard or with standard printing

For custom printing: Please send us a file of our labeling software M-Print PRO or M-Print PRO Online (without installation) for your labeling specifications.

General ordering data

| | | |
|------------|----------------------------|---|
| Type | DEK 5/3.5 PLUS MC SDR | Version |
| Order No. | 2007790000 | Dekafix, Terminal marker, 5 x 3.5 mm, Pitch in mm (P): 3.50 |
| GTIN (EAN) | 4050118393347 | Weidmueller, To customer specification |
| Qty. | 320 pc(s). | |

Data sheet

**A-series
A2T 1.5 FT-PE**

Weidmüller Interface GmbH & Co. KG
 Klingenbergstraße 26
 D-32758 Detmold
 Germany
 Fon: +49 5231 14-0
 Fax: +49 5231 14-292083
 www.weidmueller.com

Accessories

| | | |
|------------|----------------------------|---|
| Type | DEK 5/3.5 MC SDR | Version |
| Order No. | 1767730000 | Dekafix, Terminal marker, 5 x 3.5 mm, Pitch in mm (P): 3.50 |
| GTIN (EAN) | 4032248102532 | Weidmueller, To customer specification |
| Qty. | 100 pc(s). | |

Digital multimeters



Multimeters are capable of measuring a number of variables. Each instrument can measure voltage and resistance, as well as performing continuity and diode testing as standard. In addition, the individual multimeters also feature extra measuring options such as current, frequency, capacitance and temperature. Digital multimeters have the advantage of a clear display which can be read easily and directly. With these instruments, mistakes arising from faulty conversion of the measuring ranges or misreading the display are a thing of the past.

General ordering data

| | | |
|------------|----------------------------|------------|
| Type | ZUB MULTIMETER | Version |
| Order No. | 9205270000 | Multimeter |
| GTIN (EAN) | 4032248723522 | |
| Qty. | 1 pc(s). | |

**A-series
A2T 1.5 FT-PE**

Weidmüller Interface GmbH & Co. KG
 Klingenbergstraße 26
 D-32758 Detmold
 Germany
 Fon: +49 5231 14-0
 Fax: +49 5231 14-292083
 www.weidmueller.com

Accessories

DEK 5/3.5



WS/ DEK

MultiMark DEK/WS connector markers use an innovative composite material made from two components. The hard base contour of the marker snaps securely into the connector. The elastic surface finish makes the marker easy to mount. This specially punched material enables the strips to be stretched to accommodate the slight variations in spacing that tend to add up, especially with long terminal blocks. Another advantage: the excellent printability of the surface material guarantees durable and wear-resistant labelling. A print resolution of 300 dpi also produces a very legible script.

Your benefits with MultiMark

- Firm hold and durable printing
- Continuous strips save installation time
- Easy mounting thanks to an innovative composite material
- Large label field for optimal legibility
- High flexibility thanks to manufacturer independence

General ordering data

| | | | |
|------------|----------------------------|--|--|
| Type | DEK 5/3.5 MM WS | Version | |
| Order No. | 2007100000 | Dekafix, Terminal marker, 5 x 3.5 mm, Weidmueller, white | |
| GTIN (EAN) | 4050118391992 | | |
| Qty. | 1,000 pc(s). | | |

End plates



Spring connection with PUSH IN Technology

The innovative PUSH IN technology reduces the amount of time you spend on wiring to a minimum. Direct insertion guarantees high conductor pull-out forces and simple handling for all conductor types.

General ordering data

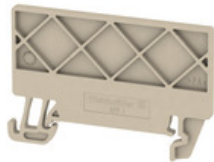
| | | | |
|------------|----------------------------|---------------------|--|
| Type | AEP 2T 1.5 BL | Version | |
| Order No. | 2471470000 | A-series, End plate | |
| GTIN (EAN) | 4050118562293 | | |
| Qty. | 20 pc(s). | | |
| Type | AEP 2T 1.5 | Version | |
| Order No. | 2469420000 | A-series, End plate | |
| GTIN (EAN) | 4050118562255 | | |
| Qty. | 20 pc(s). | | |

**A-series
A2T 1.5 FT-PE**

Weidmüller Interface GmbH & Co. KG
 Klingenbergstraße 26
 D-32758 Detmold
 Germany
 Fon: +49 5231 14-0
 Fax: +49 5231 14-292083
 www.weidmueller.com

Accessories

Partition plates



Spring connection with PUSH IN Technology

The innovative PUSH IN technology reduces the amount of time you spend on wiring to a minimum. Direct insertion guarantees high conductor pull-out forces and simple handling for all conductor types.

General ordering data

| Type | APP 4 | Version |
|------------|----------------------------|----------------------------|
| Order No. | 2489110000 | A-series, Separation plate |
| GTIN (EAN) | 4050118499322 | |
| Qty. | 50 pc(s). | |

Blank



WS markers are the perfect match for the W-series connectors. Thanks to their system compatibility, the WS tags can also be used with the I-series and the Z-series. The large marking surfaces do not only permit long character strings but also multi-line text. WS markers are ideal for labels with long, customised character strings. Thanks to the proven MultiCard format, printing with laser printer, PrintJet ADVANCED, plotter or MC-Mobilo is possible.

- Can be fitted in strips or individually
- Markers in proven MultiCard format

For custom printing: Please send us a file of our labeling software M-Print PRO or M-Print PRO Online (without installation) for your labeling specifications.

General ordering data

| Type | WS 10/3.5 PLUS MC NE WS | Version |
|------------|----------------------------|---|
| Order No. | 2003760000 | WS, Terminal marker, 10 x 3.5 mm, Pitch in mm (P): 3.50 |
| GTIN (EAN) | 4050118424454 | Weidmueller, white |
| Qty. | 960 pc(s). | |