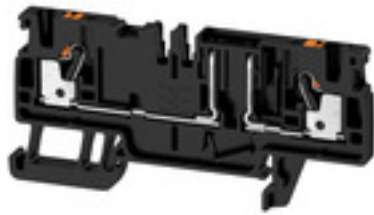


**A-series  
AFS 2.5 CF 2C BK**

**Weidmüller Interface GmbH & Co. KG**  
Klingenbergstraße 26  
D-32758 Detmold  
Germany  
Fon: +49 5231 14-0  
Fax: +49 5231 14-292083  
www.weidmueller.com

**Product image****Spring connection with PUSH IN Technology**

The innovative PUSH IN technology reduces the amount of time you spend on wiring to a minimum. Direct insertion guarantees high conductor pull-out forces and simple handling for all conductor types.

**General ordering data**

Type	AFS 2.5 CF 2C BK
Order No.	<a href="#">2466530000</a>
Version	Fuse terminal, PUSH IN, 2.5 mm <sup>2</sup> , 250 V, 10 A, black
GTIN (EAN)	4050118480825
Qty.	50 pc(s).

Creation date May 2, 2020 1:01:31 PM CEST

Catalogue status 17.04.2020 / We reserve the right to make technical changes.

**A-series**  
**AFS 2.5 CF 2C BK**

**Weidmüller Interface GmbH & Co. KG**  
 Klingenbergstraße 26  
 D-32758 Detmold  
 Germany  
 Fon: +49 5231 14-0  
 Fax: +49 5231 14-292083  
 www.weidmueller.com

**Technical data****Dimensions and weights**

Width	5.1 mm	Width (inches)	0.201 inch
Height	77.5 mm	Height (inches)	3.051 inch
Depth	37.65 mm	Depth (inches)	1.482 inch
Depth including DIN rail	38.4 mm	Net weight	9.124 g

**Temperatures**

Storage temperature, max.	40 °C	Storage temperature, min.	10 °C
Storage temperature	10 °C...40 °C	Continuous operating temp., min.	-60 °C
Continuous operating temp., max.	130 °C		

**Material data**

Material	Wemid	Colour	black
----------	-------	--------	-------

**System specifications**

Version	Without LED	End cover plate required	Yes
Number of potentials	1	Number of levels	1
Number of clamping points per level	2	Number of potentials per tier	1
PE connection	No	Rail	TS 35
N-function	No	PE function	No
PEN function	No		

**Additional technical data**

Installation advice	Rail	Open sides	right
Snap-on	No	Type of fixing	Snap-on
Type of mounting	TS 35	With snap-in pegs	No

**Conductors for clamping (rated connection)**

Blade size	0.6 x 3.5 mm	Clamping range, max.	2.5 mm <sup>2</sup>
Clamping range, min.	0.14 mm <sup>2</sup>	Connection cross-section, stranded, max.	2.5 mm <sup>2</sup>
Connection cross-section, stranded, min.	0.5 mm <sup>2</sup>	Connection direction	top
Gauge to IEC 60947-1	A3	Number of connections	2
Stripping length	10 mm	Twin wire-end ferrules, max.	0.75 mm <sup>2</sup>
Twin wire-end ferrules, min.	0.5 mm <sup>2</sup>	Type of connection	PUSH IN
Wire connection cross section AWG, max.	AWG 12	Wire connection cross section AWG, min.	AWG 28
Wire connection cross section, finely stranded, max.	2.5 mm <sup>2</sup>	Wire connection cross-section, finely stranded with wire-end ferrules DIN 46228/1, max.	2.5 mm <sup>2</sup>
Wire connection cross-section, finely stranded with wire-end ferrules DIN 46228/1, min.	0.5 mm <sup>2</sup>	Wire connection cross-section, finely stranded with wire-end ferrules DIN 46228/4, max.	2.5 mm <sup>2</sup>
Wire connection cross-section, finely stranded with wire-end ferrules DIN 46228/4, min.	0.5 mm <sup>2</sup>	Wire connection cross-section, finely stranded, min.	0.5 mm <sup>2</sup>
Wire connection cross-section, solid core, max.	2.5 mm <sup>2</sup>	Wire connection cross-section, solid core, min.	0.5 mm <sup>2</sup>

**A-series**  
**AFS 2.5 CF 2C BK**

**Weidmüller Interface GmbH & Co. KG**  
 Klingenbergstraße 26  
 D-32758 Detmold  
 Germany  
 Fon: +49 5231 14-0  
 Fax: +49 5231 14-292083  
 www.weidmueller.com

**Technical data****Fuse terminals**

Cartridge fuse	mini fuse	Fuse holder (cartridge holder)	Pivoting
Leakage current, max.	0.5 mA		

**Rating data**

Rated cross-section	2.5 mm <sup>2</sup>	Rated voltage	250 V
Rated voltage to adjoining terminal	500 V	Rated current	10 A
Current at maximum wires	10 A	Standards	In accordance with IEC 60947-7-3
Volume resistance according to IEC 60947-7-x	1.33 mΩ	Power loss in accordance with IEC 60947-7-x	0.77 W
Pollution severity	3	Surge voltage category	III

**UL rating data**

Certificate No. (cURus)	E60693	Conductor size Factory wiring max. (cURus)	12 AWG
Conductor size Factory wiring min. (cURus)	28 AWG	Conductor size Field wiring max. (cURus)	12 AWG
Conductor size Field wiring min. (cURus)	28 AWG	Current size B (cURus)	16 A
Current size C (cURus)	16 A	Current size D (cURus)	10 A
Voltage size B (cURus)	300 V	Voltage size C (cURus)	300 V
Voltage size D (cURus)	300 V		

**Classifications**

ETIM 6.0	EC000899	ETIM 7.0	EC000899
eClass 9.0	27-14-11-16	eClass 9.1	27-14-11-16
eClass 10.0	27-14-11-16		

**Approvals**

Approvals

**Downloads**

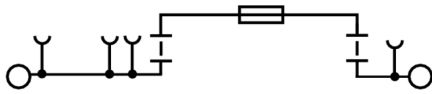
Approval/Certificate/Document of Conformity	<a href="#">IECEX_TUR_17.0030U.pdf</a> <a href="#">ATEX Certificate</a> <a href="#">DE PT0102 2017 1010 040 ISSUE01.pdf</a>
Engineering Data	<a href="#">EPLAN</a>
Engineering Data	<a href="#">STEP</a>
Tender specification	<a href="#">Klippon® Connect 2466530000 EN</a> <a href="#">Klippon® Connect 2466530000 DE</a>
User Documentation	<a href="#">StorageConditionsTerminalBlocks</a> <a href="#">Aderendhülsen für die Klippon® Connect A-Reihe</a>

**Data sheet**

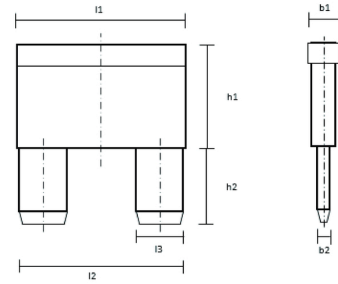
**A-series  
AFS 2.5 CF 2C BK**

**Weidmüller Interface GmbH & Co. KG**  
 Klingenbergstraße 26  
 D-32758 Detmold  
 Germany  
 Fon: +49 5231 14-0  
 Fax: +49 5231 14-292083  
 www.weidmueller.com

**Drawings**



**DIN 72581-3:2001-03**



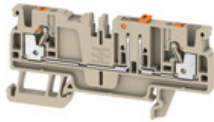
b1	b2	h1	h2	l1	l2	l3
mm	mm	mm	mm	mm	mm	mm
4	0.82	9	7.5	12	10.5	2.8

## A-series AFS 2.5 CF 2C BK

**Weidmüller Interface GmbH & Co. KG**  
 Klingenbergstraße 26  
 D-32758 Detmold  
 Germany  
 Fon: +49 5231 14-0  
 Fax: +49 5231 14-292083  
 www.weidmueller.com

## Accessories

### 2.5 mm<sup>2</sup>



#### Spring connection with PUSH IN Technology

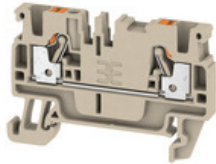
The innovative PUSH IN technology reduces the amount of time you spend on wiring to a minimum. Direct insertion guarantees high conductor pull-out forces and simple handling for all conductor types.

#### General ordering data

Type	A2C 2.5 /DT/FS	Version
Order No.	<a href="#">1989900000</a>	Feed-through terminal, PUSH IN, 2.5 mm <sup>2</sup> , 800 V, 24 A, dark beige
GTIN (EAN)	4050118374476	
Qty.	100 pc(s).	
Type	ADT 2.5 2C	Version
Order No.	<a href="#">1989800000</a>	Test-disconnect terminal, PUSH IN, 2.5 mm <sup>2</sup> , 500 V, 20 A, dark beige
GTIN (EAN)	4050118374322	
Qty.	50 pc(s).	
Type	A2C 2.5 /DT/FS BL	Version
Order No.	<a href="#">1989910000</a>	Feed-through terminal, PUSH IN, 2.5 mm <sup>2</sup> , 800 V, 24 A, blue
GTIN (EAN)	4050118374469	
Qty.	100 pc(s).	
Type	A2C 2.5 /DT/FS OR	Version
Order No.	<a href="#">1989920000</a>	Feed-through terminal, PUSH IN, 2.5 mm <sup>2</sup> , 800 V, 24 A, orange
GTIN (EAN)	4050118374391	
Qty.	100 pc(s).	
Type	ADT 2.5 2C W/O DTLV BL	Version
Order No.	<a href="#">2430040000</a>	PUSH IN, 2.5 mm <sup>2</sup> , 500 V, 20 A, blue
GTIN (EAN)	4050118439908	
Qty.	50 pc(s).	
Type	ADT 2.5 2C BL	Version
Order No.	<a href="#">1989810000</a>	Test-disconnect terminal, PUSH IN, 2.5 mm <sup>2</sup> , 500 V, 20 A, blue
GTIN (EAN)	4050118374353	
Qty.	50 pc(s).	
Type	ADT 2.5 2C W/O DTLV	Version
Order No.	<a href="#">1989930000</a>	Test-disconnect terminal, PUSH IN, 2.5 mm <sup>2</sup> , 500 V, 20 A, dark beige
GTIN (EAN)	4050118374483	
Qty.	50 pc(s).	
Type	ADT 2.5 2C OR	Version
Order No.	<a href="#">1989820000</a>	Test-disconnect terminal, PUSH IN, 2.5 mm <sup>2</sup> , 500 V, 20 A, orange
GTIN (EAN)	4050118374339	
Qty.	50 pc(s).	

**A-series**  
**AFS 2.5 CF 2C BK**

**Weidmüller Interface GmbH & Co. KG**  
 Klingenbergstraße 26  
 D-32758 Detmold  
 Germany  
 Fon: +49 5231 14-0  
 Fax: +49 5231 14-292083  
 www.weidmueller.com

**Accessories**
**2.5 mm<sup>2</sup>**

**Spring connection with PUSH IN Technology**

The innovative PUSH IN technology reduces the amount of time you spend on wiring to a minimum. Direct insertion guarantees high conductor pull-out forces and simple handling for all conductor types.

**General ordering data**

Type	A4C 2.5 OR	Version
Order No.	<a href="#">1521720000</a>	Feed-through terminal, PUSH IN, 2.5 mm <sup>2</sup> , 800 V, 24 A, orange
GTIN (EAN)	4050118327991	
Qty.	100 pc(s).	
Type	A4C 2.5 BR	Version
Order No.	<a href="#">2534750000</a>	Feed-through terminal, PUSH IN, 2.5 mm <sup>2</sup> , 800 V, 24 A, brown
GTIN (EAN)	4050118546347	
Qty.	100 pc(s).	
Type	A4C 2.5 RD	Version
Order No.	<a href="#">1521710000</a>	Feed-through terminal, PUSH IN, 2.5 mm <sup>2</sup> , 800 V, 24 A, red
GTIN (EAN)	4050118328134	
Qty.	100 pc(s).	
Type	A4C 2.5 YL	Version
Order No.	<a href="#">1521730000</a>	Feed-through terminal, PUSH IN, 2.5 mm <sup>2</sup> , 800 V, 24 A, yellow
GTIN (EAN)	4050118328219	
Qty.	100 pc(s).	
Type	A4C 2.5 BK	Version
Order No.	<a href="#">1521820000</a>	Feed-through terminal, PUSH IN, 2.5 mm <sup>2</sup> , 800 V, 24 A, black
GTIN (EAN)	4050118328257	
Qty.	100 pc(s).	
Type	A4C 2.5 LTGY	Version
Order No.	<a href="#">2003130000</a>	Feed-through terminal, PUSH IN, 2.5 mm <sup>2</sup> , 800 V, 24 A, Light Grey
GTIN (EAN)	4050118462821	
Qty.	100 pc(s).	
Type	A4C 2.5 BL	Version
Order No.	<a href="#">1521700000</a>	Feed-through terminal, PUSH IN, 2.5 mm <sup>2</sup> , 800 V, 24 A, blue
GTIN (EAN)	4050118328042	
Qty.	100 pc(s).	
Type	A4C 2.5 DBL	Version
Order No.	<a href="#">2534740000</a>	Feed-through terminal, PUSH IN, 2.5 mm <sup>2</sup> , 800 V, 24 A, Dark Blue
GTIN (EAN)	4050118546330	
Qty.	100 pc(s).	
Type	A4C 2.5	Version
Order No.	<a href="#">1521690000</a>	Feed-through terminal, PUSH IN, 2.5 mm <sup>2</sup> , 800 V, 24 A, dark beige
GTIN (EAN)	4050118328035	
Qty.	100 pc(s).	
Type	A4C 2.5 GN	Version
Order No.	<a href="#">1521770000</a>	Feed-through terminal, PUSH IN, 2.5 mm <sup>2</sup> , 800 V, 24 A, green
GTIN (EAN)	4050118328059	
Qty.	100 pc(s).	

Creation date May 2, 2020 1:01:31 PM CEST

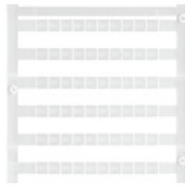
## A-series AFS 2.5 CF 2C BK

**Weidmüller Interface GmbH & Co. KG**  
 Klingenbergstraße 26  
 D-32758 Detmold  
 Germany  
 Fon: +49 5231 14-0  
 Fax: +49 5231 14-292083  
 www.weidmueller.com

## Accessories

Type	A4C 2.5 WT	Version
Order No.	<a href="#">1521790000</a>	Feed-through terminal, PUSH IN, 2.5 mm <sup>2</sup> , 800 V, 24 A, white
GTIN (EAN)	4050118328301	
Qty.	100 pc(s).	

## Plus



The Dekafix (DEK) marker is the universal marker for all conductor and plug-in connectors as well as for electronic sub-assemblies. The system is ideal for short number sequences and covers a wide range of ready-printed markers.

Strips for fast installation in only one work step. The printing is easy to read, rich in contrast and available in various widths.

- Large range of ready-to-use markers
- Strips for fast installation
- Terminal markers, suitable for all Weidmüller cable connectors
- Available as blank MultiCard or with standard printing

**For custom printing:** Please send us a file of our labeling software M-Print PRO or M-Print PRO Online (without installation) for your labeling specifications.

## General ordering data

Type	DEK 5/5 PLUS MC NE WS	Version
Order No.	<a href="#">1854490000</a>	Dekafix, Terminal marker, 5 x 5 mm, Pitch in mm (P): 5.00
GTIN (EAN)	4032248393596	Weidmueller, white
Qty.	1,000 pc(s).	

## Covers



### Spring connection with PUSH IN Technology

The innovative PUSH IN technology reduces the amount of time you spend on wiring to a minimum. Direct insertion guarantees high conductor pull-out forces and simple handling for all conductor types.

## General ordering data

Type	AAM 2.5 YE FLASH	Version
Order No.	<a href="#">2635550000</a>	Terminal marker, 8 x 5.1 mm, yellow
GTIN (EAN)	4050118674095	
Qty.	40 pc(s).	

## A-series AFS 2.5 CF 2C BK

**Weidmüller Interface GmbH & Co. KG**  
 Klingenbergstraße 26  
 D-32758 Detmold  
 Germany  
 Fon: +49 5231 14-0  
 Fax: +49 5231 14-292083  
 www.weidmueller.com

# Accessories

## End brackets



### Spring connection with PUSH IN Technology

The innovative PUSH IN technology reduces the amount of time you spend on wiring to a minimum. Direct insertion guarantees high conductor pull-out forces and simple handling for all conductor types.

### General ordering data

Type	AEB 35 SCL/1 V0 BK	Version
Order No.	<a href="#">266130000</a>	A-series, End bracket
GTIN (EAN)	4050118702187	
Qty.	20 pc(s).	
Type	AEB 35 SCL/1 V0	Version
Order No.	<a href="#">266128000</a>	A-series, End bracket
GTIN (EAN)	4050118702163	
Qty.	20 pc(s).	
Type	AEB 35 SCL/1 V0 GY	Version
Order No.	<a href="#">266129000</a>	A-series, End bracket
GTIN (EAN)	4050118702170	
Qty.	20 pc(s).	
Type	AEB 35 SC/1	Version
Order No.	<a href="#">199192000</a>	A-series, End bracket
GTIN (EAN)	4050118376722	
Qty.	50 pc(s).	
Type	AEB 35 SC/1 BK	Version
Order No.	<a href="#">247531000</a>	A-series, End bracket
GTIN (EAN)	4050118487114	
Qty.	50 pc(s).	

## Slotted screwdriver

VDE insulated slot-head screwdriver, SDI DIN 7437, ISO 2380/2, drive output acc. to DIN 5264, ISO 2380/1. SoftFinish grip



### General ordering data

Type	SDIL 0,6X3,5X100	Version
Order No.	<a href="#">904211000</a>	Screwdriver, Blade width (B): 3.5 mm, 100 mm, Blade thickness (A): 0.6 mm, Yes
GTIN (EAN)	4008190347796	
Qty.	1 pc(s).	



**A-series**  
**AFS 2.5 CF 2C BK**

**Weidmüller Interface GmbH & Co. KG**  
 Klingenbergstraße 26  
 D-32758 Detmold  
 Germany  
 Fon: +49 5231 14-0  
 Fax: +49 5231 14-292083  
 www.weidmueller.com

**Accessories****ZQV 2.5N****Spring connection with PUSH IN Technology**

The innovative PUSH IN technology reduces the amount of time you spend on wiring to a minimum. Direct insertion guarantees high conductor pull-out forces and simple handling for all conductor types.

**General ordering data**

Type	ZQV 2.5N/10
Order No.	<a href="#">1527690000</a>
GTIN (EAN)	4050118447989
Qty.	20 pc(s).
Type	ZQV 2.5N/8
Order No.	<a href="#">1527670000</a>
GTIN (EAN)	4050118448405
Qty.	20 pc(s).
Type	ZQV 2.5N/20
Order No.	<a href="#">1527720000</a>
GTIN (EAN)	4050118447972
Qty.	20 pc(s).
Type	ZQV 2.5N/2
Order No.	<a href="#">1527540000</a>
GTIN (EAN)	4050118448467
Qty.	60 pc(s).
Type	ZQV 2.5N/3
Order No.	<a href="#">1527570000</a>
GTIN (EAN)	4050118448450
Qty.	60 pc(s).
Type	ZQV 2.5N/6
Order No.	<a href="#">1527630000</a>
GTIN (EAN)	4050118448429
Qty.	20 pc(s).
Type	ZQV 2.5N/4
Order No.	<a href="#">1527590000</a>
GTIN (EAN)	4050118448443
Qty.	60 pc(s).
Type	ZQV 2.5N/7
Order No.	<a href="#">1527640000</a>
GTIN (EAN)	4050118448412
Qty.	20 pc(s).
Type	ZQV 2.5N/50
Order No.	<a href="#">1527730000</a>
GTIN (EAN)	4050118411362
Qty.	5 pc(s).
Type	ZQV 2.5N/5
Order No.	<a href="#">1527620000</a>
GTIN (EAN)	4050118448436
Qty.	20 pc(s).

**Data sheet**

**A-series  
AFS 2.5 CF 2C BK**

**Weidmüller Interface GmbH & Co. KG**  
 Klingenbergstraße 26  
 D-32758 Detmold  
 Germany  
 Fon: +49 5231 14-0  
 Fax: +49 5231 14-292083  
 www.weidmueller.com

**Accessories**

Type	ZQV 2.5N/9
Order No.	<a href="#">1527680000</a>
GTIN (EAN)	4050118447996
Qty.	20 pc(s).

**Digital multimeters**

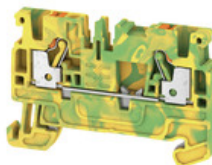


Multimeters are capable of measuring a number of variables. Each instrument can measure voltage and resistance, as well as performing continuity and diode testing as standard. In addition, the individual multimeters also feature extra measuring options such as current, frequency, capacitance and temperature. Digital multimeters have the advantage of a clear display which can be read easily and directly. With these instruments, mistakes arising from faulty conversion of the measuring ranges or misreading the display are a thing of the past.

**General ordering data**

Type	ZUB MULTIMETER	Version	
Order No.	<a href="#">9205270000</a>	Multimeter	
GTIN (EAN)	4032248723522		
Qty.	1 pc(s).		

**2.5 mm<sup>2</sup>**



**Spring connection with PUSH IN Technology**  
 The innovative PUSH IN technology reduces the amount of time you spend on wiring to a minimum. Direct insertion guarantees high conductor pull-out forces and simple handling for all conductor types.

**General ordering data**

Type	A4C 2.5 PE	Version	
Order No.	<a href="#">1521540000</a>	PE terminal, PUSH IN, 2.5 mm <sup>2</sup> , Green/yellow	
GTIN (EAN)	4050118328349		
Qty.	50 pc(s).		

**A-series  
AFS 2.5 CF 2C BK**

**Weidmüller Interface GmbH & Co. KG**  
 Klingenbergstraße 26  
 D-32758 Detmold  
 Germany  
 Fon: +49 5231 14-0  
 Fax: +49 5231 14-292083  
 www.weidmueller.com

**Accessories**

**End plates**



**Spring connection with PUSH IN Technology**

The innovative PUSH IN technology reduces the amount of time you spend on wiring to a minimum. Direct insertion guarantees high conductor pull-out forces and simple handling for all conductor types.

**General ordering data**

Type	AEP 4C 2.5 OR	Version
Order No.	<a href="#">2052310000</a>	A-series, End plate
GTIN (EAN)	4050118411973	
Qty.	50 pc(s).	
Type	AEP 4C 2.5 BL	Version
Order No.	<a href="#">1521640000</a>	A-series, End plate
GTIN (EAN)	4050118328400	
Qty.	50 pc(s).	
Type	AEP 4C 2.5	Version
Order No.	<a href="#">1521530000</a>	A-series, End plate
GTIN (EAN)	4050118328165	
Qty.	50 pc(s).	
Type	AEP 4C 2.5 BK	Version
Order No.	<a href="#">2486660000</a>	A-series, End plate
GTIN (EAN)	4050118497441	
Qty.	50 pc(s).	

**A-series  
AFS 2.5 CF 2C BK**

**Weidmüller Interface GmbH & Co. KG**  
 Klingenbergstraße 26  
 D-32758 Detmold  
 Germany  
 Fon: +49 5231 14-0  
 Fax: +49 5231 14-292083  
 www.weidmueller.com

**Accessories**

**DEK 5/5**



**WS/ DEK**

MultiMark DEK/WS connector markers use an innovative composite material made from two components. The hard base contour of the marker snaps securely into the connector. The elastic surface finish makes the marker easy to mount. This specially punched material enables the strips to be stretched to accommodate the slight variations in spacing that tend to add up, especially with long terminal blocks. Another advantage: the excellent printability of the surface material guarantees durable and wear-resistant labelling. A print resolution of 300 dpi also produces a very legible script.

**Your benefits with MultiMark**

- Firm hold and durable printing
- Continuous strips save installation time
- Easy mounting thanks to an innovative composite material
- Large label field for optimal legibility
- High flexibility thanks to manufacturer independence

**General ordering data**

Type	DEK 5/5 MM WS	Version	
Order No.	<a href="#">2007110000</a>		Dekafix, Terminal marker, 5 x 5 mm, Weidmueller, white
GTIN (EAN)	4050118391862		
Qty.	800 pc(s).		

## A-series AFS 2.5 CF 2C BK

**Weidmüller Interface GmbH & Co. KG**  
 Klingenbergstraße 26  
 D-32758 Detmold  
 Germany  
 Fon: +49 5231 14-0  
 Fax: +49 5231 14-292083  
 www.weidmueller.com

# Accessories

## WS 8/5



### WS/ DEK

MultiMark DEK/WS connector markers use an innovative composite material made from two components. The hard base contour of the marker snaps securely into the connector. The elastic surface finish makes the marker easy to mount. This specially punched material enables the strips to be stretched to accommodate the slight variations in spacing that tend to add up, especially with long terminal blocks. Another advantage: the excellent printability of the surface material guarantees durable and wear-resistant labelling. A print resolution of 300 dpi also produces a very legible script.

#### Your benefits with MultiMark

- Firm hold and durable printing
- Continuous strips save installation time
- Easy mounting thanks to an innovative composite material
- Large label field for optimal legibility
- High flexibility thanks to manufacturer independence

### General ordering data

Type	WS 8/5 MM WS	Version	
Order No.	<a href="#">2007150000</a>	WS, Terminal marker, 8 x 5 mm, Weidmueller, white	
GTIN (EAN)	4050118392029		
Qty.	800 pc(s).		

### Additional accessories



### No task is too small when creating the perfect solution.

Connections form just one part of the overall process. Small details are often the key to the perfect solution in applications where potentials are tested, grouped or even isolated.

A system is not a system without small but essential details:

- Test plugs ensure reliable pick-up from diagnostic sockets

In tandem with the manufacturing process and application.

### General ordering data

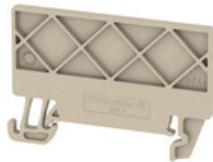
Type	PS 2.0 MC	Version	Product data	Packaging
Order No.	<a href="#">0310000000</a>	PCB plug-in connector, Accessories, Test plug, red, Number of poles: 1		Box
GTIN (EAN)	4008190000059			
Qty.	20 pc(s).			

**A-series  
AFS 2.5 CF 2C BK**

**Weidmüller Interface GmbH & Co. KG**  
 Klingenbergstraße 26  
 D-32758 Detmold  
 Germany  
 Fon: +49 5231 14-0  
 Fax: +49 5231 14-292083  
 www.weidmueller.com

**Accessories**

**Partition plates**



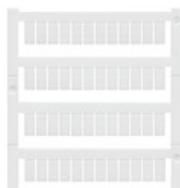
**Spring connection with PUSH IN Technology**

The innovative PUSH IN technology reduces the amount of time you spend on wiring to a minimum. Direct insertion guarantees high conductor pull-out forces and simple handling for all conductor types.

**General ordering data**

Type	APP 2	Version
Order No.	<a href="#">2489090000</a>	A-series, Separation plate
GTIN (EAN)	4050118499308	
Qty.	50 pc(s).	

**Blank**



WS markers are the perfect match for the W-series connectors. Thanks to their system compatibility, the WS tags can also be used with the I-series and the Z-series. The large marking surfaces do not only permit long character strings but also multi-line text. WS markers are ideal for labels with long, customised character strings. Thanks to the proven MultiCard format, printing with laser printer, PrintJet ADVANCED, plotter or MC-Mobilo is possible.

- Can be fitted in strips or individually
- Markers in proven MultiCard format

**For custom printing:** Please send us a file of our labeling software M-Print PRO or M-Print PRO Online (without installation) for your labeling specifications.

**General ordering data**

Type	WS 10/5 M PLUS MC NE WS	Version
Order No.	<a href="#">2003770000</a>	WS, Terminal marker, 10 x 5 mm, Pitch in mm (P): 5.00 Weidmueller,
GTIN (EAN)	4050118424447	Allen-Bradley, white
Qty.	600 pc(s).	