

**ACT20X
ACT20X-HDI-SDO-P**

Weidmüller Interface GmbH & Co. KG
Klingenbergstraße 26
D-32758 Detmold
Germany
Fon: +49 5231 14-0
Fax: +49 5231 14-292083
www.weidmueller.com

Product image, Similar to illustration

The ACT20X HDI SDO S / 2HDI-2SDO-S isolating switch amplifiers are specially designed for recording NAMUR sensor signals and digital switching signals which originate from Ex zone 0.

Negative-switching (NPN) transistor outputs are used to transmit the signals to applications in the safe zone.

Integrated alarm contacts issue an alert in the event of a malfunction; this makes troubleshooting easier and increases system availability.

The rail mounted disconnect-switch amplifiers are optionally available in one- or two-channel versions.

With 11 mm width per channel, the devices need little space in the electrical cabinet.

General ordering data

Type	ACT20X-HDI-SDO-P
Order No.	2456070000
Version	EX signal isolating converter, Ex-input: NAMUR sensor/switch, Safe-output: Optocoupler, 1-channel
GTIN (EAN)	4050118471267
Qty.	1 pc(s).

Creation date May 2, 2020 1:58:48 PM CEST

Catalogue status 17.04.2020 / We reserve the right to make technical changes.

ACT20X
ACT20X-HDI-SDO-P

Weidmüller Interface GmbH & Co. KG
 Klingenbergstraße 26
 D-32758 Detmold
 Germany
 Fon: +49 5231 14-0
 Fax: +49 5231 14-292083
 www.weidmueller.com

Technical data
Dimensions and weights

Width	22.5 mm	Width (inches)	0.886 inch
Height	127.3 mm	Height (inches)	5.012 inch
Depth	114.6 mm	Depth (inches)	4.512 inch
Net weight	170 g		

Temperatures

Humidity	0...95 % (no condensation)	Operating temperature, max.	60 °C
Operating temperature, min.	-20 °C	Storage temperature, max.	85 °C
Storage temperature, min.	-20 °C	Operating temperature	-20 °C...60 °C
Storage temperature	-20 °C...85 °C		

Probability of failure

MTBF	215 Years
------	-----------

Environmental Product Compliance

REACH SVHC	Lead 7439-92-1
------------	----------------

Rated data UL

UL certificate	E337701.pdf
----------------	-------------

Input EX

Input frequency	0...5 kHz	Input resistance	1 kΩ
Output signal in case of wire break	< 0.1 mA, > 6.5 mA (in case of wire break)	Pulse duration	> 0.1 ms
Resistance	Series resistor 750Ω, Parallel resistor 15kΩ	Sensor	NAMUR sensor, according to EN60947-5-6, switch with or without RS, RP
Sensor supply	8 V DC / 8 mA	Trigger level high	> 2.1 mA
Trigger level low	< 1.2 mA	Type	intrinsically safe circuit

Alarm output

Alarm function	Line interruption at the input, Short circuit at input, No supply voltage, Device error	Type	Relay, 1 NC (voltage-free)
Nominal switching voltage	≤ 125 V AC / 110 V DC (safe area) ≤ 32 V AC / 32 V DC (zone 2)	Continuous current	≤ 0.5 A AC / 0.3 A DC (safe zone), ≤ 0,5 A AC / 1 A DC (zone 2)
Power rating	≤ 62.5 VA / 32 W (safe area) ≤ 16 VA / 32 W (Zone 2)		

General specifications

Configuration	With FDT/DTM software	Voltage supply	19.2...31.2 V DC
Type of connection	PUSH IN	NAMUR supply	8 V DC / 8 mA
Power consumption	≤ 1.1 W	Protection degree	IP20
Humidity	0...95 % (no condensation)		

Creation date May 2, 2020 1:58:48 PM CEST

ACT20X
ACT20X-HDI-SDO-P

Weidmüller Interface GmbH & Co. KG
 Klingenbergstraße 26
 D-32758 Detmold
 Germany
 Fon: +49 5231 14-0
 Fax: +49 5231 14-292083
 www.weidmueller.com

Technical data
Insulation coordination

EMC standards	DIN EN 61326, NE 21	Insulation voltage	2.6 kV (input / output)
Rated voltage	300 V		

Digital output

Type	NPN-Transistor	Nominal switching voltage	30 V DC
Continuous current	80 mA	Function	Output = input, direct or inverse (configurable)

Data for Ex applications (ATEX)

Voltage U_0	10.6 V DC	Current I_0	12 mA DC
Power P_0	32 mW	Marking	II (1) G [Ex ia Ga] IIC/IIB/ IIA, II (1) D [Ex ia Da] IIIC, I (M1) [Ex ia Ma] I
Installation location	Device installed in safe area, zone 2		

Safety-related basic specifications

Demand mode	High	Demand rate	1,000 s
Description of the "safe state"	High impedance	Device type	B
Diagnostic test interval	10 s	Hardware fault tolerance (HFT)	0
Mean Time To Repair (MTTR)	8 h	Safe Failure Fraction (SFF)	92 %
T_{proof}	5 Years	Total failure rate for dangerous detected failures (λ_{DD})	135 FIT
Total failure rate for dangerous undetected failures (λ_{DU})	36 FIT	Total failure rate for safe detected failures (λ_{SD})	0 FIT
Total failure rate for safe undetected failures (λ_{SU})	275 FIT	Safety category	SIL 2
Probability of outage PFH	$3.62 \times 10^{-8} \text{ h}^{-1}$		

Safety-related specifications Low demand mode

Average Probability of Failure on Demand (PFD_{avg})	1.58×10^{-4} ($T_{proof} = 1$ year), 3.17×10^{-4} ($T_{proof} = 2$ years), 7.92×10^{-4} ($T_{proof} = 5$ years)
--	---

Connection data

Type of connection	PUSH IN	Wire connection cross section AWG, min.	AWG 26
Wire connection cross section AWG, max.	AWG 14	Wire cross-section, solid, min.	0.2 mm ²
Wire cross-section, solid, max.	2.5 mm ²	Wire connection cross-section, finely stranded, min.	0.2 mm ²
Wire connection cross section, finely stranded, max.	2.5 mm ²	Wire connection cross-section, finely stranded with wire-end ferrules DIN 46228/4, min.	0.2 mm ²
Wire connection cross-section, finely stranded with wire-end ferrules DIN 46228/4, max.	2.5 mm ²		

Data sheet

**ACT20X
ACT20X-HDI-SDO-P**

Weidmüller Interface GmbH & Co. KG
 Klingenbergstraße 26
 D-32758 Detmold
 Germany
 Fon: +49 5231 14-0
 Fax: +49 5231 14-292083
 www.weidmueller.com

Technical data

Classifications

ETIM 6.0	EC002653	ETIM 7.0	EC002653
eClass 9.0	27-21-01-20	eClass 9.1	27-21-01-20
eClass 10.0	27-21-01-20		

Approvals

Approvals



ROHS	Conform
------	---------

Downloads

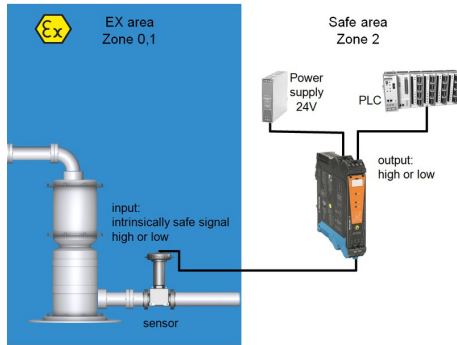
Approval/Certificate/Document of Conformity	Certification SIL Certification DNV-GL Certification ATEX Certification IECEX Declaration of Conformity
Engineering Data	STEP
Software	WI-Manager, DTM-Library for online installation V.1.2.0
User Documentation	MAN SAFETY ACT20X-(2)HDI(2)SDO-S Instruction sheet Handbuch ACT20X- Serie, deutsch Manual ACT20X- series, english

**ACT20X
ACT20X-HDI-SDO-P**

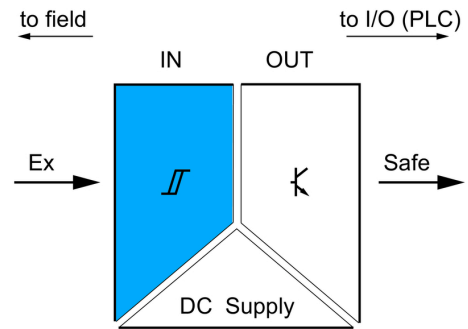
Weidmüller Interface GmbH & Co. KG
Klingenbergstraße 26
D-32758 Detmold
Germany
Fon: +49 5231 14-0
Fax: +49 5231 14-292083
www.weidmueller.com

Drawings

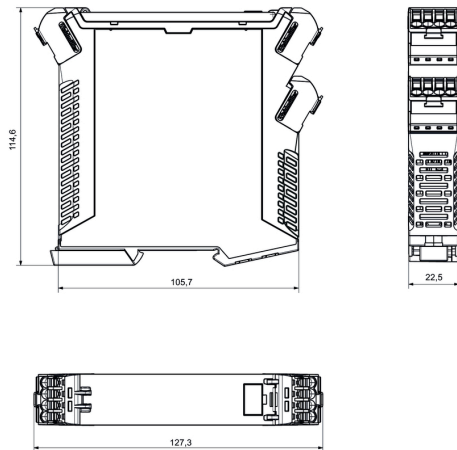
Application



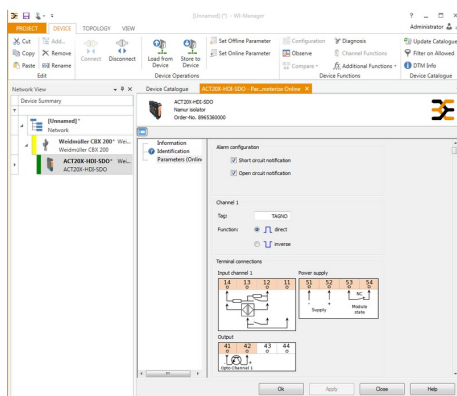
Block diagram



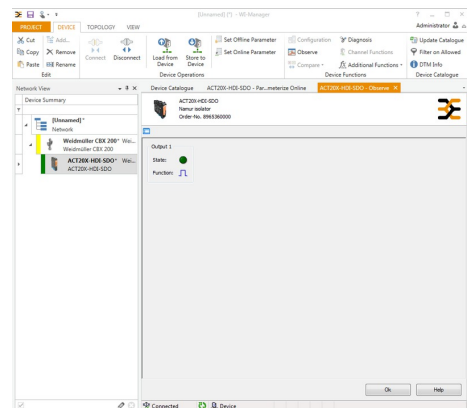
Dimensioned drawing



Similar to illustration



screenshot of configuration with FDT2 / DTM software



screenshot of "observe" with FDT2 / DTM software

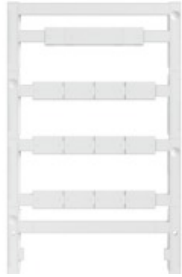
Data sheet

**ACT20X
ACT20X-HDI-SDO-P**

Weidmüller Interface GmbH & Co. KG
 Klingenbergstraße 26
 D-32758 Detmold
 Germany
 Fon: +49 5231 14-0
 Fax: +49 5231 14-292083
 www.weidmueller.com

Accessories

Accessories



Accessories for the analogue signal processing products:

- End plates: for components with terminal-block design
- Retaining clips: for mounting IP6X signal isolators and displays
- Calibration devices: for calibrating and setting analogue signal converters
- MICRO interface: for direct transmission to a controller thus minimizing the wiring overhead
- markers
- Programming adapter: for configuring PC-configurable modules
- Cross-connector
- Power supply modules / power supplies
- Optional connection terminals and cold-junction compensation terminals

General ordering data

Type	CBX200 USB
Order No.	8978580000
GTIN (EAN)	4032248813759
Qty.	1 pc(s).

Accessories



Accessories for the analogue signal processing products:

- End plates: for components with terminal-block design
- Retaining clips: for mounting IP6X signal isolators and displays
- Calibration devices: for calibrating and setting analogue signal converters
- MICRO interface: for direct transmission to a controller thus minimizing the wiring overhead
- markers
- Programming adapter: for configuring PC-configurable modules
- Cross-connector
- Power supply modules / power supplies
- Optional connection terminals and cold-junction compensation terminals

General ordering data

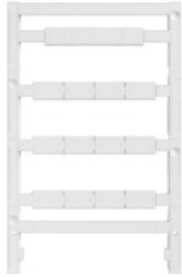
Type	ESG 8/13.5/43.3 SAI AU	Version	
Order No.	1912130000	ESG, Device markers x 13.5 mm, PA 66, Colour: Transparent	
GTIN (EAN)	4032248541164		
Qty.	5 pc(s).		

**ACT20X
ACT20X-HDI-SDO-P**

Weidmüller Interface GmbH & Co. KG
 Klingenbergstraße 26
 D-32758 Detmold
 Germany
 Fon: +49 5231 14-0
 Fax: +49 5231 14-292083
 www.weidmueller.com

Accessories

Accessories for network-compatible current measuring transducers



Accessories for the analogue signal processing products:

- End plates: for components with terminal-block design
- Retaining clips: for mounting IP6X signal isolators and displays
- Calibration devices: for calibrating and setting analogue signal converters
- MICRO interface: for direct transmission to a controller thus minimizing the wiring overhead
- markers
- Programming adapter: for configuring PC-configurable modules
- Cross-connector
- Power supply modules / power supplies
- Optional connection terminals and cold-junction compensation terminals

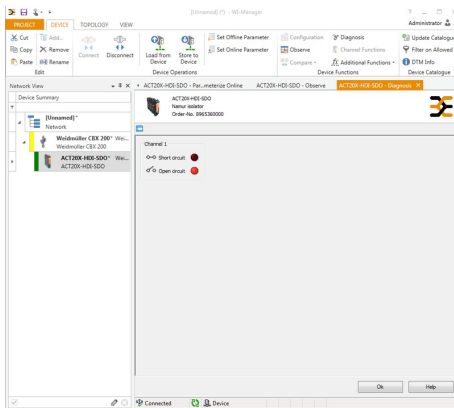
General ordering data

Type	ESG 6.6/20 BHZ 5.00/04	Version
Order No.	1082540000	ESG, Device markers x 20 mm, PA 66, Colour: white
GTIN (EAN)	4032248845439	
Qty.	200 pc(s).	

**ACT20X
ACT20X-HDI-SDO-P**

Weidmüller Interface GmbH & Co. KG
 Klingenbergstraße 26
 D-32758 Detmold
 Germany
 Fon: +49 5231 14-0
 Fax: +49 5231 14-292083
 www.weidmueller.com

Drawings



screenshot of "diagnosis" with FDT2 / DTM software

Connection diagram

