

**SAIFG-M14X1-B-1****Weidmüller Interface GmbH & Co. KG**

Klingenbergstraße 26

D-32758 Detmold

Germany

Fon: +49 5231 14-0

Fax: +49 5231 14-292083

www.weidmueller.com

**Similar to illustration**

Weidmüller is one of the industry's leading international providers of connectors. An important mainstay in this product family are the circular connectors, which Weidmüller groups under the product name SAI. In the development of SAI products, Weidmüller engineers have always concentrated on achieving rational, cost-effective installation concepts, and – in cooperation with major users – have supplied the markets with well-conceived products which set standards in terms of functionality and quality across the globe. The best examples are the new power distributors with S and T coded M12. These modules are characterised by particularly high currents and voltages. This enables them to also be used, for example, with three-phase motors.

**General ordering data**

|            |  |
|------------|--|
| Type       | SAIFG-M14X1-B-1  |
| Order No.  | <a href="#">2423920000</a>                               |
| Version    | Built-in plug housing, M12 socket, Mounting height: 9 mm |
| GTIN (EAN) | 4050118431803  |
| Qty.       | 25 pc(s).  |

Creation date May 2, 2020 6:02:11 PM CEST

Catalogue status 17.04.2020 / We reserve the right to make technical changes.

**SAIFG-M14X1-B-1****Weidmüller Interface GmbH & Co. KG**

Klingenbergstraße 26

D-32758 Detmold

Germany

Fon: +49 5231 14-0

Fax: +49 5231 14-292083

www.weidmueller.com

**Technical data****Dimensions and weights**

Net weight 7.08 g

**Environmental Product Compliance**

REACH SVHC Lead 7439-92-1

**Technical data of PCB plug-in connector**

|                       |            |                   |               |
|-----------------------|------------|-------------------|---------------|
| Coding                | none       | Housing surface   | nickel-plated |
| Housings              | M12 socket | Mounting height   | 9 mm          |
| Housing main material | CuZn       | Connection thread | M12           |
| Mounting thread       | M 14       | Seal material     | FKM           |

**System parameters**

Pin series quantity 1

**Classifications**

|            |             |             |             |
|------------|-------------|-------------|-------------|
| ETIM 6.0   | EC000437    | ETIM 7.0    | EC000437    |
| eClass 9.1 | 27-44-02-02 | eClass 10.0 | 27-44-02-24 |

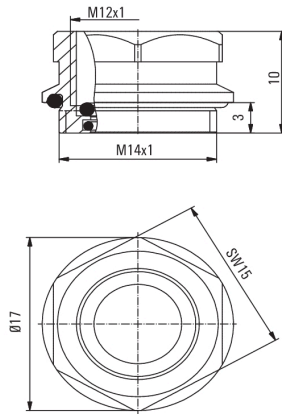
**Approvals**

ROHS Conform

**Downloads**Brochure/Catalogue [FL FIELDWIRING EN](#)

**SAIFG-M14X1-B-1**

**Weidmüller Interface GmbH & Co. KG**  
Klingenbergstraße 26  
D-32758 Detmold  
Germany  
Fon: +49 5231 14-0  
Fax: +49 5231 14-292083  
[www.weidmueller.com](http://www.weidmueller.com)

**Drawings****Dimensioned drawing**

**SAIFG-M14X1-B-1****Weidmüller Interface GmbH & Co. KG**

Klingenbergstraße 26

D-32758 Detmold

Germany

Fon: +49 5231 14-0

Fax: +49 5231 14-292083

www.weidmueller.com

**Accessories****Accessories**

Weidmüller is one of the industry's leading international providers of connectors. An important mainstay in this product family are the circular connectors, which Weidmüller groups under the product name SAI. In the development of SAI products, Weidmüller engineers have always concentrated on achieving rational, cost-effective installation concepts, and – in cooperation with major users – have supplied the markets with well-conceived products which set standards in terms of functionality and quality across the globe. The best examples are the new power distributors with S and T coded M12. These modules are characterised by particularly high currents and voltages. This enables them to also be used, for example, with three-phase motors.

**General ordering data**

|            |                            |         |
|------------|----------------------------|---------|
| Type       | SAIE-KMM14X1-SW15          | Version |
| Order No.  | <a href="#">2424010000</a> | Locknut |
| GTIN (EAN) | 4050118431230              |         |
| Qty.       | 25 pc(s).                  |         |