

## WM WM 3/12 5.0-8.0 MM GE

**Weidmüller Interface GmbH & Co. KG**  
 Klingenbergstraße 26  
 D-32758 Detmold  
 Germany  
 Fon: +49 5231 14-0  
 Fax: +49 5231 14-292083  
[www.weidmueller.com](http://www.weidmueller.com)



### Un-detachable: WM

Our closed, un-detachable markers are mounted without the need for additional tools. The cable is simply threaded through the openings at both ends before the cables are fixed in position. The inherent tension of the material fixes the marker in place. WM markers are available in four sizes for conductor cross-sections from 0.25mm<sup>2</sup> to 16mm<sup>2</sup>. Each size comes in three label lengths and two colours. This provides you with just the right assortment for carrying out everyday labelling of conductors in a cabinet.

### Your benefits with MultiMark

- Compact, practice-oriented range of products
- Quickly printed and assembled
- Reliable identification of your connections
- Excellent material properties

### General ordering data

Type	WM 3/12 5.0-8.0 MM GE
Order No.	<a href="#">2006310000</a>
Version	WM, Conductor and cable markers, 5 - 8 mm, 23 x 10 mm, yellow
GTIN (EAN)	4050118390520
Qty.	2,000 pc(s).
compatible printer	<a href="#">2599430000</a> <a href="#">2599440000</a>

## Data sheet

### WM WM 3/12 5.0-8.0 MM GE

**Weidmüller Interface GmbH & Co. KG**  
 Klingenbergstraße 26  
 D-32758 Detmold  
 Germany  
 Fon: +49 5231 14-0  
 Fax: +49 5231 14-292083  
 www.weidmueller.com

## Technical data

### Dimensions and weights

Width	10 mm	Width (inches)	0.394 inch
Height	23 mm	Height (inches)	0.906 inch
Depth	0.5 mm	Depth (inches)	0.02 inch
Net weight	0.186 g		

### General data

Colour	yellow	Halogen	No
Material	Polyester	Operating temperature range	-40... 150 °C
Size of labelling field	12 x 10 mm	UL 94 flammability rating	HB
Version	halogen-free	Width	10 mm

### Conductor and cable markers

Conductor O.D.	5 - 8 mm	Conductor O.D., max.	8 mm
Conductor O.D., min.	5 mm	Conductor cross-section, max.	16 mm <sup>2</sup>
Conductor cross-section, min.	4 mm <sup>2</sup>	Halogen	No

### Classifications

ETIM 6.0	EC001530	ETIM 7.0	EC001530
eClass 9.0	27-40-04-01	eClass 9.1	27-40-04-01
eClass 10.0	27-40-04-01		

### Approvals

ROHS	Conform
------	---------

### Downloads

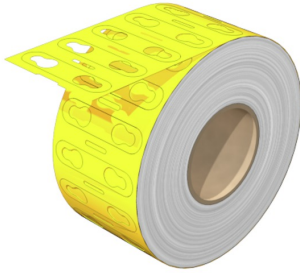
Engineering Data	<a href="#">EPLAN, WSCAD, Zuken E3.S</a>
Engineering Data	<a href="#">STEP</a>

**Data sheet**

**WM  
WM 3/12 5.0-8.0 MM GE**

**Weidmüller Interface GmbH & Co. KG**  
Klingenbergstraße 26  
D-32758 Detmold  
Germany  
Fon: +49 5231 14-0  
Fax: +49 5231 14-292083  
[www.weidmueller.com](http://www.weidmueller.com)

**Drawings**



**WM  
WM 3/12 5.0-8.0 MM GE**

**Weidmüller Interface GmbH & Co. KG**  
 Klingenbergstraße 26  
 D-32758 Detmold  
 Germany  
 Fon: +49 5231 14-0  
 Fax: +49 5231 14-292083  
 www.weidmueller.com

**Accessories**

**Ink ribbons THM MMP**



These printers produce excellent printing results thanks to the thermal transfer technique. Different materials and the user-friendly printing system under Windows optimise marking efforts.

**General ordering data**

Type	RIBBON MM 76/360 SW	Version
Order No.	<a href="#">2005080000</a>	Ink ribbon
GTIN (EAN)	4050118389951	
Qty.	1 pc(s).	

**Accessories / replacement parts**



Our marking systems can be used to quickly and reliably label connector markers, conductor and cable markers, device markers and labels. The M-Print® PRO software enables rapid and easy identification of your electrical equipment. You can design, label and order your marking materials professionally and quickly. Frames, barcodes, graphics or photos are easily incorporated. The versatile data conversion routines enable quick and flexible data integration. The Weidmüller PrintJet ADVANCED, MCP Plus and MCP Basic printers and the THM series printers are available for printing.

**General ordering data**

Type	THM MMP ROLLER 115
Order No.	<a href="#">1357420000</a>
GTIN (EAN)	4050118160314
Qty.	1 pc(s).
Type	MM PLUS ROLLER 110
Order No.	<a href="#">2672590000</a>
GTIN (EAN)	4050118708097
Qty.	1 pc(s).