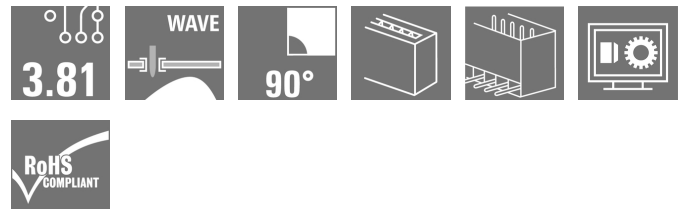


OMNIMATE Signal - series BC/SC 3.81 SC 3.81/02/90G 3.2SN BK BX

Weidmüller Interface GmbH & Co. KG
Klingenbergstraße 26
D-32758 Detmold
Germany
Fon: +49 5231 14-0
Fax: +49 5231 14-292083
www.weidmueller.com

Product image



Similar to illustration

The SC pin header has a parallel (recumbent) plugging direction in relation to the PCB. It is available in closed (G) and screw flange (F) versions.

Weidmüller's 3.81-mm-pitch (0.15 inch) plug-in connectors are compatible with the layouts of standard connectors. They support a flood-light display and offer space for labelling and coding.

General ordering data

Type	SC 3.81/02/90G 3.2SN BK BX
Order No.	1793130000
Version	PCB plug-in connector, male header, closed side, THT solder connection, 3.81 mm, Number of poles: 2, 90°, Solder pin length (l): 3.2 mm, tinned, black, Box
GTIN (EAN)	4032248227624
Qty.	50 pc(s).
Product data	IEC: 320 V / 17.5 A UL: 300 V / 10 A
Packaging	Box

Creation date May 3, 2020 3:54:35 PM CEST

**OMNIMATE Signal - series BC/SC 3.81
SC 3.81/02/90G 3.2SN BK BX**

Weidmüller Interface GmbH & Co. KG
Klingenbergstraße 26
D-32758 Detmold
Germany
Fon: +49 5231 14-0
Fax: +49 5231 14-292083
www.weidmueller.com

Technical data**Dimensions and weights**

Width	9.02 mm	Width (inches)	0.355 inch
Height	10.3 mm	Height (inches)	0.406 inch
Height of lowest version	7.1 mm	Depth	9.2 mm
Depth (inches)	0.362 inch	Net weight	0.68 g

System specifications

Product family	OMNIMATE Signal - series BC/SC 3.81	Type of connection	Board connection
Mounting onto the PCB	THT solder connection	Pitch in mm (P)	3.81 mm
Pitch in inches (P)	0.15 inch	Outgoing elbow	90°
Number of poles	2	Number of solder pins per pole	1
Solder pin length (l)	3.2 mm	Solder pin length tolerance	0 / -0,02 mm
Tolerance of solder pin position	± 0.1 mm	Solder pin dimensions	d = 1.0 mm, Octagonal
Solder pin dimensions = d tolerance	0 / -0,03 mm	Solder eyelet hole diameter (D)	1.2 mm
Solder eyelet hole diameter tolerance (D)+	0,1 mm	L1 in mm	3.81 mm
L1 in inches	0.15 inch	Number of rows	1
Pin series quantity	1	Touch-safe protection acc. to DIN VDE 57 106	Safe from finger touch
Touch-safe protection acc. to DIN VDE 0470	IP 20	Volume resistance	≤ 5mΩ
Can be coded	Yes	Plugging cycles	25
Plugging force/pole, max.	7 N	Pulling force/pole, max.	5 N

Material data

Insulating material	PA GF	Colour	black
Colour chart (similar)	RAL 9011	Insulating material group	II
Comparative Tracking Index (CTI)	≥ 550	Insulation strength	≥ 10 ⁸ Ω
UL 94 flammability rating	V-0	GWFI	960 °C
Contact material	Copper alloy	Contact surface	tinned
Storage temperature, min.	-25 °C	Storage temperature, max.	50 °C
Max. relative humidity during storage	70 %	Operating temperature, min.	-50 °C
Operating temperature, max.	120 °C	Temperature range, installation, min.	-25 °C
Temperature range, installation, max.	120 °C		

Rated data acc. to IEC

tested acc. to standard	IEC 60664-1, IEC 61984	Rated current, min. number of poles (Tu=20°C)	17.5 A
Rated current, max. number of poles (Tu=20°C)	17.5 A	Rated current, min. number of poles (Tu=40°C)	17.5 A
Rated current, max. number of poles (Tu=40°C)	16.3 A	Rated voltage for surge voltage class / pollution degree II/2	320 V
Rated voltage for surge voltage class / pollution degree III/2	160 V	Rated voltage for surge voltage class / pollution degree III/3	160 V
Rated impulse voltage for surge voltage class/ pollution degree II/2	2.5 kV	Rated impulse voltage for surge voltage class/ pollution degree III/2	2.5 kV
Rated impulse voltage for surge voltage class/ contamination degree III/3	2.5 kV	Short-time withstand current resistance	3 x 1s with 76 A

Rated data acc. to CSA

Rated voltage (Use group B / CSA)	300 V	Rated current (Use group B / CSA)	8 A
-----------------------------------	-------	-----------------------------------	-----

Data sheet

**OMNIMATE Signal - series BC/SC 3.81
SC 3.81/02/90G 3.2SN BK BX**

Weidmüller Interface GmbH & Co. KG
Klingenbergstraße 26
D-32758 Detmold
Germany
Fon: +49 5231 14-0
Fax: +49 5231 14-292083
www.weidmueller.com

Technical data

Rated data acc. to UL 1059

Institute (cURus)



Certificate No. (cURus)

E60693

Rated voltage (Use group B / UL 1059) 300 V
 Rated current (Use group B / UL 1059) 10 A
 Reference to approval values Specifications are maximum values, details - see approval certificate.

Rated voltage (Use group D / UL 1059) 300 V
 Rated current (Use group D / UL 1059) 10 A

Packing

Packaging	Box	VPE length	22 mm
VPE width	60 mm	VPE height	90 mm

Classifications

ETIM 6.0	EC002637	ETIM 7.0	EC002637
eClass 9.0	27-44-04-02	eClass 9.1	27-44-04-02
eClass 10.0	27-44-04-02	UNSPSC	30-21-18-10

Notes

- Notes
- Additional colours on request
 - Rated current related to rated cross-section & min. No. of poles.
 - Rated data refer only to the component itself. Clearance and creepage distances to other components are to be designed in accordance with the relevant application standards.
 - P on drawing = pitch

IPC conformity Conformity: The products are developed, manufactured and delivered according international recognized standards and norms and comply with the assured properties in the data sheet resp. fulfill decorative properties in accordance with IPC-A-610 "Class 2". Further claims on the products can be evaluated on request.

Approvals

Approvals



ROHS Conform

**OMNIMATE Signal - series BC/SC 3.81
SC 3.81/02/90G 3.2SN BK BX**

Weidmüller Interface GmbH & Co. KG
Klingenbergstraße 26
D-32758 Detmold
Germany
Fon: +49 5231 14-0
Fax: +49 5231 14-292083
www.weidmueller.com

Technical data**Downloads**

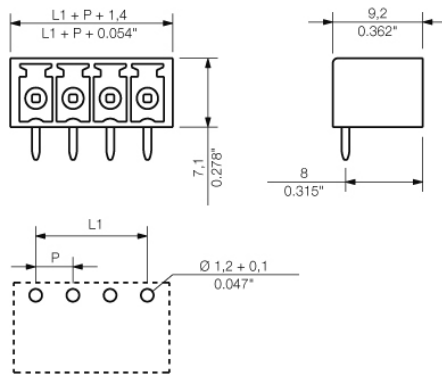
Approval/Certificate/Document of Conformity	Declaration of the Manufacturer
Brochure/Catalogue	FL DRIVES EN MB DEVICE MANUF. EN FL DRIVES DE CAT 2 PORTFOLIOGUIDE EN FL BUILDING SAFETY EN FL APPL LED LIGHTING EN FL INDUSTR.CONTROLS EN FL MACHINE SAFETY EN FL HEATING ELECTR EN FL APPL INVERTER EN FL BASE STATION EN FL ELEVATOR EN FL POWER SUPPLY EN FL 72H SAMPLE SER EN PO OMNIMATE EN
Engineering Data	EPLAN_WSCAD
Engineering Data	STEP
Product Change Notification	Change of packaging - DE Change of packaging - EN

**OMNIMATE Signal - series BC/SC 3.81
SC 3.81/02/90G 3.2SN BK BX**

Weidmüller Interface GmbH & Co. KG
 Klingenbergstraße 26
 D-32758 Detmold
 Germany
 Fon: +49 5231 14-0
 Fax: +49 5231 14-292083
 www.weidmueller.com

Drawings

Dimensional drawing



**OMNIMATE Signal - series BC/SC 3.81
SC 3.81/02/90G 3.2SN BK BX**

Weidmüller Interface GmbH & Co. KG
Klingenbergstraße 26
D-32758 Detmold
Germany
Fon: +49 5231 14-0
Fax: +49 5231 14-292083
www.weidmueller.com

Mating connector (conditionally pluggable)
BCZ 3.81/180F


Female socket connectors with clamping-yoke screw system for connecting wires.

Three wire-outlet directions are available and provide flexible connection-level design options:

- 180° wire parallel to plugging direction
- 90° wire perpendicular and above plugging direction
- 270° wire perpendicular and below plugging direction

There are three housing shapes, covering many different requirements, to choose from:

- Standard housing without flange
- Flange with screw (F)
- Flange featuring Weidmüller's patented release latch (LR) for lock-and-release latching with no strain and no tools needed.

Weidmüller's 3.81-mm-pitch (0.15 inch) plug-in connectors are compatible with the layouts of customary connectors and offer space for labelling and coding.

General ordering data

Type	BCZ 3.81/02/180F SN OR ...	Version	Product data	Packaging
Order No.	1941010000	PCB plug-in connector, female plug, 3.81 mm, Number of poles: 2,	IEC: 320 V / 17.5 A / 0.2 - 1.5 mm ²	Box
GTIN (EAN)	4032248655830	180°, Clamping yoke connection, Clamping range, max.: 1.5 mm ² ,	UL: 300 V / 10 A / AWG 28 - AWG 16	
Qty.	50 pc(s).	Box		
Type	BCZ 3.81/02/180F SN GN ...	Version	Product data	Packaging
Order No.	1793040000	PCB plug-in connector, female plug, 3.81 mm, Number of poles: 2,	IEC: 320 V / 17.5 A / 0.2 - 1.5 mm ²	Box
GTIN (EAN)	4032248227129	180°, Clamping yoke connection, Clamping range, max.: 1.5 mm ² ,	UL: 300 V / 10 A / AWG 28 - AWG 16	
Qty.	50 pc(s).	Box		
Type	BCZ 3.81/02/180F SN BK ...	Version	Product data	Packaging
Order No.	1792950000	PCB plug-in connector, female plug, 3.81 mm, Number of poles: 2,	IEC: 320 V / 17.5 A / 0.2 - 1.5 mm ²	Box
GTIN (EAN)	4032248227037	180°, Clamping yoke connection, Clamping range, max.: 1.5 mm ² ,	UL: 300 V / 10 A / AWG 28 - AWG 16	
Qty.	50 pc(s).	Box		

**OMNIMATE Signal - series BC/SC 3.81
SC 3.81/02/90G 3.2SN BK BX**

Weidmüller Interface GmbH & Co. KG
 Klingenbergstraße 26
 D-32758 Detmold
 Germany
 Fon: +49 5231 14-0
 Fax: +49 5231 14-292083
 www.weidmueller.com

Mating connector (conditionally pluggable)
BCZ 3.81/180LR


Female socket connectors with clamping-yoke screw system for connecting wires.

Three wire-outlet directions are available and provide flexible connection-level design options:

- 180° wire parallel to plugging direction
- 90° wire perpendicular and above plugging direction
- 270° wire perpendicular and below plugging direction

There are three housing shapes, covering many different requirements, to choose from:

- Standard housing without flange
- Flange with screw (F)
- Flange featuring Weidmüller's patented release latch (LR) for lock-and-release latching with no strain and no tools needed.

Weidmüller's 3.81-mm-pitch (0.15 inch) plug-in connectors are compatible with the layouts of customary connectors and offer space for labelling and coding.

General ordering data

Type	BCZ 3.81/02/180LR SN OR ...	Version	Product data	Packaging
Order No.	1941400000	PCB plug-in connector, female plug, 3.81 mm, Number of poles: 2,	IEC: 320 V / 17.5 A / 0.2 - 1.5 mm ²	Box
GTIN (EAN)	4032248698325	180°, Clamping yoke connection, Clamping range, max.: 1.5 mm ² ,	UL: 300 V / 10 A / AWG 28 - AWG 16	
Qty.	50 pc(s).	Box		
Type	BCZ 3.81/02/180LR SN GN ...	Version	Product data	Packaging
Order No.	1941590000	PCB plug-in connector, female plug, 3.81 mm, Number of poles: 2,	IEC: 320 V / 17.5 A / 0.2 - 1.5 mm ²	Box
GTIN (EAN)	4032248698516	180°, Clamping yoke connection, Clamping range, max.: 1.5 mm ² ,	UL: 300 V / 10 A / AWG 28 - AWG 16	
Qty.	50 pc(s).	Box		
Type	BCZ 3.81/02/180LR SN BK ...	Version	Product data	Packaging
Order No.	1941780000	PCB plug-in connector, female plug, 3.81 mm, Number of poles: 2,	IEC: 320 V / 17.5 A / 0.2 - 1.5 mm ²	Box
GTIN (EAN)	4032248698707	180°, Clamping yoke connection, Clamping range, max.: 1.5 mm ² ,	UL: 300 V / 10 A / AWG 28 - AWG 16	
Qty.	50 pc(s).	Box		

**OMNIMATE Signal - series BC/SC 3.81
SC 3.81/02/90G 3.2SN BK BX**

Weidmüller Interface GmbH & Co. KG
 Klingenbergstraße 26
 D-32758 Detmold
 Germany
 Fon: +49 5231 14-0
 Fax: +49 5231 14-292083
 www.weidmueller.com

Mating connector (conditionally pluggable)
BCZ 3.81/270F


Female socket connectors with clamping-yoke screw system for connecting wires.

Three wire-outlet directions are available and provide flexible connection-level design options:

- 180° wire parallel to plugging direction
- 90° wire perpendicular and above plugging direction
- 270° wire perpendicular and below plugging direction

There are three housing shapes, covering many different requirements, to choose from:

- Standard housing without flange
- Flange with screw (F)
- Flange featuring Weidmüller's patented release latch (LR) for lock-and-release latching with no strain and no tools needed.

Weidmüller's 3.81-mm-pitch (0.15 inch) plug-in connectors are compatible with the layouts of customary connectors and offer space for labelling and coding.

General ordering data

Type	BCZ 3.81/02/270F SN GN ...	Version	Product data	Packaging
Order No.	1799170000	PCB plug-in connector, female plug, 3.81 mm, Number of poles: 2,	IEC: 320 V / 17.5 A / 0.2 - 1.5 mm ²	Box
GTIN (EAN)	4032248244065	270°, Clamping yoke connection, Clamping range, max.: 1.5 mm ² ,	UL: 300 V / 10 A / AWG 28 - AWG 16	
Qty.	50 pc(s).	Box		
Type	BCZ 3.81/02/270F SN BK ...	Version	Product data	Packaging
Order No.	1799100000	PCB plug-in connector, female plug, 3.81 mm, Number of poles: 2,	IEC: 320 V / 17.5 A / 0.2 - 1.5 mm ²	Box
GTIN (EAN)	4032248243990	270°, Clamping yoke connection, Clamping range, max.: 1.5 mm ² ,	UL: 300 V / 10 A / AWG 28 - AWG 16	
Qty.	50 pc(s).	Box		
Type	BCZ 3.81/02/270F SN OR ...	Version	Product data	Packaging
Order No.	1940460000	PCB plug-in connector, female plug, 3.81 mm, Number of poles: 2,	IEC: 320 V / 17.5 A / 0.2 - 1.5 mm ²	Box
GTIN (EAN)	4032248656370	270°, Clamping yoke connection, Clamping range, max.: 1.5 mm ² ,	UL: 300 V / 10 A / AWG 28 - AWG 16	
Qty.	50 pc(s).	Box		

**OMNIMATE Signal - series BC/SC 3.81
SC 3.81/02/90G 3.2SN BK BX**

Weidmüller Interface GmbH & Co. KG
 Klingenbergstraße 26
 D-32758 Detmold
 Germany
 Fon: +49 5231 14-0
 Fax: +49 5231 14-292083
 www.weidmueller.com

Mating connector (conditionally pluggable)
BCZ 3.81/90F


Female socket connectors with clamping-yoke screw system for connecting wires.

Three wire-outlet directions are available and provide flexible connection-level design options:

- 180° wire parallel to plugging direction
- 90° wire perpendicular and above plugging direction
- 270° wire perpendicular and below plugging direction

There are three housing shapes, covering many different requirements, to choose from:

- Standard housing without flange
- Flange with screw (F)
- Flange featuring Weidmüller's patented release latch (LR) for lock-and-release latching with no strain and no tools needed.

Weidmüller's 3.81-mm-pitch (0.15 inch) plug-in connectors are compatible with the layouts of customary connectors and offer space for labelling and coding.

General ordering data

Type	BCZ 3.81/02/90F SN BK BX	Version	Product data	Packaging
Order No.	1798780000	PCB plug-in connector, female plug, 3.81 mm, Number of poles: 2,	IEC: 320 V / 17.5 A / 0.2 - 1.5 mm ²	Box
GTIN (EAN)	4032248243464	90°, Clamping yoke connection, Clamping range, max. : 1.5 mm ² , Box	UL: 300 V / 10 A / AWG 28 - AWG 16	
Qty.	50 pc(s).			
Type	BCZ 3.81/02/90F SN GN BX	Version	Product data	Packaging
Order No.	1798850000	PCB plug-in connector, female plug, 3.81 mm, Number of poles: 2,	IEC: 320 V / 17.5 A / 0.2 - 1.5 mm ²	Box
GTIN (EAN)	4032248243532	90°, Clamping yoke connection, Clamping range, max. : 1.5 mm ² , Box	UL: 300 V / 10 A / AWG 28 - AWG 16	
Qty.	50 pc(s).			
Type	BCZ 3.81/02/90F SN OR BX	Version	Product data	Packaging
Order No.	1939980000	PCB plug-in connector, female plug, 3.81 mm, Number of poles: 2,	IEC: 320 V / 17.5 A / 0.2 - 1.5 mm ²	Box
GTIN (EAN)	4032248656844	90°, Clamping yoke connection, Clamping range, max. : 1.5 mm ² , Box	UL: 300 V / 10 A / AWG 28 - AWG 16	
Qty.	50 pc(s).			

**OMNIMATE Signal - series BC/SC 3.81
SC 3.81/02/90G 3.2SN BK BX**

Weidmüller Interface GmbH & Co. KG
Klingenbergstraße 26
D-32758 Detmold
Germany
Fon: +49 5231 14-0
Fax: +49 5231 14-292083
www.weidmueller.com

Mating connector (fully pluggable)**BCZ 3.81/90**

Female socket connectors with clamping-yoke screw system for connecting wires.

Three wire-outlet directions are available and provide flexible connection-level design options:

- 180° wire parallel to plugging direction
- 90° wire perpendicular and above plugging direction
- 270° wire perpendicular and below plugging direction

There are three housing shapes, covering many different requirements, to choose from:

- Standard housing without flange
- Flange with screw (F)
- Flange featuring Weidmüller's patented release latch (LR) for lock-and-release latching with no strain and no tools needed.

Weidmüller's 3.81-mm-pitch (0.15 inch) plug-in connectors are compatible with the layouts of customary connectors and offer space for labelling and coding.

General ordering data

Type	BCZ 3.81/04/90 SN GN BX	Version	Product data	Packaging
Order No.	1798710000	PCB plug-in connector, female plug, 3.81 mm, Number of poles: 4,	IEC: 320 V / 17.5 A / 0.2 - 1.5 mm ²	Box
GTIN (EAN)	4032248243297	90°, Clamping yoke connection, Clamping range, max. : 1.5 mm ² , Box	UL: 300 V / 10 A / AWG 28 - AWG 16	
Qty.	50 pc(s).			
Type	BCZ 3.81/02/90 SN GN BX	Version	Product data	Packaging
Order No.	1798680000	PCB plug-in connector, female plug, 3.81 mm, Number of poles: 2,	IEC: 320 V / 17.5 A / 0.2 - 1.5 mm ²	Box
GTIN (EAN)	4032248243273	90°, Clamping yoke connection, Clamping range, max. : 1.5 mm ² , Box	UL: 300 V / 10 A / AWG 28 - AWG 16	
Qty.	50 pc(s).			
Type	BCZ 3.81/15/90 SN OR BX	Version	Product data	Packaging
Order No.	1939960000	PCB plug-in connector, female plug, 3.81 mm, Number of poles: 15,	IEC: 320 V / 17.5 A / 0.2 - 1.5 mm ²	Box
GTIN (EAN)	4032248656868	90°, Clamping yoke connection, Clamping range, max. : 1.5 mm ² , Box	UL: 300 V / 10 A / AWG 28 - AWG 16	
Qty.	50 pc(s).			
Type	BCZ 3.81/10/90 SN OR BX	Version	Product data	Packaging
Order No.	1939910000	PCB plug-in connector, female plug, 3.81 mm, Number of poles: 10,	IEC: 320 V / 17.5 A / 0.2 - 1.5 mm ²	Box
GTIN (EAN)	4032248656912	90°, Clamping yoke connection, Clamping range, max. : 1.5 mm ² , Box	UL: 300 V / 10 A / AWG 28 - AWG 16	
Qty.	50 pc(s).			
Type	BCZ 3.81/08/90 SN BK BX	Version	Product data	Packaging
Order No.	1798130000	PCB plug-in connector, female plug, 3.81 mm, Number of poles: 8,	IEC: 320 V / 17.5 A / 0.2 - 1.5 mm ²	Box
GTIN (EAN)	4032248241323	90°, Clamping yoke connection, Clamping range, max. : 1.5 mm ² , Box	UL: 300 V / 10 A / AWG 28 - AWG 16	
Qty.	50 pc(s).			
Type	BCZ 3.81/09/90 SN OR BX	Version	Product data	Packaging
Order No.	1939900000	PCB plug-in connector, female plug, 3.81 mm, Number of poles: 9,	IEC: 320 V / 17.5 A / 0.2 - 1.5 mm ²	Box
GTIN (EAN)	4032248656929	90°, Clamping yoke connection, Clamping range, max. : 1.5 mm ² , Box	UL: 300 V / 10 A / AWG 28 - AWG 16	
Qty.	50 pc(s).			
Type	BCZ 3.81/04/90 SN BK BX	Version	Product data	Packaging
Order No.	1798550000	PCB plug-in connector, female plug, 3.81 mm, Number of poles: 4,	IEC: 320 V / 17.5 A / 0.2 - 1.5 mm ²	Box
GTIN (EAN)	4032248243211	90°, Clamping yoke connection, Clamping range, max. : 1.5 mm ² , Box	UL: 300 V / 10 A / AWG 28 - AWG 16	
Qty.	50 pc(s).			

**OMNIMATE Signal - series BC/SC 3.81
SC 3.81/02/90G 3.2SN BK BX**

Weidmüller Interface GmbH & Co. KG
Klingenbergstraße 26
D-32758 Detmold
Germany
Fon: +49 5231 14-0
Fax: +49 5231 14-292083
www.weidmueller.com

Mating connector (fully pluggable)

Type	BCZ 3.81/05/90 SN OR BX	Version	Product data	Packaging
Order No.	1939860000	PCB plug-in connector, female plug, 3.81 mm, Number of poles: 5,	IEC: 320 V / 17.5 A / 0.2 - 1.5 mm ²	Box
GTIN (EAN)	4032248656967	90°, Clamping yoke connection, Clamping range, max. : 1.5 mm ² , Box	UL: 300 V / 10 A / AWG 28 - AWG 16	
Qty.	50 pc(s).			
Type	BCZ 3.81/03/90 SN BK BX	Version	Product data	Packaging
Order No.	1798120000	PCB plug-in connector, female plug, 3.81 mm, Number of poles: 3,	IEC: 320 V / 17.5 A / 0.2 - 1.5 mm ²	Box
GTIN (EAN)	4032248241316	90°, Clamping yoke connection, Clamping range, max. : 1.5 mm ² , Box	UL: 300 V / 10 A / AWG 28 - AWG 16	
Qty.	50 pc(s).			
Type	BCZ 3.81/02/90 SN BK BX	Version	Product data	Packaging
Order No.	1798500000	PCB plug-in connector, female plug, 3.81 mm, Number of poles: 2,	IEC: 320 V / 17.5 A / 0.2 - 1.5 mm ²	Box
GTIN (EAN)	4032248243006	90°, Clamping yoke connection, Clamping range, max. : 1.5 mm ² , Box	UL: 300 V / 10 A / AWG 28 - AWG 16	
Qty.	50 pc(s).			
Type	BCZ 3.81/04/90 SN OR BX	Version	Product data	Packaging
Order No.	1939840000	PCB plug-in connector, female plug, 3.81 mm, Number of poles: 4,	IEC: 320 V / 17.5 A / 0.2 - 1.5 mm ²	Box
GTIN (EAN)	4032248653942	90°, Clamping yoke connection, Clamping range, max. : 1.5 mm ² , Box	UL: 300 V / 10 A / AWG 28 - AWG 16	
Qty.	50 pc(s).			
Type	BCZ 3.81/07/90 SN OR BX	Version	Product data	Packaging
Order No.	1939880000	PCB plug-in connector, female plug, 3.81 mm, Number of poles: 7,	IEC: 320 V / 17.5 A / 0.2 - 1.5 mm ²	Box
GTIN (EAN)	4032248656943	90°, Clamping yoke connection, Clamping range, max. : 1.5 mm ² , Box	UL: 300 V / 10 A / AWG 28 - AWG 16	
Qty.	50 pc(s).			
Type	BCZ 3.81/06/90 SN BK BX	Version	Product data	Packaging
Order No.	1798590000	PCB plug-in connector, female plug, 3.81 mm, Number of poles: 6,	IEC: 320 V / 17.5 A / 0.2 - 1.5 mm ²	Box
GTIN (EAN)	4032248243235	90°, Clamping yoke connection, Clamping range, max. : 1.5 mm ² , Box	UL: 300 V / 10 A / AWG 28 - AWG 16	
Qty.	50 pc(s).			
Type	BCZ 3.81/10/90 SN BK BX	Version	Product data	Packaging
Order No.	1798610000	PCB plug-in connector, female plug, 3.81 mm, Number of poles: 10,	IEC: 320 V / 17.5 A / 0.2 - 1.5 mm ²	Box
GTIN (EAN)	4032248243242	90°, Clamping yoke connection, Clamping range, max. : 1.5 mm ² , Box	UL: 300 V / 10 A / AWG 28 - AWG 16	
Qty.	50 pc(s).			
Type	BCZ 3.81/13/90 SN OR BX	Version	Product data	Packaging
Order No.	1939940000	PCB plug-in connector, female plug, 3.81 mm, Number of poles: 13,	IEC: 320 V / 17.5 A / 0.2 - 1.5 mm ²	Box
GTIN (EAN)	4032248656882	90°, Clamping yoke connection, Clamping range, max. : 1.5 mm ² , Box	UL: 300 V / 10 A / AWG 28 - AWG 16	
Qty.	50 pc(s).			
Type	BCZ 3.81/08/90 SN OR BX	Version	Product data	Packaging
Order No.	1939890000	PCB plug-in connector, female plug, 3.81 mm, Number of poles: 8,	IEC: 320 V / 17.5 A / 0.2 - 1.5 mm ²	Box
GTIN (EAN)	4032248656936	90°, Clamping yoke connection, Clamping range, max. : 1.5 mm ² , Box	UL: 300 V / 10 A / AWG 28 - AWG 16	
Qty.	50 pc(s).			
Type	BCZ 3.81/07/90 SN BK BX	Version	Product data	Packaging
Order No.	1858960000	PCB plug-in connector, female plug, 3.81 mm, Number of poles: 7,	IEC: 320 V / 17.5 A / 0.2 - 1.5 mm ²	Box
GTIN (EAN)	4032248410576	90°, Clamping yoke connection, Clamping range, max. : 1.5 mm ² , Box	UL: 300 V / 10 A / AWG 28 - AWG 16	
Qty.	50 pc(s).			
Type	BCZ 3.81/16/90 SN BK BX	Version	Product data	Packaging
Order No.	1798660000	PCB plug-in connector, female plug, 3.81 mm, Number of poles: 16,	IEC: 320 V / 17.5 A / 0.2 - 1.5 mm ²	Box
GTIN (EAN)	4032248243266	90°, Clamping yoke connection, Clamping range, max. : 1.5 mm ² , Box	UL: 300 V / 10 A / AWG 28 - AWG 16	
Qty.	50 pc(s).			
Type	BCZ 3.81/11/90 SN BK BX	Version	Product data	Packaging
Order No.	1899380000	PCB plug-in connector, female plug, 3.81 mm, Number of poles: 11,	IEC: 320 V / 17.5 A / 0.2 - 1.5 mm ²	Box
GTIN (EAN)	4032248519286	90°, Clamping yoke connection, Clamping range, max. : 1.5 mm ² , Box	UL: 300 V / 10 A / AWG 28 - AWG 16	
Qty.	50 pc(s).			
Type	BCZ 3.81/05/90 SN GN BX	Version	Product data	Packaging
Order No.	1798720000	PCB plug-in connector, female plug, 3.81 mm, Number of poles: 5,	IEC: 320 V / 17.5 A / 0.2 - 1.5 mm ²	Box
GTIN (EAN)	4032248243303	90°, Clamping yoke connection, Clamping range, max. : 1.5 mm ² , Box	UL: 300 V / 10 A / AWG 28 - AWG 16	
Qty.	50 pc(s).			

Creation date May 3, 2020 3:54:35 PM CEST

**OMNIMATE Signal - series BC/SC 3.81
SC 3.81/02/90G 3.2SN BK BX**

Weidmüller Interface GmbH & Co. KG
Klingenbergstraße 26
D-32758 Detmold
Germany
Fon: +49 5231 14-0
Fax: +49 5231 14-292083
www.weidmueller.com

Mating connector (fully pluggable)

Type	BCZ 3.81/08/90 SN GN BX	Version	Product data	Packaging
Order No.	1798740000	PCB plug-in connector, female plug, 3.81 mm, Number of poles: 8,	IEC: 320 V / 17.5 A / 0.2 - 1.5 mm ²	Box
GTIN (EAN)	4032248243426	90°, Clamping yoke connection, Clamping range, max. : 1.5 mm ² , Box	UL: 300 V / 10 A / AWG 28 - AWG 16	
Qty.	50 pc(s).			
Type	BCZ 3.81/15/90 SN GN BX	Version	Product data	Packaging
Order No.	1899490000	PCB plug-in connector, female plug, 3.81 mm, Number of poles: 15,	IEC: 320 V / 17.5 A / 0.2 - 1.5 mm ²	Box
GTIN (EAN)	4032248519392	90°, Clamping yoke connection, Clamping range, max. : 1.5 mm ² , Box	UL: 300 V / 10 A / AWG 28 - AWG 16	
Qty.	50 pc(s).			
Type	BCZ 3.81/12/90 SN GN BX	Version	Product data	Packaging
Order No.	1798760000	PCB plug-in connector, female plug, 3.81 mm, Number of poles: 12,	IEC: 320 V / 17.5 A / 0.2 - 1.5 mm ²	Box
GTIN (EAN)	4032248243440	90°, Clamping yoke connection, Clamping range, max. : 1.5 mm ² , Box	UL: 300 V / 10 A / AWG 28 - AWG 16	
Qty.	50 pc(s).			
Type	BCZ 3.81/05/90 SN BK BX	Version	Product data	Packaging
Order No.	1798570000	PCB plug-in connector, female plug, 3.81 mm, Number of poles: 5,	IEC: 320 V / 17.5 A / 0.2 - 1.5 mm ²	Box
GTIN (EAN)	4032248243228	90°, Clamping yoke connection, Clamping range, max. : 1.5 mm ² , Box	UL: 300 V / 10 A / AWG 28 - AWG 16	
Qty.	50 pc(s).			
Type	BCZ 3.81/13/90 SN BK BX	Version	Product data	Packaging
Order No.	1899420000	PCB plug-in connector, female plug, 3.81 mm, Number of poles: 13,	IEC: 320 V / 17.5 A / 0.2 - 1.5 mm ²	Box
GTIN (EAN)	4032248519323	90°, Clamping yoke connection, Clamping range, max. : 1.5 mm ² , Box	UL: 300 V / 10 A / AWG 28 - AWG 16	
Qty.	50 pc(s).			
Type	BCZ 3.81/12/90 SN OR BX	Version	Product data	Packaging
Order No.	1939930000	PCB plug-in connector, female plug, 3.81 mm, Number of poles: 12,	IEC: 320 V / 17.5 A / 0.2 - 1.5 mm ²	Box
GTIN (EAN)	4032248656899	90°, Clamping yoke connection, Clamping range, max. : 1.5 mm ² , Box	UL: 300 V / 10 A / AWG 28 - AWG 16	
Qty.	50 pc(s).			
Type	BCZ 3.81/06/90 SN GN BX	Version	Product data	Packaging
Order No.	1798730000	PCB plug-in connector, female plug, 3.81 mm, Number of poles: 6,	IEC: 320 V / 17.5 A / 0.2 - 1.5 mm ²	Box
GTIN (EAN)	4032248243419	90°, Clamping yoke connection, Clamping range, max. : 1.5 mm ² , Box	UL: 300 V / 10 A / AWG 28 - AWG 16	
Qty.	50 pc(s).			
Type	BCZ 3.81/11/90 SN GN BX	Version	Product data	Packaging
Order No.	1899370000	PCB plug-in connector, female plug, 3.81 mm, Number of poles: 11,	IEC: 320 V / 17.5 A / 0.2 - 1.5 mm ²	Box
GTIN (EAN)	4032248519279	90°, Clamping yoke connection, Clamping range, max. : 1.5 mm ² , Box	UL: 300 V / 10 A / AWG 28 - AWG 16	
Qty.	50 pc(s).			
Type	BCZ 3.81/13/90 SN GN BX	Version	Product data	Packaging
Order No.	1899410000	PCB plug-in connector, female plug, 3.81 mm, Number of poles: 13,	IEC: 320 V / 17.5 A / 0.2 - 1.5 mm ²	Box
GTIN (EAN)	4032248519316	90°, Clamping yoke connection, Clamping range, max. : 1.5 mm ² , Box	UL: 300 V / 10 A / AWG 28 - AWG 16	
Qty.	50 pc(s).			
Type	BCZ 3.81/11/90 SN OR BX	Version	Product data	Packaging
Order No.	1939920000	PCB plug-in connector, female plug, 3.81 mm, Number of poles: 11,	IEC: 320 V / 17.5 A / 0.2 - 1.5 mm ²	Box
GTIN (EAN)	4032248656905	90°, Clamping yoke connection, Clamping range, max. : 1.5 mm ² , Box	UL: 300 V / 10 A / AWG 28 - AWG 16	
Qty.	50 pc(s).			
Type	BCZ 3.81/16/90 SN GN BX	Version	Product data	Packaging
Order No.	1798770000	PCB plug-in connector, female plug, 3.81 mm, Number of poles: 16,	IEC: 320 V / 17.5 A / 0.2 - 1.5 mm ²	Box
GTIN (EAN)	4032248243457	90°, Clamping yoke connection, Clamping range, max. : 1.5 mm ² , Box	UL: 300 V / 10 A / AWG 28 - AWG 16	
Qty.	50 pc(s).			
Type	BCZ 3.81/06/90 SN OR BX	Version	Product data	Packaging
Order No.	1939870000	PCB plug-in connector, female plug, 3.81 mm, Number of poles: 6,	IEC: 320 V / 17.5 A / 0.2 - 1.5 mm ²	Box
GTIN (EAN)	4032248656950	90°, Clamping yoke connection, Clamping range, max. : 1.5 mm ² , Box	UL: 300 V / 10 A / AWG 28 - AWG 16	
Qty.	50 pc(s).			
Type	BCZ 3.81/16/90 SN OR BX	Version	Product data	Packaging
Order No.	1939970000	PCB plug-in connector, female plug, 3.81 mm, Number of poles: 16,	IEC: 320 V / 17.5 A / 0.2 - 1.5 mm ²	Box
GTIN (EAN)	4032248656851	90°, Clamping yoke connection, Clamping range, max. : 1.5 mm ² , Box	UL: 300 V / 10 A / AWG 28 - AWG 16	
Qty.	50 pc(s).			

Creation date May 3, 2020 3:54:35 PM CEST

**OMNIMATE Signal - series BC/SC 3.81
SC 3.81/02/90G 3.2SN BK BX**

Weidmüller Interface GmbH & Co. KG
Klingenbergstraße 26
D-32758 Detmold
Germany
Fon: +49 5231 14-0
Fax: +49 5231 14-292083
www.weidmueller.com

Mating connector (fully pluggable)

Type	BCZ 3.81/14/90 SN OR BX	Version	Product data	Packaging
Order No.	1939950000	PCB plug-in connector, female plug, 3.81 mm, Number of poles: 14,	IEC: 320 V / 17.5 A / 0.2 - 1.5 mm ²	Box
GTIN (EAN)	4032248656875	90°, Clamping yoke connection, Clamping range, max. : 1.5 mm ² , Box	UL: 300 V / 10 A / AWG 28 - AWG 16	
Qty.	50 pc(s).			
Type	BCZ 3.81/12/90 SN BK BX	Version	Product data	Packaging
Order No.	1798630000	PCB plug-in connector, female plug, 3.81 mm, Number of poles: 12,	IEC: 320 V / 17.5 A / 0.2 - 1.5 mm ²	Box
GTIN (EAN)	4032248243259	90°, Clamping yoke connection, Clamping range, max. : 1.5 mm ² , Box	UL: 300 V / 10 A / AWG 28 - AWG 16	
Qty.	50 pc(s).			
Type	BCZ 3.81/14/90 SN BK BX	Version	Product data	Packaging
Order No.	1899460000	PCB plug-in connector, female plug, 3.81 mm, Number of poles: 14,	IEC: 320 V / 17.5 A / 0.2 - 1.5 mm ²	Box
GTIN (EAN)	4032248519361	90°, Clamping yoke connection, Clamping range, max. : 1.5 mm ² , Box	UL: 300 V / 10 A / AWG 28 - AWG 16	
Qty.	50 pc(s).			
Type	BCZ 3.81/15/90 SN BK BX	Version	Product data	Packaging
Order No.	1899500000	PCB plug-in connector, female plug, 3.81 mm, Number of poles: 15,	IEC: 320 V / 17.5 A / 0.2 - 1.5 mm ²	Box
GTIN (EAN)	4032248519408	90°, Clamping yoke connection, Clamping range, max. : 1.5 mm ² , Box	UL: 300 V / 10 A / AWG 28 - AWG 16	
Qty.	50 pc(s).			
Type	BCZ 3.81/02/90 SN OR BX	Version	Product data	Packaging
Order No.	1939820000	PCB plug-in connector, female plug, 3.81 mm, Number of poles: 2,	IEC: 320 V / 17.5 A / 0.2 - 1.5 mm ²	Box
GTIN (EAN)	4032248653966	90°, Clamping yoke connection, Clamping range, max. : 1.5 mm ² , Box	UL: 300 V / 10 A / AWG 28 - AWG 16	
Qty.	50 pc(s).			
Type	BCZ 3.81/14/90 SN GN BX	Version	Product data	Packaging
Order No.	1899450000	PCB plug-in connector, female plug, 3.81 mm, Number of poles: 14,	IEC: 320 V / 17.5 A / 0.2 - 1.5 mm ²	Box
GTIN (EAN)	4032248519354	90°, Clamping yoke connection, Clamping range, max. : 1.5 mm ² , Box	UL: 300 V / 10 A / AWG 28 - AWG 16	
Qty.	50 pc(s).			
Type	BCZ 3.81/03/90 SN OR BX	Version	Product data	Packaging
Order No.	1939830000	PCB plug-in connector, female plug, 3.81 mm, Number of poles: 3,	IEC: 320 V / 17.5 A / 0.2 - 1.5 mm ²	Box
GTIN (EAN)	4032248653959	90°, Clamping yoke connection, Clamping range, max. : 1.5 mm ² , Box	UL: 300 V / 10 A / AWG 28 - AWG 16	
Qty.	50 pc(s).			
Type	BCZ 3.81/03/90 SN GN BX	Version	Product data	Packaging
Order No.	1798690000	PCB plug-in connector, female plug, 3.81 mm, Number of poles: 3,	IEC: 320 V / 17.5 A / 0.2 - 1.5 mm ²	Box
GTIN (EAN)	4032248243280	90°, Clamping yoke connection, Clamping range, max. : 1.5 mm ² , Box	UL: 300 V / 10 A / AWG 28 - AWG 16	
Qty.	50 pc(s).			
Type	BCZ 3.81/10/90 SN GN BX	Version	Product data	Packaging
Order No.	1798750000	PCB plug-in connector, female plug, 3.81 mm, Number of poles: 10,	IEC: 320 V / 17.5 A / 0.2 - 1.5 mm ²	Box
GTIN (EAN)	4032248243433	90°, Clamping yoke connection, Clamping range, max. : 1.5 mm ² , Box	UL: 300 V / 10 A / AWG 28 - AWG 16	
Qty.	50 pc(s).			

OMNIMATE Signal - series BC/SC 3.81 SC 3.81/02/90G 3.2SN BK BX

Weidmüller Interface GmbH & Co. KG
Klingenbergstraße 26
D-32758 Detmold
Germany
Fon: +49 5231 14-0
Fax: +49 5231 14-292083
www.weidmueller.com

Mating connector (fully pluggable)

BCZ 3.81/180



Female socket connectors with clamping-yoke screw system for connecting wires.

Three wire-outlet directions are available and provide flexible connection-level design options:

- 180° wire parallel to plugging direction
- 90° wire perpendicular and above plugging direction
- 270° wire perpendicular and below plugging direction

There are three housing shapes, covering many different requirements, to choose from:

- Standard housing without flange
- Flange with screw (F)
- Flange featuring Weidmüller's patented release latch (LR) for lock-and-release latching with no strain and no tools needed.

Weidmüller's 3.81-mm-pitch (0.15 inch) plug-in connectors are compatible with the layouts of customary connectors and offer space for labelling and coding.

General ordering data

Type	BCZ 3.81/12/180 SN GN BX	Version	Product data	Packaging
Order No.	1792930000	PCB plug-in connector, female plug, 3.81 mm, Number of poles: 12,	IEC: 320 V / 17.5 A / 0.2 - 1.5 mm ²	Box
GTIN (EAN)	4032248227013	180°, Clamping yoke connection, Clamping range, max. : 1.5 mm ² ,	UL: 300 V / 10 A / AWG 28 - AWG 16	
Qty.	50 pc(s).	Box		
Type	BCZ 3.81/19/180 SN OR BX	Version	Product data	Packaging
Order No.	1940910000	PCB plug-in connector, female plug, 3.81 mm, Number of poles: 19,	IEC: 320 V / 17.5 A / 0.2 - 1.5 mm ²	Box
GTIN (EAN)	4032248655939	180°, Clamping yoke connection, Clamping range, max. : 1.5 mm ² ,	UL: 300 V / 10 A / AWG 28 - AWG 16	
Qty.	50 pc(s).	Box		
Type	BCZ 3.81/03/180 SN BK BX	Version	Product data	Packaging
Order No.	1792780000	PCB plug-in connector, female plug, 3.81 mm, Number of poles: 3,	IEC: 320 V / 17.5 A / 0.2 - 1.5 mm ²	Box
GTIN (EAN)	4032248226764	180°, Clamping yoke connection, Clamping range, max. : 1.5 mm ² ,	UL: 300 V / 10 A / AWG 28 - AWG 16	
Qty.	50 pc(s).	Box		
Type	BCZ 3.81/03/180 SN OR BX	Version	Product data	Packaging
Order No.	1940740000	PCB plug-in connector, female plug, 3.81 mm, Number of poles: 3,	IEC: 320 V / 17.5 A / 0.2 - 1.5 mm ²	Box
GTIN (EAN)	4032248656097	180°, Clamping yoke connection, Clamping range, max. : 1.5 mm ² ,	UL: 300 V / 10 A / AWG 28 - AWG 16	
Qty.	50 pc(s).	Box		
Type	BCZ 3.81/04/180 SN OR B ...	Version	Product data	Packaging
Order No.	1094960000	PCB plug-in connector, female plug, 3.81 mm, Number of poles: 4,	IEC: 320 V / 17.5 A / 0.2 - 1.5 mm ²	Box
GTIN (EAN)	4032248866854	180°, Clamping yoke connection, Clamping range, max. : 1.5 mm ² ,	UL: 300 V / 10 A / AWG 28 - AWG 16	
Qty.	50 pc(s).	Box		
Type	BCZ 3.81/05/180 SN BK BX	Version	Product data	Packaging
Order No.	1792800000	PCB plug-in connector, female plug, 3.81 mm, Number of poles: 5,	IEC: 320 V / 17.5 A / 0.2 - 1.5 mm ²	Box
GTIN (EAN)	4032248226788	180°, Clamping yoke connection, Clamping range, max. : 1.5 mm ² ,	UL: 300 V / 10 A / AWG 28 - AWG 16	
Qty.	50 pc(s).	Box		
Type	BCZ 3.81/06/180 SN OR BX	Version	Product data	Packaging
Order No.	1940770000	PCB plug-in connector, female plug, 3.81 mm, Number of poles: 6,	IEC: 320 V / 17.5 A / 0.2 - 1.5 mm ²	Box
GTIN (EAN)	4032248656066	180°, Clamping yoke connection, Clamping range, max. : 1.5 mm ² ,	UL: 300 V / 10 A / AWG 28 - AWG 16	
Qty.	50 pc(s).	Box		

OMNIMATE Signal - series BC/SC 3.81
SC 3.81/02/90G 3.2SN BK BX

Weidmüller Interface GmbH & Co. KG
 Klängenbergstraße 26
 D-32758 Detmold
 Germany
 Fon: +49 5231 14-0
 Fax: +49 5231 14-292083
 www.weidmueller.com

Mating connector (fully pluggable)

Type	BCZ 3.81/03/180 SN GN BX	Version	Product data	Packaging
Order No.	1792870000	PCB plug-in connector, female plug, 3.81 mm, Number of poles: 3,	IEC: 320 V / 17.5 A / 0.2 - 1.5 mm ²	Box
GTIN (EAN)	4032248226955	180°, Clamping yoke connection, Clamping range, max. : 1.5 mm ² ,	UL: 300 V / 10 A / AWG 28 - AWG 16	
Qty.	50 pc(s).	Box		
Type	BCZ 3.81/14/180 SN GN B ...	Version	Product data	Packaging
Order No.	1807320000	PCB plug-in connector, female plug, 3.81 mm, Number of poles: 14,	IEC: 320 V / 17.5 A / 0.2 - 1.5 mm ²	Box
GTIN (EAN)	4032248278534	180°, Clamping yoke connection, Clamping range, max. : 1.5 mm ² ,	UL: 300 V / 10 A / AWG 28 - AWG 16	
Qty.	50 pc(s).	Box		
Type	BCZ 3.81/15/180 SN OR BX	Version	Product data	Packaging
Order No.	1940860000	PCB plug-in connector, female plug, 3.81 mm, Number of poles: 15,	IEC: 320 V / 17.5 A / 0.2 - 1.5 mm ²	Box
GTIN (EAN)	4032248655977	180°, Clamping yoke connection, Clamping range, max. : 1.5 mm ² ,	UL: 300 V / 10 A / AWG 28 - AWG 16	
Qty.	50 pc(s).	Box		
Type	BCZ 3.81/07/180 SN OR BX	Version	Product data	Packaging
Order No.	1940780000	PCB plug-in connector, female plug, 3.81 mm, Number of poles: 7,	IEC: 320 V / 17.5 A / 0.2 - 1.5 mm ²	Box
GTIN (EAN)	4032248656059	180°, Clamping yoke connection, Clamping range, max. : 1.5 mm ² ,	UL: 300 V / 10 A / AWG 28 - AWG 16	
Qty.	50 pc(s).	Box		
Type	BCZ 3.81/08/180 SN BK BX	Version	Product data	Packaging
Order No.	1792820000	PCB plug-in connector, female plug, 3.81 mm, Number of poles: 8,	IEC: 320 V / 17.5 A / 0.2 - 1.5 mm ²	Box
GTIN (EAN)	4032248226801	180°, Clamping yoke connection, Clamping range, max. : 1.5 mm ² ,	UL: 300 V / 10 A / AWG 28 - AWG 16	
Qty.	50 pc(s).	Box		
Type	BCZ 3.81/10/180 SN GN BX	Version	Product data	Packaging
Order No.	1792920000	PCB plug-in connector, female plug, 3.81 mm, Number of poles: 10,	IEC: 320 V / 17.5 A / 0.2 - 1.5 mm ²	Box
GTIN (EAN)	4032248227006	180°, Clamping yoke connection, Clamping range, max. : 1.5 mm ² ,	UL: 300 V / 10 A / AWG 28 - AWG 16	
Qty.	50 pc(s).	Box		
Type	BCZ 3.81/05/180 SN GN BX	Version	Product data	Packaging
Order No.	1792890000	PCB plug-in connector, female plug, 3.81 mm, Number of poles: 5,	IEC: 320 V / 17.5 A / 0.2 - 1.5 mm ²	Box
GTIN (EAN)	4032248226979	180°, Clamping yoke connection, Clamping range, max. : 1.5 mm ² ,	UL: 300 V / 10 A / AWG 28 - AWG 16	
Qty.	50 pc(s).	Box		
Type	BCZ 3.81/08/180 SN GN B ...	Version	Product data	Packaging
Order No.	1142060000	PCB plug-in connector, female plug, 3.81 mm, Number of poles: 8,	IEC: 320 V / 17.5 A / 0.2 - 1.5 mm ²	Box
GTIN (EAN)	4032248924882	180°, Clamping yoke connection, Clamping range, max. : 1.5 mm ² ,	UL: 300 V / 10 A / AWG 28 - AWG 16	
Qty.	50 pc(s).	Box		
Type	BCZ 3.81/17/180 SN OR BX	Version	Product data	Packaging
Order No.	1940890000	PCB plug-in connector, female plug, 3.81 mm, Number of poles: 17,	IEC: 320 V / 17.5 A / 0.2 - 1.5 mm ²	Box
GTIN (EAN)	4032248655953	180°, Clamping yoke connection, Clamping range, max. : 1.5 mm ² ,	UL: 300 V / 10 A / AWG 28 - AWG 16	
Qty.	50 pc(s).	Box		
Type	BCZ 3.81/20/180 SN GN BX	Version	Product data	Packaging
Order No.	1940960000	PCB plug-in connector, female plug, 3.81 mm, Number of poles: 20,	IEC: 320 V / 17.5 A / 0.2 - 1.5 mm ²	Box
GTIN (EAN)	4032248655885	180°, Clamping yoke connection, Clamping range, max. : 1.5 mm ² ,	UL: 300 V / 10 A / AWG 28 - AWG 16	
Qty.	50 pc(s).	Box		
Type	BCZ 3.81/20/180 SN BK BX	Version	Product data	Packaging
Order No.	1941000000	PCB plug-in connector, female plug, 3.81 mm, Number of poles: 20,	IEC: 320 V / 17.5 A / 0.2 - 1.5 mm ²	Box
GTIN (EAN)	4032248655847	180°, Clamping yoke connection, Clamping range, max. : 1.5 mm ² ,	UL: 300 V / 10 A / AWG 28 - AWG 16	
Qty.	50 pc(s).	Box		
Type	BCZ 3.81/11/180 SN GN BX	Version	Product data	Packaging
Order No.	1899390000	PCB plug-in connector, female plug, 3.81 mm, Number of poles: 11,	IEC: 320 V / 17.5 A / 0.2 - 1.5 mm ²	Box
GTIN (EAN)	4032248519293	180°, Clamping yoke connection, Clamping range, max. : 1.5 mm ² ,	UL: 300 V / 10 A / AWG 28 - AWG 16	
Qty.	50 pc(s).	Box		
Type	BCZ 3.81/20/180 SN OR BX	Version	Product data	Packaging
Order No.	1940920000	PCB plug-in connector, female plug, 3.81 mm, Number of poles: 20,	IEC: 320 V / 17.5 A / 0.2 - 1.5 mm ²	Box
GTIN (EAN)	4032248655922	180°, Clamping yoke connection, Clamping range, max. : 1.5 mm ² ,	UL: 300 V / 10 A / AWG 28 - AWG 16	
Qty.	50 pc(s).	Box		

Creation date May 3, 2020 3:54:35 PM CEST

**OMNIMATE Signal - series BC/SC 3.81
SC 3.81/02/90G 3.2SN BK BX**

Weidmüller Interface GmbH & Co. KG
Klingenbergstraße 26
D-32758 Detmold
Germany
Fon: +49 5231 14-0
Fax: +49 5231 14-292083
www.weidmueller.com

Mating connector (fully pluggable)

Type	BCZ 3.81/08/180 SN GN BX	Version	Product data	Packaging
Order No.	1792910000	PCB plug-in connector, female plug, 3.81 mm, Number of poles: 8,	IEC: 320 V / 17.5 A / 0.2 - 1.5 mm ²	Box
GTIN (EAN)	4032248226993	180°, Clamping yoke connection, Clamping range, max. : 1.5 mm ² ,	UL: 300 V / 10 A / AWG 28 - AWG 16	
Qty.	50 pc(s).	Box		
Type	BCZ 3.81/08/180 SN GN B ...	Version	Product data	Packaging
Order No.	1827060000	PCB plug-in connector, female plug, 3.81 mm, Number of poles: 8,	IEC: 320 V / 17.5 A / 0.2 - 1.5 mm ²	Box
GTIN (EAN)	4032248331994	180°, Clamping yoke connection, Clamping range, max. : 1.5 mm ² ,	UL: 300 V / 10 A / AWG 28 - AWG 16	
Qty.	100 pc(s).	Box		
Type	BCZ 3.81/06/180 SN GN B ...	Version	Product data	Packaging
Order No.	1848110000	PCB plug-in connector, female plug, 3.81 mm, Number of poles: 6,	IEC: 320 V / 17.5 A / 0.2 - 1.5 mm ²	Box
GTIN (EAN)	4032248369096	180°, Clamping yoke connection, Clamping range, max. : 1.5 mm ² ,	UL: 300 V / 10 A / AWG 28 - AWG 16	
Qty.	150 pc(s).	Box		
Type	BCZ 3.81/14/180 SN OR BX	Version	Product data	Packaging
Order No.	1940850000	PCB plug-in connector, female plug, 3.81 mm, Number of poles: 14,	IEC: 320 V / 17.5 A / 0.2 - 1.5 mm ²	Box
GTIN (EAN)	4032248655984	180°, Clamping yoke connection, Clamping range, max. : 1.5 mm ² ,	UL: 300 V / 10 A / AWG 28 - AWG 16	
Qty.	50 pc(s).	Box		
Type	BCZ 3.81/19/180 SN BK BX	Version	Product data	Packaging
Order No.	1940990000	PCB plug-in connector, female plug, 3.81 mm, Number of poles: 19,	IEC: 320 V / 17.5 A / 0.2 - 1.5 mm ²	Box
GTIN (EAN)	4032248655854	180°, Clamping yoke connection, Clamping range, max. : 1.5 mm ² ,	UL: 300 V / 10 A / AWG 28 - AWG 16	
Qty.	50 pc(s).	Box		
Type	BCZ 3.81/06/180 SN GN B ...	Version	Product data	Packaging
Order No.	1848120000	PCB plug-in connector, female plug, 3.81 mm, Number of poles: 6,	IEC: 320 V / 17.5 A / 0.2 - 1.5 mm ²	Box
GTIN (EAN)	4032248369102	180°, Clamping yoke connection, Clamping range, max. : 1.5 mm ² ,	UL: 300 V / 10 A / AWG 28 - AWG 16	
Qty.	150 pc(s).	Box		
Type	BCZ 3.81/07/180 SN BK BX	Version	Product data	Packaging
Order No.	1871410000	PCB plug-in connector, female plug, 3.81 mm, Number of poles: 7,	IEC: 320 V / 17.5 A / 0.2 - 1.5 mm ²	Box
GTIN (EAN)	4032248450213	180°, Clamping yoke connection, Clamping range, max. : 1.5 mm ² ,	UL: 300 V / 10 A / AWG 28 - AWG 16	
Qty.	50 pc(s).	Box		
Type	BCZ 3.81/18/180 SN GN BX	Version	Product data	Packaging
Order No.	1940940000	PCB plug-in connector, female plug, 3.81 mm, Number of poles: 18,	IEC: 320 V / 17.5 A / 0.2 - 1.5 mm ²	Box
GTIN (EAN)	4032248655908	180°, Clamping yoke connection, Clamping range, max. : 1.5 mm ² ,	UL: 300 V / 10 A / AWG 28 - AWG 16	
Qty.	50 pc(s).	Box		
Type	BCZ 3.81/11/180 SN BK BX	Version	Product data	Packaging
Order No.	1899400000	PCB plug-in connector, female plug, 3.81 mm, Number of poles: 11,	IEC: 320 V / 17.5 A / 0.2 - 1.5 mm ²	Box
GTIN (EAN)	4032248519309	180°, Clamping yoke connection, Clamping range, max. : 1.5 mm ² ,	UL: 300 V / 10 A / AWG 28 - AWG 16	
Qty.	50 pc(s).	Box		
Type	BCZ 3.81/17/180 SN OR BX	Version	Product data	Packaging
Order No.	1940880000	PCB plug-in connector, female plug, 3.81 mm, Number of poles: 17,	IEC: 320 V / 17.5 A / 0.2 - 1.5 mm ²	Box
GTIN (EAN)		180°, Clamping yoke connection, Clamping range, max. : 1.5 mm ² ,	UL: 300 V / 10 A / AWG 28 - AWG 16	
Qty.	50 pc(s).	Box		
Type	BCZ 3.81/06/180 SN GN B ...	Version	Product data	Packaging
Order No.	1807300000	PCB plug-in connector, female plug, 3.81 mm, Number of poles: 6,	IEC: 320 V / 17.5 A / 0.2 - 1.5 mm ²	Box
GTIN (EAN)	4032248278510	180°, Clamping yoke connection, Clamping range, max. : 1.5 mm ² ,	UL: 300 V / 10 A / AWG 28 - AWG 16	
Qty.	50 pc(s).	Box		
Type	BCZ 3.81/09/180 SN GN BX	Version	Product data	Packaging
Order No.	1871380000	PCB plug-in connector, female plug, 3.81 mm, Number of poles: 9,	IEC: 320 V / 17.5 A / 0.2 - 1.5 mm ²	Box
GTIN (EAN)	4032248449989	180°, Clamping yoke connection, Clamping range, max. : 1.5 mm ² ,	UL: 300 V / 10 A / AWG 28 - AWG 16	
Qty.	50 pc(s).	Box		
Type	BCZ 3.81/05/180 SN OR BX	Version	Product data	Packaging
Order No.	1940760000	PCB plug-in connector, female plug, 3.81 mm, Number of poles: 5,	IEC: 320 V / 17.5 A / 0.2 - 1.5 mm ²	Box
GTIN (EAN)	4032248656073	180°, Clamping yoke connection, Clamping range, max. : 1.5 mm ² ,	UL: 300 V / 10 A / AWG 28 - AWG 16	
Qty.	50 pc(s).	Box		

Creation date May 3, 2020 3:54:35 PM CEST

**OMNIMATE Signal - series BC/SC 3.81
SC 3.81/02/90G 3.2SN BK BX**

Weidmüller Interface GmbH & Co. KG
Klingenbergstraße 26
D-32758 Detmold
Germany
Fon: +49 5231 14-0
Fax: +49 5231 14-292083
www.weidmueller.com

Mating connector (fully pluggable)

Type	BCZ 3.81/15/180 SN BK BX	Version	Product data	Packaging
Order No.	1899520000	PCB plug-in connector, female plug, 3.81 mm, Number of poles: 15,	IEC: 320 V / 17.5 A / 0.2 - 1.5 mm ²	Box
GTIN (EAN)	4032248519422	180°, Clamping yoke connection, Clamping range, max. : 1.5 mm ² ,	UL: 300 V / 10 A / AWG 28 - AWG 16	
Qty.	50 pc(s).	Box		
Type	BCZ 3.81/13/180 SN GN BX	Version	Product data	Packaging
Order No.	1899430000	PCB plug-in connector, female plug, 3.81 mm, Number of poles: 13,	IEC: 320 V / 17.5 A / 0.2 - 1.5 mm ²	Box
GTIN (EAN)	4032248519330	180°, Clamping yoke connection, Clamping range, max. : 1.5 mm ² ,	UL: 300 V / 10 A / AWG 28 - AWG 16	
Qty.	50 pc(s).	Box		
Type	BCZ 3.81/05/180 SN BK B ...	Version	Product data	Packaging
Order No.	1965640000	PCB plug-in connector, female plug, 3.81 mm, Number of poles: 5,	IEC: 320 V / 17.5 A / 0.2 - 1.5 mm ²	Box
GTIN (EAN)	4032248653515	180°, Clamping yoke connection, Clamping range, max. : 1.5 mm ² ,	UL: 300 V / 10 A / AWG 28 - AWG 16	
Qty.	50 pc(s).	Box		
Type	BCZ 3.81/14/180 SN GN BX	Version	Product data	Packaging
Order No.	1899470000	PCB plug-in connector, female plug, 3.81 mm, Number of poles: 14,	IEC: 320 V / 17.5 A / 0.2 - 1.5 mm ²	Box
GTIN (EAN)	4032248519378	180°, Clamping yoke connection, Clamping range, max. : 1.5 mm ² ,	UL: 300 V / 10 A / AWG 28 - AWG 16	
Qty.	50 pc(s).	Box		
Type	BCZ 3.81/06/180 SN GN B ...	Version	Product data	Packaging
Order No.	1827050000	PCB plug-in connector, female plug, 3.81 mm, Number of poles: 6,	IEC: 320 V / 17.5 A / 0.2 - 1.5 mm ²	Box
GTIN (EAN)	4032248331987	180°, Clamping yoke connection, Clamping range, max. : 1.5 mm ² ,	UL: 300 V / 10 A / AWG 28 - AWG 16	
Qty.	150 pc(s).	Box		
Type	BCZ 3.81/12/180 SN BK BX	Version	Product data	Packaging
Order No.	1792840000	PCB plug-in connector, female plug, 3.81 mm, Number of poles: 12,	IEC: 320 V / 17.5 A / 0.2 - 1.5 mm ²	Box
GTIN (EAN)	4032248226924	180°, Clamping yoke connection, Clamping range, max. : 1.5 mm ² ,	UL: 300 V / 10 A / AWG 28 - AWG 16	
Qty.	50 pc(s).	Box		
Type	BCZ 3.81/04/180 SN GN B ...	Version	Product data	Packaging
Order No.	1827030000	PCB plug-in connector, female plug, 3.81 mm, Number of poles: 4,	IEC: 320 V / 17.5 A / 0.2 - 1.5 mm ²	Box
GTIN (EAN)	4032248331963	180°, Clamping yoke connection, Clamping range, max. : 1.5 mm ² ,	UL: 300 V / 10 A / AWG 28 - AWG 16	
Qty.	180 pc(s).	Box		
Type	BCZ 3.81/18/180 SN BK BX	Version	Product data	Packaging
Order No.	1940980000	PCB plug-in connector, female plug, 3.81 mm, Number of poles: 18,	IEC: 320 V / 17.5 A / 0.2 - 1.5 mm ²	Box
GTIN (EAN)	4032248655861	180°, Clamping yoke connection, Clamping range, max. : 1.5 mm ² ,	UL: 300 V / 10 A / AWG 28 - AWG 16	
Qty.	50 pc(s).	Box		
Type	BCZ 3.81/09/180 SN OR BX	Version	Product data	Packaging
Order No.	1940800000	PCB plug-in connector, female plug, 3.81 mm, Number of poles: 9,	IEC: 320 V / 17.5 A / 0.2 - 1.5 mm ²	Box
GTIN (EAN)	4032248656035	180°, Clamping yoke connection, Clamping range, max. : 1.5 mm ² ,	UL: 300 V / 10 A / AWG 28 - AWG 16	
Qty.	50 pc(s).	Box		
Type	BCZ 3.81/04/180 SN OR B ...	Version	Product data	Packaging
Order No.	1045720000	PCB plug-in connector, female plug, 3.81 mm, Number of poles: 4,	IEC: 320 V / 17.5 A / 0.2 - 1.5 mm ²	Box
GTIN (EAN)	4032248779550	180°, Clamping yoke connection, Clamping range, max. : 1.5 mm ² ,	UL: 300 V / 10 A / AWG 28 - AWG 16	
Qty.	50 pc(s).	Box		
Type	BCZ 3.81/16/180 SN OR BX	Version	Product data	Packaging
Order No.	1940870000	PCB plug-in connector, female plug, 3.81 mm, Number of poles: 16,	IEC: 320 V / 17.5 A / 0.2 - 1.5 mm ²	Box
GTIN (EAN)	4032248655960	180°, Clamping yoke connection, Clamping range, max. : 1.5 mm ² ,	UL: 300 V / 10 A / AWG 28 - AWG 16	
Qty.	50 pc(s).	Box		
Type	BCZ 3.81/08/180 SN GN B ...	Version	Product data	Packaging
Order No.	1848130000	PCB plug-in connector, female plug, 3.81 mm, Number of poles: 8,	IEC: 320 V / 17.5 A / 0.2 - 1.5 mm ²	Box
GTIN (EAN)	4032248369416	180°, Clamping yoke connection, Clamping range, max. : 1.5 mm ² ,	UL: 300 V / 10 A / AWG 28 - AWG 16	
Qty.	100 pc(s).	Box		
Type	BCZ 3.81/11/180 SN OR BX	Version	Product data	Packaging
Order No.	1940820000	PCB plug-in connector, female plug, 3.81 mm, Number of poles: 11,	IEC: 320 V / 17.5 A / 0.2 - 1.5 mm ²	Box
GTIN (EAN)	4032248656011	180°, Clamping yoke connection, Clamping range, max. : 1.5 mm ² ,	UL: 300 V / 10 A / AWG 28 - AWG 16	
Qty.	50 pc(s).	Box		

Creation date May 3, 2020 3:54:35 PM CEST

OMNIMATE Signal - series BC/SC 3.81
SC 3.81/02/90G 3.2SN BK BX

Weidmüller Interface GmbH & Co. KG
 Klängenbergstraße 26
 D-32758 Detmold
 Germany
 Fon: +49 5231 14-0
 Fax: +49 5231 14-292083
 www.weidmueller.com

Mating connector (fully pluggable)

Type	BCZ 3.81/04/180 SN OR B ...	Version	Product data	Packaging
Order No.	1094950000	PCB plug-in connector, female plug, 3.81 mm, Number of poles: 4,	IEC: 320 V / 17.5 A / 0.2 - 1.5 mm ²	Box
GTIN (EAN)	4032248867738	180°, Clamping yoke connection, Clamping range, max. : 1.5 mm ² ,	UL: 300 V / 10 A / AWG 28 - AWG 16	
Qty.	50 pc(s).	Box		
Type	BCZ 3.81/04/180 SN GN BX	Version	Product data	Packaging
Order No.	1792880000	PCB plug-in connector, female plug, 3.81 mm, Number of poles: 4,	IEC: 320 V / 17.5 A / 0.2 - 1.5 mm ²	Box
GTIN (EAN)	4032248226962	180°, Clamping yoke connection, Clamping range, max. : 1.5 mm ² ,	UL: 300 V / 10 A / AWG 28 - AWG 16	
Qty.	50 pc(s).	Box		
Type	BCZ 3.81/15/180 SN GN BX	Version	Product data	Packaging
Order No.	1899510000	PCB plug-in connector, female plug, 3.81 mm, Number of poles: 15,	IEC: 320 V / 17.5 A / 0.2 - 1.5 mm ²	Box
GTIN (EAN)	4032248519415	180°, Clamping yoke connection, Clamping range, max. : 1.5 mm ² ,	UL: 300 V / 10 A / AWG 28 - AWG 16	
Qty.	50 pc(s).	Box		
Type	BCZ 3.81/06/180 SN BK BX	Version	Product data	Packaging
Order No.	1792810000	PCB plug-in connector, female plug, 3.81 mm, Number of poles: 6,	IEC: 320 V / 17.5 A / 0.2 - 1.5 mm ²	Box
GTIN (EAN)	4032248226795	180°, Clamping yoke connection, Clamping range, max. : 1.5 mm ² ,	UL: 300 V / 10 A / AWG 28 - AWG 16	
Qty.	50 pc(s).	Box		
Type	BCZ 3.81/04/180 SN GN B ...	Version	Product data	Packaging
Order No.	1807270000	PCB plug-in connector, female plug, 3.81 mm, Number of poles: 4,	IEC: 320 V / 17.5 A / 0.2 - 1.5 mm ²	Box
GTIN (EAN)	4032248278282	180°, Clamping yoke connection, Clamping range, max. : 1.5 mm ² ,	UL: 300 V / 10 A / AWG 28 - AWG 16	
Qty.	180 pc(s).	Box		
Type	BCZ 3.81/07/180 SN GN BX	Version	Product data	Packaging
Order No.	1871400000	PCB plug-in connector, female plug, 3.81 mm, Number of poles: 7,	IEC: 320 V / 17.5 A / 0.2 - 1.5 mm ²	Box
GTIN (EAN)	4032248450008	180°, Clamping yoke connection, Clamping range, max. : 1.5 mm ² ,	UL: 300 V / 10 A / AWG 28 - AWG 16	
Qty.	50 pc(s).	Box		
Type	BCZ 3.81/06/180 SN GN BX	Version	Product data	Packaging
Order No.	1792900000	PCB plug-in connector, female plug, 3.81 mm, Number of poles: 6,	IEC: 320 V / 17.5 A / 0.2 - 1.5 mm ²	Box
GTIN (EAN)	4032248226986	180°, Clamping yoke connection, Clamping range, max. : 1.5 mm ² ,	UL: 300 V / 10 A / AWG 28 - AWG 16	
Qty.	50 pc(s).	Box		
Type	BCZ 3.81/04/180 SN OR BX	Version	Product data	Packaging
Order No.	1940750000	PCB plug-in connector, female plug, 3.81 mm, Number of poles: 4,	IEC: 320 V / 17.5 A / 0.2 - 1.5 mm ²	Box
GTIN (EAN)	4032248656080	180°, Clamping yoke connection, Clamping range, max. : 1.5 mm ² ,	UL: 300 V / 10 A / AWG 28 - AWG 16	
Qty.	50 pc(s).	Box		
Type	BCZ 3.81/02/180 SN OR BX	Version	Product data	Packaging
Order No.	1940730000	PCB plug-in connector, female plug, 3.81 mm, Number of poles: 2,	IEC: 320 V / 17.5 A / 0.2 - 1.5 mm ²	Box
GTIN (EAN)	4032248656103	180°, Clamping yoke connection, Clamping range, max. : 1.5 mm ² ,	UL: 300 V / 10 A / AWG 28 - AWG 16	
Qty.	50 pc(s).	Box		
Type	BCZ 3.81/10/180 SN GN P ...	Version	Product data	Packaging
Order No.	1816370000	PCB plug-in connector, female plug, 3.81 mm, Number of poles: 10,	IEC: 320 V / 17.5 A / 0.2 - 1.5 mm ²	Box
GTIN (EAN)	4032248306992	180°, Clamping yoke connection, Clamping range, max. : 1.5 mm ² ,	UL: 300 V / 10 A / AWG 28 - AWG 16	
Qty.	50 pc(s).	Box		
Type	BCZ 3.81/13/180 SN BK BX	Version	Product data	Packaging
Order No.	1899440000	PCB plug-in connector, female plug, 3.81 mm, Number of poles: 13,	IEC: 320 V / 17.5 A / 0.2 - 1.5 mm ²	Box
GTIN (EAN)	4032248519347	180°, Clamping yoke connection, Clamping range, max. : 1.5 mm ² ,	UL: 300 V / 10 A / AWG 28 - AWG 16	
Qty.	50 pc(s).	Box		
Type	BCZ 3.81/04/180 SN GN B ...	Version	Product data	Packaging
Order No.	1859170000	PCB plug-in connector, female plug, 3.81 mm, Number of poles: 4,	IEC: 320 V / 17.5 A / 0.2 - 1.5 mm ²	Box
GTIN (EAN)	4032248411610	180°, Clamping yoke connection, Clamping range, max. : 1.5 mm ² ,	UL: 300 V / 10 A / AWG 28 - AWG 16	
Qty.	180 pc(s).	Box		
Type	BCZ 3.81/08/180 SN TGY ...	Version	Product data	Packaging
Order No.	1021630000	PCB plug-in connector, female plug, 3.81 mm, Number of poles: 8,	IEC: 320 V / 17.5 A / 0.2 - 1.5 mm ²	Box
GTIN (EAN)	4032248775927	180°, Clamping yoke connection, Clamping range, max. : 1.5 mm ² ,	UL: 300 V / 10 A / AWG 28 - AWG 16	
Qty.	50 pc(s).	Box		

Creation date May 3, 2020 3:54:35 PM CEST

**OMNIMATE Signal - series BC/SC 3.81
SC 3.81/02/90G 3.2SN BK BX**

Weidmüller Interface GmbH & Co. KG
Klingenbergstraße 26
D-32758 Detmold
Germany
Fon: +49 5231 14-0
Fax: +49 5231 14-292083
www.weidmueller.com

Mating connector (fully pluggable)

Type	BCZ 3.81/02/180 SN BK BX	Version	Product data	Packaging
Order No.	1792770000	PCB plug-in connector, female plug, 3.81 mm, Number of poles: 2,	IEC: 320 V / 17.5 A / 0.2 - 1.5 mm ²	Box
GTIN (EAN)	4032248226757	180°, Clamping yoke connection, Clamping range, max. : 1.5 mm ² ,	UL: 300 V / 10 A / AWG 28 - AWG 16	
Qty.	50 pc(s).	Box		
Type	BCZ 3.81/08/180 SN OR BX	Version	Product data	Packaging
Order No.	1940790000	PCB plug-in connector, female plug, 3.81 mm, Number of poles: 8,	IEC: 320 V / 17.5 A / 0.2 - 1.5 mm ²	Box
GTIN (EAN)	4032248656042	180°, Clamping yoke connection, Clamping range, max. : 1.5 mm ² ,	UL: 300 V / 10 A / AWG 28 - AWG 16	
Qty.	50 pc(s).	Box		
Type	BCZ 3.81/04/180 SN BK B ...	Version	Product data	Packaging
Order No.	1077880000	PCB plug-in connector, female plug, 3.81 mm, Number of poles: 4,	IEC: 320 V / 17.5 A / 0.2 - 1.5 mm ²	Box
GTIN (EAN)	4032248837519	180°, Clamping yoke connection, Clamping range, max. : 1.5 mm ² ,	UL: 300 V / 10 A / AWG 28 - AWG 16	
Qty.	50 pc(s).	Box		
Type	BCZ 3.81/08/180 SN TGY ...	Version	Product data	Packaging
Order No.	1021640000	PCB plug-in connector, female plug, 3.81 mm, Number of poles: 8,	IEC: 320 V / 17.5 A / 0.2 - 1.5 mm ²	Box
GTIN (EAN)	4032248775910	180°, Clamping yoke connection, Clamping range, max. : 1.5 mm ² ,	UL: 300 V / 10 A / AWG 28 - AWG 16	
Qty.	50 pc(s).	Box		
Type	BCZ 3.81/18/180 SN OR BX	Version	Product data	Packaging
Order No.	1940900000	PCB plug-in connector, female plug, 3.81 mm, Number of poles: 18,	IEC: 320 V / 17.5 A / 0.2 - 1.5 mm ²	Box
GTIN (EAN)	4032248655946	180°, Clamping yoke connection, Clamping range, max. : 1.5 mm ² ,	UL: 300 V / 10 A / AWG 28 - AWG 16	
Qty.	50 pc(s).	Box		
Type	BCZ 3.81/19/180 SN GN BX	Version	Product data	Packaging
Order No.	1940950000	PCB plug-in connector, female plug, 3.81 mm, Number of poles: 19,	IEC: 320 V / 17.5 A / 0.2 - 1.5 mm ²	Box
GTIN (EAN)	4032248655892	180°, Clamping yoke connection, Clamping range, max. : 1.5 mm ² ,	UL: 300 V / 10 A / AWG 28 - AWG 16	
Qty.	50 pc(s).	Box		
Type	BCZ 3.81/02/180 SN GN BX	Version	Product data	Packaging
Order No.	1792860000	PCB plug-in connector, female plug, 3.81 mm, Number of poles: 2,	IEC: 320 V / 17.5 A / 0.2 - 1.5 mm ²	Box
GTIN (EAN)	4032248226948	180°, Clamping yoke connection, Clamping range, max. : 1.5 mm ² ,	UL: 300 V / 10 A / AWG 28 - AWG 16	
Qty.	50 pc(s).	Box		
Type	BCZ 3.81/12/180 SN OR BX	Version	Product data	Packaging
Order No.	1940830000	PCB plug-in connector, female plug, 3.81 mm, Number of poles: 12,	IEC: 320 V / 17.5 A / 0.2 - 1.5 mm ²	Box
GTIN (EAN)	4032248656004	180°, Clamping yoke connection, Clamping range, max. : 1.5 mm ² ,	UL: 300 V / 10 A / AWG 28 - AWG 16	
Qty.	50 pc(s).	Box		
Type	BCZ 3.81/17/180 SN BK BX	Version	Product data	Packaging
Order No.	1940970000	PCB plug-in connector, female plug, 3.81 mm, Number of poles: 17,	IEC: 320 V / 17.5 A / 0.2 - 1.5 mm ²	Box
GTIN (EAN)	4032248655878	180°, Clamping yoke connection, Clamping range, max. : 1.5 mm ² ,	UL: 300 V / 10 A / AWG 28 - AWG 16	
Qty.	50 pc(s).	Box		
Type	BCZ 3.81/14/180 SN BK BX	Version	Product data	Packaging
Order No.	1899480000	PCB plug-in connector, female plug, 3.81 mm, Number of poles: 14,	IEC: 320 V / 17.5 A / 0.2 - 1.5 mm ²	Box
GTIN (EAN)	4032248519385	180°, Clamping yoke connection, Clamping range, max. : 1.5 mm ² ,	UL: 300 V / 10 A / AWG 28 - AWG 16	
Qty.	50 pc(s).	Box		
Type	BCZ 3.81/10/180 SN OR BX	Version	Product data	Packaging
Order No.	1940810000	PCB plug-in connector, female plug, 3.81 mm, Number of poles: 10,	IEC: 320 V / 17.5 A / 0.2 - 1.5 mm ²	Box
GTIN (EAN)	4032248656028	180°, Clamping yoke connection, Clamping range, max. : 1.5 mm ² ,	UL: 300 V / 10 A / AWG 28 - AWG 16	
Qty.	50 pc(s).	Box		
Type	BCZ 3.81/05/180 SN GN B ...	Version	Product data	Packaging
Order No.	1142050000	PCB plug-in connector, female plug, 3.81 mm, Number of poles: 5,	IEC: 320 V / 17.5 A / 0.2 - 1.5 mm ²	Box
GTIN (EAN)	4032248924943	180°, Clamping yoke connection, Clamping range, max. : 1.5 mm ² ,	UL: 300 V / 10 A / AWG 28 - AWG 16	
Qty.	50 pc(s).	Box		
Type	BCZ 3.81/04/180 SN BK BX	Version	Product data	Packaging
Order No.	1792790000	PCB plug-in connector, female plug, 3.81 mm, Number of poles: 4,	IEC: 320 V / 17.5 A / 0.2 - 1.5 mm ²	Box
GTIN (EAN)	4032248226771	180°, Clamping yoke connection, Clamping range, max. : 1.5 mm ² ,	UL: 300 V / 10 A / AWG 28 - AWG 16	
Qty.	50 pc(s).	Box		

Creation date May 3, 2020 3:54:35 PM CEST

**OMNIMATE Signal - series BC/SC 3.81
SC 3.81/02/90G 3.2SN BK BX**

Weidmüller Interface GmbH & Co. KG
Klingenbergstraße 26
D-32758 Detmold
Germany
Fon: +49 5231 14-0
Fax: +49 5231 14-292083
www.weidmueller.com

Mating connector (fully pluggable)

Type	BCZ 3.81/16/180 SN GN BX	Version	Product data	Packaging
Order No.	1792940000	PCB plug-in connector, female plug, 3.81 mm, Number of poles: 16,	IEC: 320 V / 17.5 A / 0.2 - 1.5 mm ²	Box
GTIN (EAN)	4032248227020	180°, Clamping yoke connection, Clamping range, max. : 1.5 mm ² ,	UL: 300 V / 10 A / AWG 28 - AWG 16	
Qty.	50 pc(s).	Box		
Type	BCZ 3.81/03/180 SN GN B ...	Version	Product data	Packaging
Order No.	1880200000	PCB plug-in connector, female plug, 3.81 mm, Number of poles: 3,	IEC: 320 V / 17.5 A / 0.2 - 1.5 mm ²	Box
GTIN (EAN)	4032248479177	180°, Clamping yoke connection, Clamping range, max. : 1.5 mm ² ,	UL: 300 V / 10 A / AWG 28 - AWG 16	
Qty.	200 pc(s).	Box		
Type	BCZ 3.81/17/180 SN GN BX	Version	Product data	Packaging
Order No.	1940930000	PCB plug-in connector, female plug, 3.81 mm, Number of poles: 17,	IEC: 320 V / 17.5 A / 0.2 - 1.5 mm ²	Box
GTIN (EAN)	4032248655915	180°, Clamping yoke connection, Clamping range, max. : 1.5 mm ² ,	UL: 300 V / 10 A / AWG 28 - AWG 16	
Qty.	50 pc(s).	Box		
Type	BCZ 3.81/03/180 SN GN B ...	Version	Product data	Packaging
Order No.	1807260000	PCB plug-in connector, female plug, 3.81 mm, Number of poles: 3,	IEC: 320 V / 17.5 A / 0.2 - 1.5 mm ²	Box
GTIN (EAN)	4032248278275	180°, Clamping yoke connection, Clamping range, max. : 1.5 mm ² ,	UL: 300 V / 10 A / AWG 28 - AWG 16	
Qty.	50 pc(s).	Box		
Type	BCZ 3.81/13/180 SN OR BX	Version	Product data	Packaging
Order No.	1940840000	PCB plug-in connector, female plug, 3.81 mm, Number of poles: 13,	IEC: 320 V / 17.5 A / 0.2 - 1.5 mm ²	Box
GTIN (EAN)	4032248655991	180°, Clamping yoke connection, Clamping range, max. : 1.5 mm ² ,	UL: 300 V / 10 A / AWG 28 - AWG 16	
Qty.	50 pc(s).	Box		
Type	BCZ 3.81/10/180 SN BK BX	Version	Product data	Packaging
Order No.	1792830000	PCB plug-in connector, female plug, 3.81 mm, Number of poles: 10,	IEC: 320 V / 17.5 A / 0.2 - 1.5 mm ²	Box
GTIN (EAN)	4032248226917	180°, Clamping yoke connection, Clamping range, max. : 1.5 mm ² ,	UL: 300 V / 10 A / AWG 28 - AWG 16	
Qty.	50 pc(s).	Box		
Type	BCZ 3.81/06/180 SN GN B ...	Version	Product data	Packaging
Order No.	1827040000	PCB plug-in connector, female plug, 3.81 mm, Number of poles: 6,	IEC: 320 V / 17.5 A / 0.2 - 1.5 mm ²	Box
GTIN (EAN)	4032248331970	180°, Clamping yoke connection, Clamping range, max. : 1.5 mm ² ,	UL: 300 V / 10 A / AWG 28 - AWG 16	
Qty.	150 pc(s).	Box		
Type	BCZ 3.81/16/180 SN BK BX	Version	Product data	Packaging
Order No.	1792850000	PCB plug-in connector, female plug, 3.81 mm, Number of poles: 16,	IEC: 320 V / 17.5 A / 0.2 - 1.5 mm ²	Box
GTIN (EAN)	4032248226931	180°, Clamping yoke connection, Clamping range, max. : 1.5 mm ² ,	UL: 300 V / 10 A / AWG 28 - AWG 16	
Qty.	50 pc(s).	Box		

**OMNIMATE Signal - series BC/SC 3.81
SC 3.81/02/90G 3.2SN BK BX**

Weidmüller Interface GmbH & Co. KG
 Klingenbergstraße 26
 D-32758 Detmold
 Germany
 Fon: +49 5231 14-0
 Fax: +49 5231 14-292083
 www.weidmueller.com

Mating connector (fully pluggable)**BCZ 3.81/180ZE**

Female socket connectors with clamping-yoke screw system for connecting wires.

Three wire-outlet directions are available and provide flexible connection-level design options:

- 180° wire parallel to plugging direction
- 90° wire perpendicular and above plugging direction
- 270° wire perpendicular and below plugging direction

There are three housing shapes, covering many different requirements, to choose from:

- Standard housing without flange
- Flange with screw (F)
- Flange featuring Weidmüller's patented release latch (LR) for lock-and-release latching with no strain and no tools needed.

Weidmüller's 3.81-mm-pitch (0.15 inch) plug-in connectors are compatible with the layouts of customary connectors and offer space for labelling and coding.

General ordering data

Type	BCZ 3.81/09/180ZE SN OR ...	Version	Product data	Packaging
Order No.	1236320000	PCB plug-in connector, female plug, 3.81 mm, Number of poles: 9,	IEC: 320 V / 17.5 A / 0.2 - 1.5 mm ²	Box
GTIN (EAN)	4050118021691	180°, Clamping yoke connection, Clamping range, max. : 1.5 mm ² ,	UL: 300 V / 10 A / AWG 28 - AWG 16	
Qty.	50 pc(s).	Box		
Type	BCZ 3.81/18/180ZE SN OR ...	Version	Product data	Packaging
Order No.	1236430000	PCB plug-in connector, female plug, 3.81 mm, Number of poles: 18,	IEC: 320 V / 17.5 A / 0.2 - 1.5 mm ²	Box
GTIN (EAN)	4050118021776	180°, Clamping yoke connection, Clamping range, max. : 1.5 mm ² ,	UL: 300 V / 10 A / AWG 28 - AWG 16	
Qty.	50 pc(s).	Box		
Type	BCZ 3.81/07/180ZE SN BK ...	Version	Product data	Packaging
Order No.	1071970000	PCB plug-in connector, female plug, 3.81 mm, Number of poles: 7,	IEC: 320 V / 17.5 A / 0.2 - 1.5 mm ²	Box
GTIN (EAN)	4032248830428	180°, Clamping yoke connection, Clamping range, max. : 1.5 mm ² ,	UL: 300 V / 10 A / AWG 28 - AWG 16	
Qty.	50 pc(s).	Box		
Type	BCZ 3.81/19/180ZE SN BK ...	Version	Product data	Packaging
Order No.	1072110000	PCB plug-in connector, female plug, 3.81 mm, Number of poles: 19,	IEC: 320 V / 17.5 A / 0.2 - 1.5 mm ²	Box
GTIN (EAN)	4032248830534	180°, Clamping yoke connection, Clamping range, max. : 1.5 mm ² ,	UL: 300 V / 10 A / AWG 28 - AWG 16	
Qty.	50 pc(s).	Box		
Type	BCZ 3.81/10/180ZE SN BK ...	Version	Product data	Packaging
Order No.	1072010000	PCB plug-in connector, female plug, 3.81 mm, Number of poles: 10,	IEC: 320 V / 17.5 A / 0.2 - 1.5 mm ²	Box
GTIN (EAN)	4032248830442	180°, Clamping yoke connection, Clamping range, max. : 1.5 mm ² ,	UL: 300 V / 10 A / AWG 28 - AWG 16	
Qty.	50 pc(s).	Box		
Type	BCZ 3.81/13/180ZE SN BK ...	Version	Product data	Packaging
Order No.	1072040000	PCB plug-in connector, female plug, 3.81 mm, Number of poles: 13,	IEC: 320 V / 17.5 A / 0.2 - 1.5 mm ²	Box
GTIN (EAN)	4032248830473	180°, Clamping yoke connection, Clamping range, max. : 1.5 mm ² ,	UL: 300 V / 10 A / AWG 28 - AWG 16	
Qty.	50 pc(s).	Box		
Type	BCZ 3.81/17/180ZE SN BK ...	Version	Product data	Packaging
Order No.	1072080000	PCB plug-in connector, female plug, 3.81 mm, Number of poles: 17,	IEC: 320 V / 17.5 A / 0.2 - 1.5 mm ²	Box
GTIN (EAN)	4032248830510	180°, Clamping yoke connection, Clamping range, max. : 1.5 mm ² ,	UL: 300 V / 10 A / AWG 28 - AWG 16	
Qty.	50 pc(s).	Box		

**OMNIMATE Signal - series BC/SC 3.81
SC 3.81/02/90G 3.2SN BK BX**

Weidmüller Interface GmbH & Co. KG
Klingenbergstraße 26
D-32758 Detmold
Germany
Fon: +49 5231 14-0
Fax: +49 5231 14-292083
www.weidmueller.com

Mating connector (fully pluggable)

Type	BCZ 3.81/20/180ZE SN OR ...	Version	Product data	Packaging
Order No.	1236470000	PCB plug-in connector, female plug, 3.81 mm, Number of poles: 20,	IEC: 320 V / 17.5 A / 0.2 - 1.5 mm ²	Box
GTIN (EAN)	4050118021752	180°, Clamping yoke connection, Clamping range, max. : 1.5 mm ² ,	UL: 300 V / 10 A / AWG 28 - AWG 16	
Qty.	50 pc(s).	Box		
Type	BCZ 3.81/06/180ZE SN BK ...	Version	Product data	Packaging
Order No.	1071960000	PCB plug-in connector, female plug, 3.81 mm, Number of poles: 6,	IEC: 320 V / 17.5 A / 0.2 - 1.5 mm ²	Box
GTIN (EAN)	4032248830411	180°, Clamping yoke connection, Clamping range, max. : 1.5 mm ² ,	UL: 300 V / 10 A / AWG 28 - AWG 16	
Qty.	50 pc(s).	Box		
Type	BCZ 3.81/16/180ZE SN OR ...	Version	Product data	Packaging
Order No.	1236410000	PCB plug-in connector, female plug, 3.81 mm, Number of poles: 16,	IEC: 320 V / 17.5 A / 0.2 - 1.5 mm ²	Box
GTIN (EAN)	4050118021455	180°, Clamping yoke connection, Clamping range, max. : 1.5 mm ² ,	UL: 300 V / 10 A / AWG 28 - AWG 16	
Qty.	50 pc(s).	Box		
Type	BCZ 3.81/15/180ZE SN OR ...	Version	Product data	Packaging
Order No.	1236400000	PCB plug-in connector, female plug, 3.81 mm, Number of poles: 15,	IEC: 320 V / 17.5 A / 0.2 - 1.5 mm ²	Box
GTIN (EAN)	4050118021622	180°, Clamping yoke connection, Clamping range, max. : 1.5 mm ² ,	UL: 300 V / 10 A / AWG 28 - AWG 16	
Qty.	50 pc(s).	Box		
Type	BCZ 3.81/08/180ZE SN OR ...	Version	Product data	Packaging
Order No.	1236300000	PCB plug-in connector, female plug, 3.81 mm, Number of poles: 8,	IEC: 320 V / 17.5 A / 0.2 - 1.5 mm ²	Box
GTIN (EAN)	4050118021639	180°, Clamping yoke connection, Clamping range, max. : 1.5 mm ² ,	UL: 300 V / 10 A / AWG 28 - AWG 16	
Qty.	50 pc(s).	Box		
Type	BCZ 3.81/17/180ZE SN OR ...	Version	Product data	Packaging
Order No.	1236420000	PCB plug-in connector, female plug, 3.81 mm, Number of poles: 17,	IEC: 320 V / 17.5 A / 0.2 - 1.5 mm ²	Box
GTIN (EAN)	4050118021479	180°, Clamping yoke connection, Clamping range, max. : 1.5 mm ² ,	UL: 300 V / 10 A / AWG 28 - AWG 16	
Qty.	50 pc(s).	Box		
Type	BCZ 3.81/13/180ZE SN OR ...	Version	Product data	Packaging
Order No.	1236380000	PCB plug-in connector, female plug, 3.81 mm, Number of poles: 13,	IEC: 320 V / 17.5 A / 0.2 - 1.5 mm ²	Box
GTIN (EAN)	4050118021738	180°, Clamping yoke connection, Clamping range, max. : 1.5 mm ² ,	UL: 300 V / 10 A / AWG 28 - AWG 16	
Qty.	50 pc(s).	Box		
Type	BCZ 3.81/11/180ZE SN OR ...	Version	Product data	Packaging
Order No.	1236340000	PCB plug-in connector, female plug, 3.81 mm, Number of poles: 11,	IEC: 320 V / 17.5 A / 0.2 - 1.5 mm ²	Box
GTIN (EAN)	4050118021448	180°, Clamping yoke connection, Clamping range, max. : 1.5 mm ² ,	UL: 300 V / 10 A / AWG 28 - AWG 16	
Qty.	50 pc(s).	Box		
Type	BCZ 3.81/12/180ZE SN OR ...	Version	Product data	Packaging
Order No.	1236370000	PCB plug-in connector, female plug, 3.81 mm, Number of poles: 12,	IEC: 320 V / 17.5 A / 0.2 - 1.5 mm ²	Box
GTIN (EAN)	4050118021585	180°, Clamping yoke connection, Clamping range, max. : 1.5 mm ² ,	UL: 300 V / 10 A / AWG 28 - AWG 16	
Qty.	50 pc(s).	Box		
Type	BCZ 3.81/05/180ZE SN BK ...	Version	Product data	Packaging
Order No.	1071950000	PCB plug-in connector, female plug, 3.81 mm, Number of poles: 5,	IEC: 320 V / 17.5 A / 0.2 - 1.5 mm ²	Box
GTIN (EAN)	4032248830404	180°, Clamping yoke connection, Clamping range, max. : 1.5 mm ² ,	UL: 300 V / 10 A / AWG 28 - AWG 16	
Qty.	50 pc(s).	Box		
Type	BCZ 3.81/14/180ZE SN OR ...	Version	Product data	Packaging
Order No.	1236390000	PCB plug-in connector, female plug, 3.81 mm, Number of poles: 14,	IEC: 320 V / 17.5 A / 0.2 - 1.5 mm ²	Box
GTIN (EAN)	4050118021493	180°, Clamping yoke connection, Clamping range, max. : 1.5 mm ² ,	UL: 300 V / 10 A / AWG 28 - AWG 16	
Qty.	50 pc(s).	Box		
Type	BCZ 3.81/06/180ZE SN OR ...	Version	Product data	Packaging
Order No.	1236280000	PCB plug-in connector, female plug, 3.81 mm, Number of poles: 6,	IEC: 320 V / 17.5 A / 0.2 - 1.5 mm ²	Box
GTIN (EAN)	4050118021592	180°, Clamping yoke connection, Clamping range, max. : 1.5 mm ² ,	UL: 300 V / 10 A / AWG 28 - AWG 16	
Qty.	50 pc(s).	Box		
Type	BCZ 3.81/18/180ZE SN BK ...	Version	Product data	Packaging
Order No.	1072090000	PCB plug-in connector, female plug, 3.81 mm, Number of poles: 18,	IEC: 320 V / 17.5 A / 0.2 - 1.5 mm ²	Box
GTIN (EAN)	4032248830527	180°, Clamping yoke connection, Clamping range, max. : 1.5 mm ² ,	UL: 300 V / 10 A / AWG 28 - AWG 16	
Qty.	50 pc(s).	Box		

Creation date May 3, 2020 3:54:35 PM CEST

OMNIMATE Signal - series BC/SC 3.81 SC 3.81/02/90G 3.2SN BK BX

Weidmüller Interface GmbH & Co. KG
Klingenbergstraße 26
D-32758 Detmold
Germany
Fon: +49 5231 14-0
Fax: +49 5231 14-292083
www.weidmueller.com

Mating connector (fully pluggable)

Type	BCZ 3.81/08/180ZE SN BK ...	Version	Product data	Packaging
Order No.	1941970000	PCB plug-in connector, female plug, 3.81 mm, Number of poles: 8,	IEC: 320 V / 17.5 A / 0.2 - 1.5 mm ²	Box
GTIN (EAN)	4032248698783	180°, Clamping yoke connection, Clamping range, max. : 1.5 mm ² ,	UL: 300 V / 10 A / AWG 28 - AWG 16	
Qty.	50 pc(s).	Box		
Type	BCZ 3.81/09/180ZE SN BK ...	Version	Product data	Packaging
Order No.	1071980000	PCB plug-in connector, female plug, 3.81 mm, Number of poles: 9,	IEC: 320 V / 17.5 A / 0.2 - 1.5 mm ²	Box
GTIN (EAN)	4032248830435	180°, Clamping yoke connection, Clamping range, max. : 1.5 mm ² ,	UL: 300 V / 10 A / AWG 28 - AWG 16	
Qty.	50 pc(s).	Box		
Type	BCZ 3.81/11/180ZE SN BK ...	Version	Product data	Packaging
Order No.	1072020000	PCB plug-in connector, female plug, 3.81 mm, Number of poles: 11,	IEC: 320 V / 17.5 A / 0.2 - 1.5 mm ²	Box
GTIN (EAN)	4032248830459	180°, Clamping yoke connection, Clamping range, max. : 1.5 mm ² ,	UL: 300 V / 10 A / AWG 28 - AWG 16	
Qty.	50 pc(s).	Box		
Type	BCZ 3.81/10/180ZE SN OR ...	Version	Product data	Packaging
Order No.	1236330000	PCB plug-in connector, female plug, 3.81 mm, Number of poles: 10,	IEC: 320 V / 17.5 A / 0.2 - 1.5 mm ²	Box
GTIN (EAN)	4050118021677	180°, Clamping yoke connection, Clamping range, max. : 1.5 mm ² ,	UL: 300 V / 10 A / AWG 28 - AWG 16	
Qty.	50 pc(s).	Box		
Type	BCZ 3.81/05/180ZE SN OR ...	Version	Product data	Packaging
Order No.	1236270000	PCB plug-in connector, female plug, 3.81 mm, Number of poles: 5,	IEC: 320 V / 17.5 A / 0.2 - 1.5 mm ²	Box
GTIN (EAN)	4050118021653	180°, Clamping yoke connection, Clamping range, max. : 1.5 mm ² ,	UL: 300 V / 10 A / AWG 28 - AWG 16	
Qty.	50 pc(s).	Box		
Type	BCZ 3.81/12/180ZE SN BK ...	Version	Product data	Packaging
Order No.	1072030000	PCB plug-in connector, female plug, 3.81 mm, Number of poles: 12,	IEC: 320 V / 17.5 A / 0.2 - 1.5 mm ²	Box
GTIN (EAN)	4032248830466	180°, Clamping yoke connection, Clamping range, max. : 1.5 mm ² ,	UL: 300 V / 10 A / AWG 28 - AWG 16	
Qty.	50 pc(s).	Box		
Type	BCZ 3.81/16/180ZE SN BK ...	Version	Product data	Packaging
Order No.	1072070000	PCB plug-in connector, female plug, 3.81 mm, Number of poles: 16,	IEC: 320 V / 17.5 A / 0.2 - 1.5 mm ²	Box
GTIN (EAN)	4032248830503	180°, Clamping yoke connection, Clamping range, max. : 1.5 mm ² ,	UL: 300 V / 10 A / AWG 28 - AWG 16	
Qty.	50 pc(s).	Box		
Type	BCZ 3.81/14/180ZE SN BK ...	Version	Product data	Packaging
Order No.	1072050000	PCB plug-in connector, female plug, 3.81 mm, Number of poles: 14,	IEC: 320 V / 17.5 A / 0.2 - 1.5 mm ²	Box
GTIN (EAN)	4032248830480	180°, Clamping yoke connection, Clamping range, max. : 1.5 mm ² ,	UL: 300 V / 10 A / AWG 28 - AWG 16	
Qty.	50 pc(s).	Box		
Type	BCZ 3.81/04/180ZE SN OR ...	Version	Product data	Packaging
Order No.	1236260000	PCB plug-in connector, female plug, 3.81 mm, Number of poles: 4,	IEC: 320 V / 17.5 A / 0.2 - 1.5 mm ²	Box
GTIN (EAN)	4050118021295	180°, Clamping yoke connection, Clamping range, max. : 1.5 mm ² ,	UL: 300 V / 10 A / AWG 28 - AWG 16	
Qty.	50 pc(s).	Box		
Type	BCZ 3.81/07/180ZE SN OR ...	Version	Product data	Packaging
Order No.	1236290000	PCB plug-in connector, female plug, 3.81 mm, Number of poles: 7,	IEC: 320 V / 17.5 A / 0.2 - 1.5 mm ²	Box
GTIN (EAN)	4050118021578	180°, Clamping yoke connection, Clamping range, max. : 1.5 mm ² ,	UL: 300 V / 10 A / AWG 28 - AWG 16	
Qty.	50 pc(s).	Box		
Type	BCZ 3.81/19/180ZE SN OR ...	Version	Product data	Packaging
Order No.	1236440000	PCB plug-in connector, female plug, 3.81 mm, Number of poles: 19,	IEC: 320 V / 17.5 A / 0.2 - 1.5 mm ²	Box
GTIN (EAN)	4050118021721	180°, Clamping yoke connection, Clamping range, max. : 1.5 mm ² ,	UL: 300 V / 10 A / AWG 28 - AWG 16	
Qty.	50 pc(s).	Box		
Type	BCZ 3.81/15/180ZE SN BK ...	Version	Product data	Packaging
Order No.	1072060000	PCB plug-in connector, female plug, 3.81 mm, Number of poles: 15,	IEC: 320 V / 17.5 A / 0.2 - 1.5 mm ²	Box
GTIN (EAN)	4032248830497	180°, Clamping yoke connection, Clamping range, max. : 1.5 mm ² ,	UL: 300 V / 10 A / AWG 28 - AWG 16	
Qty.	50 pc(s).	Box		
Type	BCZ 3.81/20/180ZE SN BK ...	Version	Product data	Packaging
Order No.	1072120000	PCB plug-in connector, female plug, 3.81 mm, Number of poles: 20,	IEC: 320 V / 17.5 A / 0.2 - 1.5 mm ²	Box
GTIN (EAN)	4032248830541	180°, Clamping yoke connection, Clamping range, max. : 1.5 mm ² ,	UL: 300 V / 10 A / AWG 28 - AWG 16	
Qty.	50 pc(s).	Box		

Creation date May 3, 2020 3:54:35 PM CEST

**OMNIMATE Signal - series BC/SC 3.81
SC 3.81/02/90G 3.2SN BK BX**

Weidmüller Interface GmbH & Co. KG
Klingenbergstraße 26
D-32758 Detmold
Germany
Fon: +49 5231 14-0
Fax: +49 5231 14-292083
www.weidmueller.com

Mating connector (fully pluggable)

Type	BCZ 3.81/04/180ZE SN BK ...	Version	Product data	Packaging
Order No.	1231130000	PCB plug-in connector, female plug, 3.81 mm, Number of poles: 4,	IEC: 320 V / 17.5 A / 0.2 - 1.5 mm ²	Box
GTIN (EAN)	4050118014457	180°, Clamping yoke connection, Clamping range, max.: 1.5 mm ² ,	UL: 300 V / 10 A / AWG 28 - AWG 16	
Qty.	50 pc(s).	Box		

BCL-SMT 3.81/180


The inverted BCL-SMT socket block for the PCB offers three significant advantages:

- The BCL-SMT offers touch-safe security on the PCB which makes it ideal for live, current-carrying outputs.
- The BCL-SMT widens the range of applications with board-to-board connections between component assemblies.
- The BCL-SMT is reflow-compatible and can be seamlessly integrated into the automatic assembly and soldering process.

Two outlet directions give you a choice of position and thus more design flexibility.

- 180° standing
- 90° recumbent

Two housing variants are available for the BCL-SMT:

- Without flange
- With inverted solder flange ("LFI", with nut)
 - Fastened to PCB without additional screw
 - Fastened with screw to the SCZ FI

Weidmüller's 3.81-mm-pitch (0.15 inch) plug-in connectors are compatible with the layouts of customary connectors and offer space for labelling and coding.

General ordering data

Type	BCL-SMT 3.81/02/180 1.5 ...	Version	Product data	Packaging
Order No.	1976490000	PCB plug-in connector, female header, closed side, THT/THR solder	IEC: 320 V / 17.5 A	Box
GTIN (EAN)	4032248678983	connection, 3.81 mm, Number of poles: 2, 180°, Solder pin length (l):	UL: 300 V / 10 A	
Qty.	50 pc(s).	1.5 mm, tinned, black, Box		

**OMNIMATE Signal - series BC/SC 3.81
SC 3.81/02/90G 3.2SN BK BX**

Weidmüller Interface GmbH & Co. KG
Klingenbergstraße 26
D-32758 Detmold
Germany
Fon: +49 5231 14-0
Fax: +49 5231 14-292083
www.weidmueller.com

Mating connector (fully pluggable)**BCZ 3.81/270**

Female socket connectors with clamping-yoke screw system for connecting wires.

Three wire-outlet directions are available and provide flexible connection-level design options:

- 180° wire parallel to plugging direction
- 90° wire perpendicular and above plugging direction
- 270° wire perpendicular and below plugging direction

There are three housing shapes, covering many different requirements, to choose from:

- Standard housing without flange
- Flange with screw (F)
- Flange featuring Weidmüller's patented release latch (LR) for lock-and-release latching with no strain and no tools needed.

Weidmüller's 3.81-mm-pitch (0.15 inch) plug-in connectors are compatible with the layouts of customary connectors and offer space for labelling and coding.

General ordering data

Type	BCZ 3.81/12/270 SN OR BX	Version	Product data	Packaging
Order No.	1940290000	PCB plug-in connector, female plug, 3.81 mm, Number of poles: 12,	IEC: 320 V / 17.5 A / 0.2 - 1.5 mm ²	Box
GTIN (EAN)	4032248656547	270°, Clamping yoke connection, Clamping range, max. : 1.5 mm ² ,	UL: 300 V / 10 A / AWG 28 - AWG 16	
Qty.	50 pc(s).	Box		
Type	BCZ 3.81/07/270 SN BK BX	Version	Product data	Packaging
Order No.	1940400000	PCB plug-in connector, female plug, 3.81 mm, Number of poles: 7,	IEC: 320 V / 17.5 A / 0.2 - 1.5 mm ²	Box
GTIN (EAN)	4032248656431	270°, Clamping yoke connection, Clamping range, max. : 1.5 mm ² ,	UL: 300 V / 10 A / AWG 28 - AWG 16	
Qty.	50 pc(s).	Box		
Type	BCZ 3.81/06/270 SN OR BX	Version	Product data	Packaging
Order No.	1940230000	PCB plug-in connector, female plug, 3.81 mm, Number of poles: 6,	IEC: 320 V / 17.5 A / 0.2 - 1.5 mm ²	Box
GTIN (EAN)	4032248656608	270°, Clamping yoke connection, Clamping range, max. : 1.5 mm ² ,	UL: 300 V / 10 A / AWG 28 - AWG 16	
Qty.	50 pc(s).	Box		
Type	BCZ 3.81/09/270 SN BK BX	Version	Product data	Packaging
Order No.	1940410000	PCB plug-in connector, female plug, 3.81 mm, Number of poles: 9,	IEC: 320 V / 17.5 A / 0.2 - 1.5 mm ²	Box
GTIN (EAN)	4032248656424	270°, Clamping yoke connection, Clamping range, max. : 1.5 mm ² ,	UL: 300 V / 10 A / AWG 28 - AWG 16	
Qty.	50 pc(s).	Box		
Type	BCZ 3.81/12/270 SN BK BX	Version	Product data	Packaging
Order No.	1798990000	PCB plug-in connector, female plug, 3.81 mm, Number of poles: 12,	IEC: 320 V / 17.5 A / 0.2 - 1.5 mm ²	Box
GTIN (EAN)	4032248243778	270°, Clamping yoke connection, Clamping range, max. : 1.5 mm ² ,	UL: 300 V / 10 A / AWG 28 - AWG 16	
Qty.	50 pc(s).	Box		
Type	BCZ 3.81/13/270 SN OR BX	Version	Product data	Packaging
Order No.	1940300000	PCB plug-in connector, female plug, 3.81 mm, Number of poles: 13,	IEC: 320 V / 17.5 A / 0.2 - 1.5 mm ²	Box
GTIN (EAN)	4032248656530	270°, Clamping yoke connection, Clamping range, max. : 1.5 mm ² ,	UL: 300 V / 10 A / AWG 28 - AWG 16	
Qty.	50 pc(s).	Box		
Type	BCZ 3.81/05/270 SN OR BX	Version	Product data	Packaging
Order No.	1940220000	PCB plug-in connector, female plug, 3.81 mm, Number of poles: 5,	IEC: 320 V / 17.5 A / 0.2 - 1.5 mm ²	Box
GTIN (EAN)	4032248656615	270°, Clamping yoke connection, Clamping range, max. : 1.5 mm ² ,	UL: 300 V / 10 A / AWG 28 - AWG 16	
Qty.	50 pc(s).	Box		

**OMNIMATE Signal - series BC/SC 3.81
SC 3.81/02/90G 3.2SN BK BX**

Weidmüller Interface GmbH & Co. KG
 Klängenbergstraße 26
 D-32758 Detmold
 Germany
 Fon: +49 5231 14-0
 Fax: +49 5231 14-292083
 www.weidmueller.com

Mating connector (fully pluggable)

Type	BCZ 3.81/16/270 SN OR BX	Version	Product data	Packaging
Order No.	1940330000	PCB plug-in connector, female plug, 3.81 mm, Number of poles: 16,	IEC: 320 V / 17.5 A / 0.2 - 1.5 mm ²	Box
GTIN (EAN)	4032248656509	270°, Clamping yoke connection, Clamping range, max. : 1.5 mm ² ,	UL: 300 V / 10 A / AWG 28 - AWG 16	
Qty.	50 pc(s).	Box		
Type	BCZ 3.81/14/270 SN GN BX	Version	Product data	Packaging
Order No.	1940380000	PCB plug-in connector, female plug, 3.81 mm, Number of poles: 14,	IEC: 320 V / 17.5 A / 0.2 - 1.5 mm ²	Box
GTIN (EAN)	4032248656455	270°, Clamping yoke connection, Clamping range, max. : 1.5 mm ² ,	UL: 300 V / 10 A / AWG 28 - AWG 16	
Qty.	50 pc(s).	Box		
Type	BCZ 3.81/06/270 SN BK BX	Version	Product data	Packaging
Order No.	1798970000	PCB plug-in connector, female plug, 3.81 mm, Number of poles: 6,	IEC: 320 V / 17.5 A / 0.2 - 1.5 mm ²	Box
GTIN (EAN)	4032248243754	270°, Clamping yoke connection, Clamping range, max. : 1.5 mm ² ,	UL: 300 V / 10 A / AWG 28 - AWG 16	
Qty.	50 pc(s).	Box		
Type	BCZ 3.81/14/270 SN OR BX	Version	Product data	Packaging
Order No.	1940310000	PCB plug-in connector, female plug, 3.81 mm, Number of poles: 14,	IEC: 320 V / 17.5 A / 0.2 - 1.5 mm ²	Box
GTIN (EAN)	4032248656523	270°, Clamping yoke connection, Clamping range, max. : 1.5 mm ² ,	UL: 300 V / 10 A / AWG 28 - AWG 16	
Qty.	50 pc(s).	Box		
Type	BCZ 3.81/10/270 SN GN BX	Version	Product data	Packaging
Order No.	1799070000	PCB plug-in connector, female plug, 3.81 mm, Number of poles: 10,	IEC: 320 V / 17.5 A / 0.2 - 1.5 mm ²	Box
GTIN (EAN)	4032248243969	270°, Clamping yoke connection, Clamping range, max. : 1.5 mm ² ,	UL: 300 V / 10 A / AWG 28 - AWG 16	
Qty.	50 pc(s).	Box		
Type	BCZ 3.81/03/270 SN GN BX	Version	Product data	Packaging
Order No.	1799020000	PCB plug-in connector, female plug, 3.81 mm, Number of poles: 3,	IEC: 320 V / 17.5 A / 0.2 - 1.5 mm ²	Box
GTIN (EAN)	4032248243914	270°, Clamping yoke connection, Clamping range, max. : 1.5 mm ² ,	UL: 300 V / 10 A / AWG 28 - AWG 16	
Qty.	50 pc(s).	Box		
Type	BCZ 3.81/04/270 SN OR BX	Version	Product data	Packaging
Order No.	1940210000	PCB plug-in connector, female plug, 3.81 mm, Number of poles: 4,	IEC: 320 V / 17.5 A / 0.2 - 1.5 mm ²	Box
GTIN (EAN)	4032248656622	270°, Clamping yoke connection, Clamping range, max. : 1.5 mm ² ,	UL: 300 V / 10 A / AWG 28 - AWG 16	
Qty.	50 pc(s).	Box		
Type	BCZ 3.81/03/270 SN BK BX	Version	Product data	Packaging
Order No.	1798160000	PCB plug-in connector, female plug, 3.81 mm, Number of poles: 3,	IEC: 320 V / 17.5 A / 0.2 - 1.5 mm ²	Box
GTIN (EAN)	4032248241354	270°, Clamping yoke connection, Clamping range, max. : 1.5 mm ² ,	UL: 300 V / 10 A / AWG 28 - AWG 16	
Qty.	50 pc(s).	Box		
Type	BCZ 3.81/02/270 SN BK BX	Version	Product data	Packaging
Order No.	1798940000	PCB plug-in connector, female plug, 3.81 mm, Number of poles: 2,	IEC: 320 V / 17.5 A / 0.2 - 1.5 mm ²	Box
GTIN (EAN)	4032248243723	270°, Clamping yoke connection, Clamping range, max. : 1.5 mm ² ,	UL: 300 V / 10 A / AWG 28 - AWG 16	
Qty.	50 pc(s).	Box		
Type	BCZ 3.81/15/270 SN GN BX	Version	Product data	Packaging
Order No.	1940390000	PCB plug-in connector, female plug, 3.81 mm, Number of poles: 15,	IEC: 320 V / 17.5 A / 0.2 - 1.5 mm ²	Box
GTIN (EAN)	4032248656448	270°, Clamping yoke connection, Clamping range, max. : 1.5 mm ² ,	UL: 300 V / 10 A / AWG 28 - AWG 16	
Qty.	50 pc(s).	Box		
Type	BCZ 3.81/16/270 SN BK BX	Version	Product data	Packaging
Order No.	1799000000	PCB plug-in connector, female plug, 3.81 mm, Number of poles: 16,	IEC: 320 V / 17.5 A / 0.2 - 1.5 mm ²	Box
GTIN (EAN)	4032248243792	270°, Clamping yoke connection, Clamping range, max. : 1.5 mm ² ,	UL: 300 V / 10 A / AWG 28 - AWG 16	
Qty.	50 pc(s).	Box		
Type	BCZ 3.81/08/270 SN OR BX	Version	Product data	Packaging
Order No.	1940250000	PCB plug-in connector, female plug, 3.81 mm, Number of poles: 8,	IEC: 320 V / 17.5 A / 0.2 - 1.5 mm ²	Box
GTIN (EAN)	4032248656585	270°, Clamping yoke connection, Clamping range, max. : 1.5 mm ² ,	UL: 300 V / 10 A / AWG 28 - AWG 16	
Qty.	50 pc(s).	Box		
Type	BCZ 3.81/05/270 SN GN BX	Version	Product data	Packaging
Order No.	1799040000	PCB plug-in connector, female plug, 3.81 mm, Number of poles: 5,	IEC: 320 V / 17.5 A / 0.2 - 1.5 mm ²	Box
GTIN (EAN)	4032248243938	270°, Clamping yoke connection, Clamping range, max. : 1.5 mm ² ,	UL: 300 V / 10 A / AWG 28 - AWG 16	
Qty.	50 pc(s).	Box		

Creation date May 3, 2020 3:54:35 PM CEST

**OMNIMATE Signal - series BC/SC 3.81
SC 3.81/02/90G 3.2SN BK BX**

Weidmüller Interface GmbH & Co. KG
Klingenbergstraße 26
D-32758 Detmold
Germany
Fon: +49 5231 14-0
Fax: +49 5231 14-292083
www.weidmueller.com

Mating connector (fully pluggable)

Type	BCZ 3.81/09/270 SN OR BX	Version	Product data	Packaging
Order No.	1940260000	PCB plug-in connector, female plug, 3.81 mm, Number of poles: 9,	IEC: 320 V / 17.5 A / 0.2 - 1.5 mm ²	Box
GTIN (EAN)	4032248656578	270°, Clamping yoke connection, Clamping range, max. : 1.5 mm ² ,	UL: 300 V / 10 A / AWG 28 - AWG 16	
Qty.	50 pc(s).	Box		
Type	BCZ 3.81/07/270 SN GN BX	Version	Product data	Packaging
Order No.	1940340000	PCB plug-in connector, female plug, 3.81 mm, Number of poles: 7,	IEC: 320 V / 17.5 A / 0.2 - 1.5 mm ²	Box
GTIN (EAN)	4032248656493	270°, Clamping yoke connection, Clamping range, max. : 1.5 mm ² ,	UL: 300 V / 10 A / AWG 28 - AWG 16	
Qty.	50 pc(s).	Box		
Type	BCZ 3.81/15/270 SN BK BX	Version	Product data	Packaging
Order No.	1940450000	PCB plug-in connector, female plug, 3.81 mm, Number of poles: 15,	IEC: 320 V / 17.5 A / 0.2 - 1.5 mm ²	Box
GTIN (EAN)	4032248656387	270°, Clamping yoke connection, Clamping range, max. : 1.5 mm ² ,	UL: 300 V / 10 A / AWG 28 - AWG 16	
Qty.	50 pc(s).	Box		
Type	BCZ 3.81/02/270 SN GN BX	Version	Product data	Packaging
Order No.	1799010000	PCB plug-in connector, female plug, 3.81 mm, Number of poles: 2,	IEC: 320 V / 17.5 A / 0.2 - 1.5 mm ²	Box
GTIN (EAN)	4032248243808	270°, Clamping yoke connection, Clamping range, max. : 1.5 mm ² ,	UL: 300 V / 10 A / AWG 28 - AWG 16	
Qty.	50 pc(s).	Box		
Type	BCZ 3.81/03/270 SN OR BX	Version	Product data	Packaging
Order No.	1940200000	PCB plug-in connector, female plug, 3.81 mm, Number of poles: 3,	IEC: 320 V / 17.5 A / 0.2 - 1.5 mm ²	Box
GTIN (EAN)	4032248656639	270°, Clamping yoke connection, Clamping range, max. : 1.5 mm ² ,	UL: 300 V / 10 A / AWG 28 - AWG 16	
Qty.	50 pc(s).	Box		
Type	BCZ 3.81/10/270 SN OR BX	Version	Product data	Packaging
Order No.	1940270000	PCB plug-in connector, female plug, 3.81 mm, Number of poles: 10,	IEC: 320 V / 17.5 A / 0.2 - 1.5 mm ²	Box
GTIN (EAN)	4032248656561	270°, Clamping yoke connection, Clamping range, max. : 1.5 mm ² ,	UL: 300 V / 10 A / AWG 28 - AWG 16	
Qty.	50 pc(s).	Box		
Type	BCZ 3.81/08/270 SN GN BX	Version	Product data	Packaging
Order No.	1799060000	PCB plug-in connector, female plug, 3.81 mm, Number of poles: 8,	IEC: 320 V / 17.5 A / 0.2 - 1.5 mm ²	Box
GTIN (EAN)	4032248243952	270°, Clamping yoke connection, Clamping range, max. : 1.5 mm ² ,	UL: 300 V / 10 A / AWG 28 - AWG 16	
Qty.	50 pc(s).	Box		
Type	BCZ 3.81/16/270 SN GN BX	Version	Product data	Packaging
Order No.	1799090000	PCB plug-in connector, female plug, 3.81 mm, Number of poles: 16,	IEC: 320 V / 17.5 A / 0.2 - 1.5 mm ²	Box
GTIN (EAN)	4032248243983	270°, Clamping yoke connection, Clamping range, max. : 1.5 mm ² ,	UL: 300 V / 10 A / AWG 28 - AWG 16	
Qty.	50 pc(s).	Box		
Type	BCZ 3.81/07/270 SN OR BX	Version	Product data	Packaging
Order No.	1940240000	PCB plug-in connector, female plug, 3.81 mm, Number of poles: 7,	IEC: 320 V / 17.5 A / 0.2 - 1.5 mm ²	Box
GTIN (EAN)	4032248656592	270°, Clamping yoke connection, Clamping range, max. : 1.5 mm ² ,	UL: 300 V / 10 A / AWG 28 - AWG 16	
Qty.	50 pc(s).	Box		
Type	BCZ 3.81/15/270 SN OR BX	Version	Product data	Packaging
Order No.	1940320000	PCB plug-in connector, female plug, 3.81 mm, Number of poles: 15,	IEC: 320 V / 17.5 A / 0.2 - 1.5 mm ²	Box
GTIN (EAN)	4032248656516	270°, Clamping yoke connection, Clamping range, max. : 1.5 mm ² ,	UL: 300 V / 10 A / AWG 28 - AWG 16	
Qty.	50 pc(s).	Box		
Type	BCZ 3.81/09/270 SN GN BX	Version	Product data	Packaging
Order No.	1940350000	PCB plug-in connector, female plug, 3.81 mm, Number of poles: 9,	IEC: 320 V / 17.5 A / 0.2 - 1.5 mm ²	Box
GTIN (EAN)	4032248656486	270°, Clamping yoke connection, Clamping range, max. : 1.5 mm ² ,	UL: 300 V / 10 A / AWG 28 - AWG 16	
Qty.	50 pc(s).	Box		
Type	BCZ 3.81/02/270 SN OR BX	Version	Product data	Packaging
Order No.	1940190000	PCB plug-in connector, female plug, 3.81 mm, Number of poles: 2,	IEC: 320 V / 17.5 A / 0.2 - 1.5 mm ²	Box
GTIN (EAN)	4032248656646	270°, Clamping yoke connection, Clamping range, max. : 1.5 mm ² ,	UL: 300 V / 10 A / AWG 28 - AWG 16	
Qty.	50 pc(s).	Box		
Type	BCZ 3.81/13/270 SN GN BX	Version	Product data	Packaging
Order No.	1940370000	PCB plug-in connector, female plug, 3.81 mm, Number of poles: 13,	IEC: 320 V / 17.5 A / 0.2 - 1.5 mm ²	Box
GTIN (EAN)	4032248656462	270°, Clamping yoke connection, Clamping range, max. : 1.5 mm ² ,	UL: 300 V / 10 A / AWG 28 - AWG 16	
Qty.	50 pc(s).	Box		

Creation date May 3, 2020 3:54:35 PM CEST

**OMNIMATE Signal - series BC/SC 3.81
SC 3.81/02/90G 3.2SN BK BX**

Weidmüller Interface GmbH & Co. KG
Klingenbergstraße 26
D-32758 Detmold
Germany
Fon: +49 5231 14-0
Fax: +49 5231 14-292083
www.weidmueller.com

Mating connector (fully pluggable)

Type	BCZ 3.81/11/270 SN GN BX	Version	Product data	Packaging
Order No.	1940360000	PCB plug-in connector, female plug, 3.81 mm, Number of poles: 11,	IEC: 320 V / 17.5 A / 0.2 - 1.5 mm ²	Box
GTIN (EAN)	4032248656479	270°, Clamping yoke connection, Clamping range, max. : 1.5 mm ² ,	UL: 300 V / 10 A / AWG 28 - AWG 16	
Qty.	50 pc(s).	Box		
Type	BCZ 3.81/04/270 SN BK BX	Version	Product data	Packaging
Order No.	1798950000	PCB plug-in connector, female plug, 3.81 mm, Number of poles: 4,	IEC: 320 V / 17.5 A / 0.2 - 1.5 mm ²	Box
GTIN (EAN)	4032248243730	270°, Clamping yoke connection, Clamping range, max. : 1.5 mm ² ,	UL: 300 V / 10 A / AWG 28 - AWG 16	
Qty.	50 pc(s).	Box		
Type	BCZ 3.81/05/270 SN BK BX	Version	Product data	Packaging
Order No.	1798960000	PCB plug-in connector, female plug, 3.81 mm, Number of poles: 5,	IEC: 320 V / 17.5 A / 0.2 - 1.5 mm ²	Box
GTIN (EAN)	4032248243747	270°, Clamping yoke connection, Clamping range, max. : 1.5 mm ² ,	UL: 300 V / 10 A / AWG 28 - AWG 16	
Qty.	50 pc(s).	Box		
Type	BCZ 3.81/11/270 SN BK BX	Version	Product data	Packaging
Order No.	1940420000	PCB plug-in connector, female plug, 3.81 mm, Number of poles: 11,	IEC: 320 V / 17.5 A / 0.2 - 1.5 mm ²	Box
GTIN (EAN)	4032248656417	270°, Clamping yoke connection, Clamping range, max. : 1.5 mm ² ,	UL: 300 V / 10 A / AWG 28 - AWG 16	
Qty.	50 pc(s).	Box		
Type	BCZ 3.81/10/270 SN BK BX	Version	Product data	Packaging
Order No.	1798980000	PCB plug-in connector, female plug, 3.81 mm, Number of poles: 10,	IEC: 320 V / 17.5 A / 0.2 - 1.5 mm ²	Box
GTIN (EAN)	4032248243761	270°, Clamping yoke connection, Clamping range, max. : 1.5 mm ² ,	UL: 300 V / 10 A / AWG 28 - AWG 16	
Qty.	50 pc(s).	Box		
Type	BCZ 3.81/13/270 SN BK BX	Version	Product data	Packaging
Order No.	1940430000	PCB plug-in connector, female plug, 3.81 mm, Number of poles: 13,	IEC: 320 V / 17.5 A / 0.2 - 1.5 mm ²	Box
GTIN (EAN)	4032248656400	270°, Clamping yoke connection, Clamping range, max. : 1.5 mm ² ,	UL: 300 V / 10 A / AWG 28 - AWG 16	
Qty.	50 pc(s).	Box		
Type	BCZ 3.81/08/270 SN BK BX	Version	Product data	Packaging
Order No.	1798170000	PCB plug-in connector, female plug, 3.81 mm, Number of poles: 8,	IEC: 320 V / 17.5 A / 0.2 - 1.5 mm ²	Box
GTIN (EAN)	4032248241361	270°, Clamping yoke connection, Clamping range, max. : 1.5 mm ² ,	UL: 300 V / 10 A / AWG 28 - AWG 16	
Qty.	50 pc(s).	Box		
Type	BCZ 3.81/14/270 SN BK BX	Version	Product data	Packaging
Order No.	1940440000	PCB plug-in connector, female plug, 3.81 mm, Number of poles: 14,	IEC: 320 V / 17.5 A / 0.2 - 1.5 mm ²	Box
GTIN (EAN)	4032248656394	270°, Clamping yoke connection, Clamping range, max. : 1.5 mm ² ,	UL: 300 V / 10 A / AWG 28 - AWG 16	
Qty.	50 pc(s).	Box		
Type	BCZ 3.81/11/270 SN OR BX	Version	Product data	Packaging
Order No.	1940280000	PCB plug-in connector, female plug, 3.81 mm, Number of poles: 11,	IEC: 320 V / 17.5 A / 0.2 - 1.5 mm ²	Box
GTIN (EAN)	4032248656554	270°, Clamping yoke connection, Clamping range, max. : 1.5 mm ² ,	UL: 300 V / 10 A / AWG 28 - AWG 16	
Qty.	50 pc(s).	Box		
Type	BCZ 3.81/04/270 SN GN BX	Version	Product data	Packaging
Order No.	1799030000	PCB plug-in connector, female plug, 3.81 mm, Number of poles: 4,	IEC: 320 V / 17.5 A / 0.2 - 1.5 mm ²	Box
GTIN (EAN)	4032248243921	270°, Clamping yoke connection, Clamping range, max. : 1.5 mm ² ,	UL: 300 V / 10 A / AWG 28 - AWG 16	
Qty.	50 pc(s).	Box		
Type	BCZ 3.81/12/270 SN GN BX	Version	Product data	Packaging
Order No.	1799080000	PCB plug-in connector, female plug, 3.81 mm, Number of poles: 12,	IEC: 320 V / 17.5 A / 0.2 - 1.5 mm ²	Box
GTIN (EAN)	4032248243976	270°, Clamping yoke connection, Clamping range, max. : 1.5 mm ² ,	UL: 300 V / 10 A / AWG 28 - AWG 16	
Qty.	50 pc(s).	Box		
Type	BCZ 3.81/06/270 SN GN BX	Version	Product data	Packaging
Order No.	1799050000	PCB plug-in connector, female plug, 3.81 mm, Number of poles: 6,	IEC: 320 V / 17.5 A / 0.2 - 1.5 mm ²	Box
GTIN (EAN)	4032248243945	270°, Clamping yoke connection, Clamping range, max. : 1.5 mm ² ,	UL: 300 V / 10 A / AWG 28 - AWG 16	
Qty.	50 pc(s).	Box		

OMNIMATE Signal - series BC/SC 3.81 SC 3.81/02/90G 3.2SN BK BX

Weidmüller Interface GmbH & Co. KG
 Klingenbergstraße 26
 D-32758 Detmold
 Germany
 Fon: +49 5231 14-0
 Fax: +49 5231 14-292083
 www.weidmueller.com

Accessories

LED Light guides



Effective: the link between LED and front panel.

Floodlight indicators allow users to monitor the switching states without requiring a special design: optical plastic directs the light from standard LEDs around a bend into the connectors or through the front plate.

The fibre-optic elements are simply clipped behind the relevant 90° bend male connectors (90° outlet direction). Versions with different incoming light beam heights achieve maximum light efficiency for LEDs with different designs or heights.

The advantages compared to conventional solutions:

- No additional LED circuit board required behind the front panel
- No "long-legged" LEDs with separate mounting required
- Bent fibre-optic cable line for maximum light efficiency
- Uncomplicated front plate bore holes due to circular shape of outgoing light beam
- Easy to maintain correct clearance and creepage distance
- Can be partitioned for smaller pole numbers

The result: simplified manufacturing process, reduced costs and simplified design

General ordering data

Type	SC 3.81 FLA 2.3/14.25	Version	Product data	Packaging
Order No.	1979750000	PCB plug-in connector, Accessories, Flood-light display, Transparent,		Box
GTIN (EAN)	4032248752478	Number of poles: 8		
Qty.	50 pc(s).			
Type	SC 3.81 FLA 2.3/16	Version	Product data	Packaging
Order No.	1979740000	PCB plug-in connector, Accessories, Flood-light display, Transparent,		Box
GTIN (EAN)	4032248752461	Number of poles: 8		
Qty.	50 pc(s).			
Type	SC 3.81 FLA 1.5/14.25	Version	Product data	Packaging
Order No.	1979730000	PCB plug-in connector, Accessories, Flood-light display, Transparent,		Box
GTIN (EAN)	4032248752454	Number of poles: 8		
Qty.	50 pc(s).			
Type	SC 3.81 FLA 1.5/16	Version	Product data	Packaging
Order No.	1979720000	PCB plug-in connector, Accessories, Flood-light display, Transparent,		Box
GTIN (EAN)	4032248752447	Number of poles: 8		
Qty.	50 pc(s).			

Data sheet

OMNIMATE Signal - series BC/SC 3.81 SC 3.81/02/90G 3.2SN BK BX

Weidmüller Interface GmbH & Co. KG
 Klingenbergstraße 26
 D-32758 Detmold
 Germany
 Fon: +49 5231 14-0
 Fax: +49 5231 14-292083
 www.weidmueller.com

Accessories

Coding elements



**Only connects what is supposed to be connected:
the right connection at the right place.**

Coding elements and locking devices clearly assign connecting elements during the manufacturing process and operation

The coding elements and locking devices are inserted prior to assembly or during the cable assembly phase. The Weidmüller alternative: configure online using the variant configurator to precode prior to delivery.

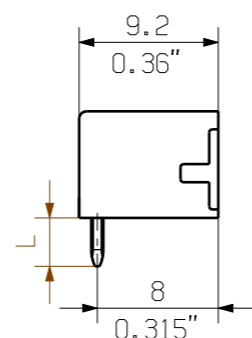
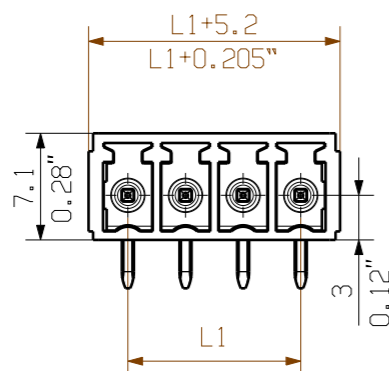
Incorrect assembly on the circuit board and incorrect plugging of connecting elements is no longer possible. The advantage: no troubleshooting during manufacture and no operational errors by the user.

General ordering data

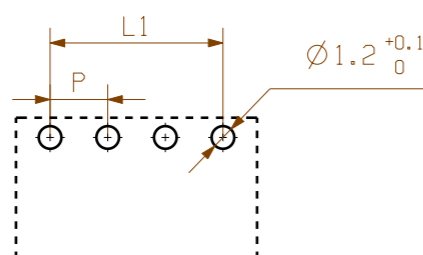
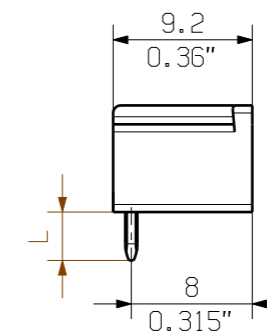
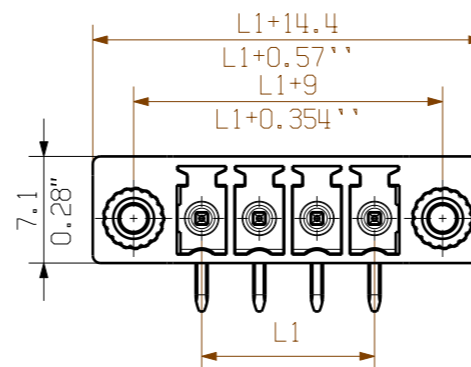
	Type	Version	Product data	Packaging
Type	SC-SMT 3.81 KO GY BX			
Order No.	1968900000	PCB plug-in connector, Accessories, Coding element, grey, Number of		Box
GTIN (EAN)	4032248772865	poles: 6		
Qty.	100 pc(s).			

08

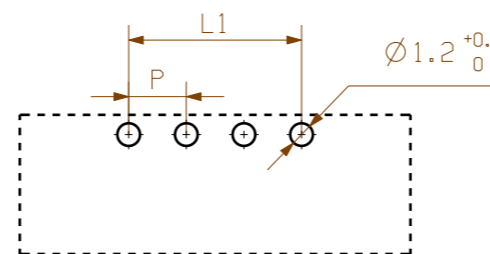
SC 3.81/.../90G 3.2....



SC 3.81/.../90F 3.2...



PCB LAYOUT



PCB LAYOUT

KUNDENZEICHUNG
CUSTOMER DRAWING

P=3.81

20	72.39	2.850
19	68.58	2.700
18	64.77	2.550
17	60.96	2.400
16	57.15	2.250
15	53.34	2.100
14	49.53	1.950
13	45.72	1.800
12	41.91	1.650
11	38.10	1.500
10	34.29	1.350
9	30.48	1.200
8	26.67	1.050
7	22.86	0.900
6	19.05	0.750
5	15.24	0.600
4	11.43	0.450
3	7.62	0.300
2	3.81	0.150
N	L1 [mm]	L1 [inch]

For the mounting of PCBs, it should be noted that the rated data given in the catalogue relates only to the connection elements. The necessary creepage and clearance paths must be observed in connection with the respective applicant in accordance to VDE 0110. The current-carrying capacity and pitch tolerance is to be determined according to DIN IEC 326 part 3 very fine.

Weidmüller connectors are tested to the DIN VDE 0627 standard, and are valid for its field of application. Provided that the connectors are used to the intended purpose, all requirements with respect to the occurring of electrical, mechanical, thermic and corrosive stress will be satisfied.

GENERAL TOLERANCE: DIN ISO 2768-m RoHS COMPLIANT	97482/0	01	Weidmüller	C 40384 08 Drawing no. Issue no.
	06.09.17 MA_J			
Modification	Date	Name	SC 3.81/.../90...3.2.... ANSCHLUSS STIFTLAISTE PIN HEADER	
Drawn	09.02.2006	ZHANG_H		
Responsible		MA_J		
Checked	13.09.2017	ZHOU_N		
Supersedes:	Approved	XU_S	Product file: SC 3.81	7069

The reproduction, distribution and utilization of this document as well as the communication of its contents without explicit authorization is prohibited. Offenders will be held liable for the payment of damages. Weidmüller exclusively reserves the right to file for patents, utility models or designs.

© Weidmüller Interface GmbH & Co. KG

Recommended wave soldering profiles

Weidmüller Interface GmbH & Co. KG
 Klingenbergstraße 16
 D-32758 Detmold
 Germany
 Fon: +49 5231 14-0
 Fax: +49 5231 14-292083
 www.weidmueller.com

Single Wave:



Double Wave:



Wave soldering profiles

Wired connection elements should be processed in accordance with the DIN EN 61760-1 standard. We have included two recommendations for practical wave soldering profiles, with which Weidmüller PCB terminals and connectors are qualified.

When choosing a suitable profile for your application, the following factors also need to be considered:

- PCB thickness
- Proportion of Cu in the layers
- Single/double-sided assembly
- Product range
- Heating and cooling rates

The single and double wave profiles each indicate the recommended operating range, including the maximum soldering temperature of 260°C. In practice, the maximum soldering temperature is quite often well below the above maximum profile.