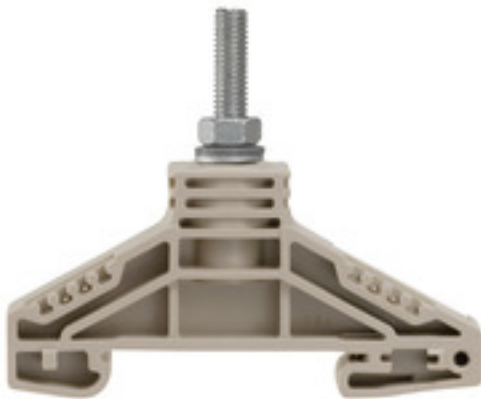


**Bolt-type screw terminals  
WF 5**

**Weidmüller Interface GmbH & Co. KG**  
Klingenbergstraße 26  
D-32758 Detmold  
Germany  
Fon: +49 5231 14-0  
Fax: +49 5231 14-292083  
www.weidmueller.com

**Product image****Klippon® Connect with stud Technology**

Our stud terminals are an established, robust connection alternative for particularly harsh environments. The extensive accessories and quality workmanship ensure high productivity in planning and installation – and sustainable safety in operation..

**General ordering data**

Type	WF 5
Order No.	<a href="#">1790130000</a>
Version	Bolt-type screw terminals, Feed-through terminal, Rated cross-section: 16 mm <sup>2</sup> , Threaded stud connection
GTIN (EAN)	4032248366637
Qty.	25 pc(s).

Creation date May 3, 2020 3:16:00 PM CEST

Catalogue status 17.04.2020 / We reserve the right to make technical changes.

## Bolt-type screw terminals WF 5

**Weidmüller Interface GmbH & Co. KG**  
Klingenbergstraße 26  
D-32758 Detmold  
Germany  
Fon: +49 5231 14-0  
Fax: +49 5231 14-292083  
www.weidmueller.com

## Technical data

### Dimensions and weights

Width	13 mm	Width (inches)	0.512 inch
Height	67 mm	Height (inches)	2.638 inch
Depth	54.5 mm	Depth (inches)	2.146 inch
Net weight	20.214 g		

### Temperatures

Storage temperature, max.	40 °C	Storage temperature, min.	10 °C
Storage temperature	10 °C...40 °C	Continuous operating temp., min.	-50 °C
Continuous operating temp., max.	120 °C		

### Material data

Material	Wemid	Colour	dark beige
UL 94 flammability rating	V-0		

### System specifications

Version	Single-stud terminals	Number of levels	1
Number of clamping points per level	1	Levels cross-connected internally	No
PE connection	No	Rail	TS 35

### Additional technical data

Explosion-tested version	No	Open sides	Open
Type of mounting	Snap-on		

### CSA rating data

Certificate No. (CSA)	200039-1244019	Current size C (CSA)	85 A
Voltage size C (CSA)	1000 V	Wire cross section max. (CSA)	4 AWG
Wire cross section min. (CSA)	10 AWG		

### Conductors for clamping (rated connection)

2 x cable lugs DIN 46 234	0.1 to 16 mm <sup>2</sup>	2 x cable lugs DIN 46 235	6...10 mm <sup>2</sup>
Cable lug to DIN 46234	0.1...16 mm <sup>2</sup>	Cable lug to DIN 46235	6...10 mm <sup>2</sup>
Clamping range, max.	16 mm <sup>2</sup>	Clamping range, min.	0.1 mm <sup>2</sup>
Number of connections	1	Stud size for spade connection	M 5
Tightening torque, max.	4 Nm	Tightening torque, min.	2 Nm
Type of connection	Threaded stud connection		

### Rating data

Rated cross-section	16 mm <sup>2</sup>	Rated voltage	1,000 V
Rated current	76 A	Current at maximum wires	76 A
Volume resistance according to IEC 60947-7-x	0.42 mΩ	Power loss in accordance with IEC 60947-7-x	2.43 W
Rated impulse withstand voltage	8 kV	Pollution severity	3

**Bolt-type screw terminals**  
**WF 5**

**Weidmüller Interface GmbH & Co. KG**  
 Klingenbergstraße 26  
 D-32758 Detmold  
 Germany  
 Fon: +49 5231 14-0  
 Fax: +49 5231 14-292083  
 www.weidmueller.com

**Technical data****Stud connection**

2 x cable lugs DIN 46 234	0.1 to 16 mm <sup>2</sup>	2 x cable lugs DIN 46 235	6...10 mm <sup>2</sup>
Cable lug to DIN 46234	0.1...16 mm <sup>2</sup>	Cable lug to DIN 46235	6...10 mm <sup>2</sup>
Stud size for spade connection	M 5	Tightening torque, max.	4 Nm
Tightening torque, min.	2 Nm		

**UL rating data**

Certificate No. (UR)	E60693	Conductor size Factory wiring max. (UR)	4 AWG
Conductor size Factory wiring min. (UR)	10 AWG	Conductor size Field wiring max. (UR)	4 AWG
Conductor size Field wiring min. (UR)	10 AWG	Current size C (UR)	85 A
Voltage size C (UR)	1000 V		

**Classifications**

ETIM 6.0	EC000897	ETIM 7.0	EC000897
eClass 9.0	27-14-11-20	eClass 9.1	27-14-11-20
eClass 10.0	27-14-11-20	UNSPSC	30-21-18-01

**Approvals**

Approvals



ROHS Conform

**Downloads**

Approval/Certificate/Document of Conformity	<a href="#">CB Test Certificate</a> <a href="#">CB Certificate</a> <a href="#">DE_PT1004_20160418_845_ISSUE01.pdf</a>
Brochure/Catalogue	<a href="#">CAT 1 TERM 16/17 EN</a>
Engineering Data	<a href="#">EPLAN, WSCAD</a>
Engineering Data	<a href="#">STEP</a>
User Documentation	<a href="#">StorageConditionsTerminalBlocks</a>

**Safety note**Safety notice [Safety Information](#)

**Data sheet**

**Bolt-type screw terminals  
WF 5**

**Weidmüller Interface GmbH & Co. KG**  
Klingenbergstraße 26  
D-32758 Detmold  
Germany  
Fon: +49 5231 14-0  
Fax: +49 5231 14-292083  
[www.weidmueller.com](http://www.weidmueller.com)

**Drawings**



## Bolt-type screw terminals WF 5

**Weidmüller Interface GmbH & Co. KG**  
 Klingenbergstraße 26  
 D-32758 Detmold  
 Germany  
 Fon: +49 5231 14-0  
 Fax: +49 5231 14-292083  
 www.weidmueller.com

## Accessories

### Cross-connections



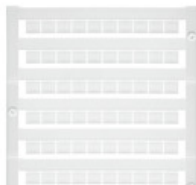
#### Klippon® Connect with stud Technology

Our stud terminals are an established, robust connection alternative for particularly harsh environments. The extensive accessories and quality workmanship ensure high productivity in planning and installation – and sustainable safety in operation..

### General ordering data

Type	WQL 3 WF5	Version
Order No.	<a href="#">1812740000</a>	Bolt-type screw terminals, Cross-connector, Number of poles: 3
GTIN (EAN)	4032248404551	
Qty.	5 pc(s).	
Type	WQL 2 WF5	Version
Order No.	<a href="#">1812710000</a>	Bolt-type screw terminals, Cross-connector, Number of poles: 2
GTIN (EAN)	4032248404568	
Qty.	5 pc(s).	

### Blank



The Dekafix (DEK) marker is the universal marker for all conductor and plug-in connectors as well as for electronic sub-assemblies. The system is ideal for short number sequences and covers a wide range of ready-printed markers.

Strips for fast installation in only one work step. The printing is easy to read, rich in contrast and available in various widths.

- Large range of ready-to-use markers
- Strips for fast installation
- Terminal markers, suitable for all Weidmüller cable connectors
- Available as blank MultiCard or with standard printing

**For custom printing:** Please send us a file of our labeling software M-Print PRO or M-Print PRO Online (without installation) for your labeling specifications.

### General ordering data

Type	DEK 5/6 MC NE WS	Version
Order No.	<a href="#">1609820000</a>	Dekafix, Terminal marker, 5 x 6 mm, Pitch in mm (P): 6.00
GTIN (EAN)	4008190203436	Weidmueller, white
Qty.	1,000 pc(s).	

## Bolt-type screw terminals WF 5

**Weidmüller Interface GmbH & Co. KG**  
 Klingenbergstraße 26  
 D-32758 Detmold  
 Germany  
 Fon: +49 5231 14-0  
 Fax: +49 5231 14-292083  
 www.weidmueller.com

## Accessories

### Partition plates



#### **Klippon® Connect with stud Technology**

Our stud terminals are an established, robust connection alternative for particularly harsh environments. The extensive accessories and quality workmanship ensure high productivity in planning and installation – and sustainable safety in operation..

### General ordering data

Type	WTW WF6 2300	Version
Order No.	<a href="#">1781230000</a>	Bolt-type screw terminals, Separation plate, grey, 2 mm
GTIN (EAN)	4032248241125	
Qty.	20 pc(s).	
Type	WTW WF6	Version
Order No.	<a href="#">1781220000</a>	Bolt-type screw terminals, Separation plate, dark beige, 3 mm
GTIN (EAN)	4032248219377	
Qty.	20 pc(s).	
Type	WTW WF6-WF12	Version
Order No.	<a href="#">1781240000</a>	Bolt-type screw terminals, Separation plate, dark beige, 2.5 mm
GTIN (EAN)	4032248241156	
Qty.	20 pc(s).	

### Shrouding covers



#### **Klippon® Connect with stud Technology**

Our stud terminals are an established, robust connection alternative for particularly harsh environments. The extensive accessories and quality workmanship ensure high productivity in planning and installation – and sustainable safety in operation..

### General ordering data

Type	ADP WF6/WF8	Version
Order No.	<a href="#">1780930000</a>	Bolt-type screw terminals, Cover profile, Transparent, 1000 mm
GTIN (EAN)	4032248241248	
Qty.	1 m	
Type	HA ADP WF6/WF10	Version
Order No.	<a href="#">1781050000</a>	Bolt-type screw terminals, Cover profile, dark beige, 2.2 mm
GTIN (EAN)	4032248241231	
Qty.	10 pc(s).	

**Bolt-type screw terminals  
WF 5**

**Weidmüller Interface GmbH & Co. KG**  
 Klingenbergstraße 26  
 D-32758 Detmold  
 Germany  
 Fon: +49 5231 14-0  
 Fax: +49 5231 14-292083  
 www.weidmueller.com

**Accessories**

**Blank**



WS markers are the perfect match for the W-series connectors. Thanks to their system compatibility, the WS tags can also be used with the I-series and the Z-series. The large marking surfaces do not only permit long character strings but also multi-line text. WS markers are ideal for labels with long, customised character strings. Thanks to the proven MultiCard format, printing with laser printer, PrintJet ADVANCED, plotter or MC-Mobilo is possible.

- Can be fitted in strips or individually
- Markers in proven MultiCard format

**For custom printing:** Please send us a file of our labeling software M-Print PRO or M-Print PRO Online (without installation) for your labeling specifications.

**General ordering data**

Type	WS 15/5 MC NE WS	Version
Order No.	<a href="#">1609880000</a>	WS, Terminal marker, 15 x 5 mm, Pitch in mm (P): 5.00 Weidmueller,
GTIN (EAN)	4008190203504	Allen-Bradley, white
Qty.	480 pc(s).	

**End brackets**



**Klippon® Connect with clamping yoke Technology**  
 The high reliability and variety of designs of the terminal blocks with clamping yoke connections make planning easier and optimises operational safety. Klippon® Connect provides a proven response to a range of different requirements.

**General ordering data**

Type	WEW 35/2	Version
Order No.	<a href="#">1061200000</a>	W-Series, End bracket
GTIN (EAN)	4008190030230	
Qty.	100 pc(s).	