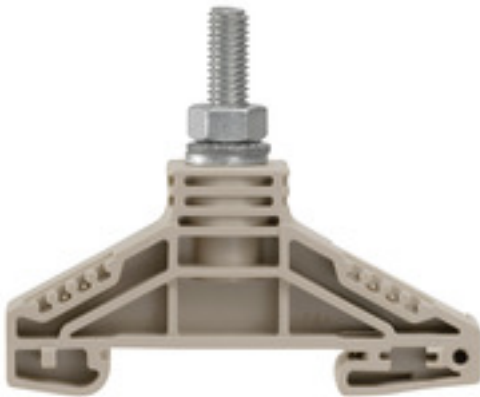


**Bolt-type screw terminals
WF 6**

Weidmüller Interface GmbH & Co. KG
Klingenbergstraße 26
D-32758 Detmold
Germany
Fon: +49 5231 14-0
Fax: +49 5231 14-292083
www.weidmueller.com

Product image**Klippon® Connect with stud Technology**

Our stud terminals are an established, robust connection alternative for particularly harsh environments. The extensive accessories and quality workmanship ensure high productivity in planning and installation – and sustainable safety in operation..

General ordering data

Type	WF 6
Order No.	1780850000
Version	Bolt-type screw terminals, Feed-through terminal, Rated cross-section: 35 mm ² , Threaded stud connection
GTIN (EAN)	4032248219339
Qty.	25 pc(s).

Creation date May 3, 2020 1:41:41 PM CEST

Catalogue status 17.04.2020 / We reserve the right to make technical changes.

Bolt-type screw terminals
WF 6

Weidmüller Interface GmbH & Co. KG
 Klingenbergstraße 26
 D-32758 Detmold
 Germany
 Fon: +49 5231 14-0
 Fax: +49 5231 14-292083
 www.weidmueller.com

Technical data**Dimensions and weights**

Width	17.8 mm	Width (inches)	0.701 inch
Height	67 mm	Height (inches)	2.638 inch
Depth	54.5 mm	Depth (inches)	2.146 inch
Net weight	26.494 g		

Temperatures

Storage temperature, max.	40 °C	Storage temperature, min.	10 °C
Storage temperature	10 °C...40 °C	Continuous operating temp., min.	-50 °C
Continuous operating temp., max.	120 °C		

Material data

Material	Wemid	Colour	dark beige
UL 94 flammability rating	V-0		

System specifications

Version	Single-stud terminals	End cover plate required	No
Number of levels	1	Number of clamping points per level	1
Levels cross-connected internally	No	PE connection	No
Rail	TS 35		

Additional technical data

Explosion-tested version	No	Number of similar terminals	1
Open sides	Open	Type of mounting	Snap-on

CSA rating data

Certificate No. (CSA)	200039-1244019	Current size C (CSA)	150 A
Voltage size C (CSA)	1000 V	Wire cross section max. (CSA)	2 AWG
Wire cross section min. (CSA)	14 AWG		

Conductors for clamping (rated connection)

2 x cable lugs DIN 46 234	2.5 to 35 mm ²	2 x cable lugs DIN 46 235	6...25 mm ²
Cable lug to DIN 46234	2.5...35 mm ²	Cable lug to DIN 46235	6...25 mm ²
Clamping range, max.	35 mm ²	Clamping range, min.	2.5 mm ²
Number of connections	1	Stud size for spade connection	M 6
Tightening torque, max.	6 Nm	Tightening torque, min.	3 Nm
Type of connection	Threaded stud connection		

Rating data

Rated cross-section	35 mm ²	Rated voltage	1,000 V
Voltage with epoxy resin partition plate	2,300 V	Rated current	125 A
Current at maximum wires	125 A	Volume resistance according to IEC 60947-7-x	0.26 mΩ
Power loss in accordance with IEC 60947-7-x	4 W	Rated impulse withstand voltage	8 kV
Impulse voltage with epoxy resin partition plate	12 kV	Pollution severity	3

**Bolt-type screw terminals
WF 6**

Weidmüller Interface GmbH & Co. KG
 Klingenbergstraße 26
 D-32758 Detmold
 Germany
 Fon: +49 5231 14-0
 Fax: +49 5231 14-292083
 www.weidmueller.com

Technical data
Stud connection

2 x cable lugs DIN 46 234	2.5 to 35 mm ²	2 x cable lugs DIN 46 235	6...25 mm ²
Cable lug to DIN 46234	2.5...35 mm ²	Cable lug to DIN 46235	6...25 mm ²
Impulse voltage with epoxy resin partition plate	12 kV	Stud size for spade connection	M 6
Tightening torque, max.	6 Nm	Tightening torque, min.	3 Nm
Voltage with epoxy resin partition plate	2,300 V		

UL rating data

Certificate No. (UR)	E60693	Certificate No. (cURus)	E60693
Conductor size Factory wiring max. (UR)	2 AWG	Conductor size Factory wiring min. (UR)	14 AWG
Conductor size Field wiring max. (UR)	2 AWG	Conductor size Field wiring min. (UR)	14 AWG
Current size C (UR)	115 A	Voltage size C (UR)	1000 V

Classifications

ETIM 6.0	EC000897	ETIM 7.0	EC000897
eClass 9.0	27-14-11-20	eClass 9.1	27-14-11-20
eClass 10.0	27-14-11-20	UNSPSC	30-21-18-01

Approvals

Approvals



ROHS Conform

Downloads

Approval/Certificate/Document of Conformity	CB Test Certificate CB Certificate DE_PT1004_20160418_848_ISSUE01.pdf
Brochure/Catalogue	CAT 1 TERM 16/17 EN
Engineering Data	EPLAN, WSCAD
Engineering Data	STEP
User Documentation	StorageConditionsTerminalBlocks

Safety note

 Safety notice [Safety Information](#)

Data sheet

**Bolt-type screw terminals
WF 6**

Weidmüller Interface GmbH & Co. KG
Klingenbergstraße 26
D-32758 Detmold
Germany
Fon: +49 5231 14-0
Fax: +49 5231 14-292083
www.weidmueller.com

Drawings



**Bolt-type screw terminals
WF 6**

Weidmüller Interface GmbH & Co. KG
 Klingenbergstraße 26
 D-32758 Detmold
 Germany
 Fon: +49 5231 14-0
 Fax: +49 5231 14-292083
 www.weidmueller.com

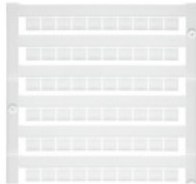
Accessories
Cross-connections

Klippon® Connect with stud Technology

Our stud terminals are an established, robust connection alternative for particularly harsh environments. The extensive accessories and quality workmanship ensure high productivity in planning and installation – and sustainable safety in operation..

General ordering data

Type	WQL 2 WF6	Version
Order No.	1780970000	Bolt-type screw terminals, Cross-connector, Number of poles: 2
GTIN (EAN)	4032248219407	
Qty.	5 pc(s).	
Type	WQL 3 WF6	Version
Order No.	1780980000	Bolt-type screw terminals, Cross-connector, Number of poles: 3
GTIN (EAN)	4032248241194	
Qty.	5 pc(s).	

Blank


The Dekafix (DEK) marker is the universal marker for all conductor and plug-in connectors as well as for electronic sub-assemblies. The system is ideal for short number sequences and covers a wide range of ready-printed markers.

Strips for fast installation in only one work step. The printing is easy to read, rich in contrast and available in various widths.

- Large range of ready-to-use markers
- Strips for fast installation
- Terminal markers, suitable for all Weidmüller cable connectors
- Available as blank MultiCard or with standard printing

For custom printing: Please send us a file of our labeling software M-Print PRO or M-Print PRO Online (without installation) for your labeling specifications.

General ordering data

Type	DEK 5/6 MC NE WS	Version
Order No.	1609820000	Dekafix, Terminal marker, 5 x 6 mm, Pitch in mm (P): 6.00
GTIN (EAN)	4008190203436	Weidmueller, white
Qty.	1,000 pc(s).	

Bolt-type screw terminals WF 6

Weidmüller Interface GmbH & Co. KG
 Klingenbergstraße 26
 D-32758 Detmold
 Germany
 Fon: +49 5231 14-0
 Fax: +49 5231 14-292083
 www.weidmueller.com

Accessories

Partition plates



Klippon® Connect with stud Technology

Our stud terminals are an established, robust connection alternative for particularly harsh environments. The extensive accessories and quality workmanship ensure high productivity in planning and installation – and sustainable safety in operation..

General ordering data

Type	WTW WF6 2300	Version
Order No.	1781230000	Bolt-type screw terminals, Separation plate, grey, 2 mm
GTIN (EAN)	4032248241125	
Qty.	20 pc(s).	
Type	WTW WF6	Version
Order No.	1781220000	Bolt-type screw terminals, Separation plate, dark beige, 3 mm
GTIN (EAN)	4032248219377	
Qty.	20 pc(s).	
Type	WTW WF6-WF12	Version
Order No.	1781240000	Bolt-type screw terminals, Separation plate, dark beige, 2.5 mm
GTIN (EAN)	4032248241156	
Qty.	20 pc(s).	

Shrouding covers



Klippon® Connect with stud Technology

Our stud terminals are an established, robust connection alternative for particularly harsh environments. The extensive accessories and quality workmanship ensure high productivity in planning and installation – and sustainable safety in operation..

General ordering data

Type	ADP WF6/WF8	Version
Order No.	1780930000	Bolt-type screw terminals, Cover profile, Transparent, 1000 mm
GTIN (EAN)	4032248241248	
Qty.	1 m	
Type	HA ADP WF6/WF10	Version
Order No.	1781050000	Bolt-type screw terminals, Cover profile, dark beige, 2.2 mm
GTIN (EAN)	4032248241231	
Qty.	10 pc(s).	

**Bolt-type screw terminals
WF 6**

Weidmüller Interface GmbH & Co. KG
 Klingenbergstraße 26
 D-32758 Detmold
 Germany
 Fon: +49 5231 14-0
 Fax: +49 5231 14-292083
 www.weidmueller.com

Accessories

Blank



WS markers are the perfect match for the W-series connectors. Thanks to their system compatibility, the WS tags can also be used with the I-series and the Z-series. The large marking surfaces do not only permit long character strings but also multi-line text. WS markers are ideal for labels with long, customised character strings. Thanks to the proven MultiCard format, printing with laser printer, PrintJet ADVANCED, plotter or MC-Mobilo is possible.

- Can be fitted in strips or individually
- Markers in proven MultiCard format

For custom printing: Please send us a file of our labeling software M-Print PRO or M-Print PRO Online (without installation) for your labeling specifications.

General ordering data

Type	WS 15/5 MC NE WS	Version
Order No.	1609880000	WS, Terminal marker, 15 x 5 mm, Pitch in mm (P): 5.00 Weidmueller,
GTIN (EAN)	4008190203504	Allen-Bradley, white
Qty.	480 pc(s).	

Potential distribution



Klippon® Connect with stud Technology

Our stud terminals are an established, robust connection alternative for particularly harsh environments. The extensive accessories and quality workmanship ensure high productivity in planning and installation – and sustainable safety in operation..

General ordering data

Type	WZAF 35	Version
Order No.	1070500000	W-Series, Additional connection
GTIN (EAN)	4008190024512	
Qty.	10 pc(s).	

Data sheet

**Bolt-type screw terminals
WF 6**

Weidmüller Interface GmbH & Co. KG
 Klingenbergstraße 26
 D-32758 Detmold
 Germany
 Fon: +49 5231 14-0
 Fax: +49 5231 14-292083
 www.weidmueller.com

Accessories

End brackets



Klippon® Connect with clamping yoke Technology
 The high reliability and variety of designs of the terminal blocks with clamping yoke connections make planning easier and optimises operational safety. Klippon® Connect provides a proven response to a range of different requirements.

General ordering data

Type	WEW 35/2	Version
Order No.	1061200000	W-Series, End bracket
GTIN (EAN)	4008190030230	
Qty.	100 pc(s).	