

**Z-series  
ZDL 2.5/SI/DU**

**Weidmüller Interface GmbH & Co. KG**  
 Klingenbergstraße 26  
 D-32758 Detmold  
 Germany  
 Fon: +49 5231 14-0  
 Fax: +49 5231 14-292083  
 www.weidmueller.com



**Building installation wiring**

For building installations, we offer a complete system that revolves around the 10×3 copper rail and comprises perfectly coordinated components: from installation terminal blocks, neutral conductor terminal blocks and distribution terminal blocks to comprehensive accessories such as busbars and busbar holders.

**General ordering data**

Type	ZDL 2.5/SI/DU
Order No.	<a href="#">1763 180000</a>
Version	Z-series, Fuse terminal, Rated cross-section: 2.5 mm <sup>2</sup> , Tension-clamp connection, dark beige, Direct mounting
GTIN (EAN)	4032248108947
Qty.	25 pc(s).

**Z-series  
ZDL 2.5/SI/DU**

**Weidmüller Interface GmbH & Co. KG**  
 Klingenbergstraße 26  
 D-32758 Detmold  
 Germany  
 Fon: +49 5231 14-0  
 Fax: +49 5231 14-292083  
 www.weidmueller.com

**Technical data**
**Dimensions and weights**

Width	5.1 mm	Width (inches)	0.201 inch
Height	95 mm	Height (inches)	3.74 inch
Depth	98 mm	Depth (inches)	3.858 inch
Net weight	19.04 g		

**Temperatures**

Storage temperature, max.	40 °C	Storage temperature, min.	10 °C
Storage temperature	10 °C...40 °C	Continuous operating temp., min.	-50 °C
Continuous operating temp., max.	120 °C		

**Material data**

Material	Wemid	Colour	dark beige
UL 94 flammability rating	V-0		

**System specifications**

Version	Tension-clamp connection, Fuse cartridge, for plug-in cross-connector, One end without connector, Without LED	End cover plate required	Yes
Number of potentials	2	Number of levels	2
Number of clamping points per level	2	Number of potentials per tier	1
Levels cross-connected internally	No	PE connection	No
Rail	TS 35	N-function	No
PE function	No	PEN function	No

**Additional technical data**

Explosion-tested version	No	Installation advice	Direct mounting
Number of similar terminals	1	Open sides	right
Type of mounting	Snap-on		

**CSA rating data**

Certificate No. (CSA)	154685-1142891	Current size D (CSA)	10 A
Voltage size D (CSA)	300 V	Wire cross section max. (CSA)	12 AWG
Wire cross section min. (CSA)	26 AWG		

**Conductors for clamping (additional connection)**

Conductor cross-section, flexible plus plastic collar DIN 46228/1, further connection, max.	2.5 mm <sup>2</sup>
---	---------------------

**Z-series  
ZDL 2.5/SI/DU**

**Weidmüller Interface GmbH & Co. KG**  
 Klingenbergstraße 26  
 D-32758 Detmold  
 Germany  
 Fon: +49 5231 14-0  
 Fax: +49 5231 14-292083  
 www.weidmueller.com

**Technical data**
**Conductors for clamping (rated connection)**

Blade size	0.6 x 3.5 mm	Clamping range, max.	4 mm <sup>2</sup>
Clamping range, min.	0.13 mm <sup>2</sup>	Connection direction	Inclined / angled
Gauge to IEC 60947-1	A3	Number of connections	4
Stripping length	10 mm	Type of connection	Tension-clamp connection
Wire connection cross section AWG, max.	AWG 12	Wire connection cross section AWG, min.	AWG 26
Wire connection cross section, finely stranded, max.	4 mm <sup>2</sup>	Wire connection cross-section, finely stranded with wire-end ferrules DIN 46228/1, max.	2.5 mm <sup>2</sup>
Wire connection cross-section, finely stranded with wire-end ferrules DIN 46228/1, min.	0.5 mm <sup>2</sup>	Wire connection cross-section, finely stranded with wire-end ferrules DIN 46228/4, max.	2.5 mm <sup>2</sup>
Wire connection cross-section, finely stranded with wire-end ferrules DIN 46228/4, min.	0.5 mm <sup>2</sup>	Wire connection cross-section, finely stranded, min.	0.5 mm <sup>2</sup>
Wire connection cross-section, solid core, max.	4 mm <sup>2</sup>	Wire connection cross-section, solid core, min.	0.5 mm <sup>2</sup>

**PE rating data**

PEN function	No
--------------	----

**Rating data**

Rated cross-section	2.5 mm <sup>2</sup>	Rated voltage	400 V
Rated voltage to adjoining terminal	400 V	Rated current	6.3 A
Current at maximum wires	6.3 A	Standards	IEC 60947-7-3
Volume resistance according to IEC 60947-7-x	1.33 mΩ	Power loss in accordance with IEC 60947-7-x	0.77 W
Rated impulse withstand voltage	6 kV	Pollution severity	3

**UL rating data**

Certificate No. (UR)	E60693	Conductor size Factory wiring max. (UR)	12 AWG
Conductor size Factory wiring min. (UR)	26 AWG	Conductor size Field wiring max. (UR)	12 AWG
Conductor size Field wiring min. (UR)	26 AWG	Current size B (UR)	15 A
Current size D (UR)	10 A	Voltage size B (UR)	300 V
Voltage size D (UR)	300 V		

**Classifications**

ETIM 6.0	EC000899	ETIM 7.0	EC000899
eClass 9.0	27-14-11-16	eClass 9.1	27-14-11-16
eClass 10.0	27-14-11-16	UNSPSC	30-21-18-11

**Approvals**

Approvals



ROHS Conform

**Data sheet****Z-series  
ZDL 2.5/SI/DU**

**Weidmüller Interface GmbH & Co. KG**  
Klingenbergstraße 26  
D-32758 Detmold  
Germany  
Fon: +49 5231 14-0  
Fax: +49 5231 14-292083  
www.weidmueller.com

**Technical data****Downloads**

Approval/Certificate/Document of Conformity	<a href="#">CB Certificate</a> <a href="#">CB Test Certificate</a> <a href="#">DE_PT1103_20160418_1115_ISSUE01.pdf</a>
Engineering Data	<a href="#">EPLAN_WSCAD</a>
Engineering Data	<a href="#">STEP</a>
User Documentation	<a href="#">StorageConditionsTerminalBlocks</a> <a href="#">Instruction sheet</a>

**Safety note**

Safety notice	<a href="#">Safety Information</a>
---------------	------------------------------------

## Z-series ZDL 2.5/SI/DU

**Weidmüller Interface GmbH & Co. KG**  
 Klingenbergstraße 26  
 D-32758 Detmold  
 Germany  
 Fon: +49 5231 14-0  
 Fax: +49 5231 14-292083  
 www.weidmueller.com

# Accessories

## Slotted screwdriver

Slotted screwdriver with rounded blade SD DIN 5265, ISO 2380/2, output to DIN 5264, ISO 2380/1. ChromTop tip, SoftFinish grip



### General ordering data

Type	SDS 0.6X3.5X100	Version
Order No.	<a href="#">9008330000</a>	Screwdriver, Blade width (B): 3.5 mm, Blade length: 100 mm, Blade thickness (A): 0.6 mm
GTIN (EAN)	4032248056286	
Qty.	1 pc(s).	

## Fuses

### Klippon® Connect with clamping yoke Technology

The high reliability and variety of designs of the terminal blocks with clamping yoke connections make planning easier and optimises operational safety. Klippon® Connect provides a proven response to a range of different requirements.



### General ordering data

Type	G 20/0.10A/F	Version
Order No.	<a href="#">0430300000</a>	Active components, Fuse
GTIN (EAN)	4008190077174	
Qty.	10 pc(s).	
Type	G 20/1.00A/F	Version
Order No.	<a href="#">0430700000</a>	Active components, Fuse
GTIN (EAN)	4008190093877	
Qty.	10 pc(s).	
Type	G 20/6.30A/F	Version
Order No.	<a href="#">0431400000</a>	Active components, Fuse
GTIN (EAN)	4008190086053	
Qty.	10 pc(s).	
Type	G 20/0.25A/F	Version
Order No.	<a href="#">0430500000</a>	Active components, Fuse
GTIN (EAN)	4008190153991	
Qty.	10 pc(s).	
Type	G 20/3.15A/F	Version
Order No.	<a href="#">0431100000</a>	Active components, Fuse
GTIN (EAN)	4008190012977	
Qty.	10 pc(s).	

## Data sheet

### Z-series ZDL 2.5/SI/DU

**Weidmüller Interface GmbH & Co. KG**  
 Klingenbergstraße 26  
 D-32758 Detmold  
 Germany  
 Fon: +49 5231 14-0  
 Fax: +49 5231 14-292083  
 www.weidmueller.com

## Accessories

Type	G 20/2.00A/F	Version
Order No.	<a href="#">0430900000</a>	Active components, Fuse
GTIN (EAN)	4008190123567	
Qty.	10 pc(s).	
Type	G 20/1.60A/F	Version
Order No.	<a href="#">0430800000</a>	Active components, Fuse
GTIN (EAN)	4008190031503	
Qty.	10 pc(s).	
Type	G 20/5.00A/F	Version
Order No.	<a href="#">0431300000</a>	Active components, Fuse
GTIN (EAN)	4008190185381	
Qty.	10 pc(s).	
Type	G 20/0.50A/F	Version
Order No.	<a href="#">0430600000</a>	Active components, Fuse
GTIN (EAN)	4008190046835	
Qty.	10 pc(s).	
Type	G 20/4.00A/F	Version
Order No.	<a href="#">0431200000</a>	Active components, Fuse
GTIN (EAN)	4008190022983	
Qty.	10 pc(s).	
Type	G 20/2.50A/F	Version
Order No.	<a href="#">0431000000</a>	Active components, Fuse
GTIN (EAN)	4008190085513	
Qty.	10 pc(s).	
Type	G 20/0.20A/F	Version
Order No.	<a href="#">0430400000</a>	Active components, Fuse
GTIN (EAN)	4008190152383	
Qty.	10 pc(s).	
Type	G 20/0.63A/F	Version
Order No.	<a href="#">0439000000</a>	Active components, Fuse
GTIN (EAN)	4008190131210	
Qty.	10 pc(s).	

## Test plug



### Current and voltage transformer wiring

Our test disconnect terminal blocks featuring spring and screw connection technology allow you to create all the important converter circuits for measuring current, voltage and power in a safe and sophisticated way.

## General ordering data

Type	PS 2.3 RT	Version
Order No.	<a href="#">0180400000</a>	Accessories, Test plug
GTIN (EAN)	4008190060121	
Qty.	20 pc(s).	

Creation date May 3, 2020 11:16:20 AM CEST

Catalogue status 17.04.2020 / We reserve the right to make technical changes.

## Z-series ZDL 2.5/SI/DU

**Weidmüller Interface GmbH & Co. KG**  
 Klingenbergstraße 26  
 D-32758 Detmold  
 Germany  
 Fon: +49 5231 14-0  
 Fax: +49 5231 14-292083  
 www.weidmueller.com

# Accessories

## End plates



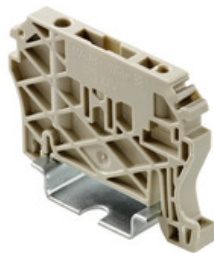
### Spring connection with tension clamp Technology

Tension clamp technology is a universal contact system for all common conductor connection types. Its fantastic level of flexibility makes the tension clamp a profitable alternative connection.

### General ordering data

Type	ZAP ZDL2.5	Version
Order No.	<a href="#">1720910000</a>	Z-series, End plate
GTIN (EAN)	4008190398880	
Qty.	20 pc(s).	

## End brackets



### Spring connection with tension clamp Technology

Tension clamp technology is a universal contact system for all common conductor connection types. Its fantastic level of flexibility makes the tension clamp a profitable alternative connection.

### General ordering data

Type	ZEW 35/2	Version
Order No.	<a href="#">8630740000</a>	Z-series, End bracket
GTIN (EAN)	4032248348916	
Qty.	20 pc(s).	

Type	ZEW 35	Version
Order No.	<a href="#">9540000000</a>	Z-series, End bracket
GTIN (EAN)	4008190956264	
Qty.	20 pc(s).	

## Z-series ZDL 2.5/SI/DU

**Weidmüller Interface GmbH & Co. KG**  
 Klingenbergstraße 26  
 D-32758 Detmold  
 Germany  
 Fon: +49 5231 14-0  
 Fax: +49 5231 14-292083  
 www.weidmueller.com

# Accessories

## ZQV 2.5N



### Spring connection with tension clamp Technology

Tension clamp technology is a universal contact system for all common conductor connection types. Its fantastic level of flexibility makes the tension clamp a profitable alternative connection.

### General ordering data

Type	ZQV 2.5N/3 GE	Version
Order No.	<a href="#">1693810000</a>	Z-series, Cross-connector, 24 A
GTIN (EAN)	4008190883645	
Qty.	60 pc(s).	
Type	ZQV 2.5N/7 GE	Version
Order No.	<a href="#">1693850000</a>	Z-series, Cross-connector, 24 A
GTIN (EAN)	4008190883683	
Qty.	20 pc(s).	
Type	ZQV 2.5N/6 GE	Version
Order No.	<a href="#">1693840000</a>	Z-series, Cross-connector, 24 A
GTIN (EAN)	4008190883676	
Qty.	20 pc(s).	
Type	ZQV 2.5N/8 GE	Version
Order No.	<a href="#">1693860000</a>	Z-series, Cross-connector, 24 A
GTIN (EAN)	4008190883690	
Qty.	20 pc(s).	
Type	ZQV 2.5N/2 GE	Version
Order No.	<a href="#">1693800000</a>	Z-series, Cross-connector, 24 A
GTIN (EAN)	4008190883621	
Qty.	60 pc(s).	
Type	ZQV 2.5N/5 GE	Version
Order No.	<a href="#">1693830000</a>	Z-series, Cross-connector, 24 A
GTIN (EAN)	4008190883669	
Qty.	20 pc(s).	
Type	ZQV 2.5N/9 GE	Version
Order No.	<a href="#">1693870000</a>	Z-series, Cross-connector, 24 A
GTIN (EAN)	4008190883706	
Qty.	20 pc(s).	
Type	ZQV 2.5N/50 GE	Version
Order No.	<a href="#">1693890000</a>	Z-series, Cross-connector, 24 A
GTIN (EAN)	4008190883737	
Qty.	5 pc(s).	
Type	ZQV 2.5N/10 GE	Version
Order No.	<a href="#">1693880000</a>	Z-series, Cross-connector, 24 A
GTIN (EAN)	4008190883720	
Qty.	20 pc(s).	
Type	ZQV 2.5N/20 GE	Version
Order No.	<a href="#">1909000000</a>	Z-series, Cross-connector, 24 A
GTIN (EAN)	4032248535613	
Qty.	20 pc(s).	

Creation date May 3, 2020 11:16:20 AM CEST



**Data sheet**

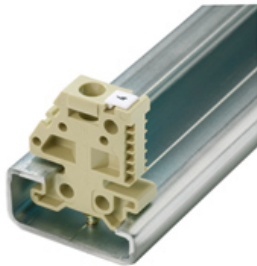
**Z-series  
ZDL 2.5/SI/DU**

**Weidmüller Interface GmbH & Co. KG**  
 Klingenbergstraße 26  
 D-32758 Detmold  
 Germany  
 Fon: +49 5231 14-0  
 Fax: +49 5231 14-292083  
 www.weidmueller.com

**Accessories**

Type	ZQV 2.5N/4 GE	Version	
Order No.	<a href="#">1693820000</a>	Z-series, Cross-connector, 24 A	
GTIN (EAN)	4008190883652		
Qty.	60 pc(s).		

**End bracket**



**Klippon® Connect with clamping yoke Technology**

The high reliability and variety of designs of the terminal blocks with clamping yoke connections make planning easier and optimises operational safety. Klippon® Connect provides a proven response to a range of different requirements.

**General ordering data**

Type	EW 35	Version	
Order No.	<a href="#">0383560000</a>	Accessories, End bracket	
GTIN (EAN)	4008190181314		
Qty.	50 pc(s).		
Type	EW 35 GR 7032	Version	
Order No.	<a href="#">0383530000</a>	Accessories, End bracket	
GTIN (EAN)	4008190027322		
Qty.	50 pc(s).		
Type	EW 35/SCHA/M3	Version	
Order No.	<a href="#">0258660000</a>	Accessories, End bracket	
GTIN (EAN)	4008190033477		
Qty.	20 pc(s).		

## Z-series ZDL 2.5/SI/DU

**Weidmüller Interface GmbH & Co. KG**  
 Klingenbergstraße 26  
 D-32758 Detmold  
 Germany  
 Fon: +49 5231 14-0  
 Fax: +49 5231 14-292083  
 www.weidmueller.com

# Accessories

## Custom printing



The Dekafix (DEK) marker is the universal marker for all conductor and plug-in connectors as well as for electronic sub-assemblies. The system is ideal for short number sequences and covers a wide range of ready-printed markers.

Strips for fast installation in only one work step. The printing is easy to read, rich in contrast and available in various widths.

- Large range of ready-to-use markers
- Strips for fast installation
- Terminal markers, suitable for all Weidmüller cable connectors
- Available as blank MultiCard or with standard printing

**For custom printing:** Please send us a file of our labeling software M-Print PRO or M-Print PRO Online (without installation) for your labeling specifications.

## General ordering data

Type	DEK 5/5 MC SDR	Version
Order No.	<a href="#">1609810000</a>	Dekafix, Terminal marker, 5 x 5 mm, Pitch in mm (P): 5.00
GTIN (EAN)	4008190456597	Weidmueller, To customer specification
Qty.	200 pc(s).	

## End brackets



### Klippon® Connect with clamping yoke Technology

The high reliability and variety of designs of the terminal blocks with clamping yoke connections make planning easier and optimises operational safety. Klippon® Connect provides a proven response to a range of different requirements.

## General ordering data

Type	WEW 35/1	Version
Order No.	<a href="#">1059000000</a>	W-Series, End bracket
GTIN (EAN)	4008190172282	
Qty.	50 pc(s).	
Type	WEW 35/2	Version
Order No.	<a href="#">1061200000</a>	W-Series, End bracket
GTIN (EAN)	4008190030230	
Qty.	100 pc(s).	