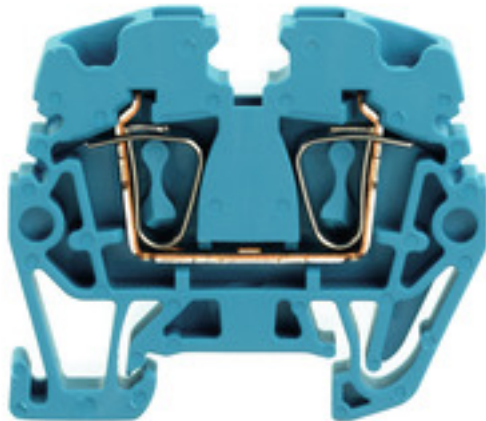


**Z-series
ZDUA 2.5-2 BL**

Weidmüller Interface GmbH & Co. KG
 Klingenbergstraße 26
 D-32758 Detmold
 Germany
 Fon: +49 5231 14-0
 Fax: +49 5231 14-292083
 www.weidmueller.com

Product image



Spring connection with tension clamp Technology

Tension clamp technology is a universal contact system for all common conductor connection types. Its fantastic level of flexibility makes the tension clamp a profitable alternative connection.

General ordering data

| | |
|------------|--|
| Type | ZDUA 2.5-2 BL |
| Order No. | 1720930000 |
| Version | Z-series, Feed-through terminal, Rated cross-section: 2.5 mm ² , Tension-clamp connection, blue |
| GTIN (EAN) | 4008 190376796 |
| Qty. | 100 pc(s). |

Creation date May 3, 2020 11:13:35 AM CEST

Z-series
ZDUA 2.5-2 BL

Weidmüller Interface GmbH & Co. KG
 Klingenbergstraße 26
 D-32758 Detmold
 Germany
 Fon: +49 5231 14-0
 Fax: +49 5231 14-292083
 www.weidmueller.com

Technical data**Dimensions and weights**

| | | | |
|--------------------------|---------|-----------------|------------|
| Width | 5.1 mm | Width (inches) | 0.201 inch |
| Height | 35 mm | Height (inches) | 1.378 inch |
| Depth | 30 mm | Depth (inches) | 1.181 inch |
| Depth including DIN rail | 30.5 mm | Net weight | 3.6 g |

Temperatures

| | | | |
|----------------------------------|---|----------------------------------|---------------|
| Operating temperature range | For operating temperature range see EC Design Test Certificate / IEC Ex-Certificate of Conformity | Storage temperature, max. | 40 °C |
| Storage temperature, min. | 10 °C | Storage temperature | 10 °C...40 °C |
| Continuous operating temp., min. | -50 °C | Continuous operating temp., max. | 120 °C |

Material data

| | | | |
|---------------------------|-------|--------|------|
| Material | Wemid | Colour | blue |
| UL 94 flammability rating | V-0 | | |

Rating data IECEx/ATEX

| | | | |
|--------------------------------|---|---------------------------------|-------------------|
| Certificate No. (ATEX) | KEMA97ATEX4678U | Certificate No. (IECEX) | IECEXULD16.0036U |
| Max. voltage (ATEX) | 275 V | Current (ATEX) | 20 A |
| Wire cross section max. (ATEX) | 2.5 mm ² | Max. voltage (IECEX) | 352 V |
| Current (IECEX) | 20 A | Wire cross section max. (IECEX) | 4 mm ² |
| Operating temperature range | For operating temperature range see EC Design Test Certificate / IEC Ex-Certificate of Conformity | Marking EN 60079-7 | Ex eb II C Gb |
| Ex 2014/34/EU label | II 2 G D | | |

System specifications

| | | | |
|-------------------------------------|--|-------------------------------|-----|
| Version | Tension-clamp connection, for plug-in cross-connector, One end without connector | End cover plate required | Yes |
| Number of potentials | 1 | Number of levels | 1 |
| Number of clamping points per level | 2 | Number of potentials per tier | 1 |
| Levels cross-connected internally | No | PE connection | No |
| Rail | TS 15 | N-function | Yes |
| PE function | No | PEN function | No |

Additional technical data

| | | | |
|--------------------------|---------|------------|-------|
| Explosion-tested version | Yes | Open sides | right |
| Type of mounting | Snap-on | | |

CSA rating data

| | | | |
|-------------------------------|----------------|-------------------------------|--------|
| Certificate No. (CSA) | 200039-1152892 | Current size B (CSA) | 20 A |
| Voltage size B (CSA) | 600 V | Wire cross section max. (CSA) | 12 AWG |
| Wire cross section min. (CSA) | 26 AWG | | |

Z-series
ZDUA 2.5-2 BL

Weidmüller Interface GmbH & Co. KG
 Klingenbergstraße 26
 D-32758 Detmold
 Germany
 Fon: +49 5231 14-0
 Fax: +49 5231 14-292083
 www.weidmueller.com

Technical data**Conductors for clamping (rated connection)**

| | | | |
|---|----------------------|---|--------------------------|
| Blade size | 0.6 x 3.5 mm | Clamping range, max. | 4 mm ² |
| Clamping range, min. | 0.13 mm ² | Connection direction | top |
| Gauge to IEC 60947-1 | A2 | Number of connections | 2 |
| Stripping length | 10 mm | Type of connection | Tension-clamp connection |
| Wire connection cross section AWG, max. | AWG 12 | Wire connection cross section AWG, min. | AWG 26 |
| Wire connection cross section, finely stranded, max. | 2.5 mm ² | Wire connection cross-section, finely stranded with wire-end ferrules DIN 46228/1, max. | 1.5 mm ² |
| Wire connection cross-section, finely stranded with wire-end ferrules DIN 46228/1, min. | 0.5 mm ² | Wire connection cross-section, finely stranded, min. | 0.5 mm ² |
| Wire connection cross-section, solid core, max. | 4 mm ² | Wire connection cross-section, solid core, min. | 0.5 mm ² |

Dimensions

| | |
|--------------|---------|
| TS 15 offset | 17.5 mm |
|--------------|---------|

Rating data

| | | | |
|---|---------------------|--|---------|
| Rated cross-section | 2.5 mm ² | Rated voltage | 500 V |
| Rated current | 24 A | Current at maximum wires | 30 A |
| Standards | IEC 60947-7-1 | Volume resistance according to IEC 60947-7-x | 1.33 mΩ |
| Power loss in accordance with IEC 60947-7-x | 0.77 W | Rated impulse withstand voltage | 6 kV |
| Pollution severity | 3 | | |

UL rating data

| | | | |
|---|--------|---|--------|
| Certificate No. (UR) | E60693 | Conductor size Factory wiring max. (UR) | 12 AWG |
| Conductor size Factory wiring min. (UR) | 26 AWG | Conductor size Field wiring max. (UR) | 12 AWG |
| Conductor size Field wiring min. (UR) | 26 AWG | Current size C (UR) | 20 A |
| Voltage size C (UR) | 600 V | | |

Classifications

| | | | |
|-------------|-------------|------------|-------------|
| ETIM 6.0 | EC000897 | ETIM 7.0 | EC000897 |
| eClass 9.0 | 27-14-11-20 | eClass 9.1 | 27-14-11-20 |
| eClass 10.0 | 27-14-11-20 | UNSPSC | 30-21-18-11 |

Approvals

Approvals



ROHS

Conform

Creation date May 3, 2020 11:13:35 AM CEST

Catalogue status 17.04.2020 / We reserve the right to make technical changes.

3

Data sheet**Z-series
ZDUA 2.5-2 BL**

Weidmüller Interface GmbH & Co. KG
Klingenbergstraße 26
D-32758 Detmold
Germany
Fon: +49 5231 14-0
Fax: +49 5231 14-292083
www.weidmueller.com

Technical data**Downloads**

| | |
|---|--|
| Approval/Certificate/Document of Conformity | Attestation of Conformity ATEX Certificate IECEX Certificate CB Test Certificate CB Certificate DE_PT1111_20160418_1294_ISSUE01.pdf |
| Brochure/Catalogue | CAT 1 TERM 16/17 EN |
| Engineering Data | EPLAN, WSCAD, Zuken E3.S |
| Engineering Data | STEP |
| User Documentation | NTI ZDUA-ZPEA 2.5-2 StorageConditionsTerminalBlocks |

Safety note

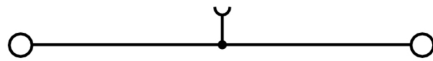
| | |
|---------------|------------------------------------|
| Safety notice | Safety Information |
|---------------|------------------------------------|

Data sheet

Z-series
ZDUA 2.5-2 BL

Weidmüller Interface GmbH & Co. KG
Klingenbergstraße 26
D-32758 Detmold
Germany
Fon: +49 5231 14-0
Fax: +49 5231 14-292083
www.weidmueller.com

Drawings



Data sheet

Z-series ZDUA 2.5-2 BL

Weidmüller Interface GmbH & Co. KG
 Klingenbergstraße 26
 D-32758 Detmold
 Germany
 Fon: +49 5231 14-0
 Fax: +49 5231 14-292083
 www.weidmueller.com

Accessories

Slotted screwdriver

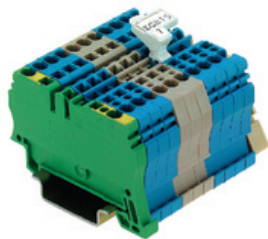
Slotted screwdriver with rounded blade SD DIN 5265, ISO 2380/2, output to DIN 5264, ISO 2380/1. ChromTop tip, SoftFinish grip



General ordering data

| Type | SDS 0.6X3.5X100 | Version |
|------------|----------------------------|---|
| Order No. | 9008330000 | Screwdriver, Blade width (B): 3.5 mm, Blade length: 100 mm, Blade thickness (A): 0.6 mm |
| GTIN (EAN) | 4032248056286 | |
| Qty. | 1 pc(s). | |

ZGB pivotable group tag holder



The ZGB 15 is a hinged group tag carrier. The tag carrier can hold the dekafix 5, WS 12/5 terminal markers or the inlay tag ESO 15.
 The ZGB 30 is a hinged group tag carrier. The tag carrier can hold the dekafix 5, WS 12/5 terminal markers or the inlay tag ESO 7.
 Inlay tags and protective strips can be found under "Accessories".

General ordering data

| Type | ZGB 15 | Version |
|------------|----------------------------|---|
| Order No. | 1636530000 | Terminal markers, Terminal marker, 15 x 7 mm, Pitch in mm (P): 5.00 |
| GTIN (EAN) | 4008190297053 | Weidmueller, white |
| Qty. | 20 pc(s). | |
| Type | ZGB 30 | Version |
| Order No. | 1611930000 | Terminal markers, Terminal marker, 32 x 7 mm, Pitch in mm (P): 5.00 |
| GTIN (EAN) | 4008190002251 | white |
| Qty. | 20 pc(s). | |

Data sheet

**Z-series
ZDUA 2.5-2 BL**

Weidmüller Interface GmbH & Co. KG
 Klingenbergstraße 26
 D-32758 Detmold
 Germany
 Fon: +49 5231 14-0
 Fax: +49 5231 14-292083
 www.weidmueller.com

Accessories

End plates



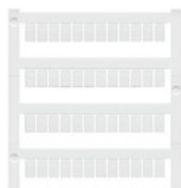
Spring connection with tension clamp Technology

Tension clamp technology is a universal contact system for all common conductor connection types. Its fantastic level of flexibility makes the tension clamp a profitable alternative connection.

General ordering data

| | | |
|------------|----------------------------|---------------------------------------|
| Type | ZAP/TW ZDUA OR | Version |
| Order No. | 1720980000 | Z-series, End plate, Separation plate |
| GTIN (EAN) | 4008190376574 | |
| Qty. | 50 pc(s). | |
| Type | ZAP/TW ZDUA BL | Version |
| Order No. | 1720970000 | Z-series, End plate, Separation plate |
| GTIN (EAN) | 4008190376567 | |
| Qty. | 50 pc(s). | |
| Type | ZAP/TW ZDUA | Version |
| Order No. | 1720960000 | Z-series, End plate, Separation plate |
| GTIN (EAN) | 4008190376550 | |
| Qty. | 50 pc(s). | |

Blank



WS markers are the perfect match for the W-series connectors. Thanks to their system compatibility, the WS tags can also be used with the I-series and the Z-series. The large marking surfaces do not only permit long character strings but also multi-line text. WS markers are ideal for labels with long, customised character strings. Thanks to the proven MultiCard format, printing with laser printer, PrintJet ADVANCED, plotter or MC-Mobilo is possible.

- Can be fitted in strips or individually
- Markers in proven MultiCard format

For custom printing: Please send us a file of our labeling software M-Print PRO or M-Print PRO Online (without installation) for your labeling specifications.

General ordering data

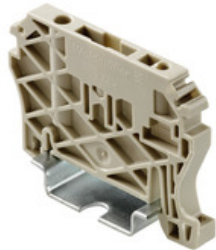
| | | |
|------------|----------------------------|---|
| Type | WS 8/5 MC NE WS | Version |
| Order No. | 1640740000 | WS, Terminal marker, 8 x 5 mm, Pitch in mm (P): 5.00 Weidmueller, |
| GTIN (EAN) | 4008190279103 | Allen-Bradley, white |
| Qty. | 720 pc(s). | |

Z-series ZDUA 2.5-2 BL

Weidmüller Interface GmbH & Co. KG
 Klingenbergstraße 26
 D-32758 Detmold
 Germany
 Fon: +49 5231 14-0
 Fax: +49 5231 14-292083
 www.weidmueller.com

Accessories

End brackets



Spring connection with tension clamp Technology

Tension clamp technology is a universal contact system for all common conductor connection types. Its fantastic level of flexibility makes the tension clamp a profitable alternative connection.

General ordering data

| | | |
|------------|----------------------------|--------------------------|
| Type | ZEW 15 | Version |
| Order No. | 7920340000 | Accessories, End bracket |
| GTIN (EAN) | 4032248238910 | |
| Qty. | 20 pc(s). | |

ZQV 2.5N



Spring connection with tension clamp Technology

Tension clamp technology is a universal contact system for all common conductor connection types. Its fantastic level of flexibility makes the tension clamp a profitable alternative connection.

General ordering data

| | | |
|------------|----------------------------|---------------------------------|
| Type | ZQV 2.5N/3 GE | Version |
| Order No. | 1693810000 | Z-series, Cross-connector, 24 A |
| GTIN (EAN) | 4008190883645 | |
| Qty. | 60 pc(s). | |
| Type | ZQV 2.5N/7 GE | Version |
| Order No. | 1693850000 | Z-series, Cross-connector, 24 A |
| GTIN (EAN) | 4008190883683 | |
| Qty. | 20 pc(s). | |
| Type | ZQV 2.5N/6 GE | Version |
| Order No. | 1693840000 | Z-series, Cross-connector, 24 A |
| GTIN (EAN) | 4008190883676 | |
| Qty. | 20 pc(s). | |
| Type | ZQV 2.5N/8 GE | Version |
| Order No. | 1693860000 | Z-series, Cross-connector, 24 A |
| GTIN (EAN) | 4008190883690 | |
| Qty. | 20 pc(s). | |
| Type | ZQV 2.5N/2 GE | Version |
| Order No. | 1693800000 | Z-series, Cross-connector, 24 A |
| GTIN (EAN) | 4008190883621 | |
| Qty. | 60 pc(s). | |

Data sheet

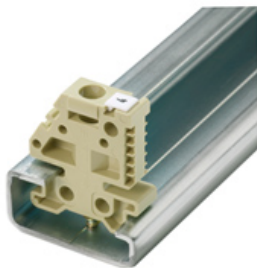
Z-series ZDUA 2.5-2 BL

Weidmüller Interface GmbH & Co. KG
 Klingenbergstraße 26
 D-32758 Detmold
 Germany
 Fon: +49 5231 14-0
 Fax: +49 5231 14-292083
 www.weidmueller.com

Accessories

| | | |
|------------|----------------------------|---------------------------------|
| Type | ZQV 2.5N/5 GE | Version |
| Order No. | 1693830000 | Z-series, Cross-connector, 24 A |
| GTIN (EAN) | 4008190883669 | |
| Qty. | 20 pc(s). | |
| Type | ZQV 2.5N/9 GE | Version |
| Order No. | 1693870000 | Z-series, Cross-connector, 24 A |
| GTIN (EAN) | 4008190883706 | |
| Qty. | 20 pc(s). | |
| Type | ZQV 2.5N/50 GE | Version |
| Order No. | 1693890000 | Z-series, Cross-connector, 24 A |
| GTIN (EAN) | 4008190883737 | |
| Qty. | 5 pc(s). | |
| Type | ZQV 2.5N/10 GE | Version |
| Order No. | 1693880000 | Z-series, Cross-connector, 24 A |
| GTIN (EAN) | 4008190883720 | |
| Qty. | 20 pc(s). | |
| Type | ZQV 2.5N/20 GE | Version |
| Order No. | 1909000000 | Z-series, Cross-connector, 24 A |
| GTIN (EAN) | 4032248535613 | |
| Qty. | 20 pc(s). | |
| Type | ZQV 2.5N/4 GE | Version |
| Order No. | 1693820000 | Z-series, Cross-connector, 24 A |
| GTIN (EAN) | 4008190883652 | |
| Qty. | 60 pc(s). | |

End bracket



Klippon® Connect with clamping yoke Technology

The high reliability and variety of designs of the terminal blocks with clamping yoke connections make planning easier and optimises operational safety. Klippon® Connect provides a proven response to a range of different requirements.

General ordering data

| | | |
|------------|----------------------------|--------------------------|
| Type | EW 15 | Version |
| Order No. | 0382860000 | Accessories, End bracket |
| GTIN (EAN) | 4008190187804 | |
| Qty. | 50 pc(s). | |
| Type | EW 15/2 | Version |
| Order No. | 1071900000 | Accessories, End bracket |
| GTIN (EAN) | 4008190462949 | |
| Qty. | 50 pc(s). | |

Z-series ZDUA 2.5-2 BL

Weidmüller Interface GmbH & Co. KG
 Klingenbergstraße 26
 D-32758 Detmold
 Germany
 Fon: +49 5231 14-0
 Fax: +49 5231 14-292083
 www.weidmueller.com

Accessories

Custom printing



The Dekafix (DEK) marker is the universal marker for all conductor and plug-in connectors as well as for electronic sub-assemblies. The system is ideal for short number sequences and covers a wide range of ready-printed markers.

Strips for fast installation in only one work step. The printing is easy to read, rich in contrast and available in various widths.

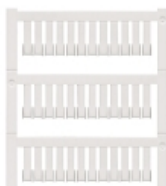
- Large range of ready-to-use markers
- Strips for fast installation
- Terminal markers, suitable for all Weidmüller cable connectors
- Available as blank MultiCard or with standard printing

For custom printing: Please send us a file of our labeling software M-Print PRO or M-Print PRO Online (without installation) for your labeling specifications.

General ordering data

| | | | |
|------------|----------------------------|---|--|
| Type | DEK 5/5 MC SDR | Version | |
| Order No. | 1609810000 | Dekafix, Terminal marker, 5 x 5 mm, Pitch in mm (P): 5.00 | |
| GTIN (EAN) | 4008190456597 | Weidmueller, To customer specification | |
| Qty. | 200 pc(s). | | |

Blank



ZS markers - in proven MultiCard-format - have been developed specifically for the Z-series. They have a large printing area. The hinged mechanism even allows access to cross-connectors without dismantling. Quick installation is guaranteed by the fact that the single tags are clipped on in strips. The single tags are easy to separate.

- Hinged marker area
- Can be fitted in strips or individually
- Markers in proven MultiCard format

For custom printing: Please send us a file of our labeling software M-Print PRO or M-Print PRO Online (without installation) for your labeling specifications.

General ordering data

| | | | |
|------------|----------------------------|--|--|
| Type | ZS 15/5 MC NE WS | Version | |
| Order No. | 1646630000 | ZS, Terminal marker, 15 x 5 mm, Pitch in mm (P): 5.00 Weidmueller, | |
| GTIN (EAN) | 4008190401214 | Allen-Bradley, white | |
| Qty. | 480 pc(s). | | |