

**Z-series
ZDL 2.5 S/L/L**

Weidmüller Interface GmbH & Co. KG
Klingenbergstraße 26
D-32758 Detmold
Germany
Fon: +49 5231 14-0
Fax: +49 5231 14-292083
www.weidmueller.com

Product image**Building installation wiring**

For building installations, we offer a complete system that revolves around the 10×3 copper rail and comprises perfectly coordinated components: from installation terminal blocks, neutral conductor terminal blocks and distribution terminal blocks to comprehensive accessories such as busbars and busbar holders.

General ordering data

| | |
|------------|--|
| Type | ZDL 2.5 S/L/L |
| Order No. | 1720760000 |
| Version | Z-series, Installation multi-tier terminal, Rated cross-section: 2.5 mm ² , Tension-clamp connection, dark beige, Direct mounting |
| GTIN (EAN) | 4008190380403 |
| Qty. | 50 pc(s). |

Creation date May 3, 2020 11:16:52 AM CEST

Catalogue status 17.04.2020 / We reserve the right to make technical changes.

**Z-series
ZDL 2.5 S/L/L**

Weidmüller Interface GmbH & Co. KG
 Klingenbergstraße 26
 D-32758 Detmold
 Germany
 Fon: +49 5231 14-0
 Fax: +49 5231 14-292083
 www.weidmueller.com

Technical data
Dimensions and weights

| | | | |
|------------|---------|-----------------|------------|
| Width | 5.1 mm | Width (inches) | 0.201 inch |
| Height | 95 mm | Height (inches) | 3.74 inch |
| Depth | 48 mm | Depth (inches) | 1.89 inch |
| Net weight | 12.06 g | | |

Temperatures

| | | | |
|----------------------------------|---------------|----------------------------------|--------|
| Storage temperature, max. | 40 °C | Storage temperature, min. | 10 °C |
| Storage temperature | 10 °C...40 °C | Continuous operating temp., min. | -50 °C |
| Continuous operating temp., max. | 120 °C | | |

Material data

| | | | |
|---------------------------|-------|--------|------------|
| Material | Wemid | Colour | dark beige |
| UL 94 flammability rating | V-0 | | |

System specifications

| | | | |
|-------------------------------------|---|-------------------------------|-----|
| Version | 3-conductor installation terminal, Tension-clamp connection, for plug-in cross-connector, One end without connector | End cover plate required | Yes |
| Number of potentials | 2 | Number of levels | 2 |
| Number of clamping points per level | 2 | Number of potentials per tier | 1 |
| Levels cross-connected internally | No | PE connection | No |
| Rail | TS 35 | N-function | No |
| PE function | No | PEN function | No |

Additional technical data

| | | | |
|--------------------------|-------|---------------------|-----------------|
| Explosion-tested version | No | Installation advice | Direct mounting |
| Open sides | right | Type of mounting | Snap-on |

CSA rating data

| | | | |
|-------------------------------|----------------|-------------------------------|--------|
| Certificate No. (CSA) | 154685-1142891 | Current size D (CSA) | 10 A |
| Voltage size D (CSA) | 300 V | Wire cross section max. (CSA) | 12 AWG |
| Wire cross section min. (CSA) | 26 AWG | | |

Z-series
ZDL 2.5 S/L/L

Weidmüller Interface GmbH & Co. KG
 Klingenbergstraße 26
 D-32758 Detmold
 Germany
 Fon: +49 5231 14-0
 Fax: +49 5231 14-292083
 www.weidmueller.com

Technical data
Conductors for clamping (rated connection)

| | | | |
|---|----------------------|---|--------------------------|
| Blade size | 0.6 x 3.5 mm | Clamping range, max. | 4 mm ² |
| Clamping range, min. | 0.13 mm ² | Connection direction | Inclined / angled |
| Gauge to IEC 60947-1 | A2 | Number of connections | 4 |
| Stripping length | 8 mm | Type of connection | Tension-clamp connection |
| Wire connection cross section AWG, max. | AWG 12 | Wire connection cross section AWG, min. | AWG 26 |
| Wire connection cross section, finely stranded, max. | 4 mm ² | Wire connection cross-section, finely stranded with wire-end ferrules DIN 46228/1, max. | 2.5 mm ² |
| Wire connection cross-section, finely stranded with wire-end ferrules DIN 46228/1, min. | 0.5 mm ² | Wire connection cross-section, finely stranded with wire-end ferrules DIN 46228/4, max. | 2.5 mm ² |
| Wire connection cross-section, finely stranded with wire-end ferrules DIN 46228/4, min. | 0.5 mm ² | Wire connection cross-section, finely stranded, min. | 0.5 mm ² |
| Wire connection cross-section, solid core, max. | 4 mm ² | Wire connection cross-section, solid core, min. | 0.5 mm ² |

Disconnect terminals

| | |
|--------------|-----------|
| For N-busbar | 10 x 3 mm |
|--------------|-----------|

PE rating data

| | |
|--------------|----|
| PEN function | No |
|--------------|----|

Rating data

| | | | |
|---|---------------------|--|---------|
| Rated cross-section | 2.5 mm ² | Rated voltage | 400 V |
| Rated current | 24 A | Current at maximum wires | 24 A |
| Standards | IEC 60947-7-1 | Volume resistance according to IEC 60947-7-x | 1.33 mΩ |
| Power loss in accordance with IEC 60947-7-x | 0.77 W | Rated impulse withstand voltage | 6 kV |
| Pollution severity | 3 | | |

UL rating data

| | | | |
|---|--------|---|--------|
| Certificate No. (UR) | E60693 | Conductor size Factory wiring max. (UR) | 12 AWG |
| Conductor size Factory wiring min. (UR) | 26 AWG | Conductor size Field wiring max. (UR) | 12 AWG |
| Conductor size Field wiring min. (UR) | 26 AWG | Current size B (UR) | 15 A |
| Current size D (UR) | 10 A | Voltage size B (UR) | 300 V |
| Voltage size D (UR) | 300 V | | |

Classifications

| | | | |
|-------------|-------------|------------|-------------|
| ETIM 6.0 | EC001329 | ETIM 7.0 | EC001329 |
| eClass 9.0 | 27-14-11-25 | eClass 9.1 | 27-14-11-25 |
| eClass 10.0 | 27-14-11-25 | UNSPSC | 30-21-18-11 |

Data sheet**Z-series**
ZDL 2.5 S/L/L**Weidmüller Interface GmbH & Co. KG**
Klingenbergstraße 26
D-32758 Detmold
Germany
Fon: +49 5231 14-0
Fax: +49 5231 14-292083
www.weidmueller.com**Technical data****Approvals**

Approvals



ROHS

Conform

DownloadsApproval/Certificate/Document of
Conformity[DE_PT1103_20160418_1104_ISSUE01.pdf](#)

Engineering Data

[EPLAN_WSCAD](#)

Engineering Data

[STEP](#)

User Documentation

[StorageConditionsTerminalBlocks](#)**Safety note**

Safety notice

[Safety Information](#)

Data sheet

**Z-series
ZDL 2.5 S/L/L**

Weidmüller Interface GmbH & Co. KG
 Klingenbergstraße 26
 D-32758 Detmold
 Germany
 Fon: +49 5231 14-0
 Fax: +49 5231 14-292083
 www.weidmueller.com

Accessories

Slotted screwdriver

Slotted screwdriver with rounded blade SD DIN 5265, ISO 2380/2, output to DIN 5264, ISO 2380/1. ChromTop tip, SoftFinish grip



General ordering data

| | | |
|------------|----------------------------|---|
| Type | SDS 0.6X3.5X100 | Version |
| Order No. | 9008330000 | Screwdriver, Blade width (B): 3.5 mm, Blade length: 100 mm, Blade thickness (A): 0.6 mm |
| GTIN (EAN) | 4032248056286 | |
| Qty. | 1 pc(s). | |

Bus bars



Building installation wiring

For building installations, we offer a complete system that revolves around the 10×3 copper rail and comprises perfectly coordinated components: from installation terminal blocks, neutral conductor terminal blocks and distribution terminal blocks to comprehensive accessories such as busbars and busbar holders.

General ordering data

| | | |
|------------|----------------------------|-----------------------------|
| Type | SSCH 10X3X1000 CU/SN | Version |
| Order No. | 0348900000 | Accessories, Busbar, Copper |
| GTIN (EAN) | 4008190024802 | |
| Qty. | 1 m | |

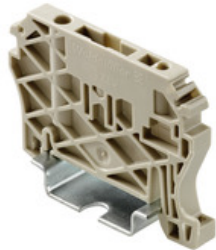
Data sheet

**Z-series
ZDL 2.5 S/L/L**

Weidmüller Interface GmbH & Co. KG
 Klingenbergstraße 26
 D-32758 Detmold
 Germany
 Fon: +49 5231 14-0
 Fax: +49 5231 14-292083
 www.weidmueller.com

Accessories

End brackets



Spring connection with tension clamp Technology

Tension clamp technology is a universal contact system for all common conductor connection types. Its fantastic level of flexibility makes the tension clamp a profitable alternative connection.

General ordering data

| | | |
|------------|----------------------------|-----------------------|
| Type | ZEW 35/2 | Version |
| Order No. | 8630740000 | Z-series, End bracket |
| GTIN (EAN) | 4032248348916 | |
| Qty. | 20 pc(s). | |
| Type | ZEW 35 | Version |
| Order No. | 9540000000 | Z-series, End bracket |
| GTIN (EAN) | 4008190956264 | |
| Qty. | 20 pc(s). | |

End plates



Building installation wiring

For building installations, we offer a complete system that revolves around the 10×3 copper rail and comprises perfectly coordinated components: from installation terminal blocks, neutral conductor terminal blocks and distribution terminal blocks to comprehensive accessories such as busbars and busbar holders.

General ordering data

| | | |
|------------|----------------------------|---------------------|
| Type | ZAP ZDL2.5S | Version |
| Order No. | 1720900000 | Z-series, End plate |
| GTIN (EAN) | 4008190381059 | |
| Qty. | 20 pc(s). | |

**Z-series
ZDL 2.5 S/L/L**

Weidmüller Interface GmbH & Co. KG
 Klingenbergstraße 26
 D-32758 Detmold
 Germany
 Fon: +49 5231 14-0
 Fax: +49 5231 14-292083
 www.weidmueller.com

Accessories**ZQV 2.5N****Spring connection with tension clamp Technology**

Tension clamp technology is a universal contact system for all common conductor connection types. Its fantastic level of flexibility makes the tension clamp a profitable alternative connection.

General ordering data

| | | |
|------------|----------------------------|---------------------------------|
| Type | ZQV 2.5N/3 GE | Version |
| Order No. | 1693810000 | Z-series, Cross-connector, 24 A |
| GTIN (EAN) | 4008190883645 | |
| Qty. | 60 pc(s). | |
| Type | ZQV 2.5N/7 GE | Version |
| Order No. | 1693850000 | Z-series, Cross-connector, 24 A |
| GTIN (EAN) | 4008190883683 | |
| Qty. | 20 pc(s). | |
| Type | ZQV 2.5N/6 GE | Version |
| Order No. | 1693840000 | Z-series, Cross-connector, 24 A |
| GTIN (EAN) | 4008190883676 | |
| Qty. | 20 pc(s). | |
| Type | ZQV 2.5N/8 GE | Version |
| Order No. | 1693860000 | Z-series, Cross-connector, 24 A |
| GTIN (EAN) | 4008190883690 | |
| Qty. | 20 pc(s). | |
| Type | ZQV 2.5N/2 GE | Version |
| Order No. | 1693800000 | Z-series, Cross-connector, 24 A |
| GTIN (EAN) | 4008190883621 | |
| Qty. | 60 pc(s). | |
| Type | ZQV 2.5N/5 GE | Version |
| Order No. | 1693830000 | Z-series, Cross-connector, 24 A |
| GTIN (EAN) | 4008190883669 | |
| Qty. | 20 pc(s). | |
| Type | ZQV 2.5N/9 GE | Version |
| Order No. | 1693870000 | Z-series, Cross-connector, 24 A |
| GTIN (EAN) | 4008190883706 | |
| Qty. | 20 pc(s). | |
| Type | ZQV 2.5N/50 GE | Version |
| Order No. | 1693890000 | Z-series, Cross-connector, 24 A |
| GTIN (EAN) | 4008190883737 | |
| Qty. | 5 pc(s). | |
| Type | ZQV 2.5N/10 GE | Version |
| Order No. | 1693880000 | Z-series, Cross-connector, 24 A |
| GTIN (EAN) | 4008190883720 | |
| Qty. | 20 pc(s). | |
| Type | ZQV 2.5N/20 GE | Version |
| Order No. | 1909000000 | Z-series, Cross-connector, 24 A |
| GTIN (EAN) | 4032248535613 | |
| Qty. | 20 pc(s). | |

Creation date May 3, 2020 11:16:52 AM CEST

Data sheet

**Z-series
ZDL 2.5 S/L/L**

Weidmüller Interface GmbH & Co. KG
 Klingenbergstraße 26
 D-32758 Detmold
 Germany
 Fon: +49 5231 14-0
 Fax: +49 5231 14-292083
 www.weidmueller.com

Accessories

| | | |
|------------|----------------------------|---------------------------------|
| Type | ZQV 2.5N/4 GE | Version |
| Order No. | 1693820000 | Z-series, Cross-connector, 24 A |
| GTIN (EAN) | 4008190883652 | |
| Qty. | 60 pc(s). | |

End bracket



Klippon® Connect with clamping yoke Technology

The high reliability and variety of designs of the terminal blocks with clamping yoke connections make planning easier and optimises operational safety. Klippon® Connect provides a proven response to a range of different requirements.

General ordering data

| | | |
|------------|----------------------------|--------------------------|
| Type | EW 35 | Version |
| Order No. | 0383560000 | Accessories, End bracket |
| GTIN (EAN) | 4008190181314 | |
| Qty. | 50 pc(s). | |

| | | |
|------------|----------------------------|--------------------------|
| Type | EW 35/SCHA/M3 | Version |
| Order No. | 0258660000 | Accessories, End bracket |
| GTIN (EAN) | 4008190033477 | |
| Qty. | 20 pc(s). | |

Busbar connections



Building installation wiring

For building installations, we offer a complete system that revolves around the 10×3 copper rail and comprises perfectly coordinated components: from installation terminal blocks, neutral conductor terminal blocks and distribution terminal blocks to comprehensive accessories such as busbars and busbar holders.

General ordering data

| | | |
|------------|----------------------------|---|
| Type | ZB 16K BL | Version |
| Order No. | 0502880000 | Accessories, Clamping yoke for busbar, Rated cross-section: Clamping yoke, PA, blue, Feed-through (bushing) |
| GTIN (EAN) | 4008190014186 | |
| Qty. | 50 pc(s). | |

| | | |
|------------|----------------------------|--|
| Type | ZB 16K SW | Version |
| Order No. | 0502810000 | Accessories, Clamping yoke for busbar, Rated cross-section: Clamping yoke, PA, black, Feed-through (bushing) |
| GTIN (EAN) | 4008190332563 | |
| Qty. | 50 pc(s). | |

| | | |
|------------|----------------------------|---|
| Type | ZB 4/6K GE/GN | Version |
| Order No. | 0565460000 | Accessories, Clamping yoke for busbar, Rated cross-section: Clamping yoke, PA, Green/yellow, Feed-through (bushing) |
| GTIN (EAN) | 4008190032609 | |
| Qty. | 50 pc(s). | |

Creation date May 3, 2020 11:16:52 AM CEST

Z-series
ZDL 2.5 S/L/L

Weidmüller Interface GmbH & Co. KG
 Klingenbergstraße 26
 D-32758 Detmold
 Germany
 Fon: +49 5231 14-0
 Fax: +49 5231 14-292083
 www.weidmueller.com

Accessories

| | | |
|------------|----------------------------|--|
| Type | ZB 4 | Version |
| Order No. | 0316500000 | Accessories, Clamping yoke for busbar, Rated cross-section: Clamping |
| GTIN (EAN) | 4008190061999 | yoke, Feed-through (bushing) |
| Qty. | 50 pc(s). | |
| Type | ZB 35K SW M6X16 | Version |
| Order No. | 0502610000 | Accessories, Clamping yoke for busbar, Rated cross-section: Clamping |
| GTIN (EAN) | 4008190332587 | yoke, PA, black, Feed-through (bushing) |
| Qty. | 20 pc(s). | |
| Type | ZB 4G BL | Version |
| Order No. | 0322180000 | Accessories, Clamping yoke for busbar, Rated cross-section: Clamping |
| GTIN (EAN) | 4008190050504 | yoke, PA, blue, Feed-through (bushing) |
| Qty. | 50 pc(s). | |
| Type | ZB 4/6 | Version |
| Order No. | 0556700000 | Accessories, Clamping yoke for busbar, Rated cross-section: Clamping |
| GTIN (EAN) | 4008190188412 | yoke, Feed-through (bushing) |
| Qty. | 50 pc(s). | |
| Type | ZB 4K SW | Version |
| Order No. | 0475310000 | Accessories, Clamping yoke for busbar, Rated cross-section: Clamping |
| GTIN (EAN) | 4008190008406 | yoke, PA, Feed-through (bushing) |
| Qty. | 50 pc(s). | |
| Type | ZB 4/6K BL | Version |
| Order No. | 0565480000 | Accessories, Clamping yoke for busbar, Rated cross-section: Clamping |
| GTIN (EAN) | 4008190086831 | yoke, PA, blue, Feed-through (bushing) |
| Qty. | 50 pc(s). | |
| Type | ZB 35/M6X16 | Version |
| Order No. | 0266500000 | Accessories, Clamping yoke for busbar, Rated cross-section: Clamping |
| GTIN (EAN) | 4008190102814 | yoke, Feed-through (bushing) |
| Qty. | 20 pc(s). | |
| Type | ZB 16K GE/GN | Version |
| Order No. | 0502860000 | Accessories, Clamping yoke for busbar, Rated cross-section: Clamping |
| GTIN (EAN) | 4008190188795 | yoke, PA, Green/yellow, Feed-through (bushing) |
| Qty. | 50 pc(s). | |
| Type | ZB 35K GE/GN M6X16 | Version |
| Order No. | 0502660000 | Accessories, Clamping yoke for busbar, Rated cross-section: Clamping |
| GTIN (EAN) | 4008190052294 | yoke, PA, Green/yellow, Feed-through (bushing) |
| Qty. | 20 pc(s). | |
| Type | ZB 4K GE/GN | Version |
| Order No. | 0475360000 | Accessories, Clamping yoke for busbar, Rated cross-section: Clamping |
| GTIN (EAN) | 4008190188047 | yoke, PA, Green/yellow, Feed-through (bushing) |
| Qty. | 50 pc(s). | |
| Type | ZB 4K GG HENSEL | Version |
| Order No. | 1824560000 | Accessories, Clamping yoke for busbar, Rated cross-section: Clamping |
| GTIN (EAN) | 4032248330973 | yoke, PA, Green/yellow, Feed-through (bushing) |
| Qty. | 50 pc(s). | |
| Type | ZB 16 ZKSC | Version |
| Order No. | 0316600000 | Accessories, Clamping yoke for busbar, Rated cross-section: Clamping |
| GTIN (EAN) | 4008190145989 | yoke, Feed-through (bushing) |
| Qty. | 50 pc(s). | |

Z-series ZDL 2.5 S/L/L

Weidmüller Interface GmbH & Co. KG
 Klingenbergstraße 26
 D-32758 Detmold
 Germany
 Fon: +49 5231 14-0
 Fax: +49 5231 14-292083
 www.weidmueller.com

Accessories

Custom printing



The Dekafix (DEK) marker is the universal marker for all conductor and plug-in connectors as well as for electronic sub-assemblies. The system is ideal for short number sequences and covers a wide range of ready-printed markers.

Strips for fast installation in only one work step. The printing is easy to read, rich in contrast and available in various widths.

- Large range of ready-to-use markers
- Strips for fast installation
- Terminal markers, suitable for all Weidmüller cable connectors
- Available as blank MultiCard or with standard printing

For custom printing: Please send us a file of our labeling software M-Print PRO or M-Print PRO Online (without installation) for your labeling specifications.

General ordering data

| | | |
|------------|----------------------------|---|
| Type | DEK 5/5 MC SDR | Version |
| Order No. | 1609810000 | Dekafix, Terminal marker, 5 x 5 mm, Pitch in mm (P): 5.00 |
| GTIN (EAN) | 4008190456597 | Weidmueller, To customer specification |
| Qty. | 200 pc(s). | |

End brackets



Klippon® Connect with clamping yoke Technology

The high reliability and variety of designs of the terminal blocks with clamping yoke connections make planning easier and optimises operational safety. Klippon® Connect provides a proven response to a range of different requirements.

General ordering data

| | | |
|------------|----------------------------|-----------------------|
| Type | WEW 35/1 | Version |
| Order No. | 1059000000 | W-Series, End bracket |
| GTIN (EAN) | 4008190172282 | |
| Qty. | 50 pc(s). | |
| Type | WEW 35/2 | Version |
| Order No. | 1061200000 | W-Series, End bracket |
| GTIN (EAN) | 4008190030230 | |
| Qty. | 100 pc(s). | |