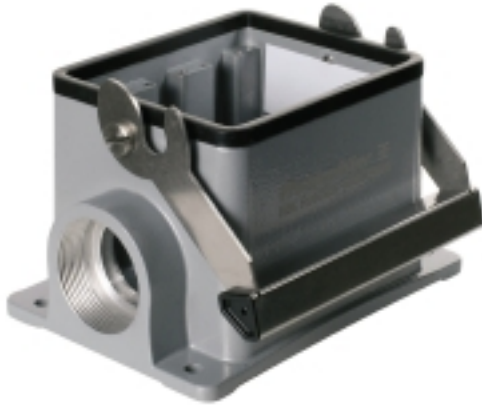


HDC enclosures HDC 48A SLU 1PG29G

Weidmüller Interface GmbH & Co. KG
Klingenbergstraße 26
D-32758 Detmold
Germany
Fon: +49 5231 14-0
Fax: +49 5231 14-292083
www.weidmueller.com



The special die-cast alloy and the multi-layered surface sealing provide complete protection for the HDC housings.

The cleverly designed interlock system is manufactured from stainless steel. This guarantees a long lifespan with high resistance to corrosion and impact.

The housing interlock system provides integrated safety. Our unique, patented spring system provides the housing interlock with a secure grip and prevents accidental opening.

The laser marking allows for easy and quick identification. Each housing is permanently labelled with a laser marking so that each product can be quickly designated and positioned.

Weidmüller RockStar® IP 65 / NEMA Type 4X housings - your first choice for industrial housings with IP 65 protection.

General ordering data

| | |
|------------|--|
| Type | HDC 48A SLU 1PG29G |
| Order No. | 1666770000 |
| Version | HDC enclosures, Size: 9, Protection degree: IP65, Closed base, End-locking clamp, lower side, Standard, Size of cable entries: PG 29 |
| GTIN (EAN) | 4008190423889 |
| Qty. | 1 pc(s). |

**HDC enclosures
HDC 48A SLU 1PG29G**

Weidmüller Interface GmbH & Co. KG
 Klingenbergstraße 26
 D-32758 Detmold
 Germany
 Fon: +49 5231 14-0
 Fax: +49 5231 14-292083
 www.weidmueller.com

Technical data**Dimensions and weights**

| | | | |
|----------------------------|----------|-----------------------------|------------|
| Width | 121.5 mm | Width (inches) | 4.783 inch |
| Height | 79 mm | Height (inches) | 3.11 inch |
| Mounting dimension - width | 112 mm | Mounting dimension - height | 67 mm |
| Net weight | 639 g | | |

Temperatures

| | |
|-------------------|-------------------|
| Limit temperature | -40 °C ... 125 °C |
|-------------------|-------------------|

Environmental Product Compliance

| | |
|------------|--|
| REACH SVHC | Lead 7439-92-1, Potassium perfluorobutane sulfonate 29420-49-3 |
|------------|--|

Dimensions

| | | | |
|----------------------|--------------|----------------------|---------|
| Cable entry | w. threading | Height of base B1 | 5 mm |
| Height of housing B | 79 mm | Hole pitch length A2 | 112 mm |
| Total length housing | 94 mm | Width base C1 | 92.5 mm |
| Width housing C | 82.5 mm | | |

General data

| | | | |
|-----------------------------|-----------------------------|-----------------------|-------------------|
| EMC housings | No | Housing main material | diecast aluminium |
| Material of locking element | Stainless steel, rust-proof | Protection degree | IP65 |
| Surface finish | Powder coating | Tightening torque | 2 Nm |

Version

| | | | |
|------------------------------|----------------------------------|--------------------------------|-------------------|
| Cable entry | w. threading | Clamp version | End-locking clamp |
| Design | Standard | Design of housing | Closed base |
| Design of locking system | End-locking clamp, lower side | Internal thread | PG 29 |
| Number of cable entry on top | 0 | Number of cable entry sideways | 1 |
| Sealing | NBR | Size | 9 |
| Size of cable entries | PG 29 | Suitable for ModuPlug® | No |
| Tightening torque | 2 Nm | Top part/bottom part/lid | lower part |
| Type | Base housing | | |

Classifications

| | | | |
|-------------|-------------|------------|-------------|
| ETIM 6.0 | EC000437 | ETIM 7.0 | EC000437 |
| eClass 9.0 | 27-44-02-02 | eClass 9.1 | 27-44-02-02 |
| eClass 10.0 | 27-44-02-02 | UNSPSC | 30-21-18-01 |

Approvals

Approvals



ROHS Conform

Creation date May 3, 2020 2:58:21 PM CEST

Catalogue status 17.04.2020 / We reserve the right to make technical changes.

2

Data sheet**HDC enclosures
HDC 48A SLU 1PG29G**

Weidmüller Interface GmbH & Co. KG
Klingenbergstraße 26
D-32758 Detmold
Germany
Fon: +49 5231 14-0
Fax: +49 5231 14-292083
www.weidmueller.com

Technical data**Downloads**

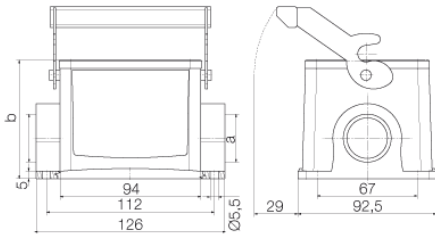
| | |
|-------------------------|---|
| Brochure/Catalogue | CAT 3 HDC 17/18 EN FL FIELDWIRING EN |
| Engineering Data | EPLAN, WSCAD |
| Engineering Data | STEP |
| Technical Documentation | 1666770000_HDC_48A_SLU_1PG29G_STP_Blatt_1.pdf |

Data sheet

**HDC enclosures
HDC 48A SLU 1PG29G**

Weidmüller Interface GmbH & Co. KG
Klingenbergstraße 26
D-32758 Detmold
Germany
Fon: +49 5231 14-0
Fax: +49 5231 14-292083
www.weidmueller.com

Drawings



**HDC enclosures
HDC 48A SLU 1PG29G**

Weidmüller Interface GmbH & Co. KG
 Klingenbergstraße 26
 D-32758 Detmold
 Germany
 Fon: +49 5231 14-0
 Fax: +49 5231 14-292083
 www.weidmueller.com

Accessories
Hood, Cable Entry at top


The special die-cast alloy and the multi-layered surface sealing provide complete protection for the HDC housings.

The cleverly designed interlock system is manufactured from stainless steel. This guarantees a long lifespan with high resistance to corrosion and impact.

The housing interlock system provides integrated safety. Our unique, patented spring system provides the housing interlock with a secure grip and prevents accidental opening.

The laser marking allows for easy and quick identification. Each housing is permanently labelled with a laser marking so that each product can be quickly designated and positioned.

Weidmüller RockStar® IP 65 / NEMA Type 4X housings - your first choice for industrial housings with IP 65 protection.

General ordering data

| | | |
|------------|----------------------------|---|
| Type | HDC 48A TOLU 1PG29G | Version |
| Order No. | 1666730000 | HDC enclosures, Size: 9, Protection degree: IP65, Cable entry from top, Plug housing, End-locking clamp, lower side, Standard, Size of cable entries: PG 29 |
| GTIN (EAN) | 4008190423841 | |
| Qty. | 1 pc(s). | |
| Type | HDC 48A TOLU 1M32G | Version |
| Order No. | 1788560000 | HDC enclosures, Size: 9, Protection degree: IP65, Cable entry from top, Plug housing, End-locking clamp, lower side, Standard, Size of cable entries: M 32 |
| GTIN (EAN) | 4032248206094 | |
| Qty. | 1 pc(s). | |

Hood, Cable Entry sideways


The special die-cast alloy and the multi-layered surface sealing provide complete protection for the HDC housings.

The cleverly designed interlock system is manufactured from stainless steel. This guarantees a long lifespan with high resistance to corrosion and impact.

The housing interlock system provides integrated safety. Our unique, patented spring system provides the housing interlock with a secure grip and prevents accidental opening.

The laser marking allows for easy and quick identification. Each housing is permanently labelled with a laser marking so that each product can be quickly designated and positioned.

Weidmüller RockStar® IP 65 / NEMA Type 4X housings - your first choice for industrial housings with IP 65 protection.

General ordering data

| | | |
|------------|----------------------------|--|
| Type | HDC 48A TSLU 1PG29G | Version |
| Order No. | 1666710000 | HDC enclosures, Size: 9, Protection degree: IP65, Cable entry from side, Plug housing, End-locking clamp, lower side, Standard, Size of cable entries: PG 29 |
| GTIN (EAN) | 4008190448127 | |
| Qty. | 1 pc(s). | |

Data sheet**HDC enclosures
HDC 48A SLU 1PG29G**

Weidmüller Interface GmbH & Co. KG
Klingenbergstraße 26
D-32758 Detmold
Germany
Fon: +49 5231 14-0
Fax: +49 5231 14-292083
www.weidmueller.com

Accessories

| | | |
|------------|----------------------------|--|
| Type | HDC 48A TSLU 1M32G | Version |
| Order No. | 1788550000 | HDC enclosures, Size: 9, Protection degree: IP65, Cable entry from |
| GTIN (EAN) | 4032248206087 | side, Plug housing, End-locking clamp, lower side, Standard, Size of |
| Qty. | 1 pc(s). | cable entries: M 32 |