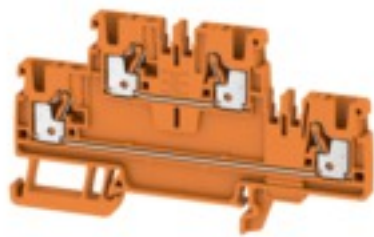


**A-series
A2T 2.5 OR**

Weidmüller Interface GmbH & Co. KG
Klingenbergstraße 26
D-32758 Detmold
Germany
Fon: +49 5231 14-0
Fax: +49 5231 14-292083
www.weidmueller.com

Product image**Spring connection with PUSH IN Technology**

The innovative PUSH IN technology reduces the amount of time you spend on wiring to a minimum. Direct insertion guarantees high conductor pull-out forces and simple handling for all conductor types.

General ordering data

| | |
|------------|---------------------------------------------------------------------------|
| Type | A2T 2.5 OR |
| Order No. | 1547630000 |
| Version | Feed-through terminal, PUSH IN, 2.5 mm ² , 800 V, 24 A, orange |
| GTIN (EAN) | 4050118462852 |
| Qty. | 50 pc(s). |

Creation date May 4, 2020 12:59:30 AM CEST

Catalogue status 17.04.2020 / We reserve the right to make technical changes.

**A-series
A2T 2.5 OR**

Weidmüller Interface GmbH & Co. KG
 Klingenbergstraße 26
 D-32758 Detmold
 Germany
 Fon: +49 5231 14-0
 Fax: +49 5231 14-292083
 www.weidmueller.com

Technical data**Dimensions and weights**

| | | | |
|--------------------------|---------|-----------------|------------|
| Width | 5.1 mm | Width (inches) | 0.201 inch |
| Height | 90 mm | Height (inches) | 3.543 inch |
| Depth | 50.5 mm | Depth (inches) | 1.988 inch |
| Depth including DIN rail | 51 mm | Net weight | 13.17 g |

Temperatures

| | | | |
|----------------------------------|---------------|----------------------------------|--------|
| Storage temperature, max. | 40 °C | Storage temperature, min. | 10 °C |
| Storage temperature | 10 °C...40 °C | Continuous operating temp., min. | -60 °C |
| Continuous operating temp., max. | 130 °C | | |

Material data

| | | | |
|--------------------------------|--------|---------------------------|--------|
| Material | Wemid | Colour | orange |
| Colour of operational elements | orange | UL 94 flammability rating | V-0 |

Rating data IECEx/ATEX

| | | | |
|--------------------------------|---------------------|---------------------------------|---------------------|
| Certificate No. (ATEX) | TUEV16ATEX7909U | Certificate No. (IECEX) | IECEXTUR16.0036U |
| Max. voltage (ATEX) | 550 V | Current (ATEX) | 21 A |
| Wire cross section max. (ATEX) | 2.5 mm ² | Max. voltage (IECEX) | 550 V |
| Current (IECEX) | 21 A | Wire cross section max. (IECEX) | 2.5 mm ² |
| Marking EN 60079-7 | Ex eb II C Gb | Ex 2014/34/EU label | II 2 G D |

System specifications

| | | | |
|--------------------------|-----|-------------------------------------|-------|
| End cover plate required | Yes | Number of potentials | 2 |
| Number of levels | 2 | Number of clamping points per level | 2 |
| PE connection | No | Rail | TS 35 |
| N-function | No | PE function | No |
| PEN function | No | | |

Additional technical data

| | | | |
|---------------------|-------|-------------------|---------|
| Installation advice | Rail | Open sides | right |
| Snap-on | No | Type of fixing | Snap-on |
| Type of mounting | TS 35 | With snap-in pegs | No |

CSA rating data

| | | | |
|-------------------------------|-----------------|-------------------------------|--------|
| Certificate No. (CSA) | 200039-70089609 | Current size B (CSA) | 20 A |
| Current size C (CSA) | 20 A | Current size D (CSA) | 5 A |
| Voltage size B (CSA) | 600 V | Voltage size C (CSA) | 600 V |
| Voltage size D (CSA) | 600 V | Wire cross section max. (CSA) | 12 AWG |
| Wire cross section min. (CSA) | 28 AWG | | |

A-series
A2T 2.5 OR

Weidmüller Interface GmbH & Co. KG
 Klingenbergstraße 26
 D-32758 Detmold
 Germany
 Fon: +49 5231 14-0
 Fax: +49 5231 14-292083
 www.weidmueller.com

Technical data
Conductors for clamping (rated connection)

| | | | |
|-----------------------------------------------------------------------------------------|----------------------|-----------------------------------------------------------------------------------------|----------------------|
| Blade size | 0.6 x 3.5 mm | Clamping range, max. | 2.5 mm ² |
| Clamping range, min. | 0.14 mm ² | Connection cross-section, stranded, max. | 2.5 mm ² |
| Connection cross-section, stranded, min. | 0.5 mm ² | Connection direction | top |
| Gauge to IEC 60947-1 | A3 | Number of connections | 4 |
| Stripping length | 10 mm | Twin wire-end ferrules, max. | 0.75 mm ² |
| Twin wire-end ferrules, min. | 0.5 mm ² | Type of connection | PUSH IN |
| Wire connection cross section AWG, max. | AWG 12 | Wire connection cross section AWG, min. | AWG 28 |
| Wire connection cross section, finely stranded, max. | 2.5 mm ² | Wire connection cross-section, finely stranded with wire-end ferrules DIN 46228/1, max. | 2.5 mm ² |
| Wire connection cross-section, finely stranded with wire-end ferrules DIN 46228/1, min. | 0.5 mm ² | Wire connection cross-section, finely stranded with wire-end ferrules DIN 46228/4, max. | 2.5 mm ² |
| Wire connection cross-section, finely stranded with wire-end ferrules DIN 46228/4, min. | 0.5 mm ² | Wire connection cross-section, finely stranded, min. | 0.5 mm ² |
| Wire connection cross-section, solid core, max. | 2.5 mm ² | Wire connection cross-section, solid core, min. | 0.5 mm ² |

Rating data

| | | | |
|---------------------------------------------|---------------------|----------------------------------------------|---------|
| Rated cross-section | 2.5 mm ² | Rated voltage | 800 V |
| Rated current | 24 A | Current at maximum wires | 24 A |
| Standards | IEC 60947-7-1 | Volume resistance according to IEC 60947-7-x | 1.33 mΩ |
| Power loss in accordance with IEC 60947-7-x | 0.77 W | Rated impulse withstand voltage | 8 kV |
| Pollution severity | 3 | Surge voltage category | III |

UL rating data

| | | | |
|--------------------------------------------|--------|--------------------------------------------|--------|
| Certificate No. (cURus) | E60693 | Conductor size Factory wiring max. (cURus) | 12 AWG |
| Conductor size Factory wiring min. (cURus) | 28 AWG | Conductor size Field wiring max. (cURus) | 12 AWG |
| Conductor size Field wiring min. (cURus) | 28 AWG | Current size B (cURus) | 20 A |
| Current size C (cURus) | 20 A | Current size D (cURus) | 5 A |
| Voltage size B (cURus) | 600 V | Voltage size C (cURus) | 600 V |
| Voltage size D (cURus) | 600 V | | |

Classifications

| | | | |
|-------------|-------------|------------|-------------|
| ETIM 6.0 | EC000897 | ETIM 7.0 | EC000897 |
| eClass 9.0 | 27-14-11-20 | eClass 9.1 | 27-14-11-20 |
| eClass 10.0 | 27-14-11-20 | | |

Data sheet

**A-series
A2T 2.5 OR**

Weidmüller Interface GmbH & Co. KG
 Klingenbergstraße 26
 D-32758 Detmold
 Germany
 Fon: +49 5231 14-0
 Fax: +49 5231 14-292083
 www.weidmueller.com

Technical data

Approvals

Approvals



ROHS Conform

Downloads

| | |
|---------------------------------------------|---------------------------------------------------------------------------------------------------------------------------------------------------------------------------------------------------------------------------------------------------|
| Approval/Certificate/Document of Conformity | Attestation of Conformity ATEX Certificate IECEx Certificate CB Test Certificate CB Certificate DE_PT0101_20160614_032_ISSUE01.pdf |
| Engineering Data | EPLAN, WSCAD, Zuken E3.S |
| Engineering Data | STEP |
| Tender specification | Klippon® Connect 1547630000 DE Klippon® Connect 1547630000 EN |
| User Documentation | NTI_A2T_2.5.pdf StorageConditionsTerminalBlocks Aderendhülsen für die Klippon® Connect A-Reihe |

Safety note

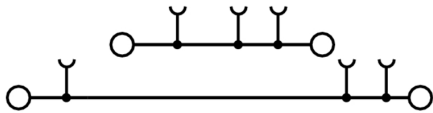
Safety notice [Safety Information](#)

Data sheet

**A-series
A2T 2.5 OR**

Weidmüller Interface GmbH & Co. KG
Klingenbergstraße 26
D-32758 Detmold
Germany
Fon: +49 5231 14-0
Fax: +49 5231 14-292083
www.weidmueller.com

Drawings



Data sheet

**A-series
A2T 2.5 OR**

Weidmüller Interface GmbH & Co. KG
 Klingenbergstraße 26
 D-32758 Detmold
 Germany
 Fon: +49 5231 14-0
 Fax: +49 5231 14-292083
 www.weidmueller.com

Accessories

Test adapter



Spring connection with PUSH IN Technology

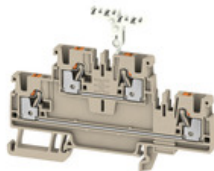
The innovative PUSH IN technology reduces the amount of time you spend on wiring to a minimum. Direct insertion guarantees high conductor pull-out forces and simple handling for all conductor types.

General ordering data

Type ATPG 1.5-10 L
 Order No. [1991890000](#)
 GTIN (EAN) 4050118376647
 Qty. 50 pc(s).

Type ATPG 2.5 MI-R
 Order No. [1991960000](#)
 GTIN (EAN) 4050118376685
 Qty. 50 pc(s).

SnapMark



SnapMark - this tag carrier has been developed specifically for the I-series double-level terminal IDK 1.5N. The flexible pivot mechanism allows cross-connections to be easily installed or removed. It can hold four DEK 5 labelling tags or two WS 10/5 Middle connector markers.

General ordering data

| | | |
|------------|----------------------------|------------------------------------------------------------------|
| Type | SNAPMARK I | Version |
| Order No. | 1805880000 | Group markers, Terminal marker, 23 x 5 mm, Pitch in mm (P): 5.00 |
| GTIN (EAN) | 4032248273614 | Weidmueller, white |
| Qty. | 50 pc(s). | |

**A-series
A2T 2.5 OR**

Weidmüller Interface GmbH & Co. KG
 Klingenbergstraße 26
 D-32758 Detmold
 Germany
 Fon: +49 5231 14-0
 Fax: +49 5231 14-292083
 www.weidmueller.com

Accessories
Blank


The Dekafix (DEK) marker is the universal marker for all conductor and plug-in connectors as well as for electronic sub-assemblies. The system is ideal for short number sequences and covers a wide range of ready-printed markers.

Strips for fast installation in only one work step. The printing is easy to read, rich in contrast and available in various widths.

- Large range of ready-to-use markers
- Strips for fast installation
- Terminal markers, suitable for all Weidmüller cable connectors
- Available as blank MultiCard or with standard printing

For custom printing: Please send us a file of our labeling software M-Print PRO or M-Print PRO Online (without installation) for your labeling specifications.

General ordering data

| | | |
|------------|----------------------------|-----------------------------------------------------------|
| Type | DEK 5/5 MC NE BR | Version |
| Order No. | 1249870000 | Dekafix, Terminal marker, 5 x 5 mm, Pitch in mm (P): 5.00 |
| GTIN (EAN) | 4050118051865 | Weidmueller, brown |
| Qty. | 1,000 pc(s). | |
| Type | DEK 5/5 MC NE GE | Version |
| Order No. | 1609801687 | Dekafix, Terminal marker, 5 x 5 mm, Pitch in mm (P): 5.00 |
| GTIN (EAN) | 4008190397135 | Weidmueller, yellow |
| Qty. | 1,000 pc(s). | |
| Type | DEK 5/5 S MC NE WS | Version |
| Order No. | 1341620000 | Dekafix, Terminal marker, 5 x 5 mm, Pitch in mm (P): 5.00 |
| GTIN (EAN) | 4050118145793 | Weidmueller, white |
| Qty. | 400 pc(s). | |
| Type | DEK 5/5 MC NE GR | Version |
| Order No. | 1609801691 | Dekafix, Terminal marker, 5 x 5 mm, Pitch in mm (P): 5.00 |
| GTIN (EAN) | 4008190397159 | Weidmueller, grey |
| Qty. | 1,000 pc(s). | |
| Type | DEK 5/5 MC NE VI | Version |
| Order No. | 1249860000 | Dekafix, Terminal marker, 5 x 5 mm, Pitch in mm (P): 5.00 |
| GTIN (EAN) | 4050118042764 | Weidmueller, violet |
| Qty. | 1,000 pc(s). | |
| Type | DEK 5/5 MC NE OR | Version |
| Order No. | 1238340000 | Dekafix, Terminal marker, 5 x 5 mm, Pitch in mm (P): 5.00 |
| GTIN (EAN) | 4050118062632 | Weidmueller, orange |
| Qty. | 1,000 pc(s). | |
| Type | DEK 5/5 MC NE RT | Version |
| Order No. | 1609801686 | Dekafix, Terminal marker, 5 x 5 mm, Pitch in mm (P): 5.00 |
| GTIN (EAN) | 4008190397128 | Weidmueller, red |
| Qty. | 1,000 pc(s). | |
| Type | DEK 5/5 MC NE WS | Version |
| Order No. | 1609801044 | Dekafix, Terminal marker, 5 x 5 mm, Pitch in mm (P): 5.00 |
| GTIN (EAN) | 4008190397111 | Weidmueller, white |
| Qty. | 1,000 pc(s). | |

Creation date May 4, 2020 12:59:30 AM CEST

A-series A2T 2.5 OR

Weidmüller Interface GmbH & Co. KG
 Klingenbergstraße 26
 D-32758 Detmold
 Germany
 Fon: +49 5231 14-0
 Fax: +49 5231 14-292083
 www.weidmueller.com

Accessories

| | | |
|------------|----------------------------|-----------------------------------------------------------|
| Type | DEK 5/5 MC NE GN | Version |
| Order No. | 1609801688 | Dekafix, Terminal marker, 5 x 5 mm, Pitch in mm (P): 5.00 |
| GTIN (EAN) | 4008190397142 | Weidmueller, green |
| Qty. | 1,000 pc(s). | |
| Type | DEK 5/5 MC NE SW | Version |
| Order No. | 1457550000 | Dekafix, Terminal marker, 5 x 5 mm, Pitch in mm (P): 5.00 |
| GTIN (EAN) | 4050118263817 | Weidmueller, black |
| Qty. | 1,000 pc(s). | |
| Type | DEK 5/5 MC NE BL | Version |
| Order No. | 1609801693 | Dekafix, Terminal marker, 5 x 5 mm, Pitch in mm (P): 5.00 |
| GTIN (EAN) | 4008190397166 | Weidmueller, blue |
| Qty. | 1,000 pc(s). | |

Plus



The Dekafix (DEK) marker is the universal marker for all conductor and plug-in connectors as well as for electronic sub-assemblies. The system is ideal for short number sequences and covers a wide range of ready-printed markers.

Strips for fast installation in only one work step. The printing is easy to read, rich in contrast and available in various widths.

- Large range of ready-to-use markers
- Strips for fast installation
- Terminal markers, suitable for all Weidmüller cable connectors
- Available as blank MultiCard or with standard printing

For custom printing: Please send us a file of our labeling software M-Print PRO or M-Print PRO Online (without installation) for your labeling specifications.

General ordering data

| | | |
|------------|----------------------------|-----------------------------------------------------------|
| Type | DEK 5/5 PLUS MC NE GE | Version |
| Order No. | 1907520000 | Dekafix, Terminal marker, 5 x 5 mm, Pitch in mm (P): 5.00 |
| GTIN (EAN) | 4032248532100 | Weidmueller, yellow |
| Qty. | 1,000 pc(s). | |
| Type | DEK 5/5 PLUS MC NE WS | Version |
| Order No. | 1854490000 | Dekafix, Terminal marker, 5 x 5 mm, Pitch in mm (P): 5.00 |
| GTIN (EAN) | 4032248393596 | Weidmueller, white |
| Qty. | 1,000 pc(s). | |

**A-series
A2T 2.5 OR**

Weidmüller Interface GmbH & Co. KG
 Klingenbergstraße 26
 D-32758 Detmold
 Germany
 Fon: +49 5231 14-0
 Fax: +49 5231 14-292083
 www.weidmueller.com

Accessories

Covers



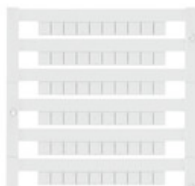
Spring connection with PUSH IN Technology

The innovative PUSH IN technology reduces the amount of time you spend on wiring to a minimum. Direct insertion guarantees high conductor pull-out forces and simple handling for all conductor types.

General ordering data

| | | |
|------------|----------------------------|-------------------------------------|
| Type | AAM 2.5 YE FLASH | Version |
| Order No. | 2635550000 | Terminal marker, 8 x 5.1 mm, yellow |
| GTIN (EAN) | 4050118674095 | |
| Qty. | 40 pc(s). | |

V0



The Dekafix (DEK) marker is the universal marker for all conductor and plug-in connectors as well as for electronic sub-assemblies. The system is ideal for short number sequences and covers a wide range of ready-printed markers.

Strips for fast installation in only one work step. The printing is easy to read, rich in contrast and available in various widths.

- Large range of ready-to-use markers
- Strips for fast installation
- Terminal markers, suitable for all Weidmüller cable connectors
- Available as blank MultiCard or with standard printing

For custom printing: Please send us a file of our labeling software M-Print PRO or M-Print PRO Online (without installation) for your labeling specifications.

General ordering data

| | | |
|------------|----------------------------|-----------------------------------------------------------|
| Type | DEK 5/5 MC NE V0 WS | Version |
| Order No. | 1388530000 | Dekafix, Terminal marker, 5 x 5 mm, Pitch in mm (P): 5.00 |
| GTIN (EAN) | 4050118188622 | Weidmueller, white |
| Qty. | 1,000 pc(s). | |

A-series A2T 2.5 OR

Weidmüller Interface GmbH & Co. KG
 Klingenbergstraße 26
 D-32758 Detmold
 Germany
 Fon: +49 5231 14-0
 Fax: +49 5231 14-292083
 www.weidmueller.com

Accessories

Custom printing



WS markers are the perfect match for the W-series connectors. Thanks to their system compatibility, the WS tags can also be used with the I-series and the Z-series. The large marking surfaces do not only permit long character strings but also multi-line text. WS markers are ideal for labels with long, customised character strings. Thanks to the proven MultiCard format, printing with laser printer, PrintJet ADVANCED, plotter or MC-Mobilo is possible.

- Can be fitted in strips or individually
- Markers in proven MultiCard format

For custom printing: Please send us a file of our labeling software M-Print PRO or M-Print PRO Online (without installation) for your labeling specifications.

General ordering data

| | | |
|------------|----------------------------|--------------------------------------------------------------------|
| Type | WS 10/5 M PLUS MC SDR | Version |
| Order No. | 2007770000 | WS, Terminal marker, 10 x 5 mm, Pitch in mm (P): 5.00 Weidmueller, |
| GTIN (EAN) | 4050118393279 | Allen-Bradley, To customer specification |
| Qty. | 120 pc(s). | |
| Type | WS 10/5 PLUS MC SDR | Version |
| Order No. | 1046320000 | WS, Terminal marker, 10 x 5 mm, Pitch in mm (P): 5.00 Weidmueller, |
| GTIN (EAN) | 4032248782024 | Allen-Bradley, To customer specification |
| Qty. | 120 pc(s). | |
| Type | WS 10/5 MC M SDR | Version |
| Order No. | 1792010000 | WS, Terminal marker, 10 x 5 mm, Pitch in mm (P): 5.00 Weidmueller, |
| GTIN (EAN) | 4032248223879 | Allen-Bradley, To customer specification |
| Qty. | 144 pc(s). | |
| Type | WS 10/5 MC SDR | Version |
| Order No. | 1635010000 | WS, Terminal marker, 10 x 5 mm, Pitch in mm (P): 5.00 Weidmueller, |
| GTIN (EAN) | 4008190456634 | Allen-Bradley, To customer specification |
| Qty. | 144 pc(s). | |

End brackets



Spring connection with PUSH IN Technology

The innovative PUSH IN technology reduces the amount of time you spend on wiring to a minimum. Direct insertion guarantees high conductor pull-out forces and simple handling for all conductor types.

General ordering data

| | | |
|------------|----------------------------|-----------------------|
| Type | AEB 35 SCL/1 V0 BK | Version |
| Order No. | 2661300000 | A-series, End bracket |
| GTIN (EAN) | 4050118702187 | |
| Qty. | 20 pc(s). | |

Creation date May 4, 2020 12:59:30 AM CEST

Data sheet

A-series A2T 2.5 OR

Weidmüller Interface GmbH & Co. KG
 Klingenbergstraße 26
 D-32758 Detmold
 Germany
 Fon: +49 5231 14-0
 Fax: +49 5231 14-292083
 www.weidmueller.com

Accessories

| | | |
|------------|----------------------------|-----------------------|
| Type | AEB 35 SCL/1 V0 | Version |
| Order No. | 2661280000 | A-series, End bracket |
| GTIN (EAN) | 4050118702163 | |
| Qty. | 20 pc(s). | |
| Type | AEB 35 SCL/1 V0 GY | Version |
| Order No. | 2661290000 | A-series, End bracket |
| GTIN (EAN) | 4050118702170 | |
| Qty. | 20 pc(s). | |
| Type | AEB 35 SC/1 | Version |
| Order No. | 1991920000 | A-series, End bracket |
| GTIN (EAN) | 4050118376722 | |
| Qty. | 50 pc(s). | |
| Type | AEB 35 SC/1 BK | Version |
| Order No. | 2475310000 | A-series, End bracket |
| GTIN (EAN) | 4050118487114 | |
| Qty. | 50 pc(s). | |

ZQV 2.5N



Spring connection with PUSH IN Technology

The innovative PUSH IN technology reduces the amount of time you spend on wiring to a minimum. Direct insertion guarantees high conductor pull-out forces and simple handling for all conductor types.

General ordering data

| | |
|------------|----------------------------|
| Type | ZQV 2.5N/8 BL |
| Order No. | 1527840000 |
| GTIN (EAN) | 4050118448597 |
| Qty. | 20 pc(s). |
| Type | ZQV 2.5N/6 RD |
| Order No. | 2108720000 |
| GTIN (EAN) | 4050118448504 |
| Qty. | 20 pc(s). |
| Type | ZQV 2.5N/8 |
| Order No. | 1527670000 |
| GTIN (EAN) | 4050118448405 |
| Qty. | 20 pc(s). |
| Type | ZQV 2.5N/2 |
| Order No. | 1527540000 |
| GTIN (EAN) | 4050118448467 |
| Qty. | 60 pc(s). |
| Type | ZQV 2.5N/10 BL |
| Order No. | 1527880000 |
| GTIN (EAN) | 4050118448573 |
| Qty. | 20 pc(s). |

Creation date May 4, 2020 12:59:30 AM CEST

A-series
A2T 2.5 OR

Weidmüller Interface GmbH & Co. KG
 Klingenbergstraße 26
 D-32758 Detmold
 Germany
 Fon: +49 5231 14-0
 Fax: +49 5231 14-292083
 www.weidmueller.com

Accessories

Type ZQV 2.5N/7
 Order No. [1527640000](#)
 GTIN (EAN) 4050118448412
 Qty. 20 pc(s).

Type ZQV 2.5N/50
 Order No. [1527730000](#)
 GTIN (EAN) 4050118411362
 Qty. 5 pc(s).

Type ZQV 2.5N/20 BL
 Order No. [1527890000](#)
 GTIN (EAN) 4050118448566
 Qty. 20 pc(s).

Type ZQV 2.5N/4 RD
 Order No. [2108700000](#)
 GTIN (EAN) 4050118448528
 Qty. 60 pc(s).

Type ZQV 2.5N/9
 Order No. [1527680000](#)
 GTIN (EAN) 4050118447996
 Qty. 20 pc(s).

Type ZQV 2.5N/10
 Order No. [1527690000](#)
 GTIN (EAN) 4050118447989
 Qty. 20 pc(s).

Type ZQV 2.5N/3
 Order No. [1527570000](#)
 GTIN (EAN) 4050118448450
 Qty. 60 pc(s).

Type ZQV 2.5N/10 RD
 Order No. [2108910000](#)
 GTIN (EAN) 4050118486018
 Qty. 20 pc(s).

Type ZQV 2.5N/4
 Order No. [1527590000](#)
 GTIN (EAN) 4050118448443
 Qty. 60 pc(s).

Type ZQV 2.5N/5
 Order No. [1527620000](#)
 GTIN (EAN) 4050118448436
 Qty. 20 pc(s).

Type ZQV 2.5N/5 RD
 Order No. [2108710000](#)
 GTIN (EAN) 4050118448511
 Qty. 20 pc(s).

Type ZQV 2.5N/2 BL
 Order No. [1527740000](#)
 GTIN (EAN) 4050118448658
 Qty. 60 pc(s).

Type ZQV 2.5N/3 BL
 Order No. [1527770000](#)
 GTIN (EAN) 4050118448641
 Qty. 60 pc(s).

A-series A2T 2.5 OR

Weidmüller Interface GmbH & Co. KG
Klingenbergstraße 26
D-32758 Detmold
Germany
Fon: +49 5231 14-0
Fax: +49 5231 14-292083
www.weidmueller.com

Accessories

Type ZQV 2.5N/3 RD
Order No. [2108690000](#)
GTIN (EAN) 4050118448535
Qty. 60 pc(s).

Type ZQV 2.5N/20
Order No. [1527720000](#)
GTIN (EAN) 4050118447972
Qty. 20 pc(s).

Type ZQV 2.5N/7 RD
Order No. [2108810000](#)
GTIN (EAN) 4050118448498
Qty. 20 pc(s).

Type ZQV 2.5N/9 BL
Order No. [1527870000](#)
GTIN (EAN) 4050118448580
Qty. 20 pc(s).

Type ZQV 2.5N/4 BL
Order No. [1527780000](#)
GTIN (EAN) 4050118448634
Qty. 60 pc(s).

Type ZQV 2.5N/6 BL
Order No. [1527820000](#)
GTIN (EAN) 4050118448610
Qty. 20 pc(s).

Type ZQV 2.5N/7 BL
Order No. [1527830000](#)
GTIN (EAN) 4050118448603
Qty. 20 pc(s).

Type ZQV 2.5N/20 RD
Order No. [2108920000](#)
GTIN (EAN) 4050118485899
Qty. 20 pc(s).

Type ZQV 2.5N/50 BL
Order No. [1527920000](#)
GTIN (EAN) 4050118448559
Qty. 5 pc(s).

Type ZQV 2.5N/2 RD
Order No. [2108470000](#)
GTIN (EAN) 4050118448542
Qty. 60 pc(s).

Type ZQV 2.5N/50 RD
Order No. [2109000000](#)
GTIN (EAN) 4050118486001
Qty. 5 pc(s).

Type ZQV 2.5N/6
Order No. [1527630000](#)
GTIN (EAN) 4050118448429
Qty. 20 pc(s).

Type ZQV 2.5N/9 RD
Order No. [2108900000](#)
GTIN (EAN) 4050118448474
Qty. 20 pc(s).

Creation date May 4, 2020 12:59:30 AM CEST

**A-series
A2T 2.5 OR**

Weidmüller Interface GmbH & Co. KG
 Klingenbergstraße 26
 D-32758 Detmold
 Germany
 Fon: +49 5231 14-0
 Fax: +49 5231 14-292083
 www.weidmueller.com

Accessories

Type ZQV 2.5N/5 BL
 Order No. [1527790000](#)
 GTIN (EAN) 4050118448627
 Qty. 20 pc(s).

Type ZQV 2.5N/8 RD
 Order No. [2108870000](#)
 GTIN (EAN) 4050118448481
 Qty. 20 pc(s).

Digital multimeters

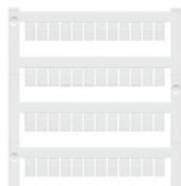


Multimeters are capable of measuring a number of variables. Each instrument can measure voltage and resistance, as well as performing continuity and diode testing as standard. In addition, the individual multimeters also feature extra measuring options such as current, frequency, capacitance and temperature. Digital multimeters have the advantage of a clear display which can be read easily and directly. With these instruments, mistakes arising from faulty conversion of the measuring ranges or misreading the display are a thing of the past.

General ordering data

| | | |
|------------|----------------------------|------------|
| Type | ZUB MULTIMETER | Version |
| Order No. | 9205270000 | Multimeter |
| GTIN (EAN) | 4032248723522 | |
| Qty. | 1 pc(s). | |

Blank



WS markers are the perfect match for the W-series connectors. Thanks to their system compatibility, the WS tags can also be used with the I-series and the Z-series. The large marking surfaces do not only permit long character strings but also multi-line text. WS markers are ideal for labels with long, customised character strings. Thanks to the proven MultiCard format, printing with laser printer, PrintJet ADVANCED, plotter or MC-Mobilo is possible.

- Can be fitted in strips or individually
- Markers in proven MultiCard format

For custom printing: Please send us a file of our labeling software M-Print PRO or M-Print PRO Online (without installation) for your labeling specifications.

General ordering data

| | | |
|------------|----------------------------|-------------------------------------------------------------------|
| Type | WS 8/5 MC NE RT | Version |
| Order No. | 1773521686 | WS, Terminal marker, 8 x 5 mm, Pitch in mm (P): 5.00 Weidmueller, |
| GTIN (EAN) | 4032248141531 | Allen-Bradley, red |
| Qty. | 720 pc(s). | |

A-series A2T 2.5 OR

Weidmüller Interface GmbH & Co. KG
 Klingenbergstraße 26
 D-32758 Detmold
 Germany
 Fon: +49 5231 14-0
 Fax: +49 5231 14-292083
 www.weidmueller.com

Accessories

| | | |
|------------|----------------------------|-------------------------------------------------------------------|
| Type | WS 8/5 MC NE OR | Version |
| Order No. | 1773521690 | WS, Terminal marker, 8 x 5 mm, Pitch in mm (P): 5.00 Weidmueller, |
| GTIN (EAN) | 4032248143092 | Allen-Bradley, orange |
| Qty. | 720 pc(s). | |
| Type | WS 8/5 MC NE WS | Version |
| Order No. | 1640740000 | WS, Terminal marker, 8 x 5 mm, Pitch in mm (P): 5.00 Weidmueller, |
| GTIN (EAN) | 4008190279103 | Allen-Bradley, white |
| Qty. | 720 pc(s). | |
| Type | WS 8/5 MC NE BL | Version |
| Order No. | 1773521693 | WS, Terminal marker, 8 x 5 mm, Pitch in mm (P): 5.00 Weidmueller, |
| GTIN (EAN) | 4032248141715 | Allen-Bradley, blue |
| Qty. | 720 pc(s). | |
| Type | WS 8/5 MC NE GE | Version |
| Order No. | 1773521687 | WS, Terminal marker, 8 x 5 mm, Pitch in mm (P): 5.00 Weidmueller, |
| GTIN (EAN) | 4032248141548 | Allen-Bradley, yellow |
| Qty. | 720 pc(s). | |
| Type | WS 8/5 PLUS MC NE WS | Version |
| Order No. | 1951870000 | WS, Terminal marker, 8 x 5 mm, Pitch in mm (P): 5.00 Weidmueller, |
| GTIN (EAN) | 4032248631605 | Allen-Bradley, white |
| Qty. | 600 pc(s). | |

End plates



Spring connection with PUSH IN Technology

The innovative PUSH IN technology reduces the amount of time you spend on wiring to a minimum. Direct insertion guarantees high conductor pull-out forces and simple handling for all conductor types.

General ordering data

| | | |
|------------|----------------------------|---------------------|
| Type | AEP 2T 2.5 | Version |
| Order No. | 1547690000 | A-series, End plate |
| GTIN (EAN) | 4050118441048 | |
| Qty. | 20 pc(s). | |
| Type | AEP 2T 2.5 BL | Version |
| Order No. | 1547700000 | A-series, End plate |
| GTIN (EAN) | 4050118441055 | |
| Qty. | 20 pc(s). | |

**A-series
A2T 2.5 OR**

Weidmüller Interface GmbH & Co. KG
 Klingenbergstraße 26
 D-32758 Detmold
 Germany
 Fon: +49 5231 14-0
 Fax: +49 5231 14-292083
 www.weidmueller.com

Accessories

Custom printing



The Dekafix (DEK) marker is the universal marker for all conductor and plug-in connectors as well as for electronic sub-assemblies. The system is ideal for short number sequences and covers a wide range of ready-printed markers.

Strips for fast installation in only one work step. The printing is easy to read, rich in contrast and available in various widths.

- Large range of ready-to-use markers
- Strips for fast installation
- Terminal markers, suitable for all Weidmüller cable connectors
- Available as blank MultiCard or with standard printing

For custom printing: Please send us a file of our labeling software M-Print PRO or M-Print PRO Online (without installation) for your labeling specifications.

General ordering data

| | | |
|------------|----------------------------|-----------------------------------------------------------|
| Type | DEK 5/5 S MC SDR | Version |
| Order No. | 1341590000 | Dekafix, Terminal marker, 5 x 5 mm, Pitch in mm (P): 5.00 |
| GTIN (EAN) | 4050118146042 | Weidmueller, To customer specification |
| Qty. | 80 pc(s). | |
| Type | DEK 5/5 MC SDR | Version |
| Order No. | 1609810000 | Dekafix, Terminal marker, 5 x 5 mm, Pitch in mm (P): 5.00 |
| GTIN (EAN) | 4008190456597 | Weidmueller, To customer specification |
| Qty. | 200 pc(s). | |
| Type | DEK 5/5 PLUS MC SDR | Version |
| Order No. | 1854500000 | Dekafix, Terminal marker, 5 x 5 mm, Pitch in mm (P): 5.00 |
| GTIN (EAN) | 4032248393602 | Weidmueller, To customer specification |
| Qty. | 200 pc(s). | |

**A-series
A2T 2.5 OR**

Weidmüller Interface GmbH & Co. KG
 Klingenbergstraße 26
 D-32758 Detmold
 Germany
 Fon: +49 5231 14-0
 Fax: +49 5231 14-292083
 www.weidmueller.com

Accessories

DEK 5/5



WS/ DEK

MultiMark DEK/WS connector markers use an innovative composite material made from two components. The hard base contour of the marker snaps securely into the connector. The elastic surface finish makes the marker easy to mount. This specially punched material enables the strips to be stretched to accommodate the slight variations in spacing that tend to add up, especially with long terminal blocks. Another advantage: the excellent printability of the surface material guarantees durable and wear-resistant labelling. A print resolution of 300 dpi also produces a very legible script.

Your benefits with MultiMark

- Firm hold and durable printing
- Continuous strips save installation time
- Easy mounting thanks to an innovative composite material
- Large label field for optimal legibility
- High flexibility thanks to manufacturer independence

General ordering data

| | | | |
|------------|----------------------------|---------|--------------------------------------------------------|
| Type | DEK 5/5 MM WS | Version | |
| Order No. | 2007110000 | | Dekafix, Terminal marker, 5 x 5 mm, Weidmueller, white |
| GTIN (EAN) | 4050118391862 | | |
| Qty. | 800 pc(s). | | |

A-series A2T 2.5 OR

Weidmüller Interface GmbH & Co. KG
 Klingenbergstraße 26
 D-32758 Detmold
 Germany
 Fon: +49 5231 14-0
 Fax: +49 5231 14-292083
 www.weidmueller.com

Accessories

WS 8/5



WS/ DEK

MultiMark DEK/WS connector markers use an innovative composite material made from two components. The hard base contour of the marker snaps securely into the connector. The elastic surface finish makes the marker easy to mount. This specially punched material enables the strips to be stretched to accommodate the slight variations in spacing that tend to add up, especially with long terminal blocks. Another advantage: the excellent printability of the surface material guarantees durable and wear-resistant labelling. A print resolution of 300 dpi also produces a very legible script.

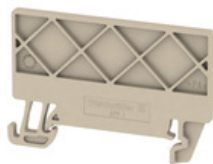
Your benefits with MultiMark

- Firm hold and durable printing
- Continuous strips save installation time
- Easy mounting thanks to an innovative composite material
- Large label field for optimal legibility
- High flexibility thanks to manufacturer independence

General ordering data

| | | |
|------------|----------------------------|---------------------------------------------------|
| Type | WS 8/5 MM WS | Version |
| Order No. | 2007150000 | WS, Terminal marker, 8 x 5 mm, Weidmueller, white |
| GTIN (EAN) | 4050118392029 | |
| Qty. | 800 pc(s). | |

Partition plates



Spring connection with PUSH IN Technology

The innovative PUSH IN technology reduces the amount of time you spend on wiring to a minimum. Direct insertion guarantees high conductor pull-out forces and simple handling for all conductor types.

General ordering data

| | | |
|------------|----------------------------|----------------------------|
| Type | APP 4 | Version |
| Order No. | 2489110000 | A-series, Separation plate |
| GTIN (EAN) | 4050118499322 | |
| Qty. | 50 pc(s). | |

A-series A2T 2.5 OR

Weidmüller Interface GmbH & Co. KG
 Klingenbergstraße 26
 D-32758 Detmold
 Germany
 Fon: +49 5231 14-0
 Fax: +49 5231 14-292083
 www.weidmueller.com

Accessories

Blank



WS markers are the perfect match for the W-series connectors. Thanks to their system compatibility, the WS tags can also be used with the I-series and the Z-series. The large marking surfaces do not only permit long character strings but also multi-line text. WS markers are ideal for labels with long, customised character strings. Thanks to the proven MultiCard format, printing with laser printer, PrintJet ADVANCED, plotter or MC-Mobilo is possible.

- Can be fitted in strips or individually
- Markers in proven MultiCard format

For custom printing: Please send us a file of our labeling software M-Print PRO or M-Print PRO Online (without installation) for your labeling specifications.

General ordering data

| | | |
|------------|----------------------------|--------------------------------------------------------------------|
| Type | WS 10/5 MC NE BL | Version |
| Order No. | 1773531693 | WS, Terminal marker, 10 x 5 mm, Pitch in mm (P): 5.00 Weidmueller, |
| GTIN (EAN) | 4032248141814 | Allen-Bradley, blue |
| Qty. | 720 pc(s). | |
| Type | WS 10/5 MC NE RT | Version |
| Order No. | 1773531686 | WS, Terminal marker, 10 x 5 mm, Pitch in mm (P): 5.00 Weidmueller, |
| GTIN (EAN) | 4032248141746 | Allen-Bradley, red |
| Qty. | 720 pc(s). | |
| Type | WS 10/5 M MC NE WS | Version |
| Order No. | 1792000000 | WS, Terminal marker, 10 x 5 mm, Pitch in mm (P): 5.00 Weidmueller, |
| GTIN (EAN) | 4032248223862 | Allen-Bradley, white |
| Qty. | 720 pc(s). | |
| Type | WS 10/5 M PLUS MC NE WS | Version |
| Order No. | 2003770000 | WS, Terminal marker, 10 x 5 mm, Pitch in mm (P): 5.00 Weidmueller, |
| GTIN (EAN) | 4050118424447 | Allen-Bradley, white |
| Qty. | 600 pc(s). | |
| Type | WS 10/5 MC NE GE | Version |
| Order No. | 1773531687 | WS, Terminal marker, 10 x 5 mm, Pitch in mm (P): 5.00 Weidmueller, |
| GTIN (EAN) | 4032248141753 | Allen-Bradley, yellow |
| Qty. | 720 pc(s). | |
| Type | WS 10/5 PLUS MC NE WS | Version |
| Order No. | 1046380000 | WS, Terminal marker, 10 x 5 mm, Pitch in mm (P): 5.00 Weidmueller, |
| GTIN (EAN) | 4032248782086 | Allen-Bradley, white |
| Qty. | 600 pc(s). | |
| Type | WS 10/5 MC NE WS | Version |
| Order No. | 1635000000 | WS, Terminal marker, 10 x 5 mm, Pitch in mm (P): 5.00 Weidmueller, |
| GTIN (EAN) | 4008190261948 | Allen-Bradley, white |
| Qty. | 720 pc(s). | |

**A-series
A2T 2.5 OR**

Weidmüller Interface GmbH & Co. KG
 Klingenbergstraße 26
 D-32758 Detmold
 Germany
 Fon: +49 5231 14-0
 Fax: +49 5231 14-292083
 www.weidmueller.com

Accessories

Custom printing



WS markers are the perfect match for the W-series connectors. Thanks to their system compatibility, the WS tags can also be used with the I-series and the Z-series. The large marking surfaces do not only permit long character strings but also multi-line text. WS markers are ideal for labels with long, customised character strings. Thanks to the proven MultiCard format, printing with laser printer, PrintJet ADVANCED, plotter or MC-Mobilo is possible.

- Can be fitted in strips or individually
- Markers in proven MultiCard format

For custom printing: Please send us a file of our labeling software M-Print PRO or M-Print PRO Online (without installation) for your labeling specifications.

General ordering data

| | | |
|------------|----------------------------|-------------------------------------------------------------------|
| Type | WS 8/5 MC SDR | Version |
| Order No. | 1640750000 | WS, Terminal marker, 8 x 5 mm, Pitch in mm (P): 5.00 Weidmueller, |
| GTIN (EAN) | 4008190456627 | Allen-Bradley, To customer specification |
| Qty. | 144 pc(s). | |
| Type | WS 8/5 PLUS MC SDR | Version |
| Order No. | 1038790000 | WS, Terminal marker, 8 x 5 mm, Pitch in mm (P): 5.00 Weidmueller, |
| GTIN (EAN) | 4032248768066 | Allen-Bradley, To customer specification |
| Qty. | 120 pc(s). | |