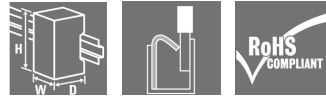


## ACT20P ACT20P-CMT-60-AO-RC-P

**Weidmüller Interface GmbH & Co. KG**  
 Klingenbergstraße 26  
 D-32758 Detmold  
 Germany  
 Fon: +49 5231 14-0  
 Fax: +49 5231 14-292083  
 www.weidmueller.com

### Similar to illustration



### ACT20P: The flexible solution

- Precise and highly functional signal converters
- Release levers simplify handling

### General ordering data

Type	ACT20P-CMT-60-AO-RC-P
Order No.	<a href="#">1510290000</a>
Version	Current-measuring transducer, Limit value monitoring, Signal converter/isolator, Current monitoring, Analogue output, PUSH IN connection, Input measurement range: configurable, 0...40/50/60 A AC or DC
GTIN (EAN)	4050118319552
Qty.	1 pc(s).

Creation date May 4, 2020 2:29:02 AM CEST

**ACT20P**  
**ACT20P-CMT-60-AO-RC-P**

**Weidmüller Interface GmbH & Co. KG**  
 Klingenbergstraße 26  
 D-32758 Detmold  
 Germany  
 Fon: +49 5231 14-0  
 Fax: +49 5231 14-292083  
 www.weidmueller.com

**Technical data**
**Dimensions and weights**

Width	22.8 mm	Width (inches)	0.898 inch
Height	127.1 mm	Height (inches)	5.004 inch
Depth	114 mm	Depth (inches)	4.488 inch
Net weight	158 g		

**Temperatures**

Humidity	5...95 %, no condensation	Operating temperature, max.	60 °C
Operating temperature, min.	-25 °C	Storage temperature, max.	85 °C
Storage temperature, min.	-40 °C	Operating temperature	-25 °C...60 °C
Storage temperature	-40 °C...85 °C		

**Probability of failure**

MTTF	158 Years
------	-----------

**Environmental Product Compliance**

REACH SVHC	Lead 7439-92-1
------------	----------------

**Input**

Number of inputs	1	Input signal	Current-carrying cable in feed-through hole, Diameter 10.5 mm
Input measurement range	configurable, 0...40/50/60 A AC or DC	Input frequency	AC: 15...700 Hz (true root mean square), AC: 50 Hz (arithmetic average)

**General data**

Accuracy	< 0.75 % FSR	Configuration	DIP switch and potentiometer, for thresholds (overcurrent / undercurrent), delay and hysteresis
Galvanic isolation	4-way isolator, between input / output / supply / relay	Power consumption, max.	2.2 W
Rail	TS 35	Step response time	≤ 300 ms (RMS), ≤ 60 ms (AA)
Temperature coefficient	0.01%/K @ 0...40 A, 0.10%/K @ 40...55 A, 0.30%/K @ 55...60 A	Voltage supply	16,8 V...31,2 V

**Insulation coordination**

EMC standards	IEC 61326-1, IEC 61010-2-201	Galvanic isolation	4-way isolator, between input / output / supply / relay
Impulse withstand voltage	6.4 kV (1.2/50 μs)	Insulation voltage	4 kV <sub>eff</sub> / 1 min.
Pollution severity	2	Rated voltage	300 V AC <sub>rms</sub>
Surge voltage category	III		

**ACT20P**  
**ACT20P-CMT-60-AO-RC-P**

**Weidmüller Interface GmbH & Co. KG**  
 Klingenbergstraße 26  
 D-32758 Detmold  
 Germany  
 Fon: +49 5231 14-0  
 Fax: +49 5231 14-292083  
 www.weidmueller.com

**Technical data**
**Output (analogue)**

Load resistance current	≤ 600 Ω	Load resistance voltage	≥ 10 kΩ
Output current	Adjustable, 0...20 mA, 4...20 mA, -20...+20 mA	Output voltage	Adjustable, 0...10 V, 2...10 V, 0...5 V, 1...5 V, -5...+5 V, -10...+10 V
Type (analogue output)	Voltage and current output (configurable)		

**Output (digital)**

Alarm function	Surge current, Under-current, Alarm delay: 0...10 s, Hysteresis 5% / 10%	Number of digital outputs	1
Type	Relay, 1 CO contact, normal / inverse adjustment	Max. switching voltage, DC	24 V
Max. switching voltage, AC	250 V	Rated switching current	6 A

**Connection data**

Type of connection	PUSH IN	Wire connection cross section AWG, min.	AWG 26
Wire connection cross section AWG, max.	AWG 14	Wire cross-section, solid, min.	0.2 mm <sup>2</sup>
Wire cross-section, solid, max.	2.5 mm <sup>2</sup>	Wire connection cross-section, finely stranded, min.	0.2 mm <sup>2</sup>
Wire connection cross section, finely stranded, max.	2.5 mm <sup>2</sup>	Wire connection cross-section, finely stranded with wire-end ferrules DIN 46228/4, min.	0.2 mm <sup>2</sup>
Wire connection cross-section, finely stranded with wire-end ferrules DIN 46228/4, max.	2.5 mm <sup>2</sup>		

**Classifications**

ETIM 6.0	EC002475	ETIM 7.0	EC002475
eClass 9.0	27-21-01-23	eClass 9.1	27-21-01-23
eClass 10.0	27-21-01-23		

**Product information**

Product information	<p>The ACT20P-CMT-XX-(AO)-RC-P series of devices measure and monitor AC and DC currents of up to 60 A. The real effective value method used allows for precise measurement, even for distorted current curve shapes. The devices feature integrated limit value monitoring with an adjustable switching threshold, delay and hysteresis, as well as a relay output.</p> <p>Features</p> <ul style="list-style-type: none"> <li>• Real effective value measurement (True RMS) or arithmetic averaging (AA) measurement and contactless through-hole technology</li> <li>• Limit value monitoring for overcurrent or undercurrent</li> <li>• Relay output by means of the open-circuit / closed-circuit principle</li> <li>• Adjustable trigger delay for filtering current peaks</li> <li>• Operational status and error display on a front panel LED and output signalling according to NE43, NE44, NE107</li> <li>• Galvanic four-way insulation for secure isolation according to IEC/EN 61010-2-201</li> </ul>
---------------------	---

**Data sheet**

**ACT20P**  
**ACT20P-CMT-60-AO-RC-P**

**Weidmüller Interface GmbH & Co. KG**  
 Klingenbergstraße 26  
 D-32758 Detmold  
 Germany  
 Fon: +49 5231 14-0  
 Fax: +49 5231 14-292083  
 www.weidmueller.com

**Technical data**

**Approvals**

Approvals



Approvals	CULUS;
ROHS	Conform

**Downloads**

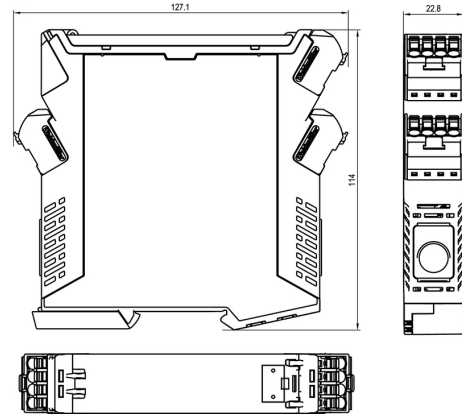
Approval/Certificate/Document of Conformity	<a href="#">DNV GL certification</a> <a href="#">Declaration of Conformity</a>
Engineering Data	<a href="#">STEP</a>
Software	<a href="#">DIP switch configuration tool</a>
User Documentation	<a href="#">Instruction sheet</a>

**ACT20P**  
**ACT20P-CMT-60-AO-RC-P**

**Weidmüller Interface GmbH & Co. KG**  
Klingenbergstraße 26  
D-32758 Detmold  
Germany  
Fon: +49 5231 14-0  
Fax: +49 5231 14-292083  
www.weidmueller.com

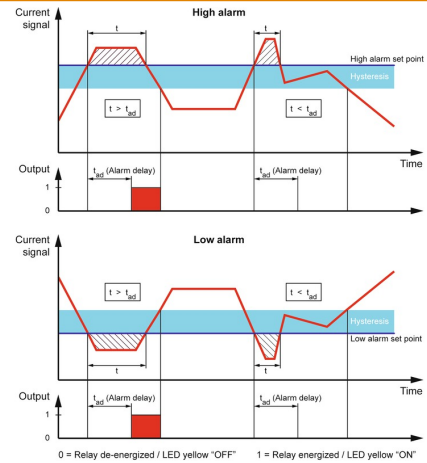
**Drawings**

**Dimensioned drawing**

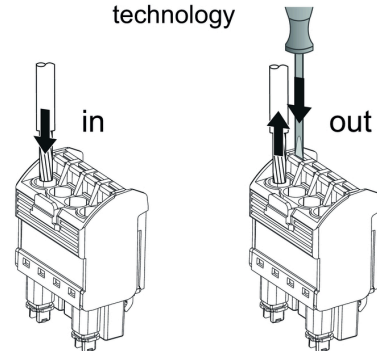


**Configuration**

DIP switch S1		DIP switch S2	
<b>Current input range</b>	1 2 3 4 5 6 7 8	<b>Output range</b>	1 2 3 4 5 6 7 8
0...40 A	<input type="checkbox"/>	0...10 V	<input type="checkbox"/>
0...50 A	<input type="checkbox"/>	2...10 V	<input type="checkbox"/>
0...60 A	<input type="checkbox"/>	0...5 V	<input type="checkbox"/>
		1...5 V	<input type="checkbox"/>
<b>Measuring method</b>	1 2 3 4 5 6 7 8	-5...+5 V	<input type="checkbox"/>
True RMS	<input type="checkbox"/>	-10...+10 V	<input type="checkbox"/>
Arithmetic average	<input type="checkbox"/>	0...20 mA	<input type="checkbox"/>
		-20...+20 mA	<input type="checkbox"/>
<b>Alarm delay time</b>	1 2 3 4 5 6 7 8	<b>Alarm relay action</b>	1 2 3 4 5 6 7 8
0 s	<input type="checkbox"/>	Energized	<input type="checkbox"/>
2 s	<input type="checkbox"/>	De-energized	<input type="checkbox"/>
5 s	<input type="checkbox"/>		
10 s	<input type="checkbox"/>	<b>Alarm hysteresis</b>	1 2 3 4 5 6 7 8
		5 %	<input type="checkbox"/>
<b>Measuring range monitoring</b>	1 2 3 4 5 6 7 8	10 %	<input type="checkbox"/>
Yes	<input type="checkbox"/>	<b>Alarm type</b>	1 2 3 4 5 6 7 8
No	<input type="checkbox"/>	High alarm	<input type="checkbox"/>
		Low alarm	<input type="checkbox"/>
<b>Output error action</b>	1 2 3 4 5 6 7 8		
Upscale	<input type="checkbox"/>		
Downscale	<input type="checkbox"/>		
<b>Transfer function</b>	1 2 3 4 5 6 7 8		
Normal	<input type="checkbox"/>		
Inverse	<input type="checkbox"/>		

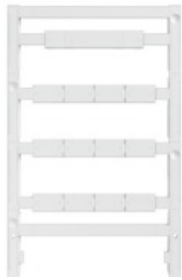


**PUSH IN technology**



**ACT20P  
ACT20P-CMT-60-AO-RC-P**

**Weidmüller Interface GmbH & Co. KG**  
 Klingenbergstraße 26  
 D-32758 Detmold  
 Germany  
 Fon: +49 5231 14-0  
 Fax: +49 5231 14-292083  
 www.weidmueller.com

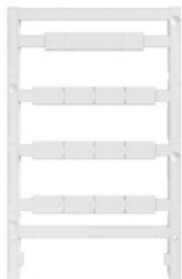
**Accessories**
**Accessories**


Accessories for the analogue signal processing products:

- End plates: for components with terminal-block design
- Retaining clips: for mounting IP6X signal isolators and displays
- Calibration devices: for calibrating and setting analogue signal converters
- MICRO interface: for direct transmission to a controller thus minimizing the wiring overhead
- markers
- Programming adapter: for configuring PC-configurable modules
- Cross-connector
- Power supply modules / power supplies
- Optional connection terminals and cold-junction compensation terminals

**General ordering data**

Type	ESG 8/13.5/43.3 SAI AU	Version
Order No.	<a href="#">1912130000</a>	ESG, Device markers x 13.5 mm, PA 66, Colour: Transparent
GTIN (EAN)	4032248541164	
Qty.	5 pc(s).	

**Accessories for network-compatible current measuring transducers**


Accessories for the analogue signal processing products:

- End plates: for components with terminal-block design
- Retaining clips: for mounting IP6X signal isolators and displays
- Calibration devices: for calibrating and setting analogue signal converters
- MICRO interface: for direct transmission to a controller thus minimizing the wiring overhead
- markers
- Programming adapter: for configuring PC-configurable modules
- Cross-connector
- Power supply modules / power supplies
- Optional connection terminals and cold-junction compensation terminals

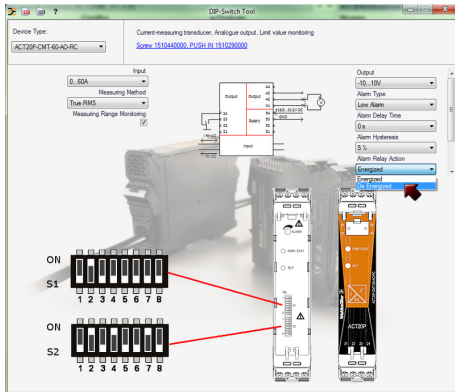
**General ordering data**

Type	ESG 6.6/20 BHZ 5.00/04	Version
Order No.	<a href="#">1082540000</a>	ESG, Device markers x 20 mm, PA 66, Colour: white
GTIN (EAN)	4032248845439	
Qty.	200 pc(s).	

**ACT20P**  
**ACT20P-CMT-60-AO-RC-P**

**Weidmüller Interface GmbH & Co. KG**  
 Klingenbergstraße 26  
 D-32758 Detmold  
 Germany  
 Fon: +49 5231 14-0  
 Fax: +49 5231 14-292083  
 www.weidmueller.com

Drawings



example for DIP switch setting (with ACT20 tool)

example for DIP switch setting (with ACT20 tool)

