

## MetalliCard SFX-M 12/40-5 AL

**Weidmüller Interface GmbH & Co. KG**  
Klingenbergstraße 26  
D-32758 Detmold  
Germany  
Fon: +49 5231 14-0  
Fax: +49 5231 14-292083  
www.weidmueller.com



MetalliCards are available in aluminium or stainless steel to meet a wide range of labelling requirements. The chrome-coated aluminium tags are the inexpensive alternative for a variety of applications, and in particular, they prove themselves through the deep contrasts of their multi-colour print.

In the technologically demanding chemical and process industries, you are on the safe side when using the stainless steel MetalliCard with its outstanding resistance characteristics. Its formats cover the needs of the entire system-identification spectrum. Whether small equipment or type plates, they ensure high-quality marking processes. The MetalliCard also offers optimum installation characteristics. MetalliCards can be used universally thanks to various fixation options: bonding, riveting, with tag holders or rails, or in combination with stainless steel cable ties.

A special punching in the SFX-M allows the use of steel cable ties.

**For custom printing:** Please send us a file of our labeling software M-Print PRO or M-Print PRO Online (without installation) for your labeling specifications.

### General ordering data

Type	SFX-M 12/40-5 AL
Order No.	<a href="#">1500230000</a>
Version	MetalliCard, Conductor and cable markers, 7 - 40 mm, 40 x 12 mm, silver
GTIN (EAN)	405011830876 1
Qty.	50 pc(s).
compatible printer	<a href="#">1324380000</a>

## Data sheet

### MetalliCard SFX-M 12/40-5 AL

**Weidmüller Interface GmbH & Co. KG**  
 Klingenbergstraße 26  
 D-32758 Detmold  
 Germany  
 Fon: +49 5231 14-0  
 Fax: +49 5231 14-292083  
 www.weidmueller.com

## Technical data

### Dimensions and weights

Width	12 mm	Width (inches)	0.472 inch
Height	40 mm	Height (inches)	1.575 inch
Depth	0.8 mm	Depth (inches)	0.031 inch
Net weight	0.82 g		

### General data

Colour	silver	Material	Chrome coated aluminium (AL)
Operating temperature range	-55...130 °C	Recommended industries	Process, Energy
Width	12 mm		

### Conductor and cable markers

Conductor O.D.	7 - 40 mm	Conductor O.D., max.	40 mm
Conductor O.D., min.	7 mm	Conductor cross-section, max.	500 mm <sup>2</sup>
Conductor cross-section, min.	16 mm <sup>2</sup>		

### Classifications

ETIM 6.0	EC001530	ETIM 7.0	EC001530
eClass 9.0	27-40-04-01	eClass 9.1	27-40-04-01
eClass 10.0	27-40-04-01		

### Approvals

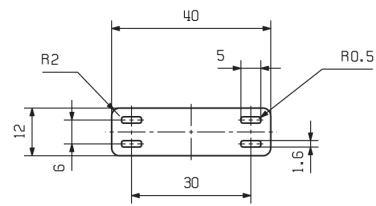
ROHS	Conform
------	---------

### Downloads

Engineering Data	<a href="#">EPLAN, WSCAD</a>
Engineering Data	<a href="#">STEP</a>

**Data sheet****MetalliCard  
SFX-M 12/40-5 AL**

**Weidmüller Interface GmbH & Co. KG**  
Klingenbergstraße 26  
D-32758 Detmold  
Germany  
Fon: +49 5231 14-0  
Fax: +49 5231 14-292083  
www.weidmueller.com

**Drawings**

**MetalliCard  
SFX-M 12/40-5 AL**

**Weidmüller Interface GmbH & Co. KG**  
Klingenbergstraße 26  
D-32758 Detmold  
Germany  
Fon: +49 5231 14-0  
Fax: +49 5231 14-292083  
www.weidmueller.com

**Accessories****Inlay**

MetalliCards are available in aluminium or stainless steel to meet a wide range of labelling requirements. The chrome-coated aluminium tags are the inexpensive alternative for a variety of applications, and in particular, they prove themselves through the deep contrasts of their multi-colour print.

In the technologically demanding chemical and process industries, you are on the safe side when using the stainless steel MetalliCard with its outstanding resistance characteristics. Its formats cover the needs of the entire system-identification spectrum. Whether small equipment or type plates, they ensure high-quality marking processes. The MetalliCard also offers optimum installation characteristics. MetalliCards can be used universally thanks to various fixation options: bonding, riveting, with tag holders or rails, or in combination with stainless steel cable ties.

A special punching in the SFX-M allows the use of steel cable ties.

**For custom printing:** Please send us a file of our labeling software M-Print PRO or M-Print PRO Online (without installation) for your labeling specifications.

**General ordering data**

Type	INLAY SFX-M 12/40
Order No.	<a href="#">1500320000</a>
GTIN (EAN)	4050118308945
Qty.	1 pc(s).

**MetalliCard  
SFX-M 12/40-5 AL**

**Weidmüller Interface GmbH & Co. KG**  
Klingenbergstraße 26  
D-32758 Detmold  
Germany  
Fon: +49 5231 14-0  
Fax: +49 5231 14-292083  
www.weidmueller.com

**Accessories****MetalliCard****Flexible printing on plastic and metal markers**

The PrintJet ADVANCED is an inkjet printer which prints on plastic markers in MultiCard format and metal markers of the MetalliCard family. Thanks to its high loader capacity, it is ideal for printing large volumes in continuous operation. The precise colour printing and thermal fixing guarantee optimum print results for the durable identification of equipment. With these properties, the PrintJet ADVANCED brings efficiency to the operating process – whether operated with the M-Print® PRO software or as a stand-alone solution with preconfigured print templates.

Your benefits at a glance:

- Precise colour printing
- Serial printing of metal markers
- High level of automation thanks to loader capacity of 30 MultiCards
- Durable and robust markers thanks to thermal fixing
- User-friendly operation thanks to intuitive touch display
- Can be used as stand-alone solution

**General ordering data**

Type	PRIMER CC-M
Order No.	<a href="#">2068020000</a>
GTIN (EAN)	4050118416534
Qty.	100 pc(s).