

**cable lug, terminal end
KP-M8/-16**

Weidmüller Interface GmbH & Co. KG
Klingenbergstraße 26
D-32758 Detmold
Germany
Fon: +49 5231 14-0
Fax: +49 5231 14-292083
www.weidmueller.com

**The use of insulated connectors guarantees users consistent electrical connection quality in the long term.**

- Wide range of insulated and non-insulated cable lugs and connectors
- Tubular cable lugs according to current market standards (Euroseries)
- Compression cable lugs acc. to DIN 46235
- Sheet metal cable lugs acc. to DIN 46234
- Insulated ring cable lugs to DIN 46237
- Insulated pin cable lugs to DIN 46231

General ordering data

Type	KP-M8/-16
Order No.	1497940000
Version	cable lug, terminal end, 16 mm ²
GTIN (EAN)	4050118307269
Qty.	100 pc(s).

**cable lug, terminal end
KP-M8/-16**

Weidmüller Interface GmbH & Co. KG
 Klingenbergstraße 26
 D-32758 Detmold
 Germany
 Fon: +49 5231 14-0
 Fax: +49 5231 14-292083
 www.weidmueller.com

Technical data**Dimensions and weights**

Weight	1.3 g	Net weight	13 g
--------	-------	------------	------

Technical data

Version	DIN series 46235, standard
---------	-------------------------------

Connectors

Conductor cross-section	16 mm ²	Connection length (l)	37 mm
Flange width (b)	13 mm	Hole	M8
Identification number Cu	8 K	Inside diameter of flange (d2)	8.4 mm
Inside diameter of shaft (d1)	5.5 mm	Insulation	not available
Outside diameter of shaft (d3)	8.5 mm	Shaft length (a)	20 mm

Classifications

ETIM 6.0	EC001050	ETIM 7.0	EC001050
eClass 9.0	27-40-02-03	eClass 9.1	27-40-02-03
eClass 10.0	27-40-02-03		

Approvals

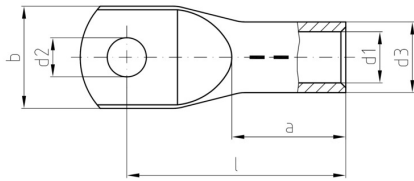
ROHS	Conform
------	---------

Downloads

Brochure/Catalogue	CAT 6 TOOLS 15/16 EN
Engineering Data	EPLAN

Data sheet**cable lug, terminal end
KP-M8/-16**

Weidmüller Interface GmbH & Co. KG
Klingenbergstraße 26
D-32758 Detmold
Germany
Fon: +49 5231 14-0
Fax: +49 5231 14-292083
www.weidmueller.com

Drawings

cable lug, terminal end KP-M8/-16

Weidmüller Interface GmbH & Co. KG
 Klingenbergstraße 26
 D-32758 Detmold
 Germany
 Fon: +49 5231 14-0
 Fax: +49 5231 14-292083
 www.weidmueller.com

Accessories

Crimping tool for tubular (EN 13600) and compression cable lugs (DIN 46235)



Crimping tools for tubular and compression cable lugs with swivel crimping star.

- Integrated crimping star for different cross-sections
- Hexagon crimping tools for compression cable lugs
- WM-From crimping tools for tubular cable lugs
- wide processing range up to 70 or 120 mm²

General ordering data

Type	PZ PK 6/70	Version
Order No.	1500470000	6mm ² , 70mm ²
GTIN (EAN)	4050118309263	
Qty.	1 pc(s).	
Type	PZ PK 10/120	Version
Order No.	1500480000	10mm ² , 120mm ²
GTIN (EAN)	4050118309089	
Qty.	1 pc(s).	

Tools



Crimping tools for cable lugs, connectors and wire-end ferrules with interchangeable inserts

- extremely fast processing thanks to hydraulic support
- large processing range up to 300 mm²
- 270° revolving quick-action crimping head
- automatic pressure limitation and monitoring via pressure sensor
- electronic control and monitoring of the crimping process
- Saving of all crimping cycles and error messages to internal memory
- Reading of all cycles and error messages via USB
- Li-ion rechargeable battery with charge status indicator: 18 V, 1.5 Ah

General ordering data

Type	EPG 60	Version
Order No.	2453810000	Pressing tools, Tools, Pressing tool, 6mm ² , 300mm ² , Hexagonal crimp,
GTIN (EAN)	4050118468434	WM crimp, Indent crimp, Trapezoidal crimp, Oval crimping
Qty.	1 pc(s).	
Type	EPG 45	Version
Order No.	1500830000	Pressing tool, 6mm ² , 150mm ²
GTIN (EAN)	4050118309317	
Qty.	1 pc(s).	

Data sheet

**cable lug, terminal end
KP-M8/-16**

Weidmüller Interface GmbH & Co. KG
 Klingenbergstraße 26
 D-32758 Detmold
 Germany
 Fon: +49 5231 14-0
 Fax: +49 5231 14-292083
 www.weidmueller.com

Accessories

Tools



Crimping tools for cable lugs, connectors and wire-end ferrules with interchangeable inserts

- extremely fast processing thanks to hydraulic support
- large processing range up to 300 mm²
- 270° revolving quick action crimping head
- automatic pressure limitation and monitoring via pressure sensor
- Additional features for APG series:
- electronic control and monitoring of the crimping process
- Saving of all crimping cycles and error messages to internal memory
- Reading of all cycles and error messages via USB

General ordering data

Type	HPG 60	Version
Order No.	2453820000	6mm ² , 300mm ² , Hexagonal crimp, WM crimp, Indent crimp,
GTIN (EAN)	4050118468427	Trapezoidal crimp, Oval crimping
Qty.	1 pc(s).	
Type	APG 80	Version
Order No.	1502390000	6mm ² , 400mm ²
GTIN (EAN)	4050118310627	
Qty.	1 pc(s).	

CTN / HTN



Crimping tools for non-insulated connectors

- Rolled cable lugs, tubular cable lugs, terminal pins, parallel and serial connectors
- Ratchet guarantees precise crimping
 - Release option in the event of incorrect operation

General ordering data

Type	CTN 25 D5	Version
Order No.	9006230000	Pressing tool, Crimping tool for contacts, 10mm ² , 25mm ² , Hexagonal
GTIN (EAN)	4008190198459	crimp
Qty.	1 pc(s).	