

cable lug, terminal end KP-M6/-16

Weidmüller Interface GmbH & Co. KG
Klingenbergstraße 26
D-32758 Detmold
Germany
Fon: +49 5231 14-0
Fax: +49 5231 14-292083
www.weidmueller.com



The use of insulated connectors guarantees users consistent electrical connection quality in the long term.

- Wide range of insulated and non-insulated cable lugs and connectors
- Tubular cable lugs according to current market standards (Euroseries)
- Compression cable lugs acc. to DIN 46235
- Sheet metal cable lugs acc. to DIN 46234
- Insulated ring cable lugs to DIN 46237
- Insulated pin cable lugs to DIN 46231

General ordering data

| | |
|------------|---|
| Type | KP-M6/-16 |
| Order No. | 1497930000 |
| Version | cable lug, terminal end, 16 mm ² |
| GTIN (EAN) | 4050118307290 |
| Qty. | 100 pc(s). |

**cable lug, terminal end
KP-M6/-16**

Weidmüller Interface GmbH & Co. KG
 Klingenbergstraße 26
 D-32758 Detmold
 Germany
 Fon: +49 5231 14-0
 Fax: +49 5231 14-292083
 www.weidmueller.com

Technical data
Dimensions and weights

| | | | |
|--------|--------|------------|---------|
| Weight | 1.27 g | Net weight | 12.66 g |
|--------|--------|------------|---------|

Technical data

| | |
|---------|-------------------------------|
| Version | DIN series 46235, standard |
|---------|-------------------------------|

Connectors

| | | | |
|--------------------------------|--------------------|--------------------------------|---------------|
| Conductor cross-section | 16 mm ² | Connection length (l) | 36 mm |
| Flange width (b) | 13 mm | Hole | M 6 |
| Identification number Cu | 8 K | Inside diameter of flange (d2) | 6.4 mm |
| Inside diameter of shaft (d1) | 5.5 mm | Insulation | not available |
| Outside diameter of shaft (d3) | 8.5 mm | Shaft length (a) | 20 mm |

Classifications

| | | | |
|-------------|-------------|------------|-------------|
| ETIM 6.0 | EC001050 | ETIM 7.0 | EC001050 |
| eClass 9.0 | 27-40-02-03 | eClass 9.1 | 27-40-02-03 |
| eClass 10.0 | 27-40-02-03 | | |

Approvals

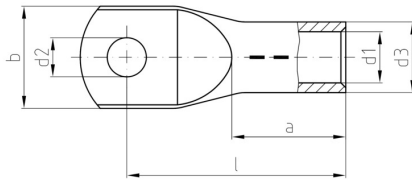
| | |
|------|---------|
| ROHS | Conform |
|------|---------|

Downloads

| | |
|--------------------|--------------------------------------|
| Brochure/Catalogue | CAT 6 TOOLS 15/16 EN |
| Engineering Data | EPLAN |

Data sheet**cable lug, terminal end
KP-M6/-16**

Weidmüller Interface GmbH & Co. KG
Klingenbergstraße 26
D-32758 Detmold
Germany
Fon: +49 5231 14-0
Fax: +49 5231 14-292083
www.weidmueller.com

Drawings

cable lug, terminal end KP-M6/-16

Weidmüller Interface GmbH & Co. KG
 Klingenbergstraße 26
 D-32758 Detmold
 Germany
 Fon: +49 5231 14-0
 Fax: +49 5231 14-292083
 www.weidmueller.com

Accessories

Crimping tool for tubular (EN 13600) and compression cable lugs (DIN 46235)



Crimping tools for tubular and compression cable lugs with swivel crimping star.

- Integrated crimping star for different cross-sections
- Hexagon crimping tools for compression cable lugs
- WM-From crimping tools for tubular cable lugs
- wide processing range up to 70 or 120 mm²

General ordering data

| | | |
|------------|----------------------------|--|
| Type | PZ PK 6/70 | Version |
| Order No. | 1500470000 | 6mm ² , 70mm ² |
| GTIN (EAN) | 4050118309263 | |
| Qty. | 1 pc(s). | |
| Type | PZ PK 10/120 | Version |
| Order No. | 1500480000 | 10mm ² , 120mm ² |
| GTIN (EAN) | 4050118309089 | |
| Qty. | 1 pc(s). | |

Tools



Crimping tools for cable lugs, connectors and wire-end ferrules with interchangeable inserts

- extremely fast processing thanks to hydraulic support
- large processing range up to 300 mm²
- 270° revolving quick-action crimping head
- automatic pressure limitation and monitoring via pressure sensor
- electronic control and monitoring of the crimping process
- Saving of all crimping cycles and error messages to internal memory
- Reading of all cycles and error messages via USB
- Li-ion rechargeable battery with charge status indicator: 18 V, 1.5 Ah

General ordering data

| | | |
|------------|----------------------------|--|
| Type | EPG 60 | Version |
| Order No. | 2453810000 | Pressing tools, Tools, Pressing tool, 6mm ² , 300mm ² , Hexagonal crimp, |
| GTIN (EAN) | 4050118468434 | WM crimp, Indent crimp, Trapezoidal crimp, Oval crimping |
| Qty. | 1 pc(s). | |
| Type | EPG 45 | Version |
| Order No. | 1500830000 | Pressing tool, 6mm ² , 150mm ² |
| GTIN (EAN) | 4050118309317 | |
| Qty. | 1 pc(s). | |

Data sheet

**cable lug, terminal end
KP-M6/-16**

Weidmüller Interface GmbH & Co. KG
 Klingenbergstraße 26
 D-32758 Detmold
 Germany
 Fon: +49 5231 14-0
 Fax: +49 5231 14-292083
 www.weidmueller.com

Accessories

Tools



Crimping tools for cable lugs, connectors and wire-end ferrules with interchangeable inserts

- extremely fast processing thanks to hydraulic support
- large processing range up to 300 mm²
- 270° revolving quick action crimping head
- automatic pressure limitation and monitoring via pressure sensor
- Additional features for APG series:
- electronic control and monitoring of the crimping process
- Saving of all crimping cycles and error messages to internal memory
- Reading of all cycles and error messages via USB

General ordering data

| | | |
|------------|----------------------------|--|
| Type | HPG 60 | Version |
| Order No. | 2453820000 | 6mm ² , 300mm ² , Hexagonal crimp, WM crimp, Indent crimp, |
| GTIN (EAN) | 4050118468427 | Trapezoidal crimp, Oval crimping |
| Qty. | 1 pc(s). | |
| Type | APG 80 | Version |
| Order No. | 1502390000 | 6mm ² , 400mm ² |
| GTIN (EAN) | 4050118310627 | |
| Qty. | 1 pc(s). | |

CTN / HTN



Crimping tools for non-insulated connectors

- Rolled cable lugs, tubular cable lugs, terminal pins, parallel and serial connectors
- Ratchet guarantees precise crimping
 - Release option in the event of incorrect operation

General ordering data

| | | |
|------------|----------------------------|--|
| Type | CTN 25 D5 | Version |
| Order No. | 9006230000 | Pressing tool, Crimping tool for contacts, 10mm ² , 25mm ² , Hexagonal |
| GTIN (EAN) | 4008190198459 | crimp |
| Qty. | 1 pc(s). | |