

**cable lug, terminal end
KP-M5/-10**

Weidmüller Interface GmbH & Co. KG
Klingenbergstraße 26
D-32758 Detmold
Germany
Fon: +49 5231 14-0
Fax: +49 5231 14-292083
www.weidmueller.com

**The use of insulated connectors guarantees users consistent electrical connection quality in the long term.**

- Wide range of insulated and non-insulated cable lugs and connectors
- Tubular cable lugs according to current market standards (Euroseries)
- Compression cable lugs acc. to DIN 46235
- Sheet metal cable lugs acc. to DIN 46234
- Insulated ring cable lugs to DIN 46237
- Insulated pin cable lugs to DIN 46231

General ordering data

Type	KP-M5/-10
Order No.	1497870000
Version	cable lug, terminal end, 10 mm ²
GTIN (EAN)	4050118307252
Qty.	100 pc(s).

**cable lug, terminal end
KP-M5/-10**

Weidmüller Interface GmbH & Co. KG
 Klingenbergstraße 26
 D-32758 Detmold
 Germany
 Fon: +49 5231 14-0
 Fax: +49 5231 14-292083
 www.weidmueller.com

Technical data
Dimensions and weights

Weight	0.35 g	Net weight	3.754 g
--------	--------	------------	---------

Technical data

Version	DIN series 46235, standard
---------	-------------------------------

Connectors

Conductor cross-section	10 mm ²	Connection length (l)	27 mm
Flange width (b)	10 mm	Hole	M 5
Identification number Cu	6 K	Inside diameter of flange (d2)	5.3 mm
Inside diameter of shaft (d1)	4.4 mm	Insulation	not available
Outside diameter of shaft (d3)	6 mm	Shaft length (a)	10 mm

Classifications

ETIM 6.0	EC001050	ETIM 7.0	EC001050
eClass 9.0	27-40-02-03	eClass 9.1	27-40-02-03
eClass 10.0	27-40-02-03		

Approvals

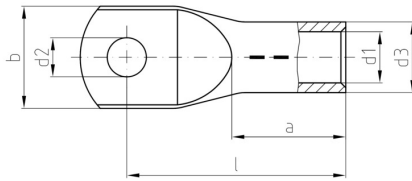
ROHS	Conform
------	---------

Downloads

Brochure/Catalogue	CAT 6 TOOLS 15/16 EN
Engineering Data	EPLAN

Data sheet**cable lug, terminal end
KP-M5/-10**

Weidmüller Interface GmbH & Co. KG
Klingenbergstraße 26
D-32758 Detmold
Germany
Fon: +49 5231 14-0
Fax: +49 5231 14-292083
www.weidmueller.com

Drawings

cable lug, terminal end KP-M5/-10

Weidmüller Interface GmbH & Co. KG
 Klingenbergstraße 26
 D-32758 Detmold
 Germany
 Fon: +49 5231 14-0
 Fax: +49 5231 14-292083
 www.weidmueller.com

Accessories

Crimping tool for tubular (EN 13600) and compression cable lugs (DIN 46235)



Crimping tools for tubular and compression cable lugs with swivel crimping star.

- Integrated crimping star for different cross-sections
- Hexagon crimping tools for compression cable lugs
- WM-From crimping tools for tubular cable lugs
- wide processing range up to 70 or 120 mm²

General ordering data

Type	PZ PK 6/70	Version
Order No.	1500470000	6mm ² , 70mm ²
GTIN (EAN)	4050118309263	
Qty.	1 pc(s).	
Type	PZ PK 10/120	Version
Order No.	1500480000	10mm ² , 120mm ²
GTIN (EAN)	4050118309089	
Qty.	1 pc(s).	

Tools



Crimping tools for cable lugs, connectors and wire-end ferrules with interchangeable inserts

- extremely fast processing thanks to hydraulic support
- large processing range up to 300 mm²
- 270° revolving quick-action crimping head
- automatic pressure limitation and monitoring via pressure sensor
- electronic control and monitoring of the crimping process
- Saving of all crimping cycles and error messages to internal memory
- Reading of all cycles and error messages via USB
- Li-ion rechargeable battery with charge status indicator: 18 V, 1.5 Ah

General ordering data

Type	EPG 60	Version
Order No.	2453810000	Pressing tools, Tools, Pressing tool, 6mm ² , 300mm ² , Hexagonal crimp,
GTIN (EAN)	4050118468434	WM crimp, Indent crimp, Trapezoidal crimp, Oval crimping
Qty.	1 pc(s).	
Type	EPG 45	Version
Order No.	1500830000	Pressing tool, 6mm ² , 150mm ²
GTIN (EAN)	4050118309317	
Qty.	1 pc(s).	

Data sheet

**cable lug, terminal end
KP-M5/-10**

Weidmüller Interface GmbH & Co. KG
 Klingenbergstraße 26
 D-32758 Detmold
 Germany
 Fon: +49 5231 14-0
 Fax: +49 5231 14-292083
 www.weidmueller.com

Accessories

Tools



Crimping tools for cable lugs, connectors and wire-end ferrules with interchangeable inserts

- extremely fast processing thanks to hydraulic support
- large processing range up to 300 mm²
- 270° revolving quick action crimping head
- automatic pressure limitation and monitoring via pressure sensor
- Additional features for APG series:
- electronic control and monitoring of the crimping process
- Saving of all crimping cycles and error messages to internal memory
- Reading of all cycles and error messages via USB

General ordering data

Type	HPG 60	Version
Order No.	2453820000	6mm ² , 300mm ² , Hexagonal crimp, WM crimp, Indent crimp,
GTIN (EAN)	4050118468427	Trapezoidal crimp, Oval crimping
Qty.	1 pc(s).	
Type	APG 80	Version
Order No.	1502390000	6mm ² , 400mm ²
GTIN (EAN)	4050118310627	
Qty.	1 pc(s).	

CTN / HTN



Crimping tools for non-insulated connectors

- Rolled cable lugs, tubular cable lugs, terminal pins, parallel and serial connectors
- Ratchet guarantees precise crimping
 - Release option in the event of incorrect operation

General ordering data

Type	CTN 25 D5	Version
Order No.	9006230000	Pressing tool, Crimping tool for contacts, 10mm ² , 25mm ² , Hexagonal
GTIN (EAN)	4008190198459	crimp
Qty.	1 pc(s).	