

**cable lug, terminal end
KRN-M6/-35 S**

Weidmüller Interface GmbH & Co. KG
Klingenbergstraße 26
D-32758 Detmold
Germany
Fon: +49 5231 14-0
Fax: +49 5231 14-292083
www.weidmueller.com

**The use of insulated connectors guarantees users consistent electrical connection quality in the long term.**

- Wide range of insulated and non-insulated cable lugs and connectors
- Tubular cable lugs according to current market standards (Euroseries)
- Compression cable lugs acc. to DIN 46235
- Sheet metal cable lugs acc. to DIN 46234
- Insulated ring cable lugs to DIN 46237
- Insulated pin cable lugs to DIN 46231

General ordering data

Type	KRN-M6/-35 S
Order No.	1494790000
Version	cable lug, terminal end,35 mm ²
GTIN (EAN)	4050118304466
Qty.	25 pc(s).

Data sheet

cable lug, terminal end KRN-M6/-35 S

Weidmüller Interface GmbH & Co. KG
 Klingenbergstraße 26
 D-32758 Detmold
 Germany
 Fon: +49 5231 14-0
 Fax: +49 5231 14-292083
 www.weidmueller.com

Technical data

Dimensions and weights

Weight	1.93 g	Net weight	19.28 g
--------	--------	------------	---------

Technical data

Version	Euro series, narrow flange
---------	----------------------------

Connectors

Conductor cross-section	35 mm ²	Connection length (l)	33 mm
Flange width (b)	15 mm	Hole	M 6
Inside diameter of flange (d2)	6.4 mm	Inside diameter of shaft (d1)	8.5 mm
Insulation	not available	Outside diameter of shaft (d3)	12 mm
Shaft length (a)	17 mm		

Classifications

ETIM 6.0	EC001051	ETIM 7.0	EC001051
eClass 9.0	27-40-02-05	eClass 9.1	27-40-02-05
eClass 10.0	27-40-02-05		

Approvals

Approvals



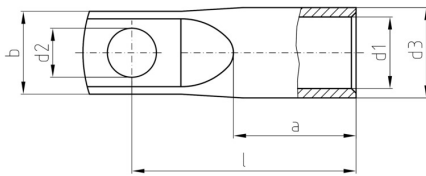
ROHS	Conform
------	---------

Downloads

Brochure/Catalogue	CAT 6 TOOLS 15/16 EN
Engineering Data	EPLAN

Data sheet**cable lug, terminal end
KRN-M6/-35 S**

Weidmüller Interface GmbH & Co. KG
Klingenbergstraße 26
D-32758 Detmold
Germany
Fon: +49 5231 14-0
Fax: +49 5231 14-292083
www.weidmueller.com

Drawings

cable lug, terminal end KRN-M6/-35 S

Weidmüller Interface GmbH & Co. KG
 Klingenbergstraße 26
 D-32758 Detmold
 Germany
 Fon: +49 5231 14-0
 Fax: +49 5231 14-292083
 www.weidmueller.com

Accessories

Crimping tool for tubular (EN 13600) and compression cable lugs (DIN 46235)



Crimping tools for tubular and compression cable lugs with swivel crimping star.

- Integrated crimping star for different cross-sections
- Hexagon crimping tools for compression cable lugs
- WM-From crimping tools for tubular cable lugs
- wide processing range up to 70 or 120 mm²

General ordering data

Type	PZ RK 6/70	Version
Order No.	1500440000	6mm ² , 70mm ²
GTIN (EAN)	4050118309058	
Qty.	1 pc(s).	
Type	PZ RK 10/120	Version
Order No.	1500450000	10mm ² , 120mm ²
GTIN (EAN)	4050118309065	
Qty.	1 pc(s).	

Tools



Crimping tools for cable lugs, connectors and wire-end ferrules with interchangeable inserts

- extremely fast processing thanks to hydraulic support
- large processing range up to 300 mm²
- 270° revolving quick-action crimping head
- automatic pressure limitation and monitoring via pressure sensor
- electronic control and monitoring of the crimping process
- Saving of all crimping cycles and error messages to internal memory
- Reading of all cycles and error messages via USB
- Li-ion rechargeable battery with charge status indicator: 18 V, 1.5 Ah

General ordering data

Type	EPG 60	Version
Order No.	2453810000	Pressing tools, Tools, Pressing tool, 6mm ² , 300mm ² , Hexagonal crimp,
GTIN (EAN)	4050118468434	WM crimp, Indent crimp, Trapezoidal crimp, Oval crimping
Qty.	1 pc(s).	
Type	EPG 45	Version
Order No.	1500830000	Pressing tool, 6mm ² , 150mm ²
GTIN (EAN)	4050118309317	
Qty.	1 pc(s).	

Data sheet

**cable lug, terminal end
KRN-M6/-35 S**

Weidmüller Interface GmbH & Co. KG
 Klingenbergstraße 26
 D-32758 Detmold
 Germany
 Fon: +49 5231 14-0
 Fax: +49 5231 14-292083
 www.weidmueller.com

Accessories

Tools



Crimping tools for cable lugs, connectors and wire-end ferrules with interchangeable inserts

- extremely fast processing thanks to hydraulic support
- large processing range up to 300 mm²
- 270° revolving quick action crimping head
- automatic pressure limitation and monitoring via pressure sensor
- Additional features for APG series:
- electronic control and monitoring of the crimping process
- Saving of all crimping cycles and error messages to internal memory
- Reading of all cycles and error messages via USB

General ordering data

Type	HPG 60	Version
Order No.	2453820000	6mm ² , 300mm ² , Hexagonal crimp, WM crimp, Indent crimp,
GTIN (EAN)	4050118468427	Trapezoidal crimp, Oval crimping
Qty.	1 pc(s).	
Type	APG 80	Version
Order No.	1502390000	6mm ² , 400mm ²
GTIN (EAN)	4050118310627	
Qty.	1 pc(s).	