

**cable lug, terminal end
KSI/-16**

Weidmüller Interface GmbH & Co. KG
Klingenbergstraße 26
D-32758 Detmold
Germany
Fon: +49 5231 14-0
Fax: +49 5231 14-292083
www.weidmueller.com

**Insulated pin-cable connector made from PVC or
PC/PA**

- Conventional designs
- Not soldered
- With conical entry funnel

General ordering data

Type	KSI/-16
Order No.	1491440000
Version	cable lug, terminal end, Insulated cable connector, 16 mm ² , 16 mm ²
GTIN (EAN)	4050118301427
Qty.	50 pc(s).

Creation date May 4, 2020 4:32:14 AM CEST

Catalogue status 17.04.2020 / We reserve the right to make technical changes.

**cable lug, terminal end
KSI/-16**

Weidmüller Interface GmbH & Co. KG
 Klingenbergstraße 26
 D-32758 Detmold
 Germany
 Fon: +49 5231 14-0
 Fax: +49 5231 14-292083
 www.weidmueller.com

Technical data
Dimensions and weights

Net weight	4.86 g
------------	--------

Connectors

Conductor cross-section	16 mm ²	Conductor cross-section, max.	16 mm ²
Identification colour	blue	Inside diameter of collar (d4)	9.1 mm
Inside diameter of shaft (d1)	5.8 mm	Insulation	Available
Length 1 (l1)	40.7 mm	Length 2 (l2)	13.5 mm ²
Material/plastic	PA	Outside diameter of shaft (d3)	2.5 mm

Classifications

ETIM 6.0	EC001059	ETIM 7.0	EC001059
eClass 9.0	27-40-02-92	eClass 9.1	27-40-02-12
eClass 10.0	27-40-02-92		

Approvals

ROHS	Conform
------	---------

Downloads

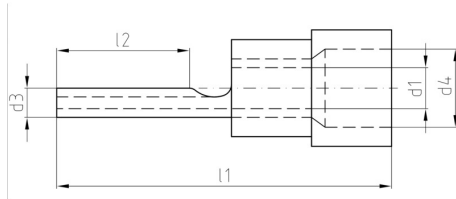
Brochure/Catalogue	CAT 6 TOOLS 15/16 EN
Engineering Data	EPLAN

Data sheet

**cable lug, terminal end
KSI/-16**

Weidmüller Interface GmbH & Co. KG
Klingenbergstraße 26
D-32758 Detmold
Germany
Fon: +49 5231 14-0
Fax: +49 5231 14-292083
www.weidmueller.com

Drawings



cable lug, terminal end KSI/-16

Weidmüller Interface GmbH & Co. KG
 Klingenbergstraße 26
 D-32758 Detmold
 Germany
 Fon: +49 5231 14-0
 Fax: +49 5231 14-292083
 www.weidmueller.com

Accessories

Tools



Crimping tools for cable lugs, connectors and wire-end ferrules with interchangeable inserts

- extremely fast processing thanks to hydraulic support
- large processing range up to 300 mm²
- 270° revolving quick-action crimping head
- automatic pressure limitation and monitoring via pressure sensor
- electronic control and monitoring of the crimping process
- Saving of all crimping cycles and error messages to internal memory
- Reading of all cycles and error messages via USB
- Li-ion rechargeable battery with charge status indicator: 18 V, 1.5 Ah

General ordering data

Type	EPG 60	Version
Order No.	2453810000	Pressing tools, Tools, Pressing tool, 6mm ² , 300mm ² , Hexagonal crimp,
GTIN (EAN)	4050118468434	WM crimp, Indent crimp, Trapezoidal crimp, Oval crimping
Qty.	1 pc(s).	

Tools



Crimping tools for cable lugs, connectors and wire-end ferrules with interchangeable inserts

- extremely fast processing thanks to hydraulic support
- large processing range up to 300 mm²
- 270° revolving quick action crimping head
- automatic pressure limitation and monitoring via pressure sensor
- Additional features for APG series:
- electronic control and monitoring of the crimping process
- Saving of all crimping cycles and error messages to internal memory
- Reading of all cycles and error messages via USB

General ordering data

Type	HPG 60	Version
Order No.	2453820000	6mm ² , 300mm ² , Hexagonal crimp, WM crimp, Indent crimp,
GTIN (EAN)	4050118468427	Trapezoidal crimp, Oval crimping
Qty.	1 pc(s).	