

**cable lug, terminal end
KSI/4,0-6,0**

Weidmüller Interface GmbH & Co. KG
 Klingenbergstraße 26
 D-32758 Detmold
 Germany
 Fon: +49 5231 14-0
 Fax: +49 5231 14-292083
 www.weidmueller.com



Insulated pin-cable connector made from PVC or PC/PA

- Conventional designs
- Not soldered
- With conical entry funnel

General ordering data

Type	KSI/4,0-6,0
Order No.	1491420000
Version	cable lug, terminal end, Insulated cable connector, 4 mm ² - 6 mm ²
GTIN (EAN)	4050118300994
Qty.	100 pc(s).

**cable lug, terminal end
KSI/4,0-6,0**

Weidmüller Interface GmbH & Co. KG
 Klingenbergstraße 26
 D-32758 Detmold
 Germany
 Fon: +49 5231 14-0
 Fax: +49 5231 14-292083
 www.weidmueller.com

Technical data
Dimensions and weights

Net weight	1.87 g
------------	--------

Connectors

Conductor cross-section, max.	6 mm ²	Conductor cross-section, min.	4 mm ²
Identification colour	yellow	Inside diameter of collar (d4)	6.4 mm
Inside diameter of shaft (d1)	3.6 mm	Insulation	Available
Length 1 (l1)	27 mm	Length 2 (l2)	11 mm ²
Material/plastic	PC	Outside diameter of shaft (d3)	2.8 mm

Classifications

ETIM 6.0	EC001059	ETIM 7.0	EC001059
eClass 9.0	27-40-02-92	eClass 9.1	27-40-02-12
eClass 10.0	27-40-02-92		

Approvals

ROHS	Conform
------	---------

Downloads

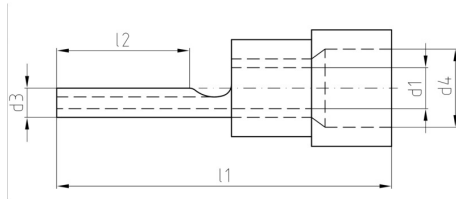
Brochure/Catalogue	CAT 6 TOOLS 15/16 EN
Engineering Data	EPLAN

Data sheet

**cable lug, terminal end
KSI/4,0-6,0**

Weidmüller Interface GmbH & Co. KG
Klingenbergstraße 26
D-32758 Detmold
Germany
Fon: +49 5231 14-0
Fax: +49 5231 14-292083
www.weidmueller.com

Drawings



Data sheet

**cable lug, terminal end
KSI/4,0-6,0**

Weidmüller Interface GmbH & Co. KG
 Klingenbergstraße 26
 D-32758 Detmold
 Germany
 Fon: +49 5231 14-0
 Fax: +49 5231 14-292083
 www.weidmueller.com

Accessories

CTI / HTI



Crimping tools for insulated connectors

cable lugs, terminal pins, parallel and serial connectors, plug-in connectors

- Ratchet guarantees precise crimping
- Release option in the event of incorrect operation
- With stop for exact positioning of the contacts.
- Tested to DIN EN 60352 part 2

General ordering data

Type	CTI 6	Version
Order No.	9006120000	Pressing tool, Crimping tool for contacts, 0.5mm ² , 6mm ² , Oval crimping, Double crimp
GTIN (EAN)	4008190044527	
Qty.	1 pc(s).	
Type	CTI 6 G	Version
Order No.	9202850000	Pressing tool, Tool for insulated cable connectors, 0.5mm ² , 6mm ² , Oval crimping, Parallel crimp
GTIN (EAN)	4032248517855	
Qty.	1 pc(s).	