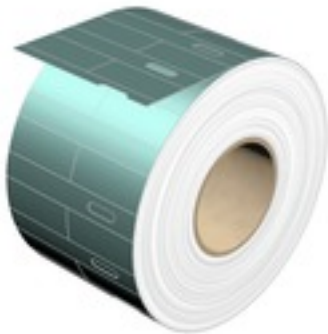


THM THM ET 200SP 12.8/31 TU

Weidmüller Interface GmbH & Co. KG
 Klingenbergstraße 26
 D-32758 Detmold
 Germany
 Fon: +49 5231 14-0
 Fax: +49 5231 14-292083
 www.weidmueller.com



THM ET S7 non-adhesive, roll-packaged labels are used to label the SIMATIC ET 200S, S7-300 and S7-400 modules from Siemens.

- The M-Print® PRO software can be used to individually print the THM ET S7 labels with a THM printer.
- Labels can be easily separated
- The THM Plus S printer ensures highly-resistant printing

General ordering data

Type	THM ET 200SP 12.8/31 TU
Order No.	1487680000
Version	THM, Device markers, 31 x 12.8 mm, Siemens, Turquoise
GTIN (EAN)	4050118296600
Qty.	1 pc(s).
compatible printer	2430920000 2448870000 2599430000 2599440000

Creation date May 4, 2020 4:40:54 AM CEST

THM
THM ET 200SP 12.8/31 TU

Weidmüller Interface GmbH & Co. KG
 Klingenbergstraße 26
 D-32758 Detmold
 Germany
 Fon: +49 5231 14-0
 Fax: +49 5231 14-292083
 www.weidmueller.com

Technical data
Dimensions and weights

Width	12.8 mm	Width (inches)	0.504 inch
Height	31 mm	Height (inches)	1.22 inch
Depth	0.08 mm	Depth (inches)	0.003 inch
Net weight	442 g		

General data

Application/manufacture	Siemens	Approval acc. to UL 969	No
Colour	Turquoise	Halogen	No
Material	Polypropylene	Number per roll	2,000
Operating temperature range	-50...100 °C	Printing method	Thermotransfer
UL 94 flammability rating	HB	Version	halogen-free
Width	12.8 mm		

Classifications

ETIM 6.0	EC001288	ETIM 7.0	EC001288
eClass 9.0	27-40-06-29	eClass 9.1	27-40-06-29
eClass 10.0	27-40-06-29		

Approvals

ROHS	Conform
------	---------

Downloads

Engineering Data	EPLAN_WSCAD
Software	M-Print PRO configuration file

Data sheet

**THM
THM ET 200SP 12.8/31 TU**

Weidmüller Interface GmbH & Co. KG
Klingenbergstraße 26
D-32758 Detmold
Germany
Fon: +49 5231 14-0
Fax: +49 5231 14-292083
www.weidmueller.com

Drawings



Data sheet**THM
THM ET 200SP 12.8/31 TU**

Weidmüller Interface GmbH & Co. KG
Klingenbergstraße 26
D-32758 Detmold
Germany
Fon: +49 5231 14-0
Fax: +49 5231 14-292083
www.weidmueller.com

Accessories**Ink ribbons**

Our marking systems can be used to quickly and reliably label connector markers, conductor and cable markers, device markers and labels. The M-Print® PRO software enables rapid and easy identification of your electrical equipment. You can design, label and order your marking materials professionally and quickly. Frames, barcodes, graphics or photos are easily incorporated. The versatile data conversion routines enable quick and flexible data integration. The Weidmüller PrintJet ADVANCED, MCP Plus and MCP Basic printers and the THM series printers are available for printing.

General ordering data

Type	RIBBON MM 110/360 SW	Version
Order No.	2005070000	Ink ribbon
GTIN (EAN)	4050118390049	
Qty.	1 pc(s).	