

**Bolt-type screw terminals
WF 8/32**

Weidmüller Interface GmbH & Co. KG
Klingenbergstraße 26
D-32758 Detmold
Germany
Fon: +49 5231 14-0
Fax: +49 5231 14-292083
www.weidmueller.com

Product image**Klippon® Connect with stud Technology**

Our stud terminals are an established, robust connection alternative for particularly harsh environments. The extensive accessories and quality workmanship ensure high productivity in planning and installation – and sustainable safety in operation..

General ordering data

Type	WF 8/32
Order No.	1319060000
Version	Bolt-type screw terminals, Feed-through terminal, Rated cross-section: 50 mm², Threaded stud connection
GTIN (EAN)	4050118320060
Qty.	25 pc(s).

Bolt-type screw terminals WF 8/32

Weidmüller Interface GmbH & Co. KG
 Klingenbergstraße 26
 D-32758 Detmold
 Germany
 Fon: +49 5231 14-0
 Fax: +49 5231 14-292083
 www.weidmueller.com

Technical data

Dimensions and weights

Width	21 mm	Width (inches)	0.827 inch
Height	67 mm	Height (inches)	2.638 inch
Depth	70 mm	Depth (inches)	2.756 inch
Net weight	43.03 g		

Temperatures

Storage temperature, max.	40 °C	Storage temperature, min.	10 °C
Storage temperature	10 °C...40 °C	Continuous operating temp., min.	-50 °C
Continuous operating temp., max.	120 °C		

Material data

Material	Wemid	Colour	dark beige
UL 94 flammability rating	V-0		

System specifications

Version	Single-stud terminals	Number of levels	1
Number of clamping points per level	1	Levels cross-connected internally	No
PE connection	No	Rail	TS 32

Additional technical data

Type of mounting	Snap-on
------------------	---------

Conductors for clamping (rated connection)

2 x cable lugs DIN 46 234	2.5 to 50 mm ²	2 x cable lugs DIN 46 235	6...35 mm ²
Cable lug to DIN 46234	2.5...50 mm ²	Cable lug to DIN 46235	6...35 mm ²
Clamping range, max.	50 mm ²	Clamping range, min.	2.5 mm ²
Number of connections	1	Stud size for spade connection	M 8
Tightening torque, max.	12 Nm	Tightening torque, min.	6 Nm
Type of connection	Threaded stud connection		

Rating data

Rated cross-section	50 mm ²	Rated voltage	1,000 V
Voltage with epoxy resin partition plate	2,300 V	Rated current	150 A
Current at maximum wires	150 A	Volume resistance according to IEC 60947-7-x	0.21 mΩ
Power loss in accordance with IEC 60947-7-x	4.8 W	Rated impulse withstand voltage	8 kV
Impulse voltage with epoxy resin partition plate	12 kV	Pollution severity	3

Stud connection

2 x cable lugs DIN 46 234	2.5 to 50 mm ²	2 x cable lugs DIN 46 235	6...35 mm ²
Cable lug to DIN 46234	2.5...50 mm ²	Cable lug to DIN 46235	6...35 mm ²
Impulse voltage with epoxy resin partition plate	12 kV	Stud size for spade connection	M 8
Tightening torque, max.	12 Nm	Tightening torque, min.	6 Nm
Voltage with epoxy resin partition plate	2,300 V		

Bolt-type screw terminals WF 8/32

Weidmüller Interface GmbH & Co. KG
 Klingenbergstraße 26
 D-32758 Detmold
 Germany
 Fon: +49 5231 14-0
 Fax: +49 5231 14-292083
www.weidmueller.com

Technical data

Classifications

ETIM 6.0	EC000897	ETIM 7.0	EC000897
eClass 9.0	27-14-11-20	eClass 9.1	27-14-11-20
eClass 10.0	27-14-11-20		

Approvals

Approvals



ROHS Conform

Downloads

Approval/Certificate/Document of Conformity	CB Test Certificate CB Certificate DE_PT1004_20160418_855_ISSUE01.pdf
Engineering Data	EPLAN, WSCAD
Engineering Data	STEP
User Documentation	StorageConditionsTerminalBlocks

Safety note

Safety notice [Safety Information](#)

Bolt-type screw terminals WF 8/32

Weidmüller Interface GmbH & Co. KG
 Klingenbergstraße 26
 D-32758 Detmold
 Germany
 Fon: +49 5231 14-0
 Fax: +49 5231 14-292083
 www.weidmueller.com

Accessories

Partition plates



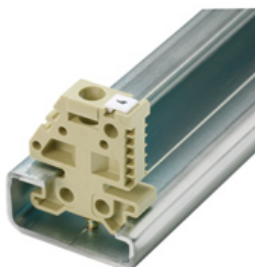
Klippon® Connect with stud Technology

Our stud terminals are an established, robust connection alternative for particularly harsh environments. The extensive accessories and quality workmanship ensure high productivity in planning and installation – and sustainable safety in operation..

General ordering data

Type	WTW WF6-WF12	Version
Order No.	1781240000	Bolt-type screw terminals, Separation plate, dark beige, 2.5 mm
GTIN (EAN)	4032248241156	
Qty.	20 pc(s).	
Type	WTW WF8 2300	Version
Order No.	1780910000	Bolt-type screw terminals, Separation plate, grey, 2 mm
GTIN (EAN)	4032248241132	
Qty.	20 pc(s).	
Type	WTW WF8	Version
Order No.	1780900000	Bolt-type screw terminals, Separation plate, dark beige, 3 mm
GTIN (EAN)	4032248219384	
Qty.	20 pc(s).	

End bracket



Klippon® Connect with clamping yoke Technology

The high reliability and variety of designs of the terminal blocks with clamping yoke connections make planning easier and optimises operational safety. Klippon® Connect provides a proven response to a range of different requirements.

General ordering data

Type	WEW 32/1	Version
Order No.	1067600000	W-Series, End bracket
GTIN (EAN)	4008190099657	
Qty.	50 pc(s).	

Bolt-type screw terminals WF 8/32

Weidmüller Interface GmbH & Co. KG
Klingenbergstraße 26
D-32758 Detmold
Germany
Fon: +49 5231 14-0
Fax: +49 5231 14-292083
www.weidmueller.com

Accessories

Cross-connections



Klippon® Connect with stud Technology

Our stud terminals are an established, robust connection alternative for particularly harsh environments. The extensive accessories and quality workmanship ensure high productivity in planning and installation – and sustainable safety in operation..

General ordering data

Type	WQL 3 WF8	Version
Order No.	1781000000	Bolt-type screw terminals, Cross-connector, Number of poles: 3
GTIN (EAN)	4032248241200	
Qty.	5 pc(s).	
Type	WQL 2 WF8	Version
Order No.	1780990000	Bolt-type screw terminals, Cross-connector, Number of poles: 2
GTIN (EAN)	4032248219414	
Qty.	5 pc(s).	

Blank



WS markers are the perfect match for the W-series connectors. Thanks to their system compatibility, the WS tags can also be used with the I-series and the Z-series. The large marking surfaces do not only permit long character strings but also multi-line text. WS markers are ideal for labels with long, customised character strings. Thanks to the proven MultiCard format, printing with laser printer, PrintJet ADVANCED, plotter or MC-Mobilo is possible.

- Can be fitted in strips or individually
- Markers in proven MultiCard format

For custom printing: Please send us a file of our labeling software M-Print PRO or M-Print PRO Online (without installation) for your labeling specifications.

General ordering data

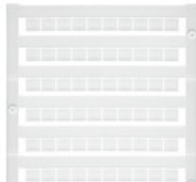
Type	WS 15/5 MC NE WS	Version
Order No.	1609880000	WS, Terminal marker, 15 x 5 mm, Pitch in mm (P): 5.00 Weidmueller,
GTIN (EAN)	4008190203504	Allen-Bradley, white
Qty.	480 pc(s).	

Bolt-type screw terminals WF 8/32

Weidmüller Interface GmbH & Co. KG
 Klingenbergstraße 26
 D-32758 Detmold
 Germany
 Fon: +49 5231 14-0
 Fax: +49 5231 14-292083
 www.weidmueller.com

Accessories

Blank



The Dekafix (DEK) marker is the universal marker for all conductor and plug-in connectors as well as for electronic sub-assemblies. The system is ideal for short number sequences and covers a wide range of ready-printed markers.

Strips for fast installation in only one work step. The printing is easy to read, rich in contrast and available in various widths.

- Large range of ready-to-use markers
- Strips for fast installation
- Terminal markers, suitable for all Weidmüller cable connectors
- Available as blank MultiCard or with standard printing

For custom printing: Please send us a file of our labeling software M-Print PRO or M-Print PRO Online (without installation) for your labeling specifications.

General ordering data

Type	DEK 5/6 MC NE WS	Version
Order No.	1609820000	Dekafix, Terminal marker, 5 x 6 mm, Pitch in mm (P): 6.00
GTIN (EAN)	4008190203436	Weidmueller, white
Qty.	1,000 pc(s).	

Shrouding covers



Klippon® Connect with stud Technology

Our stud terminals are an established, robust connection alternative for particularly harsh environments. The extensive accessories and quality workmanship ensure high productivity in planning and installation – and sustainable safety in operation..

General ordering data

Type	ADP WF6/WF8	Version
Order No.	1780930000	Bolt-type screw terminals, Cover profile, Transparent, 1000 mm
GTIN (EAN)	4032248241248	
Qty.	1 m	
Type	HA ADP WF6/WF10	Version
Order No.	1781050000	Bolt-type screw terminals, Cover profile, dark beige, 2.2 mm
GTIN (EAN)	4032248241231	
Qty.	10 pc(s).	