

**W-Series**  
**WDK 2.5 LD/GN 1D 2R 230**

**Weidmüller Interface GmbH & Co. KG**  
Klingenbergstraße 26  
D-32758 Detmold  
Germany  
Fon: +49 5231 14-0  
Fax: +49 5231 14-292083  
[www.weidmueller.com](http://www.weidmueller.com)

**Product image****Klippon® Connect with clamping yoke Technology**

The high reliability and variety of designs of the terminal blocks with clamping yoke connections make planning easier and optimises operational safety. Klippon® Connect provides a proven response to a range of different requirements.

**General ordering data**

|            |   |
|------------|---|
| Type       | WDK 2.5 LD/GN 1D 2R 230   |
| Order No.  | <a href="#">1303670000</a>  |
| Version    | W-Series, Feed-through terminal, Double-tier terminal, Rated cross-section: 2.5 mm², Screw connection |
| GTIN (EAN) | 4050118102628   |
| Qty.       | 25 pc(s).   |

## W-Series

### WDK 2.5 LD/GN 1D 2R 230

**Weidmüller Interface GmbH & Co. KG**  
 Klingenbergstraße 26  
 D-32758 Detmold  
 Germany  
 Fon: +49 5231 14-0  
 Fax: +49 5231 14-292083  
 www.weidmueller.com

## Technical data

### Dimensions and weights

|            |         |                 |            |
|------------|---------|-----------------|------------|
| Width      | 5.1 mm  | Width (inches)  | 0.201 inch |
| Height     | 69 mm   | Height (inches) | 2.717 inch |
| Depth      | 62.5 mm | Depth (inches)  | 2.461 inch |
| Net weight | 11.71 g |                 |            |

### Temperatures

|                                  |               |                                  |        |
|----------------------------------|---------------|----------------------------------|--------|
| Storage temperature, max.        | 40 °C         | Storage temperature, min.        | 10 °C  |
| Storage temperature              | 10 °C...40 °C | Continuous operating temp., min. | -50 °C |
| Continuous operating temp., max. | 120 °C        |                                  |        |

### Material data

|                           |       |        |            |
|---------------------------|-------|--------|------------|
| Material                  | Wemid | Colour | dark beige |
| UL 94 flammability rating | V-0   |        |            |

### System specifications

|                                     |                            |                               |     |
|-------------------------------------|----------------------------|-------------------------------|-----|
| Version                             | Screw connection, with LED | End cover plate required      | Yes |
| Number of potentials                | 1                          | Number of levels              | 2   |
| Number of clamping points per level | 2                          | Number of potentials per tier | 1   |
| Levels cross-connected internally   | Yes                        | PE connection                 | No  |
| Rail                                | TS 35                      | N-function                    | No  |
| PE function                         | No                         | PEN function                  | No  |

### Additional technical data

|                          |       |                             |         |
|--------------------------|-------|-----------------------------|---------|
| Explosion-tested version | No    | Number of similar terminals | 1       |
| Open sides               | right | Type of mounting            | Snap-on |

### Conductors for clamping (rated connection)

|                      |         |                       |                  |
|----------------------|---------|-----------------------|------------------|
| Connection direction | on side | Number of connections | 3                |
| Stripping length     | 10 mm   | Type of connection    | Screw connection |

### Dimensions

|              |         |
|--------------|---------|
| TS 35 offset | 35.5 mm |
|--------------|---------|

### Rating data

|  |                     |   |        |
|--|---------------------|---|--------|
| Rated cross-section                          | 2.5 mm <sup>2</sup> | Rated voltage                               | 230 V  |
| Volume resistance according to IEC 60947-7-x | 1.33 mΩ             | Power loss in accordance with IEC 60947-7-x | 0.77 W |

### Classifications

|             |             |            |             |
|-------------|-------------|------------|-------------|
| ETIM 6.0    | EC000903    | ETIM 7.0   | EC000903    |
| eClass 9.0  | 27-14-11-27 | eClass 9.1 | 27-14-11-47 |
| eClass 10.0 | 27-14-11-27 |            |             |

### Product information

|                     |   |
|---------------------|---|
| Product information | The allowed continuous operating temperature must be observed |
|---------------------|---|

Creation date May 3, 2020 12:33:05 AM CEST

## W-Series WDK 2.5 LD/GN 1D 2R 230

**Weidmüller Interface GmbH & Co. KG**  
Klingenbergstraße 26  
D-32758 Detmold  
Germany  
Fon: +49 5231 14-0  
Fax: +49 5231 14-292083  
[www.weidmueller.com](http://www.weidmueller.com)

## Technical data

### Approvals

Approvals



ROHS

Conform

### Downloads

|   |  |
|---|--|
| Approval/Certificate/Document of Conformity | <a href="#">DE_PT1081_20160418_672_ISSUE01.pdf</a> |
| Engineering Data                            | <a href="#">EPLAN_WSCAD</a>                        |
| Engineering Data                            | <a href="#">STEP</a>                               |
| User Documentation                          | <a href="#">StorageConditionsTerminalBlocks</a>    |

### Safety note

|               |                                    |
|---------------|------------------------------------|
| Safety notice | <a href="#">Safety Information</a> |
|---------------|------------------------------------|

## W-Series

### WDK 2.5 LD/GN 1D 2R 230

**Weidmüller Interface GmbH & Co. KG**  
 Klingenbergstraße 26  
 D-32758 Detmold  
 Germany  
 Fon: +49 5231 14-0  
 Fax: +49 5231 14-292083  
 www.weidmueller.com

## Accessories

### WQV 2.5



#### Klippon® Connect with clamping yoke Technology

The high reliability and variety of designs of the terminal blocks with clamping yoke connections make planning easier and optimises operational safety. Klippon® Connect provides a proven response to a range of different requirements.

#### General ordering data

|            |                            |   |
|------------|----------------------------|---|
| Type       | WQV 2.5/32                 | Version   |
| Order No.  | <a href="#">1577600000</a> | W-Series, Cross-connector, For the terminals, Number of poles: 32 |
| GTIN (EAN) | 4008190154035              |   |
| Qty.       | 10 pc(s).                  |   |
| Type       | WQV 2.5/8                  | Version   |
| Order No.  | <a href="#">1054260000</a> | W-Series, Cross-connector, For the terminals, Number of poles: 8  |
| GTIN (EAN) | 4008190073572              |   |
| Qty.       | 10 pc(s).                  |   |
| Type       | WQV 2.5/15                 | Version   |
| Order No.  | <a href="#">1059660000</a> | W-Series, Cross-connector, For the terminals, Number of poles: 15 |
| GTIN (EAN) | 4008190002411              |   |
| Qty.       | 10 pc(s).                  |   |
| Type       | WQV 2.5/4                  | Version   |
| Order No.  | <a href="#">1053860000</a> | W-Series, Cross-connector, For the terminals, Number of poles: 4  |
| GTIN (EAN) | 4008190049706              |   |
| Qty.       | 50 pc(s).                  |   |
| Type       | WQV 2.5/30                 | Version   |
| Order No.  | <a href="#">1067500000</a> | W-Series, Cross-connector, For the terminals, Number of poles: 30 |
| GTIN (EAN) | 4008190031107              |   |
| Qty.       | 10 pc(s).                  |   |
| Type       | WQV 2.5/3                  | Version   |
| Order No.  | <a href="#">1053760000</a> | W-Series, Cross-connector, For the terminals, Number of poles: 3  |
| GTIN (EAN) | 4008190058999              |   |
| Qty.       | 50 pc(s).                  |   |
| Type       | WQV 2.5/6                  | Version   |
| Order No.  | <a href="#">1054060000</a> | W-Series, Cross-connector, For the terminals, Number of poles: 6  |
| GTIN (EAN) | 4008190102272              |   |
| Qty.       | 10 pc(s).                  |   |
| Type       | WQV 2.5/2                  | Version   |
| Order No.  | <a href="#">1053660000</a> | W-Series, Cross-connector, For the terminals, Number of poles: 2  |
| GTIN (EAN) | 4008190031121              |   |
| Qty.       | 50 pc(s).                  |   |
| Type       | WQV 2.5/10                 | Version   |
| Order No.  | <a href="#">1054460000</a> | W-Series, Cross-connector, For the terminals, Number of poles: 10 |
| GTIN (EAN) | 4008190135089              |   |
| Qty.       | 20 pc(s).                  |   |
| Type       | WQV 2.5/20                 | Version   |
| Order No.  | <a href="#">1577570000</a> | W-Series, Cross-connector, For the terminals, Number of poles: 20 |
| GTIN (EAN) | 4008190125868              |   |
| Qty.       | 10 pc(s).                  |   |

## W-Series

### WDK 2.5 LD/GN 1D 2R 230

**Weidmüller Interface GmbH & Co. KG**  
 Klingenbergstraße 26  
 D-32758 Detmold  
 Germany  
 Fon: +49 5231 14-0  
 Fax: +49 5231 14-292083  
 www.weidmueller.com

## Accessories

|            |                            |  |
|------------|----------------------------|--|
| Type       | WQV 2.5/5                  | Version  |
| Order No.  | <a href="#">1053960000</a> | W-Series, Cross-connector, For the terminals, Number of poles: 5 |
| GTIN (EAN) | 4008190158446              |  |
| Qty.       | 10 pc(s).                  |  |

|            |                            |  |
|------------|----------------------------|--|
| Type       | WQV 2.5/7                  | Version  |
| Order No.  | <a href="#">1054160000</a> | W-Series, Cross-connector, For the terminals, Number of poles: 7 |
| GTIN (EAN) | 4008190011246              |  |
| Qty.       | 10 pc(s).                  |  |

### With lightning flash



The WAD connector marker is suitable for W-series terminals and for the WEW 35/2 and ZEW 35/2 end brackets. The markers are available as blank markers, with custom printing or standard print with lightning symbol. The WAD MultiCard markers are suitable for labelling with PrintJet ADVANCED printers.

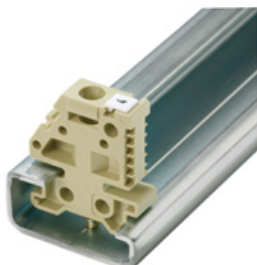
- High-quality and resistant printing with PrintJet
- WAD marker and cover for the W-series terminals and the WEW 35/2 or ZEW 35/2 end brackets
- Available as blank markers, with custom printing or standard print with lightning symbol
- Quick and easy installation

**For custom printing:** Please send us a file of our labeling software M-Print PRO or M-Print PRO Online (without installation) for your labeling specifications.

### General ordering data

|            |                            |   |
|------------|----------------------------|---|
| Type       | WAD 5 MC B GE/SW           | Version   |
| Order No.  | <a href="#">1120450000</a> | Group markers, Cover, 33.3 x 5 mm, Pitch in mm (P): 5.00 yellow |
| GTIN (EAN) | 4032248901272              |   |
| Qty.       | 48 pc(s).                  |   |

### End bracket



#### Klippon® Connect with clamping yoke Technology

The high reliability and variety of designs of the terminal blocks with clamping yoke connections make planning easier and optimises operational safety. Klippon® Connect provides a proven response to a range of different requirements.

### General ordering data

|            |                            |                          |
|------------|----------------------------|--------------------------|
| Type       | EW 35                      | Version                  |
| Order No.  | <a href="#">0383560000</a> | Accessories, End bracket |
| GTIN (EAN) | 4008190181314              |                          |
| Qty.       | 50 pc(s).                  |                          |

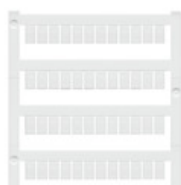
## W-Series

### WDK 2.5 LD/GN 1D 2R 230

**Weidmüller Interface GmbH & Co. KG**  
 Klingenbergstraße 26  
 D-32758 Detmold  
 Germany  
 Fon: +49 5231 14-0  
 Fax: +49 5231 14-292083  
 www.weidmueller.com

## Accessories

### Blank



WS markers are the perfect match for the W-series connectors. Thanks to their system compatibility, the WS tags can also be used with the I-series and the Z-series. The large marking surfaces do not only permit long character strings but also multi-line text. WS markers are ideal for labels with long, customised character strings. Thanks to the proven MultiCard format, printing with laser printer, PrintJet ADVANCED, plotter or MC-Mobilo is possible.

- Can be fitted in strips or individually
- Markers in proven MultiCard format

**For custom printing:** Please send us a file of our labeling software M-Print PRO or M-Print PRO Online (without installation) for your labeling specifications.

### General ordering data

| Type       | WS 8/5 MC NE WS            | Version   |
|------------|----------------------------|---|
| Order No.  | <a href="#">1640740000</a> | WS, Terminal marker, 8 x 5 mm, Pitch in mm (P): 5.00 Weidmueller, |
| GTIN (EAN) | 4008190279103              | Allen-Bradley, white  |
| Qty.       | 720 pc(s).                 |   |

### Blank



The Dekafix (DEK) marker is the universal marker for all conductor and plug-in connectors as well as for electronic sub-assemblies. The system is ideal for short number sequences and covers a wide range of ready-printed markers.

Strips for fast installation in only one work step. The printing is easy to read, rich in contrast and available in various widths.

- Large range of ready-to-use markers
- Strips for fast installation
- Terminal markers, suitable for all Weidmüller cable connectors
- Available as blank MultiCard or with standard printing

**For custom printing:** Please send us a file of our labeling software M-Print PRO or M-Print PRO Online (without installation) for your labeling specifications.

### General ordering data

| Type       | DEK 5/5 MC NE WS           | Version   |
|------------|----------------------------|---|
| Order No.  | <a href="#">1609801044</a> | Dekafix, Terminal marker, 5 x 5 mm, Pitch in mm (P): 5.00 |
| GTIN (EAN) | 4008190397111              | Weidmueller, white  |
| Qty.       | 1,000 pc(s).               |   |

## W-Series

### WDK 2.5 LD/GN 1D 2R 230

**Weidmüller Interface GmbH & Co. KG**  
 Klingenbergstraße 26  
 D-32758 Detmold  
 Germany  
 Fon: +49 5231 14-0  
 Fax: +49 5231 14-292083  
 www.weidmueller.com

## Accessories

### Plus



The Dekafix (DEK) marker is the universal marker for all conductor and plug-in connectors as well as for electronic sub-assemblies. The system is ideal for short number sequences and covers a wide range of ready-printed markers.

Strips for fast installation in only one work step. The printing is easy to read, rich in contrast and available in various widths.

- Large range of ready-to-use markers
- Strips for fast installation
- Terminal markers, suitable for all Weidmüller cable connectors
- Available as blank MultiCard or with standard printing

**For custom printing:** Please send us a file of our labeling software M-Print PRO or M-Print PRO Online (without installation) for your labeling specifications.

### General ordering data

|            |                            |   |
|------------|----------------------------|---|
| Type       | DEK 5/5 PLUS MC NE WS      | Version   |
| Order No.  | <a href="#">1854490000</a> | Dekafix, Terminal marker, 5 x 5 mm, Pitch in mm (P): 5.00 |
| GTIN (EAN) | 4032248393596              | Weidmueller, white  |
| Qty.       | 1,000 pc(s).               |   |

### End plates



### Klippon® Connect with clamping yoke Technology

The high reliability and variety of designs of the terminal blocks with clamping yoke connections make planning easier and optimises operational safety. Klippon® Connect provides a proven response to a range of different requirements.

### General ordering data

|            |                            |                     |
|------------|----------------------------|---------------------|
| Type       | WAP WDK2.5                 | Version             |
| Order No.  | <a href="#">1059100000</a> | W-Series, End plate |
| GTIN (EAN) | 4008190101954              |                     |
| Qty.       | 20 pc(s).                  |                     |

**W-Series**  
**WDK 2.5 LD/GN 1D 2R 230**

**Weidmüller Interface GmbH & Co. KG**  
Klingenbergstraße 26  
D-32758 Detmold  
Germany  
Fon: +49 5231 14-0  
Fax: +49 5231 14-292083  
www.weidmueller.com

**Accessories****Custom printing**

WS markers are the perfect match for the W-series connectors. Thanks to their system compatibility, the WS tags can also be used with the I-series and the Z-series. The large marking surfaces do not only permit long character strings but also multi-line text. WS markers are ideal for labels with long, customised character strings. Thanks to the proven MultiCard format, printing with laser printer, PrintJet ADVANCED, plotter or MC-Mobilo is possible.

- Can be fitted in strips or individually
- Markers in proven MultiCard format

**For custom printing:** Please send us a file of our labeling software M-Print PRO or M-Print PRO Online (without installation) for your labeling specifications.

**General ordering data**

|            |                            |   |
|------------|----------------------------|---|
| Type       | WS 8/5 MC SDR              | Version   |
| Order No.  | <a href="#">1640750000</a> | WS, Terminal marker, 8 x 5 mm, Pitch in mm (P): 5.00 Weidmueller, |
| GTIN (EAN) | 4008190456627              | Allen-Bradley, To customer specification                          |
| Qty.       | 144 pc(s).                 |   |