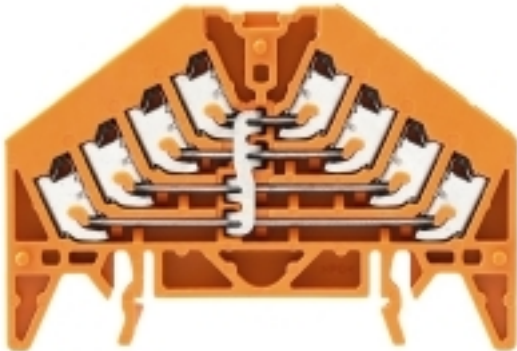


P-series PPV 4 OR 35X7.5 DGR

Weidmüller Interface GmbH & Co. KG
 Klingenbergstraße 26
 D-32758 Detmold
 Germany
 Fon: +49 5231 14-0
 Fax: +49 5231 14-292083
 www.weidmueller.com

Product image



Save space by connecting with these multi-tier terminals with PUSH IN connection technology.

The product line includes the four-channel, eight-channel and also the innovative sixteen-channel feed-through terminal blocks. The four-channel and eight-channel terminals are also available as potential distribution terminals.

The benefits:

- More than 1700 signals per metre can be distributed with the 16-channel terminal block.
- Red and white actuators make it easier to assign wires to their terminal points.
- The PUSH IN connections make wiring quick and convenient.

General ordering data

Type	PPV 4 OR 35X7.5 DGR
Order No.	1301630000
Version	P-series, Potential distributor, Rated cross-section: 1.5 mm ² , Number of levels: 4, Number of connections: 16, Colour: orange
GTIN (EAN)	4050118098983
Qty.	20 pc(s).

**P-series
PPV 4 OR 35X7.5 DGR**

Weidmüller Interface GmbH & Co. KG
 Klingenbergstraße 26
 D-32758 Detmold
 Germany
 Fon: +49 5231 14-0
 Fax: +49 5231 14-292083
 www.weidmueller.com

Technical data**Dimensions and weights**

Width	9.2 mm	Width (inches)	0.362 inch
Height	70 mm	Height (inches)	2.756 inch
Depth	47 mm	Depth (inches)	1.85 inch
Net weight	24.45 g		

Temperatures

Storage temperature, max.	70 °C	Storage temperature, min.	-25 °C
Storage temperature	-25 °C...70 °C	Temperature range, installation, min.	-10 °C
Continuous operating temp., min.	-50 °C	Continuous operating temp., max.	130 °C
Temperature range, installation, max.	40 °C		

Material data

Material	Polycarbonate	Material of operational elements	PBT
Colour	orange	UL 94 flammability rating	V-0

System specifications

Version	PUSH IN connection, Vertically cross-connected, One end without connector	End cover plate required	Yes
Number of potentials	1	Number of levels	4
Number of clamping points per level	4	Number of potentials per tier	1
Levels cross-connected internally	Yes	PE connection	No
Rail	TS 35 x 7.5	N-function	No
PE function	No	PEN function	No

Additional technical data

Type of mounting	Snap-on
------------------	---------

Conductors for clamping (rated connection)

Blade size	0.6 x 3.5 mm	Clamping range, max.	1.5 mm ²
Clamping range, min.	0.13 mm ²	Connection cross-section, stranded, max.	1.5 mm ²
Connection cross-section, stranded, min.	0.5 mm ²	Connection direction	Inclined / angled
Number of connections	16	Stripping length	10 mm
Type of connection	PUSH IN	Wire connection cross section AWG, max.	AWG 16
Wire connection cross section AWG, min.	AWG 24	Wire connection cross section, finely stranded, max.	1.5 mm ²
Wire connection cross-section, finely stranded with wire-end ferrules DIN 46228/1, max.	1.5 mm ²	Wire connection cross-section, finely stranded with wire-end ferrules DIN 46228/1, min.	0.5 mm ²
Wire connection cross-section, finely stranded with wire-end ferrules DIN 46228/4, max.	1.5 mm ²	Wire connection cross-section, finely stranded with wire-end ferrules DIN 46228/4, min.	0.5 mm ²
Wire connection cross-section, finely stranded, min.	0.5 mm ²	Wire connection cross-section, solid core, max.	1.5 mm ²
Wire connection cross-section, solid core, min.	0.5 mm ²		

**P-series
PPV 4 OR 35X7.5 DGR**

Weidmüller Interface GmbH & Co. KG
 Klingenbergstraße 26
 D-32758 Detmold
 Germany
 Fon: +49 5231 14-0
 Fax: +49 5231 14-292083
 www.weidmueller.com

Technical data**Rating data**

Rated cross-section	1.5 mm ²	Rated voltage	250
Rated current	17.5 A	Standards	IEC 60947-7-1, DIN EN 60079
Volume resistance according to IEC 60947-7-x	1.83 mΩ	Power loss in accordance with IEC 60947-7-x	0.56 W
Rated impulse withstand voltage	4 kV	Pollution severity	3
Surge voltage category	III		

UL rating data

Certificate No. (cURus)	E60693	Conductor size Factory wiring max. (cURus)	16 AWG
Conductor size Factory wiring min. (cURus)	26 AWG	Conductor size Field wiring max. (cURus)	16 AWG
Conductor size Field wiring min. (cURus)	26 AWG	Current size B (cURus)	10 A
Current size D (cURus)	10 A	Voltage size B (cURus)	300 V
Voltage size D (cURus)	300 V		

Classifications

ETIM 6.0	EC000897	ETIM 7.0	EC000897
eClass 9.0	27-14-11-20	eClass 9.1	27-14-11-20
eClass 10.0	27-14-11-20		

Approvals

Approvals



ROHS Conform

Downloads

Approval/Certificate/Document of Conformity	DE_PT1441_20160418_298_ISSUE01.pdf
Engineering Data	EPLAN, WSCAD, Zuken E3.S
Engineering Data	STEP
User Documentation	Beipackzettel_PRV_PPV.pdf StorageConditionsTerminalBlocks

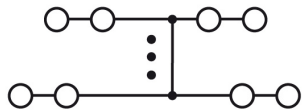
Safety noteSafety notice [Safety Information](#)

Data sheet

**P-series
PPV 4 OR 35X7.5 DGR**

Weidmüller Interface GmbH & Co. KG
Klingenbergstraße 26
D-32758 Detmold
Germany
Fon: +49 5231 14-0
Fax: +49 5231 14-292083
www.weidmueller.com

Drawings



P-series PPV 4 OR 35X7.5 DGR

Weidmüller Interface GmbH & Co. KG
 Klingenbergstraße 26
 D-32758 Detmold
 Germany
 Fon: +49 5231 14-0
 Fax: +49 5231 14-292083
 www.weidmueller.com

Accessories

Cross-connection for base with PUSH IN connection



Weidmüller RIDERSERIES relays guarantee a noise-free, decoupled signal transmission in industrial automation concepts.

The are compact, quickly installed and can be fitted in the tightest of spaces.

- 1 or 2 CO contacts
- optionally: AC or DC coils
- Relay optionally with integrated status display and/or free-wheel diode and optionally combined with a test button
- pluggable LED modules with protective functions
- Metal and plastic retaining clips
- Base with screw / PUSH IN connection

General ordering data

Type	SRC-I QV P	Version
Order No.	8870840000	RIDERSERIES RCI, Cross-connector
GTIN (EAN)	4032248631681	
Qty.	10 pc(s).	

Partition plates



DCS marshalling

Our innovative PRV terminal blocks for DCS marshalling featuring a PUSH IN connection and our multifunctional DCS marshalling terminals featuring a screw connection (WMF) not only save space in the panel; they also guarantee more effective signal transmission in process control systems.

General ordering data

Type	TW PRV4 A-D	Version
Order No.	1230070000	P-series, Seperation plate, grey, 2 mm, Printed A-D, horizontally
GTIN (EAN)	4050118013764	
Qty.	10 pc(s).	
Type	TW PRV4 1-4	Version
Order No.	1230050000	P-series, Seperation plate, grey, 2 mm, Printed 1-4, horizontally
GTIN (EAN)	4050118013818	
Qty.	10 pc(s).	
Type	TW PRV4	Version
Order No.	1173700000	P-series, Seperation plate, grey, 2 mm, Unprinted
GTIN (EAN)	4032248966134	
Qty.	10 pc(s).	
Type	TW PRV4 0-3	Version
Order No.	1230060000	P-series, Seperation plate, grey, 2 mm, Printed 0-3, horizontally
GTIN (EAN)	4050118013733	
Qty.	10 pc(s).	

P-series PPV 4 OR 35X7.5 DGR

Weidmüller Interface GmbH & Co. KG
 Klingenbergstraße 26
 D-32758 Detmold
 Germany
 Fon: +49 5231 14-0
 Fax: +49 5231 14-292083
 www.weidmueller.com

Accessories

End plates



DCS marshalling

Our innovative PRV terminal blocks for DCS marshalling featuring a PUSH IN connection and our multifunctional DCS marshalling terminals featuring a screw connection (WMF) not only save space in the panel; they also guarantee more effective signal transmission in process control systems.

General ordering data

Type	PAP PRV/PPV4 SW	Version
Order No.	1173750000	P-series, End plate, black, 3 mm
GTIN (EAN)	4032248966165	
Qty.	10 pc(s).	
Type	PAP PRV/PPV4 BL	Version
Order No.	1268010000	P-series, End plate, blue, 3 mm
GTIN (EAN)	4032248112999	
Qty.	10 pc(s).	
Type	PAP PRV/PPV4 GR	Version
Order No.	1211450000	P-series, End plate, grey, 3 mm
GTIN (EAN)	4032248992867	
Qty.	10 pc(s).	

Slotted screwdriver

Slotted screwdriver with rounded blade SD DIN 5265, ISO 2380/2, output to DIN 5264, ISO 2380/1. ChromTop tip, SoftFinish grip



General ordering data

Type	SDS 0.6X3.5X100	Version
Order No.	9008330000	Screwdriver, Blade width (B): 3.5 mm, Blade length: 100 mm, Blade thickness (A): 0.6 mm
GTIN (EAN)	4032248056286	
Qty.	1 pc(s).	

Data sheet

**P-series
PPV 4 OR 35X7.5 DGR**

Weidmüller Interface GmbH & Co. KG
 Klingenbergstraße 26
 D-32758 Detmold
 Germany
 Fon: +49 5231 14-0
 Fax: +49 5231 14-292083
 www.weidmueller.com

Accessories

Marking holder



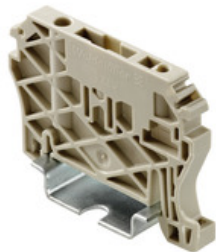
DCS marshalling

Our innovative PRV terminal blocks for DCS marshalling featuring a PUSH IN connection and our multifunctional DCS marshalling terminals featuring a screw connection (WMF) not only save space in the panel; they also guarantee more effective signal transmission in process control systems.

General ordering data

Type	BZT PRV4 SW 35X7.5	Version
Order No.	117360000	P-series, Marker holder, black, Number of levels: 4, TS 35 x 7.5
GTIN (EAN)	4032248966226	
Qty.	20 pc(s).	
Type	BZT PRV4 BL 35X7.5	Version
Order No.	126799000	P-series, Marker holder, blue, Number of levels: 4, TS 35 x 7.5
GTIN (EAN)	4032248112913	
Qty.	20 pc(s).	

End brackets



Spring connection with tension clamp Technology

Tension clamp technology is a universal contact system for all common conductor connection types. Its fantastic level of flexibility makes the tension clamp a profitable alternative connection.

General ordering data

Type	ZEW 35/2 SW	Version
Order No.	116261000	Z-series, End bracket
GTIN (EAN)	4032248962716	
Qty.	20 pc(s).	

Data sheet

**P-series
PPV 4 OR 35X7.5 DGR**

Weidmüller Interface GmbH & Co. KG
 Klingenbergstraße 26
 D-32758 Detmold
 Germany
 Fon: +49 5231 14-0
 Fax: +49 5231 14-292083
 www.weidmueller.com

Accessories

Blank



WS markers are the perfect match for the W-series connectors. Thanks to their system compatibility, the WS tags can also be used with the I-series and the Z-series. The large marking surfaces do not only permit long character strings but also multi-line text. WS markers are ideal for labels with long, customised character strings. Thanks to the proven MultiCard format, printing with laser printer, PrintJet ADVANCED, plotter or MC-Mobilo is possible.

- Can be fitted in strips or individually
- Markers in proven MultiCard format

For custom printing: Please send us a file of our labeling software M-Print PRO or M-Print PRO Online (without installation) for your labeling specifications.

General ordering data

Type	WS 7.8/9.2 PLUS MC NE GR	Version
Order No.	1208970000	WS, Terminal marker, 7.8 x 9.2 mm, Pitch in mm (P): 9.20
GTIN (EAN)	4032248990092	Weidmueller, grey
Qty.	360 pc(s).	