

Industrial Ethernet IE-C6FP8LG0002M40M40-G

Weidmüller Interface GmbH & Co. KG
Klingenbergstraße 26
D-32758 Detmold
Germany
Fon: +49 5231 14-0
Fax: +49 5231 14-292083
www.weidmueller.com



Assembled IE cables, patch cable Cabinet Line, Cat. 6,
LSZH, green

General ordering data

Type	IE-C6FP8LG0002M40M40-G
Order No.	1251590002
Version	Patch cable, RJ45 IP 20, RJ45 IP 20, Cat.6 _A / Class E _A (ISO/IEC 11801 2010), LSZH, 0.2 m
GTIN (EAN)	4050118379631
Qty.	1 pc(s).

Creation date May 2, 2020 6:15:14 PM CEST

Catalogue status 17.04.2020 / We reserve the right to make technical changes.

**Industrial Ethernet
IE-C6FP8LG0002M40M40-G**

Weidmüller Interface GmbH & Co. KG
Klingenbergstraße 26
D-32758 Detmold
Germany
Fon: +49 5231 14-0
Fax: +49 5231 14-292083
www.weidmueller.com

Technical data
Dimensions and weights

Length	0.2 m	Length (inches)	0.008 inch
Net weight	23 g	Insulation cross-section	1.04 mm

Temperatures

Operating temperature, max.	60 °C	Operating temperature, min.	-20 °C
Storage temperature, max.	60 °C	Storage temperature, min.	-20 °C
Operating temperature	-20 °C...60 °C	Storage temperature	-20 °C...60 °C
Installation temperature	0 °C...50 °C		

Environmental Product Compliance

REACH SVHC	Lead 7439-92-1
------------	----------------

Cable specific standards

Application-specific communication cable facilities	ANSI / TIA / EIA-568-B.2-10, ISO / IEC 11801:2002, EN50173-1:2007
-----------------------------------------------------	-------------------------------------------------------------------

Electrical properties

Current-carrying capacity at 50 °C	1 A	Operating voltage	48 V AC / DC
PoE / PoE+	conforming to IEEE 802.3at		

General standards

Certificate no. (cULus)	E316369	Connector standard	IEC 60603-7-51
-------------------------	---------	--------------------	----------------

Cable structure

Copper diameter	0.43 mm	Strands	7
Cross-section	4*2*AWG 27/7 - 4*2*0.1 mm ²	Insulation	PE
Insulation cross-section	1.04 mm	Number of wires	8
Arrangement of wire cores	Twisted pair	Colour sequence or wires - wire pairs	white - blue, white - orange, white - green, white - brown
Shielding	S/FTP	Complete shielding	Shielding braid made from copper wiring
Overlap of shielding braid	60 %	Material sheath	LSZH
Sheath diameter, min.	5.5 mm	Sheath diameter, max.	5.9 mm

**Industrial Ethernet
IE-C6FP8LG0002M40M40-G**

Weidmüller Interface GmbH & Co. KG
 Klingenbergstraße 26
 D-32758 Detmold
 Germany
 Fon: +49 5231 14-0
 Fax: +49 5231 14-292083
 www.weidmueller.com

Technical data**Electrical properties of cable**

Category	Cat.6 _A / Class E _A (ISO/IEC 11801 2010)	Operating voltage	48 V AC / DC
Operating voltage (UL rating)	30 V AC / 42.4 V DC	Test voltage: wire-wire-shield	750 V DC, 1 min
Characteristic impedance	100 ± 15 Ω at 1–100 MHz	Deviation	25 ns/100m
Resistance differential	5 %	Capacity at 1 kHz	46 nF/km
Speed	10 GBit/s	Coupling resistance at 10 MHz	5 mΩ/m
Shield attenuation up to 1000 MHz	60 dB	Coupling attenuation up to 1000 MHz	80 dB
Separating class according to EN 50174-2	d		

Mechanical and material properties of cable

Colour	green	Min. bending radius, once only	25 mm
Min. bending radius, repetitive	50 mm	Speed	10 GBit/s
Resistance to spread of flame	in accordance with IEC 60332-1 / UL 1581 FT2	Halogen	halogen-free, according to IEC 60754-2

Plug, right

Contact surface	Au ≥ 0.8 µm
-----------------	-------------

plug

Connector left	RJ45 IP 20	Connector right	RJ45 IP 20
----------------	------------	-----------------	------------

Classifications

ETIM 6.0	EC002599	ETIM 7.0	EC002599
eClass 9.0	27-06-03-08	eClass 9.1	27-06-03-08
eClass 10.0	27-06-03-08		

Approvals

Approvals



ROHS	Conform
------	---------

Downloads

Approval/Certificate/Document of Conformity	DUXR.E316369
Brochure/Catalogue	CAT 9 IETH 18/19 EN FL FIELDWIRING EN PI PROFINET CABLING EN
Engineering Data	STEP
Product Change Notification	PCN-PB47-20180213-00-A_EN PCN-PB47-20180213-00-A_DE
User Documentation	MAN IE GUIDE DE MAN IE GUIDE EN

Creation date May 2, 2020 6:15:14 PM CEST

Catalogue status 17.04.2020 / We reserve the right to make technical changes.

3

Data sheet

**Industrial Ethernet
IE-C6FP8LG0002M40M40-G**

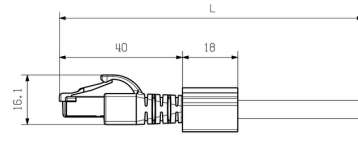
Weidmüller Interface GmbH & Co. KG
 Klingenbergstraße 26
 D-32758 Detmold
 Germany
 Fon: +49 5231 14-0
 Fax: +49 5231 14-292083
 www.weidmueller.com

Drawings

Wiring

RJ45	1	white (orange)	1	RJ45
	2	orange	2	
	3	white (green)	3	
	4	blue	4	
	5	white (blue)	5	
	6	green	6	
	7	white (brown)	7	
	8	brown	8	

Dimensioned drawing

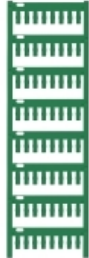


**Industrial Ethernet
IE-C6FP8LG0002M40M40-G**

Weidmüller Interface GmbH & Co. KG
 Klingenbergstraße 26
 D-32758 Detmold
 Germany
 Fon: +49 5231 14-0
 Fax: +49 5231 14-292083
 www.weidmueller.com

Accessories

Blank



TM-I is an acknowledged and accredited marker type for traffic engineering applications. There are five different tag lengths available for individual labelling with long character strings. Easy handling of separation and installation thanks to the project marker field. Pre-attachment of sleeves and retrofitting of tags offer excellent versatility

The special contour of TM-I allows easy assembly and secures firm positioning. They are compatible with a number of commercially available sleeves. Thanks to the MultiCard format, the tags can be printed quickly and conveniently with the SMark laser printer, PrintJet ADVANCED, plotter, MC-Mobilo or the STI pen.

- Easy handling of separation and installation thanks to the project marker field.
- Acknowledged and accredited marker for traffic engineering applications
- Pre-attachment of sleeves and retrofitting of tags offer excellent versatility
- Not suited for labelling with P-Ink or STI pen in connection with CLI T sleeves

For custom printing: Please send us a file of our labeling software M-Print PRO or M-Print PRO Online (without installation) for your labeling specifications.

General ordering data

Type	TM-I 12 MC NE WS	Version
Order No.	1718411044	TM-I, Insert markers, 12 x 4 mm, white
GTIN (EAN)	4008190348977	
Qty.	320 pc(s).	

**Industrial Ethernet
IE-C6FP8LG0002M40M40-G**

Weidmüller Interface GmbH & Co. KG
 Klingenbergstraße 26
 D-32758 Detmold
 Germany
 Fon: +49 5231 14-0
 Fax: +49 5231 14-292083
 www.weidmueller.com

Accessories

Blank



TM-I is an acknowledged and accredited marker type for traffic engineering applications. There are five different tag lengths available for individual labelling with long character strings. Easy handling of separation and installation thanks to the project marker field. Pre-attachment of sleeves and retrofitting of tags offer excellent versatility

The special contour of TM-I allows easy assembly and secures firm positioning. They are compatible with a number of commercially available sleeves. Thanks to the MultiCard format, the tags can be printed quickly and conveniently with the SMark laser printer, PrintJet ADVANCED, plotter, MC-Mobilo or the STI pen.

- Easy handling of separation and installation thanks to the project marker field.
- Acknowledged and accredited marker for traffic engineering applications
- Pre-attachment of sleeves and retrofitting of tags offer excellent versatility
- Not suited for labelling with P-Ink or STI pen in connection with CLI T sleeves

For custom printing: Please send us a file of our labeling software M-Print PRO or M-Print PRO Online (without installation) for your labeling specifications.

General ordering data

Type	TM-I 18 MC NE WS	Version
Order No.	1718431044	TM-I, Insert markers, 18 x 4 mm, white
GTIN (EAN)	4008190349011	
Qty.	320 pc(s).	