

## Industrial Ethernet IE-C6FP8LY0002M40M40-Y

**Weidmüller Interface GmbH & Co. KG**  
Klingenbergstraße 26  
D-32758 Detmold  
Germany  
Fon: +49 5231 14-0  
Fax: +49 5231 14-292083  
www.weidmueller.com



Assembled IE cables, patch cable Cabinet Line, Cat. 6,  
LSZH, yellow

### General ordering data

Type	IE-C6FP8LY0002M40M40-Y
Order No.	<a href="#">1251580002</a>
Version	Patch cable, RJ45 IP 20, RJ45 IP 20, Cat.6 <sub>A</sub> / Class E <sub>A</sub> (ISO/IEC 11801 2010), LSZH, 0.2 m
GTIN (EAN)	4050118379822
Qty.	1 pc(s).

Creation date May 2, 2020 6:11:45 PM CEST

Catalogue status 17.04.2020 / We reserve the right to make technical changes.

**Industrial Ethernet**  
**IE-C6FP8LY0002M40M40-Y**

**Weidmüller Interface GmbH & Co. KG**  
 Klingenbergstraße 26  
 D-32758 Detmold  
 Germany  
 Fon: +49 5231 14-0  
 Fax: +49 5231 14-292083  
 www.weidmueller.com

**Technical data**
**Dimensions and weights**

Length	0.2 m	Length (inches)	0.008 inch
Net weight	0.01 g	Insulation cross-section	1.04 mm

**Temperatures**

Operating temperature, max.	60 °C	Operating temperature, min.	-20 °C
Storage temperature, max.	60 °C	Storage temperature, min.	-20 °C
Operating temperature	-20 °C...60 °C	Storage temperature	-20 °C...60 °C
Installation temperature	0 °C...50 °C		

**Environmental Product Compliance**

REACH SVHC	Lead 7439-92-1
------------	----------------

**Cable specific standards**

Application-specific communication cable facilities	ANSI / TIA / EIA-568-B.2-10, ISO / IEC 11801:2002, EN50173-1:2007
---	---

**Electrical properties**

Current-carrying capacity at 50 °C	1 A	Operating voltage	48 V AC / DC
PoE / PoE+	conforming to IEEE 802.3at		

**General standards**

Certificate no. (cULus)	E316369	Connector standard	IEC 60603-7-51
-------------------------	---------	--------------------	----------------

**Cable structure**

Copper diameter	0.43 mm	Strands	7
Cross-section	4*2*AWG 27/7 - 4*2*0.1 mm <sup>2</sup>	Insulation	PE
Insulation cross-section	1.04 mm	Number of wires	8
Arrangement of wire cores	Twisted pair	Colour sequence or wires - wire pairs	white - blue, white - orange, white - green, white - brown
Shielding	S/FTP	Complete shielding	Shielding braid made from copper wiring
Overlap of shielding braid	60 %	Material sheath	LSZH
Sheath diameter, min.	5.5 mm	Sheath diameter, max.	5.9 mm
Sheathing colour	yellow		

**Industrial Ethernet  
IE-C6FP8LY0002M40M40-Y**

**Weidmüller Interface GmbH & Co. KG**  
 Klingenbergstraße 26  
 D-32758 Detmold  
 Germany  
 Fon: +49 5231 14-0  
 Fax: +49 5231 14-292083  
 www.weidmueller.com

**Technical data****Electrical properties of cable**

Category	Cat.6 <sub>A</sub> / Class E <sub>A</sub> (ISO/IEC 11801 2010)	Operating voltage	48 V AC / DC
Operating voltage (UL rating)	30 V AC / 42.4 V DC	Test voltage: wire-wire-shield	750 V DC, 1 min
Characteristic impedance	100 ± 15 Ω at 1–100 MHz	Deviation	25 ns/100m
Resistance differential	5 %	Capacity at 1 kHz	46 nF/km
Speed	10 GBit/s	Coupling resistance at 10 MHz	5 mΩ/m
Shield attenuation up to 1000 MHz	60 dB	Coupling attenuation up to 1000 MHz	80 dB
Separating class according to EN 50174-2	d		

**Mechanical and material properties of cable**

Colour	yellow	Min. bending radius, once only	25 mm
Min. bending radius, repetitive	50 mm	Speed	10 GBit/s
Resistance to spread of flame	in accordance with IEC 60332-1 / UL 1581 FT2	Halogen	halogen-free, according to IEC 60754-2

**Plug, right**

Contact surface	Au ≥ 0.8 µm
-----------------	-------------

**plug**

Connector left	RJ45 IP 20	Connector right	RJ45 IP 20
----------------	------------	-----------------	------------

**Classifications**

ETIM 6.0	EC002599	ETIM 7.0	EC002599
eClass 9.0	27-06-03-08	eClass 9.1	27-06-03-08
eClass 10.0	27-06-03-08		

**Approvals**

Approvals



ROHS	Conform
------	---------

**Downloads**

Approval/Certificate/Document of Conformity	<a href="#">DUXR.E316369</a>
Brochure/Catalogue	<a href="#">CAT 9 IETH 18/19 EN</a> <a href="#">FL FIELDWIRING EN</a> <a href="#">PI PROFINET CABLING EN</a>
Engineering Data	<a href="#">STEP</a>
Product Change Notification	<a href="#">PCN-PB47-20180213-00-A_EN</a> <a href="#">PCN-PB47-20180213-00-A_DE</a>
User Documentation	<a href="#">MAN IE GUIDE DE</a> <a href="#">MAN IE GUIDE EN</a>

Creation date May 2, 2020 6:11:45 PM CEST

Catalogue status 17.04.2020 / We reserve the right to make technical changes.

3

**Data sheet**

**Industrial Ethernet  
IE-C6FP8LY0002M40M40-Y**

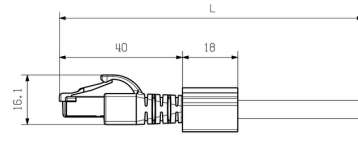
**Weidmüller Interface GmbH & Co. KG**  
 Klingenbergstraße 26  
 D-32758 Detmold  
 Germany  
 Fon: +49 5231 14-0  
 Fax: +49 5231 14-292083  
 www.weidmueller.com

**Drawings**

**Wiring**

RJ45	1	white (orange)	1	RJ45
	2	orange	2	
	3	white (green)	3	
	4	blue	4	
	5	white (blue)	5	
	6	green	6	
	7	white (brown)	7	
	8	brown	8	

**Dimensioned drawing**



**Industrial Ethernet  
IE-C6FP8LY0002M40M40-Y**

**Weidmüller Interface GmbH & Co. KG**  
 Klingenbergstraße 26  
 D-32758 Detmold  
 Germany  
 Fon: +49 5231 14-0  
 Fax: +49 5231 14-292083  
 www.weidmueller.com

**Accessories**

**Blank**



TM-I is an acknowledged and accredited marker type for traffic engineering applications. There are five different tag lengths available for individual labelling with long character strings. Easy handling of separation and installation thanks to the project marker field. Pre-attachment of sleeves and retrofitting of tags offer excellent versatility

The special contour of TM-I allows easy assembly and secures firm positioning. They are compatible with a number of commercially available sleeves. Thanks to the MultiCard format, the tags can be printed quickly and conveniently with the SMark laser printer, PrintJet ADVANCED, plotter, MC-Mobilo or the STI pen.

- Easy handling of separation and installation thanks to the project marker field.
- Acknowledged and accredited marker for traffic engineering applications
- Pre-attachment of sleeves and retrofitting of tags offer excellent versatility
- Not suited for labelling with P-Ink or STI pen in connection with CLI T sleeves

**For custom printing:** Please send us a file of our labeling software M-Print PRO or M-Print PRO Online (without installation) for your labeling specifications.

**General ordering data**

Type	TM-I 12 MC NE WS	Version
Order No.	<a href="#">1718411044</a>	TM-I, Insert markers, 12 x 4 mm, white
GTIN (EAN)	4008190348977	
Qty.	320 pc(s).	

**Industrial Ethernet  
IE-C6FP8LY0002M40M40-Y**

**Weidmüller Interface GmbH & Co. KG**  
 Klingenbergstraße 26  
 D-32758 Detmold  
 Germany  
 Fon: +49 5231 14-0  
 Fax: +49 5231 14-292083  
 www.weidmueller.com

**Accessories**

**Blank**



TM-I is an acknowledged and accredited marker type for traffic engineering applications. There are five different tag lengths available for individual labelling with long character strings. Easy handling of separation and installation thanks to the project marker field. Pre-attachment of sleeves and retrofitting of tags offer excellent versatility

The special contour of TM-I allows easy assembly and secures firm positioning. They are compatible with a number of commercially available sleeves. Thanks to the MultiCard format, the tags can be printed quickly and conveniently with the SMark laser printer, PrintJet ADVANCED, plotter, MC-Mobilo or the STI pen.

- Easy handling of separation and installation thanks to the project marker field.
- Acknowledged and accredited marker for traffic engineering applications
- Pre-attachment of sleeves and retrofitting of tags offer excellent versatility
- Not suited for labelling with P-Ink or STI pen in connection with CLI T sleeves

**For custom printing:** Please send us a file of our labeling software M-Print PRO or M-Print PRO Online (without installation) for your labeling specifications.

**General ordering data**

Type	TM-I 18 MC NE WS	Version
Order No.	<a href="#">1718431044</a>	TM-I, Insert markers, 18 x 4 mm, white
GTIN (EAN)	4008190349011	
Qty.	320 pc(s).	