

## HDC enclosures HDC 32B ALU

**Weidmüller Interface GmbH & Co. KG**  
Klingenbergstraße 26  
D-32758 Detmold  
Germany  
Fon: +49 5231 14-0  
Fax: +49 5231 14-292083  
www.weidmueller.com



The special die-cast alloy and the multi-layered surface sealing provide complete protection for the HDC housings.

The cleverly designed interlock system is manufactured from stainless steel. This guarantees a long lifespan with high resistance to corrosion and impact.

The housing interlock system provides integrated safety. Our unique, patented spring system provides the housing interlock with a secure grip and prevents accidental opening.

The laser marking allows for easy and quick identification. Each housing is permanently labelled with a laser marking so that each product can be quickly designated and positioned.

Weidmüller RockStar® IP 65 / NEMA Type 4X housings - your first choice for industrial housings with IP 65 protection.

### General ordering data

Type	HDC 32B ALU
Order No.	<a href="#">1219500000</a>
Version	HDC enclosures, Size: 10, Protection degree: IP65, Open base, End-locking clamp, lower side, Standard
GTIN (EAN)	4008190011826
Qty.	1 pc(s).

## Data sheet

### HDC enclosures HDC 32B ALU

**Weidmüller Interface GmbH & Co. KG**  
 Klingenbergstraße 26  
 D-32758 Detmold  
 Germany  
 Fon: +49 5231 14-0  
 Fax: +49 5231 14-292083  
 www.weidmueller.com

## Technical data

### Dimensions and weights

Width	120 mm	Width (inches)	4.724 inch
Height	38 mm	Height (inches)	1.496 inch
Depth	126.6 mm	Depth (inches)	4.984 inch
Mounting dimension - width	110 mm	Mounting dimension - height	65 mm
Net weight	251 g		

### Temperatures

Limit temperature -40 °C ... 125 °C

### Environmental Product Compliance

REACH SVHC Lead 7439-92-1, DIBP 84-69-5, Potassium perfluorobutane sulfonate 29420-49-3

### Dimensions

Height of base B1	7 mm	Height of housing B	38 mm
Hole pitch length A2	110 mm	Total length housing	94 mm
Width base C1	89 mm	Width housing C	82.5 mm

### General data

EMC housings	No	Housing main material	diecast aluminium
Material of locking element	Stainless steel, rust-proof	Protection degree	IP65
Surface finish	Powder coating	Tightening torque	2 Nm

### Version

Clamp version	End-locking clamp	Design	Standard
Design of housing	Open base	Design of locking system	End-locking clamp, lower side
Sealing	NBR	Size	10
Suitable for ModuPlug®	Yes	Tightening torque	2 Nm
Top part/bottom part/lid	lower part	Type	Bulkhead (feed-through)

### Classifications

ETIM 6.0	EC000437	ETIM 7.0	EC000437
eClass 9.0	27-44-02-02	eClass 9.1	27-44-02-02
eClass 10.0	27-44-02-02	UNSPSC	30-21-18-01

### Approvals

Approvals



**Data sheet****HDC enclosures  
HDC 32B ALU**

**Weidmüller Interface GmbH & Co. KG**  
Klingenbergstraße 26  
D-32758 Detmold  
Germany  
Fon: +49 5231 14-0  
Fax: +49 5231 14-292083  
www.weidmueller.com

**Technical data****Downloads**

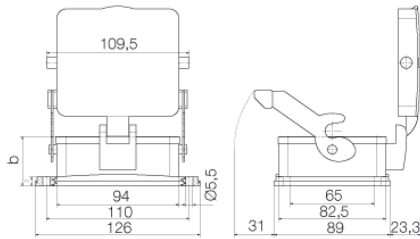
Brochure/Catalogue	<a href="#">CAT 3 HDC 17/18 EN</a> <a href="#">FL FIELDWIRING EN</a>
Engineering Data	<a href="#">EPLAN, WSCAD</a>
Engineering Data	<a href="#">STEP</a>
Technical Documentation	<a href="#">1219500000_HDC_32B_ALU_STP_Blatt_1.pdf</a>

**Data sheet**

**HDC enclosures  
HDC 32B ALU**

**Weidmüller Interface GmbH & Co. KG**  
Klingenbergstraße 26  
D-32758 Detmold  
Germany  
Fon: +49 5231 14-0  
Fax: +49 5231 14-292083  
[www.weidmueller.com](http://www.weidmueller.com)

**Drawings**



**HDC enclosures  
HDC 32B ALU**

**Weidmüller Interface GmbH & Co. KG**  
 Klingenbergstraße 26  
 D-32758 Detmold  
 Germany  
 Fon: +49 5231 14-0  
 Fax: +49 5231 14-292083  
 www.weidmueller.com

**Accessories**

**Housing, cable entry at top**



The special die-cast alloy and the multi-layered surface sealing provide complete protection for the HDC housings.  
 The cleverly designed interlock system is manufactured from stainless steel. This guarantees a long lifespan with high resistance to corrosion and impact.  
 The housing interlock system provides integrated safety. Our unique, patented spring system provides the housing interlock with a secure grip and prevents accidental opening.  
 The laser marking allows for easy and quick identification. Each housing is permanently labelled with a laser marking so that each product can be quickly designated and positioned.  
 Weidmüller RockStar® IP 65 / NEMA Type 4X housings - your first choice for industrial housings with IP 65 protection.

**General ordering data**

Type	HDC 32B TOLU 1M32G	Version
Order No.	<a href="#">1788450000</a>	HDC enclosures, Size: 10, Protection degree: IP65, Cable entry from top, Plug housing, End-locking clamp, lower side, Standard, Size of cable entries: M 32
GTIN (EAN)	4032248205981	
Qty.	1 pc(s).	
Type	HDC 32B TOLU 1PG29G	Version
Order No.	<a href="#">1219300000</a>	HDC enclosures, Size: 10, Protection degree: IP65, Cable entry from top, Plug housing, End-locking clamp, lower side, Standard, Size of cable entries: PG 29
GTIN (EAN)	4008190164652	
Qty.	1 pc(s).	

**Housing, cable entry sideways**



The special die-cast alloy and the multi-layered surface sealing provide complete protection for the HDC housings.  
 The cleverly designed interlock system is manufactured from stainless steel. This guarantees a long lifespan with high resistance to corrosion and impact.  
 The housing interlock system provides integrated safety. Our unique, patented spring system provides the housing interlock with a secure grip and prevents accidental opening.  
 The laser marking allows for easy and quick identification. Each housing is permanently labelled with a laser marking so that each product can be quickly designated and positioned.  
 Weidmüller RockStar® IP 65 / NEMA Type 4X housings - your first choice for industrial housings with IP 65 protection.

**General ordering data**

Type	HDC 32B TSLU 1M32G	Version
Order No.	<a href="#">1788420000</a>	HDC enclosures, Size: 10, Protection degree: IP65, Cable entry from side, Plug housing, End-locking clamp, lower side, Standard, Size of cable entries: M 32
GTIN (EAN)	4032248205950	
Qty.	1 pc(s).	

**Data sheet****HDC enclosures  
HDC 32B ALU**

**Weidmüller Interface GmbH & Co. KG**  
Klingenbergstraße 26  
D-32758 Detmold  
Germany  
Fon: +49 5231 14-0  
Fax: +49 5231 14-292083  
www.weidmueller.com

**Accessories**

Type	HDC 32B TSLU 1PG29G	Version
Order No.	<a href="#">1667120000</a>	HDC enclosures, Size: 10, Protection degree: IP65, Cable entry from
GTIN (EAN)	4008190424329	side, Plug housing, End-locking clamp, lower side, Standard, Size of
Qty.	1 pc(s).	cable entries: PG 29