

RS-SERIES

RS 32 115-230VUC LD 2U

Weidmüller Interface GmbH & Co. KG
 Klingenbergstraße 26
 D-32758 Detmold
 Germany
 Fon: +49 5231 14-0
 Fax: +49 5231 14-292083
 www.weidmueller.com

Product image



Similar to illustration

Clip-on RS 30. 31. 32 relay bases are available in widths from 11.2 to 25 mm, depending on the type. The RSM relay multiplexers are available as 4, 8 and 16-way modules. To reduce the wiring work, the DC variants are fitted with a common plus or minus potential. The optional IEC603-1 plug-in connector enables the connection of pre-assembled lines. The screw connection system is used to connect the conductor with a rated cross-section of 2.5 mm².

General ordering data

Type	RS 32 115-230VUC LD 2U
Order No.	1122761001
Version	RS-SERIES, Relay module, Number of contacts: 2 CO contact AgNi 90/10, Rated control voltage: 115 V UC +5 % / -15 %, 230 V UC +5 % / -15 %, Continuous current: 4 A, Screw connection
GTIN (EAN)	4032248046232
Qty.	10 pc(s).

Creation date May 1, 2020 9:16:05 PM CEST

Catalogue status 17.04.2020 / We reserve the right to make technical changes.

RS-SERIES
RS 32 115-230VUC LD 2U

Weidmüller Interface GmbH & Co. KG
 Klingenbergstraße 26
 D-32758 Detmold
 Germany
 Fon: +49 5231 14-0
 Fax: +49 5231 14-292083
 www.weidmueller.com

Technical data**Dimensions and weights**

Width	25 mm	Width (inches)	0.984 inch
Height	70 mm	Height (inches)	2.756 inch
Depth	63.5 mm	Depth (inches)	2.5 inch
Net weight	46.88 g		

Temperatures

Humidity	40 °C / 93 % rel. humidity, no condensation	Operating temperature, max.	40 °C
Operating temperature, min.	-25 °C	Storage temperature, max.	60 °C
Storage temperature, min.	-40 °C	Operating temperature	-25 °C...40 °C
Storage temperature	-40 °C...60 °C		

Environmental Product Compliance

REACH SVHC	Lead 7439-92-1
------------	----------------

Input

Rated control voltage	115 V UC + 5 % / - 15 % / 230 V UC + 5 % / - 15 %	Rated current AC	5.6 mA / 5.3 mA
Rated current DC	5.4 mA / 5 mA	Power rating	1 W / 1 VA
Pull-in/drop-out current, typ.	2 mA AC 1 mA / 1.2 mA DC	Status indicator	red LED
Protective circuit	Rectifier		

Output

Rated switching voltage	250 V AC	Max. switching voltage, AC	250 V
Continuous current	4 A	Inrush current	6 A
AC switching capacity (resistive), max.	1000 VA	Switch-on delay	< 13 ms
Switch-off delay	≤ 10 ms	Duration of Bounce	≤ 4 ms
Min. switching power	1 mA @ 24 V, 10 mA @ 10 V, 100 mA / 5 V DC	Max. switching frequency at rated load	0.1 Hz

Contact data

Contact type	2 CO contact (AgNi 90/10)	Mechanical service life	30 x 10 ⁶ switching cycles
--------------	---------------------------	-------------------------	---------------------------------------

General data

Version	soldered relay	Rail	TS 32, TS 35
Test button	No	Mechanical switch position indicator	No
Colour	orange		

Insulation coordination

Rated voltage	300 V	Surge voltage category	III
Pollution severity	2	Protection degree	IP20
Creepage and clearance distance input - output	> 3 mm	Dielectric strength to mounting rail	4 kV _{eff} / 1 Min.
Impulse withstand voltage	4 kV (1.2/50 µs)		

Creation date May 1, 2020 9:16:05 PM CEST

Catalogue status 17.04.2020 / We reserve the right to make technical changes.

RS-SERIES
RS 32 115-230VUC LD 2U

Weidmüller Interface GmbH & Co. KG
 Klingenbergstraße 26
 D-32758 Detmold
 Germany
 Fon: +49 5231 14-0
 Fax: +49 5231 14-292083
 www.weidmueller.com

Technical data**Further details of approvals / standards**

Standards	DIN EN 50178
-----------	--------------

Connection data

Wire connection method	Screw connection	Stripping length, rated connection	8 mm
Clamping range, rated connection	2.5 mm ²	Clamping range, min.	0.5 mm ²
Clamping range, max.	4 mm ²		

Classifications

ETIM 6.0	EC001437	ETIM 7.0	EC001437
eClass 9.0	27-37-16-01	eClass 9.1	27-37-16-01
eClass 10.0	27-37-16-01	UNSPSC	30-21-19-17

Approvals

Approvals



ROHS	Conform
------	---------

Downloads

Approval/Certificate/Document of Conformity	DE_PA_5600_160311_001.pdf
Engineering Data	EPLAN, WSCAD

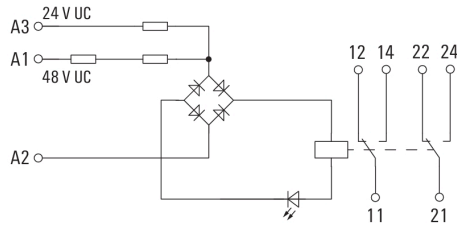
Data sheet

RS-SERIES
RS 32 115-230VUC LD 2U

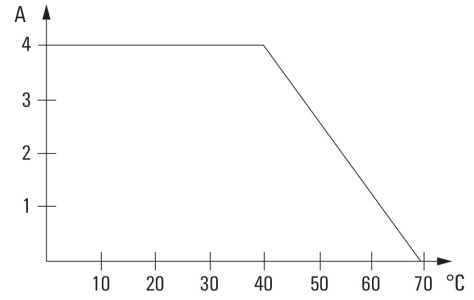
Weidmüller Interface GmbH & Co. KG
Klingenbergstraße 26
D-32758 Detmold
Germany
Fon: +49 5231 14-0
Fax: +49 5231 14-292083
www.weidmueller.com

Drawings

Wiring diagram



Graph



DC load limit curve