

## HDC enclosures

### HDC HB 24 TEK TSS1xM40G

**Weidmüller Interface GmbH & Co. KG**

Klingenbergstraße 26

D-32758 Detmold

Germany

Fon: +49 5231 14-0

Fax: +49 5231 14-292083

www.weidmueller.com



The new RockStar® enclosures are resistant to seawater and offer a high degree of shock resistance, meet IP 68 and IP 69K, and have been developed for use under extreme environmental conditions and designed for the high vibration requirements acc. to DIN EN 61373 cat. 2 (bogie). As such, this housing family is ideally suited for fault- and maintenance-free operation of heavy-duty connectors in transport and traffic engineering as well as in power engineering and in applications with extreme requirements. During development, measures were also implemented to make the enclosures extremely EMC-resistant.

#### General ordering data

Available until	2013-12-31
Type	HDC HB 24 TEK TSS1xM40G
Order No.	<a href="#">1000920001</a>
Version	HDC enclosures, Size: 8, Protection degree: IP68, IP69K, Plug housing, Clamping yoke connection, high, Size of cable entries: M 40
GTIN (EAN)	4032248691708
Qty.	1 pc(s).

Creation date May 1, 2020 3:04:26 AM CEST

Catalogue status 17.04.2020 / We reserve the right to make technical changes.

**HDC enclosures  
HDC HB 24 TEK TSS1xM40G**

**Weidmüller Interface GmbH & Co. KG**  
Klingenbergstraße 26  
D-32758 Detmold  
Germany  
Fon: +49 5231 14-0  
Fax: +49 5231 14-292083  
www.weidmueller.com

**Technical data**
**Dimensions and weights**

Width	58 mm	Width (inches)	2.283 inch
Height	120 mm	Height (inches)	4.724 inch
Net weight	731 g		

**Temperatures**

Limit temperature	-50 °C ... 125 °C
-------------------	-------------------

**Dimensions**

Cable entry	w. threading	Height of housing B	120 mm
Total length housing	184 mm		

**General data**

EMC housings	Yes	Housing main material	diecast aluminium
Material of locking element	Stainless steel, rust-proof	Protection degree	IP68, IP69K
Surface finish	Powder coating	Tightening torque	6.5 Nm

**Version**

Cable entry	w. threading	Clamp version	Clamping yoke connection
Design	high	Design of housing	Plug housing
Design of locking system	Clamping yoke connection	Internal thread	M 40
Number of cable entry on top	0	Number of cable entry sideways	1
Size	8	Size of cable entries	M 40
Suitable for ModuPlug®	Yes	Tightening torque	6.5 Nm
Top part/bottom part/lid	upper part	Type	Plug

**Classifications**

ETIM 6.0	EC000437	ETIM 7.0	EC000437
eClass 9.0	27-44-02-02	eClass 9.1	27-44-02-02
eClass 10.0	27-44-02-02	UNSPSC	30-21-18-01

**Approvals**

Approvals



ROHS Conform

**Downloads**

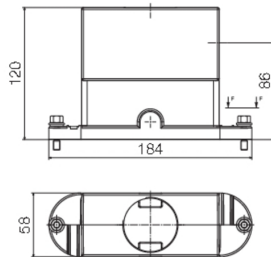
Brochure/Catalogue	<a href="#">CAT 3 HDC 17/18 EN</a> <a href="#">FL FIELDWIRING EN</a>
Engineering Data	<a href="#">EPLAN, WSCAD</a>
Engineering Data	<a href="#">STEP</a>

**Data sheet**

**HDC enclosures  
HDC HB 24 TEK TSS1xM40G**

**Weidmüller Interface GmbH & Co. KG**  
Klingenbergstraße 26  
D-32758 Detmold  
Germany  
Fon: +49 5231 14-0  
Fax: +49 5231 14-292083  
[www.weidmueller.com](http://www.weidmueller.com)

**Drawings**



**HDC enclosures  
HDC HB 24 TEK TSS1xM40G**

**Weidmüller Interface GmbH & Co. KG**  
Klingenbergstraße 26  
D-32758 Detmold  
Germany  
Fon: +49 5231 14-0  
Fax: +49 5231 14-292083  
www.weidmueller.com

**Accessories****Socket wrench sets**

Allen key made from fully hardened, high-alloy chromium-vanadium- steel, acc. to DIN ISO 2936 L (DIN 911), high-quality refined surface.

**General ordering data**

Type	SK WSD-S 1,5-10,0	Version
Order No.	<a href="#">9008850000</a>	Mounting tool
GTIN (EAN)	4032248266609	
Qty.	1 pc(s).	