

Accessories
MOFU 35/LO/1**Weidmüller Interface GmbH & Co. KG**
Klingenbergstraße 26
D-32758 Detmold
Germany
Fon: +49 5231 14-0
Fax: +49 5231 14-292083
www.weidmueller.com**Product image****Clip on and use!**

From the circuit board in the control cabinet: snap-on or mounting feet form the link between plug-in connectors and terminal rails.

Compatible with all standard sizes: TS 15 or TS 35.

Combination foot or variations available.

The quick alternative to screw connections: unbeatable ease of installation and service.

The mounting foot for the terminal rails allows the universal use of pluggable connection systems on the module, the enclosure and the control cabinet and avoids patchwork solutions.

General ordering data

Type	MOFU 35/LO/1
Order No.	0646260000
Version	Accessories, Mounting foot, Polyamide 66
GTIN (EAN)	4008190178574
Qty.	20 pc(s).

Data sheet

Accessories MOFU 35/LO/1

Weidmüller Interface GmbH & Co. KG
 Klingenbergstraße 26
 D-32758 Detmold
 Germany
 Fon: +49 5231 14-0
 Fax: +49 5231 14-292083
 www.weidmueller.com

Technical data

Dimensions and weights

Width	18 mm	Width (inches)	0.709 inch
Height	58 mm	Height (inches)	2.283 inch
Depth	18.35 mm	Depth (inches)	0.722 inch
Net weight	5.704 g		

Material data

Colour	orange	Colour chart (similar)	RAL 2000
UL 94 flammability rating	V-2		

Packing

VPE length	220 mm	VPE width	135 mm
VPE height	35 mm		

Classifications

ETIM 6.0	EC002848	ETIM 7.0	EC002848
eClass 9.0	27-14-11-92	eClass 9.1	27-14-11-92
eClass 10.0	27-14-11-92	UNSPSC	30-21-18-11

Approvals

ROHS	Conform
------	---------

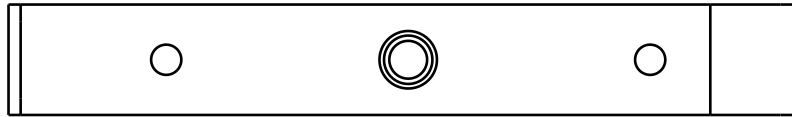
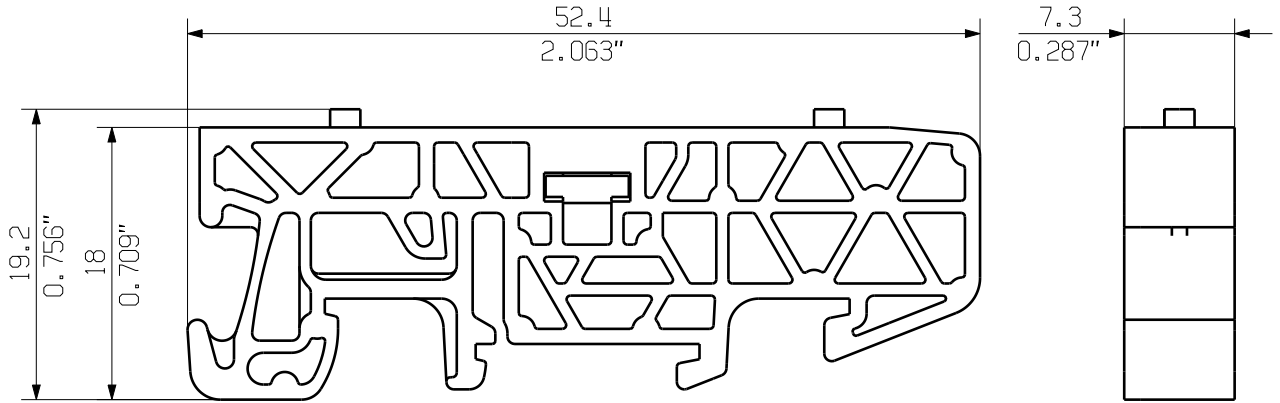
Downloads

Brochure/Catalogue	CAT 1 TERM 16/17 EN
Engineering Data	EPLAN, WSCAD
Engineering Data	STEP
User Documentation	StorageConditionsTerminalBlocks

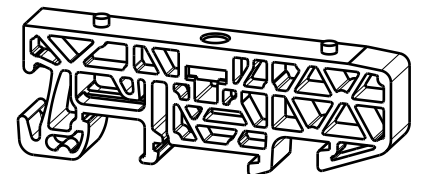
MASSE OHNE TOLERANZ SIND KEINE PRUEFMASSE
DIMS. WITHOUT TOLERANCE ARE NOT CONTROL DIMS.

DIE DEUTSCHE VERSION IST VERBINDLICH
THE GERMAN VERSION IS BINDING

ALLGEMEINGUELTIGE KUNDENZEICHNUNG, AKTUELLER STAND NUR AUF ANFRAGE
GENERAL CUSTOMER DRAWING, TOPICAL VERSION ONLY IF REQUIRED



M 1/1



WEITERGABE SOWIE VERVIELFAELTIGUNG DIESES DOKUMENTS, VERWERTUNG UND MITTEILUNG SEINES INHALTS SIND VERBOTEN, SOWEIT NICHT AUSDRUECKLICH GESTATTET. ZUWIDERHANDLUNGEN VERPFLICHTEN ZU SCHADENERSATZ. ALLE RECHTE FUER DEN FALL DER PATENT-, GEBRAUCHSMUSTER- ODER GESCHMACKSMUSTEREINTRAGUNG VORBEHALTEN. THE REPRODUCTION, DISTRIBUTION AND UTILIZATION OF THIS DOCUMENT AS WELL AS THE COMMUNICATION OF ITS CONTENTS TO OTHERS WITHOUT EXPLICIT AUTHORIZATION IS PROHIBITED. OFFENDERS WILL BE HELD LIABLE FOR THE PAYMENT OF DAMAGES. WEIDMUELLER EXCLUSIVELY RESERVES THE RIGHT TO FILE FOR PATENTS, UTILITY MODELS OR DESIGNS. © WEIDMUELLER INTERFACE GmbH & Co.KG

GENERAL TOLERANCE:
DIN ISO 2768-mK



MAX. NRN./NOS.

84373/5 01
29.09.15
GUETZLAFF_T
MODIFICATION

Weidmüller

CAT.NO.: 193760000
4 42839 02
DRAWING NO. ISSUE NO.
SHEET 01 OF 01 SHEETS



	DATE	NAME
DRAWN	24.02.2006	NEUMANN_G
RESPONSIBLE		KRUG_M
CHECKED	02.10.2015	LANG_T
APPROVED		LANG_T

BV/SV 7.62HP MOFU GR
MONTAGEFUSS
SNAP ON FOOT

SCALE: 2/1

SUPERSEDES: .

PRODUCT FILE: SV/BV 7.62 HP

7340