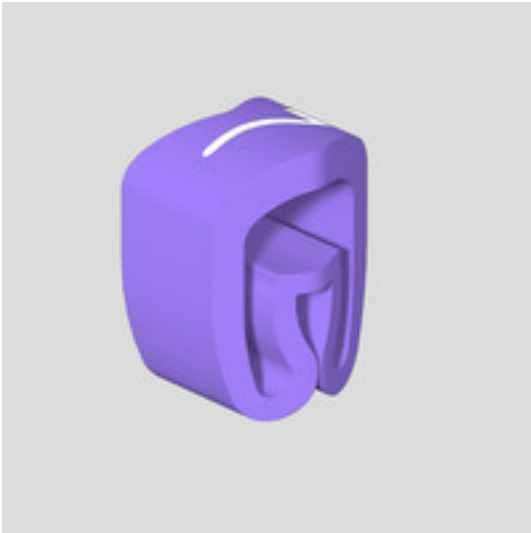


CableLine
CLI C 02-3 VI/WS 7 MP**Weidmüller Interface GmbH & Co. KG**
Klingenbergstraße 26
D-32758 Detmold
Germany
Fon: +49 5231 14-0
Fax: +49 5231 14-292083
www.weidmueller.com

CLI C conductor markers are mounted on unconnected conductors. Four different sizes are available for labelling conductor cross-sections from 0.5 mm² to max. 70 mm². The markers are already printed and ready for use. Individual labelling is possible by combining the individual markers.

- Closed markers, reliable and for mounting on unconnected cables
- A special flexible bellows profile ensures a wide application range
- Fast and easy to fit – with minimal effort
- Corresponding accessories make labelling easy
- Permanent, high-quality labelling
- High contrast for optimum legibility

General ordering data

| | |
|------------|--|
| Type | CLI C 02-3 VI/WS 7 MP |
| Order No. | 0252111524 |
| Version | CableLine, Conductor and cable markers, 1.3 - 3 mm, 3 x 3.4 mm, violet |
| GTIN (EAN) | 4032248005017 |
| Qty. | 200 pc(s). |

Creation date April 30, 2020 8:18:33 PM CEST

Catalogue status 17.04.2020 / We reserve the right to make technical changes.

CableLine CLI C 02-3 VI/WS 7 MP

Weidmüller Interface GmbH & Co. KG
Klingenbergstraße 26
D-32758 Detmold
Germany
Fon: +49 5231 14-0
Fax: +49 5231 14-292083
www.weidmueller.com

Technical data

Dimensions and weights

| | | | |
|------------|---------|-----------------|------------|
| Width | 3.4 mm | Width (inches) | 0.134 inch |
| Height | 3 mm | Height (inches) | 0.118 inch |
| Depth | 3.5 mm | Depth (inches) | 0.138 inch |
| Net weight | 0.045 g | | |

General data

| | | | |
|--|--------------------|-----------------------------|----------------------------|
| Colour | violet | Colour of printing | white |
| Halogen | Yes | Material | PVC, soft, without Cadmium |
| Material colour according to resistance code | 7 | Operating temperature range | -30...80 °C |
| Orientation of print | horizontal | Printed characters | Numbers |
| Printing | 7 | Printing method | hot-embossing |
| Recommended industries | Process, Machinery | Type of printing | Standard |
| UL 94 flammability rating | V-0 | Version | MultiPack |
| Width | 3.4 mm | | |

Conductor and cable markers

| | | | |
|-------------------------------|---------------------|-------------------------------|---------------------|
| Conductor O.D. | 1.3 - 3 mm | Conductor O.D., max. | 3 mm |
| Conductor O.D., min. | 1.3 mm | Conductor cross-section, max. | 1.5 mm ² |
| Conductor cross-section, min. | 0.2 mm ² | Halogen | Yes |

Classifications

| | | | |
|-------------|-------------|------------|-------------|
| ETIM 6.0 | EC001530 | ETIM 7.0 | EC001530 |
| eClass 9.0 | 27-40-04-01 | eClass 9.1 | 27-40-04-01 |
| eClass 10.0 | 27-40-04-01 | UNSPSC | 44-12-17-08 |

Approvals

| | |
|------|---------|
| ROHS | Conform |
|------|---------|

Downloads

| | |
|-----------------------------|--|
| Engineering Data | EPLAN, WSCAD |
| Product Change Notification | PCN CableLine_DE PCN CableLine_EN |

CableLine CLI C 02-3 VI/WS 7 MP

Weidmüller Interface GmbH & Co. KG
Klingenbergstraße 26
D-32758 Detmold
Germany
Fon: +49 5231 14-0
Fax: +49 5231 14-292083
www.weidmueller.com

Accessories

0 - 9



The Weidmüller range of conductor and cable marker products provides users with solutions for the most diverse applications. The range of applications extends from narrow conductors right up to cables with large outside diameters. Among the products in the range are combination systems with individual tags, transparent sleeves, shrink-fit sleeves and markers, which can be fixed with cable ties.

General ordering data

| | | |
|------------|----------------------------|---|
| Type | CLI R 02-3 GE/SW 1 | Version |
| Order No. | 0560001504 | CableLine, Mounting mandrel, 1.3 - 3 mm, 3 x 3.4 mm, yellow |
| GTIN (EAN) | 4008190046590 | |
| Qty. | 10 pc(s). | |
| Type | CLI R 02-3 GE/SW 8 | Version |
| Order No. | 0560001525 | CableLine, Mounting mandrel, 1.3 - 3 mm, 3 x 3.4 mm, yellow |
| GTIN (EAN) | 4008190154875 | |
| Qty. | 10 pc(s). | |
| Type | CLI R 02-3 GE/SW 2 | Version |
| Order No. | 0560001507 | CableLine, Mounting mandrel, 1.3 - 3 mm, 3 x 3.4 mm, yellow |
| GTIN (EAN) | 4008190083137 | |
| Qty. | 10 pc(s). | |
| Type | CLI R 02-3 GE/SW 9 | Version |
| Order No. | 0560001528 | CableLine, Mounting mandrel, 1.3 - 3 mm, 3 x 3.4 mm, yellow |
| GTIN (EAN) | 4008190141516 | |
| Qty. | 10 pc(s). | |
| Type | CLI R 02-3 GE/SW 5 | Version |
| Order No. | 0560001516 | CableLine, Mounting mandrel, 1.3 - 3 mm, 3 x 3.4 mm, yellow |
| GTIN (EAN) | 4008190188436 | |
| Qty. | 10 pc(s). | |
| Type | CLI R 02-3 GE/SW 7 | Version |
| Order No. | 0560001522 | CableLine, Mounting mandrel, 1.3 - 3 mm, 3 x 3.4 mm, yellow |
| GTIN (EAN) | 4008190185213 | |
| Qty. | 10 pc(s). | |
| Type | CLI R 02-3 GE/SW 3 | Version |
| Order No. | 0560001510 | CableLine, Mounting mandrel, 1.3 - 3 mm, 3 x 3.4 mm, yellow |
| GTIN (EAN) | 4008190046941 | |
| Qty. | 10 pc(s). | |
| Type | CLI R 02-3 GE/SW 0 | Version |
| Order No. | 0560001501 | CableLine, Mounting mandrel, 1.3 - 3 mm, 3 x 3.4 mm, yellow |
| GTIN (EAN) | 4008190063498 | |
| Qty. | 10 pc(s). | |
| Type | CLI R 02-3 GE/SW 6 | Version |
| Order No. | 0560001519 | CableLine, Mounting mandrel, 1.3 - 3 mm, 3 x 3.4 mm, yellow |
| GTIN (EAN) | 4008190019129 | |
| Qty. | 10 pc(s). | |

**CableLine
CLI C 02-3 VI/WS 7 MP**

Weidmüller Interface GmbH & Co. KG
Klingenbergstraße 26
D-32758 Detmold
Germany
Fon: +49 5231 14-0
Fax: +49 5231 14-292083
www.weidmueller.com

Accessories

Mandrels single



The Weidmüller range of conductor and cable marker products provides users with solutions for the most diverse applications. The range of applications extends from narrow conductors right up to cables with large outside diameters. Among the products in the range are combination systems with individual tags, transparent sleeves, shrink-fit sleeves and markers, which can be fixed with cable ties.

General ordering data

| | | |
|------------|----------------------------|--|
| Type | CLI R 02 F. CLI C 02-3 | Version |
| Order No. | 0559900000 | CableLine, Mounting mandrel, 150 x 2 mm, red |
| GTIN (EAN) | 4008190081645 | |
| Qty. | 20 pc(s). | |

Others



The Weidmüller range of conductor and cable marker products provides users with solutions for the most diverse applications. The range of applications extends from narrow conductors right up to cables with large outside diameters. Among the products in the range are combination systems with individual tags, transparent sleeves, shrink-fit sleeves and markers, which can be fixed with cable ties.

General ordering data

| | | |
|------------|----------------------------|---|
| Type | CLI R 02-3 RT/WS + | Version |
| Order No. | 0560001739 | CableLine, Mounting mandrel, 1.3 - 3 mm, 3 x 3.4 mm, red |
| GTIN (EAN) | 4008190990145 | |
| Qty. | 10 pc(s). | |
| Type | CLI R 02-3 BL/WS - | Version |
| Order No. | 0560001741 | CableLine, Mounting mandrel, 1.3 - 3 mm, 3 x 3.4 mm, blue |
| GTIN (EAN) | 4008190990107 | |
| Qty. | 10 pc(s). | |

CableLine CLI C 02-3 VI/WS 7 MP

Weidmüller Interface GmbH & Co. KG
Klingenbergstraße 26
D-32758 Detmold
Germany
Fon: +49 5231 14-0
Fax: +49 5231 14-292083
www.weidmueller.com

Accessories

A - Z



The Weidmüller range of conductor and cable marker products provides users with solutions for the most diverse applications. The range of applications extends from narrow conductors right up to cables with large outside diameters. Among the products in the range are combination systems with individual tags, transparent sleeves, shrink-fit sleeves and markers, which can be fixed with cable ties.

General ordering data

| | | |
|------------|----------------------------|---|
| Type | CLI R 02-3 GE/SW S | Version |
| Order No. | 0560001675 | CableLine, Mounting mandrel, 1.3 - 3 mm, 3 x 3.4 mm, yellow |
| GTIN (EAN) | 4008190990008 | |
| Qty. | 10 pc(s). | |
| Type | CLI R 02-3 GE/SW C | Version |
| Order No. | 0560001642 | CableLine, Mounting mandrel, 1.3 - 3 mm, 3 x 3.4 mm, yellow |
| GTIN (EAN) | 4008190989842 | |
| Qty. | 10 pc(s). | |
| Type | CLI R 02-3 GE/SW K | Version |
| Order No. | 0560001658 | CableLine, Mounting mandrel, 1.3 - 3 mm, 3 x 3.4 mm, yellow |
| GTIN (EAN) | 4008190989927 | |
| Qty. | 10 pc(s). | |
| Type | CLI R 02-3 GE/SW R | Version |
| Order No. | 0560001672 | CableLine, Mounting mandrel, 1.3 - 3 mm, 3 x 3.4 mm, yellow |
| GTIN (EAN) | 4008190989996 | |
| Qty. | 10 pc(s). | |
| Type | CLI R 02-3 GE/SW L | Version |
| Order No. | 0560001660 | CableLine, Mounting mandrel, 1.3 - 3 mm, 3 x 3.4 mm, yellow |
| GTIN (EAN) | 4008190989934 | |
| Qty. | 10 pc(s). | |
| Type | CLI R 02-3 GE/SW E | Version |
| Order No. | 0560001646 | CableLine, Mounting mandrel, 1.3 - 3 mm, 3 x 3.4 mm, yellow |
| GTIN (EAN) | 4008190989866 | |
| Qty. | 10 pc(s). | |
| Type | CLI R 02-3 GE/SW P | Version |
| Order No. | 0560001668 | CableLine, Mounting mandrel, 1.3 - 3 mm, 3 x 3.4 mm, yellow |
| GTIN (EAN) | 4008190989972 | |
| Qty. | 10 pc(s). | |
| Type | CLI R 02-3 GE/SW Z | Version |
| Order No. | 0560001699 | CableLine, Mounting mandrel, 1.3 - 3 mm, 3 x 3.4 mm, yellow |
| GTIN (EAN) | 4008190990077 | |
| Qty. | 10 pc(s). | |
| Type | CLI R 02-3 GE/SW V | Version |
| Order No. | 0560001682 | CableLine, Mounting mandrel, 1.3 - 3 mm, 3 x 3.4 mm, yellow |
| GTIN (EAN) | 4008190990039 | |
| Qty. | 10 pc(s). | |
| Type | CLI R 02-3 GE/SW A | Version |
| Order No. | 0560001638 | CableLine, Mounting mandrel, 1.3 - 3 mm, 3 x 3.4 mm, yellow |
| GTIN (EAN) | 4008190989828 | |
| Qty. | 10 pc(s). | |

Creation date April 30, 2020 8:18:33 PM CEST

CableLine CLI C 02-3 VI/WS 7 MP

Weidmüller Interface GmbH & Co. KG
Klingenbergstraße 26
D-32758 Detmold
Germany
Fon: +49 5231 14-0
Fax: +49 5231 14-292083
www.weidmueller.com

Accessories

| | | |
|------------|----------------------------|---|
| Type | CLI R 02-3 GE/SW T | Version |
| Order No. | 0560001678 | CableLine, Mounting mandrel, 1.3 - 3 mm, 3 x 3.4 mm, yellow |
| GTIN (EAN) | 4008190990015 | |
| Qty. | 10 pc(s). | |
| Type | CLI R 02-3 GE/SW F | Version |
| Order No. | 0560001648 | CableLine, Mounting mandrel, 1.3 - 3 mm, 3 x 3.4 mm, yellow |
| GTIN (EAN) | 4008190989873 | |
| Qty. | 10 pc(s). | |
| Type | CLI R 02-3 GE/SW H | Version |
| Order No. | 0560001652 | CableLine, Mounting mandrel, 1.3 - 3 mm, 3 x 3.4 mm, yellow |
| GTIN (EAN) | 4008190989897 | |
| Qty. | 10 pc(s). | |
| Type | CLI R 02-3 GE/SW U | Version |
| Order No. | 0560001680 | CableLine, Mounting mandrel, 1.3 - 3 mm, 3 x 3.4 mm, yellow |
| GTIN (EAN) | 4008190990022 | |
| Qty. | 10 pc(s). | |
| Type | CLI R 02-3 GE/SW M | Version |
| Order No. | 0560001662 | CableLine, Mounting mandrel, 1.3 - 3 mm, 3 x 3.4 mm, yellow |
| GTIN (EAN) | 4008190989941 | |
| Qty. | 10 pc(s). | |
| Type | CLI R 02-3 GE/SW Q | Version |
| Order No. | 0560001670 | CableLine, Mounting mandrel, 1.3 - 3 mm, 3 x 3.4 mm, yellow |
| GTIN (EAN) | 4008190989989 | |
| Qty. | 10 pc(s). | |
| Type | CLI R 02-3 GE/SW G | Version |
| Order No. | 0560001650 | CableLine, Mounting mandrel, 1.3 - 3 mm, 3 x 3.4 mm, yellow |
| GTIN (EAN) | 4008190989880 | |
| Qty. | 10 pc(s). | |
| Type | CLI R 02-3 GE/SW O | Version |
| Order No. | 0560001666 | CableLine, Mounting mandrel, 1.3 - 3 mm, 3 x 3.4 mm, yellow |
| GTIN (EAN) | 4008190989965 | |
| Qty. | 10 pc(s). | |
| Type | CLI R 02-3 GE/SW Y | Version |
| Order No. | 0560001697 | CableLine, Mounting mandrel, 1.3 - 3 mm, 3 x 3.4 mm, yellow |
| GTIN (EAN) | 4008190990060 | |
| Qty. | 10 pc(s). | |
| Type | CLI R 02-3 GE/SW W | Version |
| Order No. | 0560001684 | CableLine, Mounting mandrel, 1.3 - 3 mm, 3 x 3.4 mm, yellow |
| GTIN (EAN) | 4008190990046 | |
| Qty. | 10 pc(s). | |
| Type | CLI R 02-3 GE/SW D | Version |
| Order No. | 0560001644 | CableLine, Mounting mandrel, 1.3 - 3 mm, 3 x 3.4 mm, yellow |
| GTIN (EAN) | 4008190989859 | |
| Qty. | 10 pc(s). | |
| Type | CLI R 02-3 GE/SW B | Version |
| Order No. | 0560001640 | CableLine, Mounting mandrel, 1.3 - 3 mm, 3 x 3.4 mm, yellow |
| GTIN (EAN) | 4008190989835 | |
| Qty. | 10 pc(s). | |
| Type | CLI R 02-3 GE/SW J | Version |
| Order No. | 0560001656 | CableLine, Mounting mandrel, 1.3 - 3 mm, 3 x 3.4 mm, yellow |
| GTIN (EAN) | 4008190989910 | |
| Qty. | 10 pc(s). | |

Creation date April 30, 2020 8:18:33 PM CEST

Catalogue status 17.04.2020 / We reserve the right to make technical changes.

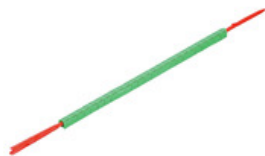
CableLine CLI C 02-3 VI/WS 7 MP

Weidmüller Interface GmbH & Co. KG
Klingenbergstraße 26
D-32758 Detmold
Germany
Fon: +49 5231 14-0
Fax: +49 5231 14-292083
www.weidmueller.com

Accessories

| | | |
|------------|----------------------------|---|
| Type | CLI R 02-3 GE/SW N | Version |
| Order No. | 0560001664 | CableLine, Mounting mandrel, 1.3 - 3 mm, 3 x 3.4 mm, yellow |
| GTIN (EAN) | 4008190989958 | |
| Qty. | 10 pc(s). | |
| Type | CLI R 02-3 GE/SW I | Version |
| Order No. | 0560001654 | CableLine, Mounting mandrel, 1.3 - 3 mm, 3 x 3.4 mm, yellow |
| GTIN (EAN) | 4008190989903 | |
| Qty. | 10 pc(s). | |
| Type | CLI R 02-3 GE/SW X | Version |
| Order No. | 0560001693 | CableLine, Mounting mandrel, 1.3 - 3 mm, 3 x 3.4 mm, yellow |
| GTIN (EAN) | 4008190990053 | |
| Qty. | 10 pc(s). | |

International colour code



The Weidmüller range of conductor and cable marker products provides users with solutions for the most diverse applications. The range of applications extends from narrow conductors right up to cables with large outside diameters. Among the products in the range are combination systems with individual tags, transparent sleeves, shrink-fit sleeves and markers, which can be fixed with cable ties.

General ordering data

| | | |
|------------|----------------------------|---|
| Type | CLI R 02-3 GE/SW 4 | Version |
| Order No. | 0560001513 | CableLine, Mounting mandrel, 1.3 - 3 mm, 3 x 3.4 mm, yellow |
| GTIN (EAN) | 4008190186081 | |
| Qty. | 10 pc(s). | |

Special characters



The Weidmüller range of conductor and cable marker products provides users with solutions for the most diverse applications. The range of applications extends from narrow conductors right up to cables with large outside diameters. Among the products in the range are combination systems with individual tags, transparent sleeves, shrink-fit sleeves and markers, which can be fixed with cable ties.

General ordering data

| | | |
|------------|----------------------------|---|
| Type | CLI R 02-3 GE/SW - | Version |
| Order No. | 0560001740 | CableLine, Mounting mandrel, 1.3 - 3 mm, 3 x 3.4 mm, yellow |
| GTIN (EAN) | 4008190990091 | |
| Qty. | 10 pc(s). | |
| Type | CLI R 02-3 GE/SW / | Version |
| Order No. | 0560001743 | CableLine, Mounting mandrel, 1.3 - 3 mm, 3 x 3.4 mm, yellow |
| GTIN (EAN) | 4008190990114 | |
| Qty. | 10 pc(s). | |

Creation date April 30, 2020 8:18:33 PM CEST

Data sheet**CableLine
CLI C 02-3 VI/WS 7 MP**

Weidmüller Interface GmbH & Co. KG
Klingenbergstraße 26
D-32758 Detmold
Germany
Fon: +49 5231 14-0
Fax: +49 5231 14-292083
www.weidmueller.com

Accessories

| Type | CLI R 02-3 GE/SW . | Version |
|------------|----------------------------|---|
| Order No. | 0560001749 | CableLine, Mounting mandrel, 1.3 - 3 mm, 3 x 3.4 mm, yellow |
| GTIN (EAN) | 4008190990138 | |
| Qty. | 10 pc(s). | |

| Type | CLI R 02-3 GE/SW ET | Version |
|------------|----------------------------|---|
| Order No. | 0560001745 | CableLine, Mounting mandrel, 1.3 - 3 mm, 3 x 3.4 mm, yellow |
| GTIN (EAN) | 4008190990121 | |
| Qty. | 10 pc(s). | |

| Type | CLI R 02-3 GE/SW + | Version |
|------------|----------------------------|---|
| Order No. | 0560001738 | CableLine, Mounting mandrel, 1.3 - 3 mm, 3 x 3.4 mm, yellow |
| GTIN (EAN) | 4008190990084 | |
| Qty. | 10 pc(s). | |