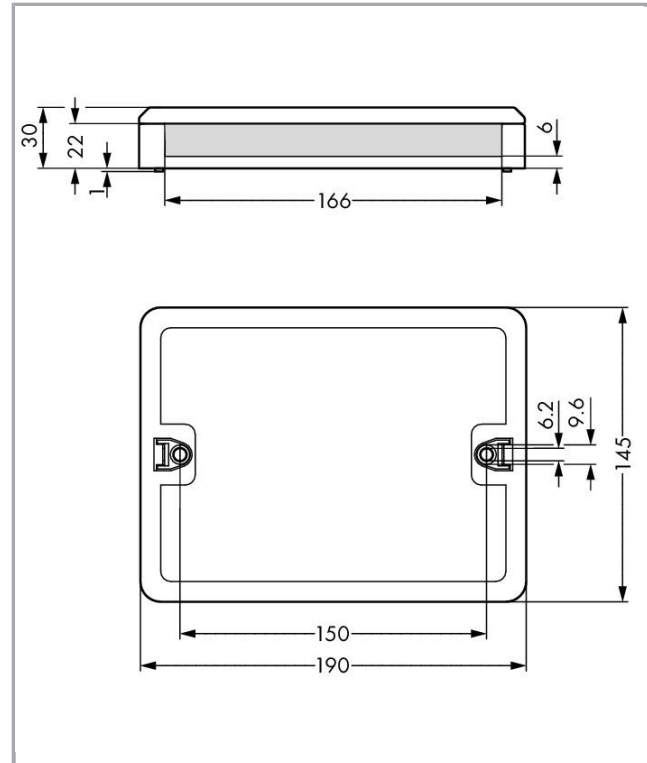


Data sheet | Item number: 899-682

Distribution box; for self-assembly; white

[www.wago.com/899-682](http://www.wago.com/899-682)



## Item description

### Note on mismatching protection:

All WINSTA<sup>®</sup> components are 100% protected against mismatching when:

- a.) plugging different numbers of poles
- b.) plugging while rotated 180
- c.) plugging while laterally staggered
- d.) plugging one pole

## Data

### Electrical data

Note on Contact Resistance

approx. 1 mΩ of contact resistance approx. 0.25 mΩ contact transition plug/socket

Subject to changes. Please also observe the further product documentation!

WAGO Kontakttechnik GmbH & Co. KG  
Hansastr. 27  
32423 Minden  
Phone: +49571 887-0 | Fax: +49571 887-169  
Email: [info.de@wago.com](mailto:info.de@wago.com) | Web: [www.wago.com](http://www.wago.com)

Do you have any questions about our products?  
We are always happy to take your call at +49 (571) 887-44222.



## Ratings per IEC/EN 60664-1

Ratings per	IEC/EN 60664-1
Legend (ratings)	(III / 3) $\hat{=}$ Overvoltage category III / Pollution degree 3

## Geometrical Data

Width	190 mm / 7.48 inch
Height	30 mm / 1.181 inch
Depth	145 mm / 5.709 inch

## Mechanical data

Type of mounting	Wall, screw mount Installation on mounting plate
Protection class	IP20
Note on protection class	Only when mated (these compact connectors are not designed for use in open, easily accessible areas).

## Plug connection

Mismating protection	Yes
Locking of plug-in connection	locking lever

## Material Data

Color	white
Insulating material	Polyamide 66 (PA 66)
Contact material	Copper or copper alloy (surface-treated)
Weight	192.6 g

## Environmental Requirements

Processing temperature	-5 ... +40 °C
Continuous operating temperature	-35 ... +85 °C
Note on Continuous Service Temperature	Insulating parts for temperatures $\leq$ 105 °C

## Commercial data

Packaging type	BOX
Country of origin	DE
GTIN	4055143315715

Subject to changes. Please also observe the further product documentation!

WAGO Kontakttechnik GmbH & Co. KG  
 Hansastr. 27  
 32423 Minden  
 Phone: +49571 887-0 | Fax: +49571 887-169  
 Email: [info.de@wago.com](mailto:info.de@wago.com) | Web: [www.wago.com](http://www.wago.com)

Do you have any questions about our products?  
 We are always happy to take your call at +49 (571) 887-44222.







Customs Tariff No.

85366990990

## Counterpart

## Compatible products

### assembling

	<b>Item no.: 770-630</b> Fixing pin; for distribution boxes; Plastic; gray	<a href="http://www.wago.com/770-630">www.wago.com/770-630</a>
	<b>Item no.: 770-680</b> Mounting plate; for distribution boxes	<a href="http://www.wago.com/770-680">www.wago.com/770-680</a>
	<b>Item no.: 890-302</b> Mounting carrier; 2-pole; for sockets and plugs; Plastic; gray	<a href="http://www.wago.com/890-302">www.wago.com/890-302</a>
	<b>Item no.: 890-303</b> Mounting carrier; 3-pole; for sockets and plugs; Plastic; gray	<a href="http://www.wago.com/890-303">www.wago.com/890-303</a>
	<b>Item no.: 890-304</b> Mounting carrier; 4-pole; for sockets and plugs; Plastic; gray	<a href="http://www.wago.com/890-304">www.wago.com/890-304</a>
	<b>Item no.: 890-305</b> Mounting carrier; 5-pole; for sockets and plugs; Plastic; gray	<a href="http://www.wago.com/890-305">www.wago.com/890-305</a>

## Installation Notes

### Installation



Securing the mounting plate with WINSTA<sup>®</sup>  
Distribution Box to the wall (e.g., via stud gun).

### Application

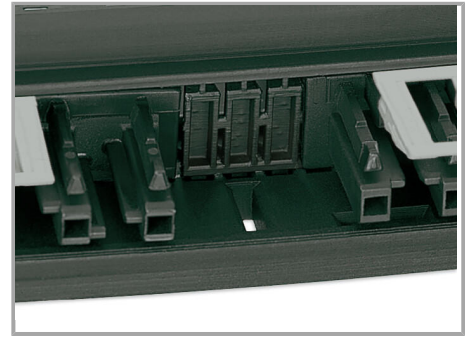
Subject to changes. Please also observe the further product documentation!



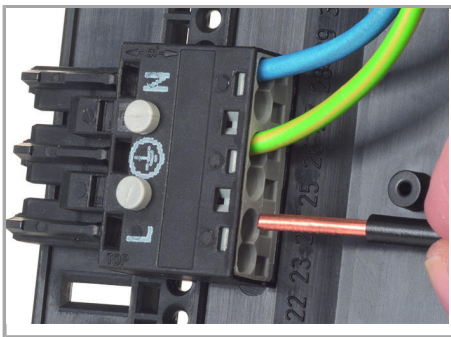
The set includes: 1 bottom, 1 lid, 2 sidewalls and 16 mounting pins.



Remove unrequired areas from the sidewalls.



Unassigned slots and spaces are closed by inserting a sidewall.



Using mounting pins to secure WINSTA<sup>®</sup> MIDI and WINSTA<sup>®</sup> MIDI special connectors in a distribution box.



Adapter for WINSTA<sup>®</sup> MINI and WINSTA<sup>®</sup> MINI special connectors

## Product family

### <i>WINSTA</i><sup>®</sup> Boxen

WINSTA<sup>®</sup> ist das Steckverbindersystem, das optimal auf die hohen Anforderungen in der Gebäudeinstallation zugeschnitten ist. Es macht die Elektroinstallation steckbar und dadurch schnell, sicher und fehlerfrei. Dies gilt auch in weiteren Anwendungen wie z. B. im Schiffbau, in der Bahntechnik oder in der Industrie.

[Show all products from the family](#)

Subject to changes. Please also observe the further product documentation!