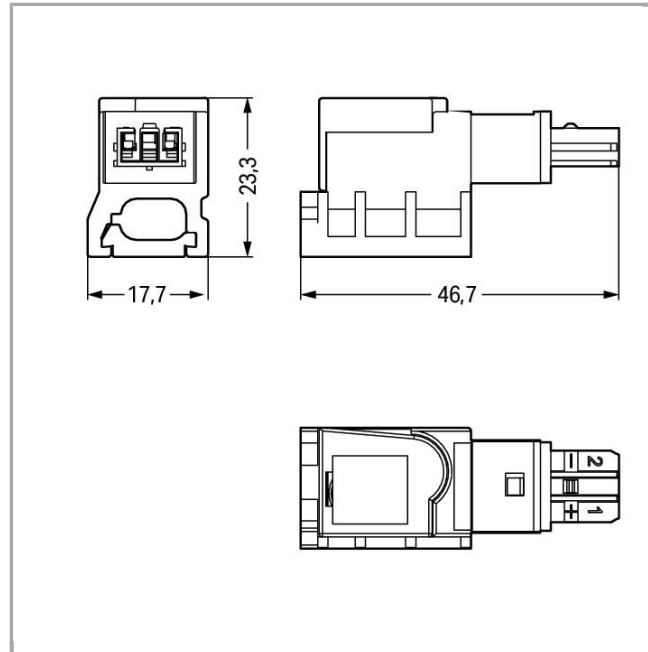


Data sheet | Item number: 893-129

Tap-off module; for flat cable; 2-pole; with cable connection on the output side; light gray

www.wago.com/893-129



RoHS Compliant

BOMcheck.net

Color:

Item description

- Suitable for bus and power lines or for bus and power combined in one cable
- Easy installation without line interruption due to convenient insulation displacement technology (IDC)
- WINSTA® IDC Supply and Tap-Off Modules allow connection at any location of the flat cable – one rotation per pole is all that is required

Note on mismatching protection:

All WINSTA® components are 100% protected against mismatching when:

a.) plugging different numbers of poles

Subject to changes. Please also observe the further product documentation!

WAGO Kontakttechnik GmbH & Co. KG
Hansastr. 27
32423 Minden
Phone: +49571 887-0 | Fax: +49571 887-169
Email: info.de@wago.com | Web: www.wago.com

Do you have any questions about our products?
We are always happy to take your call at +49 (571) 887-44222.



- b.) plugging while rotated 180
- c.) plugging while laterally staggered
- d.) plugging one pole

Data

Electrical data

Note on Contact Resistance	approx. 1 mΩ of contact resistance approx. 0.25 mΩ contact transition plug/socket
----------------------------	---

Ratings per IEC/EN 60664-1

Ratings per	IEC/EN 60664-1
Rated voltage (III / 3)	50 V
Rated impulse voltage (III / 3)	0.8 kV
Rated current	3 A
Legend (ratings)	(III / 3) ≙ Overvoltage category III / Pollution degree 3

Connection data

Connection technology	IDC
Actuation type	Operating tool
No. of poles	2

Geometrical Data

Width	17,7 mm / 0.697 inch
Height	23,3 mm / 0.917 inch
Depth	46,7 mm / 1.839 inch

Mechanical data

Technologie	KNX
Coding	F
Mating force of a plug-in connection	approx. 10 ... 15 N
Retention force of a plug-in connection	When locked: > 80 N
Unmating force of a plug-in connection	when unlocked: approx. 15 ... 20 N
Number of mating cycles	200
Marking	1+ 2-

Subject to changes. Please also observe the further product documentation!

Protection class	IP20
Note on protection class	Only when mated (these compact connectors are not designed for use in open, easily accessible areas).
Potential marking	1+ 2-
Application	KNX
Suitable	for flat cable 2 x 1.5 mm ²

Plug connection

Mismating protection	Yes
Locking of plug-in connection	locking lever

Material Data

Color	light gray
Insulating material	Polyamide 66 (PA 66)
Reaction to fire class per EN 50575	E _{ca}
Contact material	Copper or copper alloy (surface-treated)
Weight	15.6 g

Environmental Requirements

Processing temperature	-5 ... +40 °C
Continuous operating temperature	-35 ... +85 °C
Note on Continuous Service Temperature	PVC cable for temperatures ≤ 70 °C (including halogen-free) PVC flat cable for temperatures -15 °C to ≤ 70 °C (including halogen-free) Insulating parts for temperatures ≤ 105 °C

Commercial data

Packaging type	BOX
Country of origin	CH
GTIN	4050821471721
Customs Tariff No.	85366990990

Counterpart



Item no.893-1032



Plug; with strain relief housing; 2-pole; Cod. F; light gray

www.wago.com/893-1032

Subject to changes. Please also observe the further product documentation!

Compatible products

wiring and connectors

	Item no.: 897-121 Flat cable; 2 x 1.5 mm ² ; PVC; 2 buses; 50 V; 1,50 mm ² ; light gray	www.wago.com/897-121
	Item no.: 897-122 Flat cable; 2 x 1.5 mm ² ; halogen-free; 2 buses; 50 V; 1,50 mm ² ; light gray	www.wago.com/897-122

Downloads

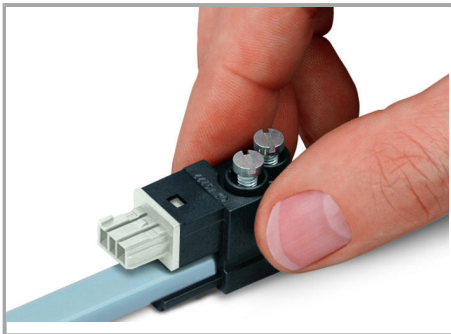
CAD/CAE-Data

CAE data

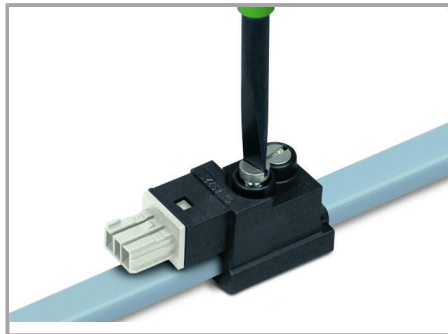
EPLAN Data Portal 893-129	URL	Download
WSCAD Universe 893-129	URL	Download

Installation Notes

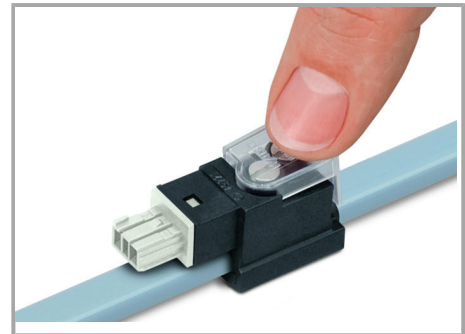
Conductor termination



The IDC module can only be mounted if the two codings match each other.



Tighten the screws to connect the flat cable.

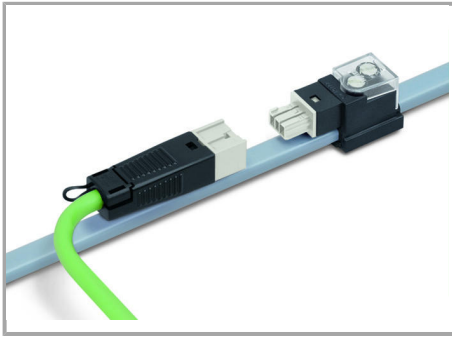


Snap the transparent protective cover onto the module.

Observe 1 Nm of tightening torque!

Should the IDC module jam during mounting, turn the module by 180° and remount it, flush with the base.

Subject to changes. Please also observe the further product documentation!



Connect the cable assembly to the module.

Product family

WINSTA® IDC

[Show all products from the family](#)

Subject to changes. Please also observe the further product documentation!