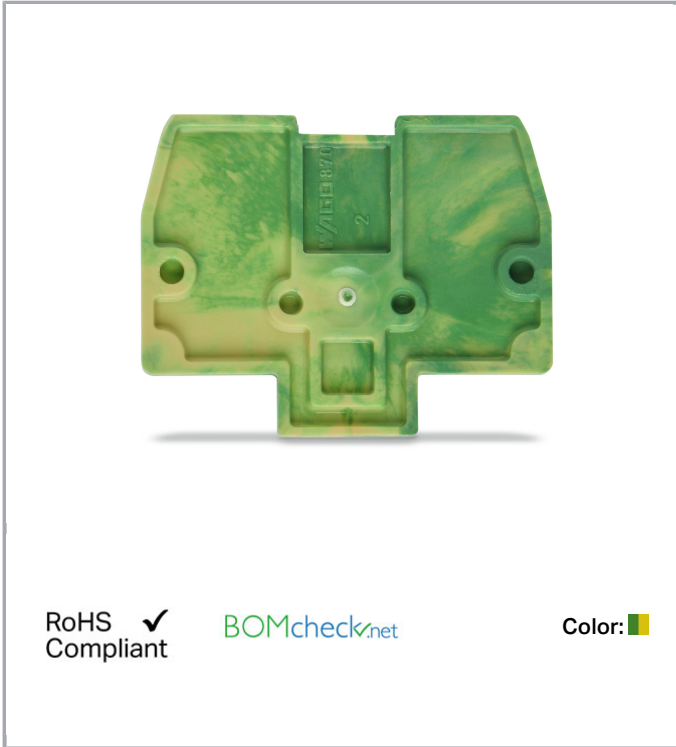


## Data sheet | Item number: 870-926

End and intermediate plate; 2 mm thick; for 2-conductor ground conductor

Ex term; green-yellow

[www.wago.com/870-926](http://www.wago.com/870-926)



### Data

#### Geometrical Data

Width	2 mm / 0.079 inch
Height	27.5 mm / 1.083 inch
Depth	33.4 mm / 1.315 inch

#### Material Data

Color	green-yellow
Fire load	0.032 MJ
Weight	1.1 g

#### Commercial data

Product Group	16 (Rail Mounted Terminal Block with CCC)
Packaging type	BOX

Subject to changes. Please also observe the further product documentation!

WAGO Kontakttechnik GmbH & Co. KG  
Hansastr. 27  
32423 Minden  
Phone: +49571 887-0 | Fax: +49571 887-169  
Email: [info.de@wago.com](mailto:info.de@wago.com) | Web: [www.wago.com](http://www.wago.com)

Do you have any questions about our products?  
We are always happy to take your call at +49 (571) 887-44222.



Country of origin	CN
GTIN	4045454269869
Customs Tariff No.	85389099990

## Counterpart

## Downloads

### Documentation

#### Additional Information

Technical explanations	Apr 3, 2019	pdf 2.1 MB	Download
------------------------	-------------	---------------	----------

## CAD/CAE-Data

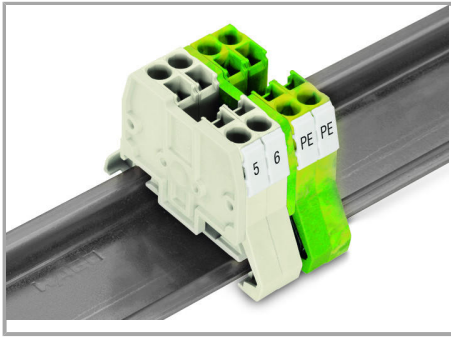
### CAE data

EPLAN Data Portal 870-926	URL	Download
WSCAD Universe 870-926	URL	Download

## Installation Notes

### Ex Application

Subject to changes. Please also observe the further product documentation!



In order to meet creepage and clearance requirements for Ex e applications, it is necessary to insert an end or intermediate plate between a through and a ground conductor terminal block.

End plates 870-923 (gray), 870-924 (orange) and 870-925 (light gray), as well as separator plates 870-928 (gray) and 870-929 (orange) cannot be assembled to 2-conductor ground Ex terminal blocks (870-907 /999-950).

Subject to changes. Please also observe the further product documentation!