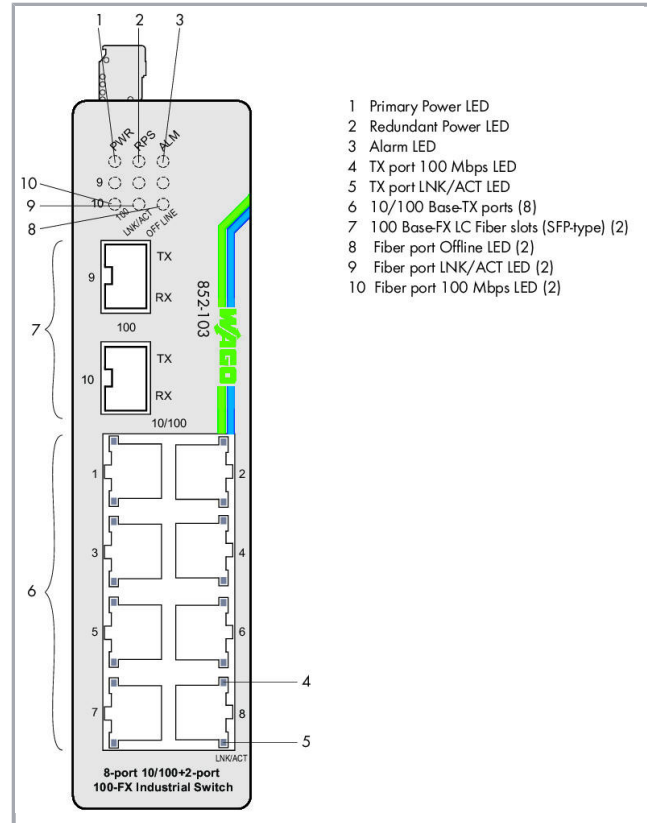


Data sheet | Item number: 852-103/040-000

Industrial-Switch; 8-port 100Base-TX; 2 Slots 100Base-FX; Extended temperature range; EXT; black

[www.wago.com/852-103/040-000](http://www.wago.com/852-103/040-000)



Subject to changes. Please also observe the further product documentation!

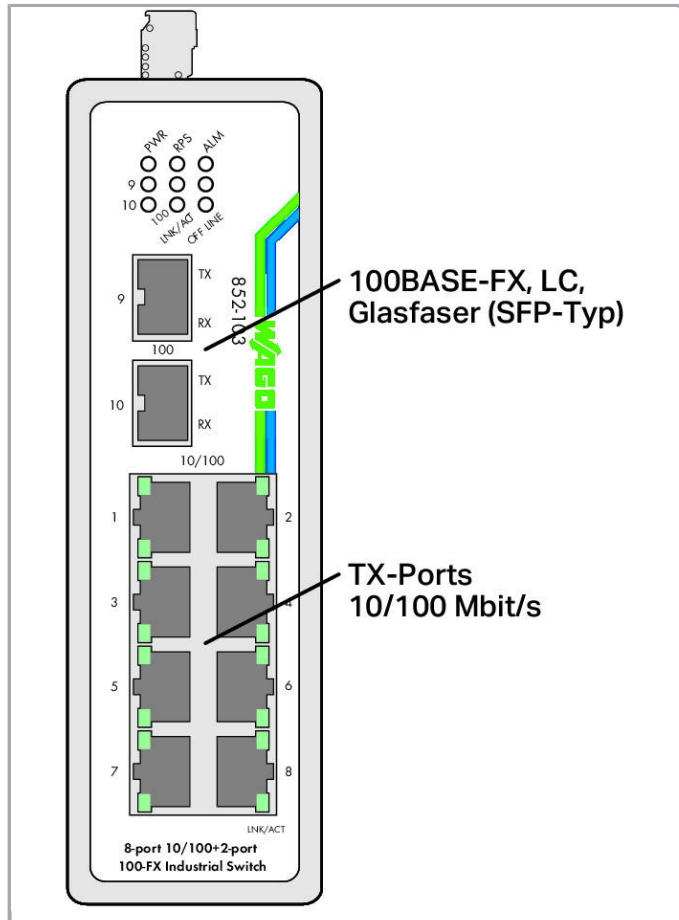
WAGO Kontakttechnik GmbH & Co. KG  
Hansastr. 27  
32423 Minden  
Phone: +49571 887-0 | Fax: +49571 887-169  
Email: [info.de@wago.com](mailto:info.de@wago.com) | Web: [www.wago.com](http://www.wago.com)

Do you have any questions about our products?  
We are always happy to take your call at +49 (571) 887-44222.

RoHS  Compliant

[BOMcheck.net](https://www.bomcheck.net)

Color:



## Item description

The 852-103/040-000 Industrial Switch is an 8-port 10/100Base-TX and 2-port SFP 100Base-FX (optional SFP modules) ETHERNET switch.

Packaged in a rugged housing, this switch offers both a redundant power supply and relay-based function monitoring. These functions make it ideal for a wide range of applications.

### Features:

- Redundant DC power supply
- Large supply voltage range: 9 ... 48 V

—  
Subject to changes. Please also observe the further product documentation!



- DIP switches to set alarm functions
- Full compliance with IEEE802.3, 802.3u standards
- Non-blocking, store-and-forward switching
- Autonegotiation at all 10/100Base-TX ports
- Auto-MDI/MDIX (crossover) at all 10/100Base-TX ports

## Data

### Technical Data

Switchingmodus	Store-and-forward; non-blocking
Number of 100Base-TX ports	8
Number of 100Base-FX ports	2
Communication standards	IEEE 802.3 10BASE-T IEEE 802.3u 100BASE-TX/FX IEEE 802.3x Flow Control
Redundancy function	Redundant DC power supply
Configuration options	DIP switch for signal contact
Diagnostics	Signal contact
MAC table (large)	2000 addresses
Jumbo frame size	1536. Byte
Supply voltage	DC 9 ... 48 V; Cable length:< 3 m
Energy consumption max.	6.08 W
Energy consumption typ. (24 V)	5.76 W
Baud rate	Copper cable: 10/100 Mbit/s; Fiber optic:100 Mbit/s
Transmission medium (communication/fieldbus)	Copper cable: Cat. 5 or higher, 100 m maximum cable length; Fiber optic: FX Multi-Mode, LX Single-Mode
LWL-Fasertyp	Single-Mode and Multi-Mode
Paketdurchsatz	148,800 pkt/s
Panel	12 x DIP switch: Alarm function power supplies and ports 1 ... 10
Indicators	Device: LED (PWR, RPS) green: Power supply (primary), redundant power supply (secondary); LED (ALM) red: Alarm; LED (LNK/ACT, 100) green, LED (OFFLINE) red: Status fiber optic ports; per port: LED (100, LNK/ACT) green: Status 100 Mbps, LNK/ACT ports 1 ... 8

### Connection data

Connection technology: communication/fieldbus	Copper cable: 8 x RJ-45; Fiber optic: 2 x SFP; LC fiber-optic connector
Anschluss technik: Versorgung	1 x Built-in male connector: 231-436/001-000; included female connector (MCS Connectors): 231-106/026-000

Subject to changes. Please also observe the further product documentation!

## Geometrical Data

Width	50 mm / 1.969 inch
Height from upper-edge of DIN-35 rail	120 mm / 4.724 inch
Depth	162 mm / 6.378 inch

## Mechanical data

Weight	887 g
Color	black
Housing material	Aluminum
Conformity marking	CE

## Environmental Requirements

Surrounding air (operating) temperature	-40 ... 70 °C
Surrounding air (storage) temperature	-40 ... 85 °C
Protection class	IP30
Relative air humidity (no condensation)	95 %
Type of mounting	DIN-35 rail
Vibration resistance	per IEC 60068-2-6
Shock resistance	per IEC 60068-2-27
EMC immunity to interference	per EN 61000-6-2
EMC emission of interference	per EN 61000-6-4

## Commercial data

Packaging type	BOX
Country of origin	TW
GTIN	4050821157663
Customs Tariff No.	85176200000

## Counterpart

## Compatible products

### transfer module

Subject to changes. Please also observe the further product documentation!



**Item no.: 289-172**  
Interface module; RJ-45; RJ-45; Cat. 5; in mounting carrier

[www.wago.com/289-172](http://www.wago.com/289-172)



**Item no.: 289-175**  
Interface module; RJ-45; PCB terminal blocks, double-row; Cat. 5; in mounting carrier; with shield connection; with shield clamping saddle; 1,50 mm<sup>2</sup>

[www.wago.com/289-175](http://www.wago.com/289-175)

**Item no.: 289-195**  
Interface module; RJ-45; IDC technology; Cat. 6; in mounting carrier; with shield connection

[www.wago.com/289-195](http://www.wago.com/289-195)



**Item no.: 289-196**  
Interface module; RJ-45; with power jumper contacts; PCB terminal blocks; Cat. 5

[www.wago.com/289-196](http://www.wago.com/289-196)

**power supply**

**Item no.: 787-1102**  
Switched-mode power supply; Compact; 1-phase; 24 VDC output voltage; 1.3 A output current; DC OK signal [www.wago.com/787-1102](http://www.wago.com/787-1102)

**Item no.: 787-1112**  
Switched-mode power supply; Compact; 1-phase; 24 VDC output voltage; 2.5 A output current; DC OK signal [www.wago.com/787-1112](http://www.wago.com/787-1112)

**Item no.: 787-1122**  
Switched-mode power supply; Compact; 1-phase; 24 VDC output voltage; 4 A output current; DC OK signal [www.wago.com/787-1122](http://www.wago.com/787-1122)



**Item no.: 787-1602**  
Switched-mode power supply; Classic; 1-phase; 24 VDC output voltage; 1 A output current; NEC Class 2; DC OK signal [www.wago.com/787-1602](http://www.wago.com/787-1602)



**Item no.: 787-1606**  
Switched-mode power supply; Classic; 1-phase; 24 VDC output voltage; 2 A output current; NEC Class 2; DC OK signal [www.wago.com/787-1606](http://www.wago.com/787-1606)



**Item no.: 787-1622**  
Switched-mode power supply; Classic; 1-phase; 24 VDC output voltage; 5 A output current; TopBoost; DC OK contact [www.wago.com/787-1622](http://www.wago.com/787-1622)



**Item no.: 787-1632**  
Switched-mode power supply; Classic; 1-phase; 24 VDC output voltage; 10 A output current; TopBoost; DC OK contact [www.wago.com/787-1632](http://www.wago.com/787-1632)



**Item no.: 787-1702**  
Switched-mode power supply; Eco; 1-phase; 24 VDC output voltage; 1.25 A output current [www.wago.com/787-1702](http://www.wago.com/787-1702)



**Item no.: 787-1712**  
Switched-mode power supply; Eco; 1-phase; 24 VDC output voltage; 2.5 A output current [www.wago.com/787-1712](http://www.wago.com/787-1712)



**Item no.: 787-1722**  
Switched-mode power supply; Eco; 1-phase; 24 VDC output voltage; 5 A output current [www.wago.com/787-1722](http://www.wago.com/787-1722)

**General accessories**



**Item no.: 852-201/107-002**  
SFP module 2: 1310nm; 100Base-FX Multi-Mode LC; 2 km; silver-colored

[www.wago.com/852-201/107-002](http://www.wago.com/852-201/107-002)

Subject to changes. Please also observe the further product documentation!



**Item no.:** 852-201/107-030

SFP module 30: 1310nm; 100Base-FX Single-Mode LC; 30 km; silver-colored

[www.wago.com/852-201/107-030](http://www.wago.com/852-201/107-030)

---

wiring and connectors



**Item no.:** 750-975

ETHERNET RJ-45 connector, IP20; ETHERNET 10/100 Mbit/s; for field assembly; light gray

[www.wago.com/750-975](http://www.wago.com/750-975)

**Item no.:** 750-976

PROFINET RJ-45 connector, IP20; ETHERNET 10/100 Mbit/s; for field assembly

[www.wago.com/750-976](http://www.wago.com/750-976)

**Item no.:** 750-977/000-011

Connector ETHERNET; RJ-45; Cat. 6A; straight; Code T568A; AWG 22

[www.wago.com/750-977/000-011](http://www.wago.com/750-977/000-011)

**Item no.:** 750-977/000-012

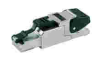
Connector ETHERNET; RJ-45; Cat. 6A; straight; Code T568B; AWG 22

[www.wago.com/750-977/000-012](http://www.wago.com/750-977/000-012)

**Item no.:** 750-977/000-013

Connector PROFINET; RJ-45; Cat. 6A; straight; AWG 22

[www.wago.com/750-977/000-013](http://www.wago.com/750-977/000-013)



**Item no.:** 750-977/000-021

Connector ETHERNET; RJ-45; Cat. 6A; straight; Code T568A; AWG 24

[www.wago.com/750-977/000-021](http://www.wago.com/750-977/000-021)

**Item no.:** 750-977/000-022

Connector ETHERNET; RJ-45; Cat. 6A; straight; Code T568B; AWG 24

[www.wago.com/750-977/000-022](http://www.wago.com/750-977/000-022)



**Item no.:** 750-978/000-011

Connector ETHERNET; RJ-45; Cat. 6A; straight; Code T568A; AWG 22; Strain relief

[www.wago.com/750-978/000-011](http://www.wago.com/750-978/000-011)



**Item no.:** 750-978/000-012

Connector ETHERNET; RJ-45; Cat. 6A; straight; Code T568B; AWG 22; Strain relief

[www.wago.com/750-978/000-012](http://www.wago.com/750-978/000-012)



**Item no.:** 750-978/000-013

Connector PROFINET; RJ-45; Cat. 6A; straight; AWG 22; Strain relief

[www.wago.com/750-978/000-013](http://www.wago.com/750-978/000-013)

**Item no.:** 750-978/000-021

Connector ETHERNET; RJ-45; Cat. 6A; straight; Code T568A; AWG 24; Strain relief

[www.wago.com/750-978/000-021](http://www.wago.com/750-978/000-021)

**Item no.:** 750-978/000-022

Connector ETHERNET; RJ-45; Cat. 6A; straight; Code T568B; AWG 24; Strain relief

[www.wago.com/750-978/000-022](http://www.wago.com/750-978/000-022)

---

Subject to changes. Please also observe the further product documentation!

WAGO Kontakttechnik GmbH & Co. KG

Hansastr. 27

32423 Minden

Phone: +49571 887-0 | Fax: +49571 887-169

Email: [info.de@wago.com](mailto:info.de@wago.com) | Web: [www.wago.com](http://www.wago.com)

Do you have any questions about our products?

We are always happy to take your call at +49 (571) 887-44222.



**Item no.: 750-979/000-011**

Connector ETHERNET; RJ-45; Cat. 6A; angled; Code T568A; AWG 22; Strain relief

[www.wago.com/750-979/000-011](http://www.wago.com/750-979/000-011)

**Item no.: 750-979/000-012**

Connector ETHERNET; RJ-45; Cat. 6A; angled; Code T568B; AWG 22; Strain relief

[www.wago.com/750-979/000-012](http://www.wago.com/750-979/000-012)

**Item no.: 750-979/000-013**

Connector PROFINET; RJ-45; Cat. 6A; angled; AWG 22; Strain relief

[www.wago.com/750-979/000-013](http://www.wago.com/750-979/000-013)

**Item no.: 750-979/000-021**

Connector ETHERNET; RJ-45; Cat. 6A; angled; Code T568A; AWG 24; Strain relief

[www.wago.com/750-979/000-021](http://www.wago.com/750-979/000-021)



**Item no.: 750-979/000-022**

Connector ETHERNET; RJ-45; Cat. 6A; angled; Code T568B; AWG 24; Strain relief

[www.wago.com/750-979/000-022](http://www.wago.com/750-979/000-022)

## Downloads

### Documentation

#### Manual

8-Port 100 BASE-TX + 2-Slot 100 BASE-FX Industrial Switch	V 1.0.2	pdf 437.4 kB	Download
---	---------	-----------------	----------

#### Instruction Leaflet

Gebrauchs- und Montageanleitung 852-101 / 852-102 / 852-103 / 852-104		pdf 1.7 MB	Download
---	--	---------------	----------

#### Additional Information

Disposal; Electrical and electronic equipment, Packaging	V 1.0.0	pdf 265.8 kB	Download
--	---------	-----------------	----------

#### System Description

Industrial Switches – General Product Information		pdf 2.0 MB	Download
---	--	---------------	----------

## CAD/CAE-Data

### CAE data

EPLAN Data Portal 852-103/040-000		URL	Download
-----------------------------------	--	-----	----------

Subject to changes. Please also observe the further product documentation!



---

WSCAD Universe 852-103/040-000

URL

Download

---

## Installation Notes

Subject to changes. Please also observe the further product documentation!

---

WAGO Kontakttechnik GmbH & Co. KG  
Hansastr. 27  
32423 Minden  
Phone: +49571 887-0 | Fax: +49571 887-169  
Email: [info.de@wago.com](mailto:info.de@wago.com) | Web: [www.wago.com](http://www.wago.com)

Do you have any questions about our products?  
We are always happy to take your call at +49 (571) 887-44222.